

IMPACTS TABLE	
WATERWAY	IMPACTS (SF)
WUS-1	1,092
WUS-2	1,423
WUS-4	18
TOTAL	
2,533	

FEDERAL HIGHWAY ADMINISTRATION EASTERN FEDERAL LANDS
HIGHWAY DIVISION

Hatfield Gate at U.S. Army Garrison
Fort Myer
ARLINGTON COUNTY, VIRGINIA



Waters of the US

Intermittent

Perennial

Waterway Impacts

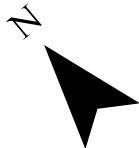
Grading

Cut

Fill

Limit of Disturbance (LOD)

Flow Lines



0 180 360 540 Feet



WSP USA Inc
1 EAST PRATT STREET SUITE 300
BALTIMORE, MD 21202
(410) 727-5050

IMPACTS MAPPING

SCALE: 1 INCH = 180 FEET DATE: FEBRUARY 2022 CONTRACT NO: _____

DESIGNED BY _____
DRAWN BY: CTH
CHECKED BY: KG
F.A.P. NO. _____

COUNTY: ARLINGTON COUNTY
LOGMILE _____

DRAWING NO. 1

SHEET NO. 1 OF 1