



U.S. Department of Transportation  
**Federal Highway Administration**



## TRAFFIC ALERT

RELEASE: **IMMEDIATE**  
CONTACT: Dan Weston – 703-948-3572  
Emergency/After Hours: 202-253-9942  
[Route105BridgeInfo@dot.gov](mailto:Route105BridgeInfo@dot.gov)

June 29, 2022

### **FT. EUSTIS BLVD TRAFFIC UPDATE** *- Disruptions to Traffic as part of Ft. Eustis Blvd Bridge Replacement Project -*

**NEWPORT NEWS** – To ensure motorist safety during VA Rt. 105 Eastbound entrance ramp work related to the Ft. Eustis Blvd. Bridge project, a full closure is scheduled to begin on July 12<sup>th</sup>, 2022 ending approximately on September 30<sup>th</sup>, 2022. This will include a signed detour directing motorists traveling WB US Rt. 60 to VA Rt. 105 EB as the alternate route for travel to VA Rt. 105 EB and I-64 both East and Westbound directions.

Motorists should be mindful of potential delays and consider alternate routes prior to reaching the closure. **Work zone speed limits are 35 mph.**

The Ft. Eustis Blvd Bridge project will replace the existing aging bridge over the Lee Hall Dam Reservoir. The project began in August 2020 and the Westbound lanes were completed in early 2022. Work is proceeding in the future Eastbound lanes of the new bridge from West to East. Current work focuses on placing girders, pouring bridge deck, and replacing the eastbound on ramp as part of the detour. The Eastbound lanes are scheduled to be completed in late 2022, allowing for final work to take place on the bridge approaches. The project is scheduled for completion in early 2023.

Please visit <https://highways.dot.gov/federal-lands/projects/va/flap-npnws-105-1> for traffic updates and other information on the Ft. Eustis Bridge Replacement.

(END)



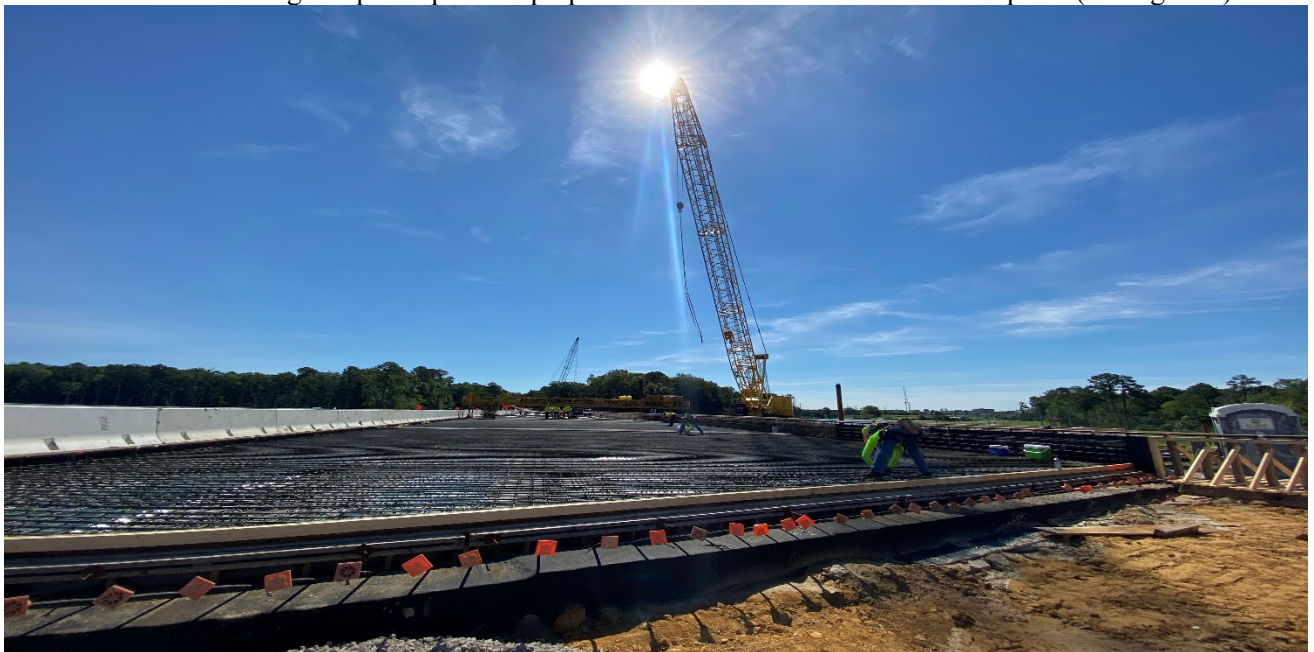
U.S. Department of Transportation  
**Federal Highway Administration**



**PROJECT PROGRESS PHOTOS, June 2022**



Concrete Bidwell being setup into place in preparation for scheduled concrete deck pour. (Facing East)



Placing Steel and tying rebar in preparation for scheduled deck pour. (Facing East)