



Source: NPS

Mar 24, 2023

**Project Number:**

MT PRA GLAC 10(44)

**FHWA Contact:**

Taylor Aponte

Taylor.aponte@dot.gov

(360) 600-2102

**Project Partners:**

Glacier National Park

**Contractor:**

Ceccanti, Inc.

Tacoma, WA

**Notice to Proceed:**

March 23, 2022

**Fixed Completion**

**Date:**

May 26, 2023



U.S. Department  
of Transportation

**Federal Highway  
Administration**

**Lake McDonald Utility Relocation  
Construction Activities & Upcoming Work**

**Project Description:**

This project is being administered by the Federal Highway Administration’s Western Federal Lands Highway Division, in partnership with Glacier National Park. The project will replace the existing Sewer Force Main (SFM), electric, and communication utilities between the lift station at Lake McDonald Lodge and the lift station at Apgar. The project also includes the demolition and replacement of the lift station at Lake McDonald Lodge along with making modifications at the Sprague Creek Campground and Apgar lift station.



**Surface Conditions:**

The current road conditions between Apgar and Lake McDonald Lodge is mainly pavement. Roughly 42,000 lnft of the west bound lane, and 42,000 lnft of the east bound lane between Lake McDonald Lodge and Apgar Lift Station has a strip of milled asphalt that has been recompacted, and will remain in place for the duration of the project where the new SFM and dry utilities are being installed. Vehicles, motorcycles, and bicycles use extreme caution when traveling through these sections.



**Current and Upcoming Work:**

Lumen has completed pulling all the fiber and copper lines in the new conduit. Final terminations, and splicing work is still in progress. The 8” diameter HDPE for the sewer force main has been installed between Apgar lift station and the Lake McDonald Lift Station. Final testing of the SFM system is anticipated to be completed by April 14<sup>th</sup>. The General contractor has successfully completed much of the needed testing of the sewer main and wet-well at Lake McDonald. Reconstruction of the Lake McDonald and Sprague Creek Campground lift stations is nearing completion and will continue into the spring season.



**Traffic Delays:**

GTSR will be closed to public traffic to allow for construction operations. The closure will extend from the 4-way intersection at Apgar to Lake McDonald lodge. The closure is expected until early-May 2023.

**\*The Storm Water Pollution Prevention Plan (SWPPP) for this project is available for viewing at the Project Office of the Contractor at the West Ballfield. See SWPPP information posted at the Construction Info**

Project Website: [Lake McDonald Utility Relocation | FHWA \(dot.gov\)](#)

**Western Federal Lands Highway Division**



Lake McDonald Lift Station SW Elevation



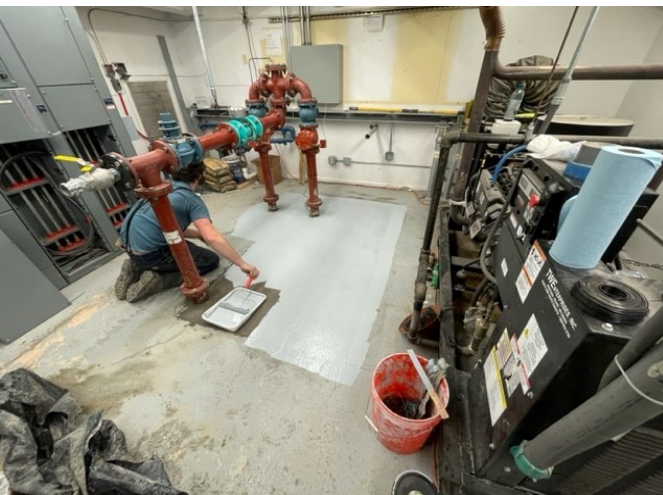
Lake McDonald Lift Station NE Elevation



Lake McDonald Propane Tank Install



Lake McDonald Wet-Well Hatch Installed



Sprague Crk Lift Station Slab Infill



Sprague Crk Lift Station Yard Piping Excavation