



Image Source: FHWA

SWIFTCURRENT SPUR ROAD

Surface Rehabilitation in East Glacier Park



Project Information

Project Number:
MT NP GLAC 14(6)

FHWA Contact:
Walt Elwood
Inspector
550 Corporate Drive, Ste 303
Kalispell, MT 5990f1

Project Partner:
Glacier National Park

Contractor:
Missouri River Contractors
1500 Blaine Street
Helena, MT 59601

Notice to Proceed:
09/18/2024

Fixed Completion Date:
10/11/2025

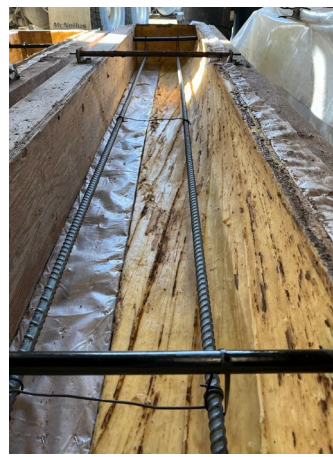
Project Description:
Project Scope includes rehabilitation of the Swiftcurrent Spur road, picnic, campground, and cabin loop areas, as well as additional parking. Construction includes new pavement, parking expansion, drainage, striping, and permanent signage.

Project Staff:
Judy Perez - CPE
Walter Ellwood, CI
Knud Martin, COE
Holly Sim, Project Admin

Construction Update:

March 2025

Missouri River Contractor and their supplier CCM from Helena, MT are working on custom precast materials for the Swiftcurrent Motor Inn Parking Lot. Over the winter, they used salvaged timbers from the existing parking lot to create molds for precast concrete curbs and wheel stops. These will be used in the new parking lot and planter construction for the 2025 season. The concrete's integral color, finishes, and sealers are turning out exceptionally well, ensuring that Glacier National Park visitors will experience the same timber aesthetics with updated, durable materials. Pictures below and following page are from a recent visit to the CCM plant in Helena, MT.

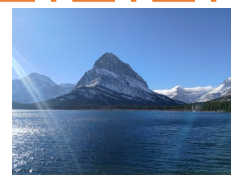


Work Schedule:

Monday- Friday: Currently on Winter Shutdown

Delays and Closures:

Glacier National Park is Closed.



U.S. Department
of Transportation
**Federal Highway
Administration**



Image Source: FHWA

SWIFTCURRENT SPUR ROAD

Precast Curb and Wheel Stops Visit to CCM Supplier in Helena, MT

Project Information

Project Number:
MT NP GLAC 14(6)

FHWA Contact:
Walt Elwood
Inspector
550 Corporate Drive, Ste 303
Kalispell, MT 5990f1

Project Partner:
Glacier National Park

Contractor:
Missouri River Contractors
1500 Blaine Street
Helena, MT 59601

Notice to Proceed:
09/18/2024

Fixed Completion Date:
10/11/2025

Project Description:
Project Scope includes rehabilitation of the Swiftcurrent Spur road, picnic, campground, and cabin loop areas, as well as additional parking. Construction includes new pavement, parking expansion, drainage, striping, and permanent signage.

Project Staff:
Judy Perez - CPE
Walter Ellwood, CI
Knud Martin, COE
Holly Sim, Project Admin



Salvaged Timber from the Project Parking Lot

Forming the Precast Mold



Finished Precast



U.S. Department
of Transportation
**Federal Highway
Administration**

Western Federal Lands Highway Division