



July 15, 2024

Historic Columbia River Highway State Trail - Mitchell Point Crossing

Project Scope: tunneling, grading, masonry, asphalt paving, concrete paving, sign systems, striping, landscaping, structures, and rockfall protection. Current construction activities are highlighted below:

Project Number:

OR DOT CRGNSA 100(4)

FHWA Contact:

Taeyong Lee

Project Engineer

Taeyong.Lee@dot.gov

(202) 843-4492

Hood River Field Office

205 Wasco Loop,

Hood River, OR 97031

Project Partners:

Oregon DOT

Forest Service

Oregon Parks & Recreation Dept

Contractor:

Crestline Construction Co. LLC

The Dalles, Oregon

Work Hours:

Mon-Fri: 7:00 am– 4:30 pm

Notice to Proceed:

January 13, 2021

Approx. Completion:

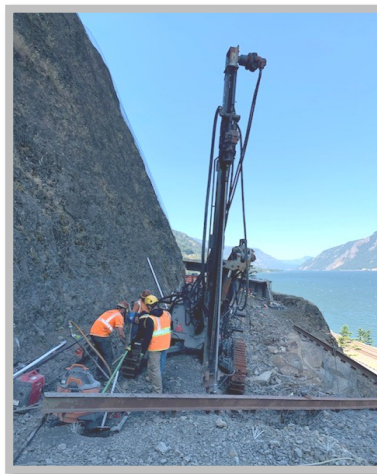
Fall 2024



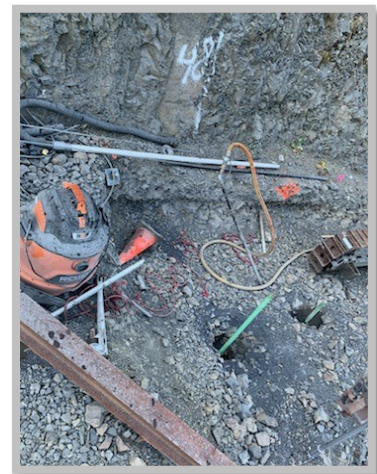
U.S. Department
of Transportation

**Federal Highway
Administration**

Ground Anchor Drilling
In West Bench



Ground Anchor Grouting
in West Bench



Permanent Sign Work



Image Source: FHWA



The lookout exit
at Mitchell Point is closed
until further notice.

Source: Google Maps

Project Website: <https://highways.dot.gov/federal-lands/projects/or/dot-crgnsa-100-4>

Western Federal Lands Highway Division