



Source: FHWA

Nez Perce - Clearwater 2019 Repairs **June 28, 2024**

Project Number:

ID ERFO FS NEZPR117
2019-1(1)

FHWA Contact:

John Henderson
john.henderson@dot.gov
360-839-3867

Project Partner:

National Forest Service
Western Federal Lands
Highway Division

Contractor:

M.L. Albright & Sons, Inc.
6182 Lapwai Rd,
Lewiston ID 83501

Notice to Proceed:

09/29/2023

Fixed Completion Date:

10/18/2024



U.S. Department
of Transportation

**Federal Highway
Administration**

Construction Activities & Upcoming Work

Construction activities continue on FSR 5503 (Swan Creek Rd) at M.P. 1.28 from the USFS gate. Work at this site includes excavation of slide debris, construction of rock embankment as well as construction of Gabion faced, Reinforced soil slope wall. The wall will be approximately 27 feet in height and approximately 100 ft long. Please be aware of incoming and out going truck traffic along Highway 12 at M.P. 87.5. Construction activities are planned to be performed Monday-Friday from 7am-5pm. Construction activities will continue thru the 4th of July holiday and the road will remain closed to the public until completion of construction activities. At the completion of work on FSR 5503, construction activities will move to FSR 470 and FSR 468 with operations running concurrent beginning July 8th.

Road Closures

FSR 5503 is currently closed and will remain closed at the junction with Highway 12 at M.P. 87.5 until construction operations are concluded. Please be aware of potential heavy truck traffic entering and exiting onto the highway and refrain from entering the work area. Please refer to local news outlets on Monday July 1, 2024 for updated information on current and future road closures including road closure dates for FSR470 and FSR469.



Reinforced soil slope Gabion Faced wall construction FSR5503

Source: FHWA



SITE PHOTOS



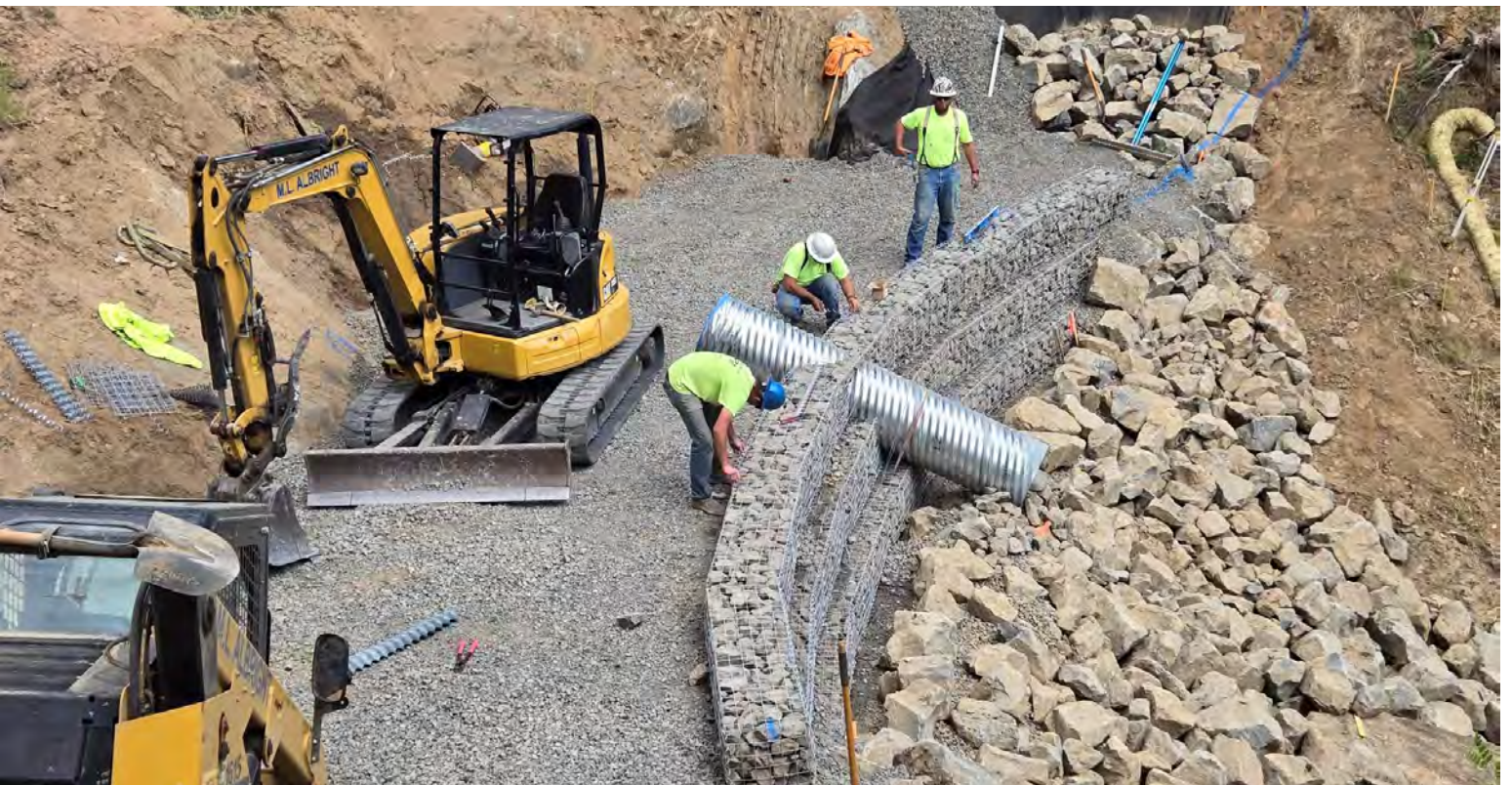
Wall Construction, FSR5503 M.P. 1.28

Source: FHWA



Culvert wall penetration, FSR5503 M.P. 1.28

Source: FHWA



Wall construction, FSR 5503 M.P. 1.28

SOURCE: FHWA