

FHWA Office of Federal Lands Highway

# Rogue-Umpqua Bicycle & Pedestrian Corridor Plan

## *Needs Assessment (Memo 3b)*



*Waterfalls on the Rogue River. Source: USFS Flickr 2017*

**Date:** May 1, 2024  
**From:** Cole Grisham, AICP  
**To:** Project Management Team  
**Subject:** Project Needs Summary

## Table of Contents

<b>Executive Summary</b> .....	<b>1</b>
<b>Needs Identification Process</b> .....	<b>2</b>
Need Types and Examples .....	3
<b>Segment 1 - North Umpqua (West)</b> .....	<b>9</b>
<b>Segment 2 - North Umpqua (East)</b> .....	<b>14</b>
<b>Segment 3 – Diamond Lake</b> .....	<b>21</b>
<b>Segment 4 - Rogue River-Siskiyou and Crater Lake</b> .....	<b>26</b>
<b>Segment 5 – Lost Creek Lake</b> .....	<b>31</b>
<b>Segment 6 – Sams Valley</b> .....	<b>36</b>
<b>Screening Needs</b> .....	<b>38</b>
Categorization Method .....	38
Effort and Impact Assumptions.....	39
Major Projects.....	39
Quick Wins .....	44
As Time Allows.....	48
Back Burner.....	50
<b>Conclusion and Next Steps</b> .....	<b>50</b>
<b>Attachment 1 – Complete List of Bicycle and Pedestrian Needs</b> .....	<b>51</b>
<b>Attachment 2 – Complete Bridge and Site Needs List</b> .....	<b>59</b>

## Acronyms

BLM	Bureau of Land Management
FHWA	Federal Highway Administration
HDM	Highway Design Manual (ODOT)
NPS	National Park Service
ODOT	Oregon Department of Transportation
OPRD	Oregon Parks and Recreation Department
USACE	US Army Corps of Engineers
USFS	US Forest Service
NUT	North Umpqua Trail

## Executive Summary

This Needs Assessment report summarizes the preliminary transportation needs identified in the Rogue-Umpqua Bicycle and Pedestrian Corridor Master Plan Phase 1 (March-December 2023). These needs represent potential projects that enhance bicycle and pedestrian infrastructure along the study area corridor. They also highlight areas of interagency collaboration and co-benefit opportunities to advance from planning to programming. The needs described are neither exhaustive nor prioritized in any way, but instead are meant to summarize and organize the universe of project needs. The report sections are structured as follows:

### Methodology Overview

This section describes the methodology used to identify the bicycle and pedestrian needs along the study area corridor.

### Needs Identified

This section provides a comprehensive list of possible needs, organized by corridor segment. ***In total, approximately 125 bicycle and pedestrian needs were identified within the study area footprint.*** Each corridor segment profile includes a map and accompanying tables with additional information on the proposed bicycle and pedestrian improvement. Click on the segment name in the table below to quickly navigate to the needs identified for that area.

Number	Segment	Description
1	North Umpqua (West)	Roseburg city limits to US Forest Service (USFS) boundary near Fall Creek Falls
2	North Umpqua (East)	USFS boundary near Fall Creek Falls to Lemolo Lake
3	Diamond Lake	Lemolo Lake through Diamond Lake to border of Douglas and Jackson Counties
4	Rogue River-Siskiyou and Crater Lake	OR 230 and 62 through Rogue River- Siskiyou National Forest and connecting to Crater Lake National Park
5	Lost Creek Lake	OR 62 from Rogue River-Siskiyou National Forest boundary to OR 234 interchange
6	Sams Valley	OR 234 from OR 62/234 interchange to Gold Hills

### Needs Screening

The project team used a screening matrix to organize the proposed needs by anticipated levels of effort to produce conceptual designs and cost estimates versus the impact the project need would have on study outcomes. Needs were categorized into four different groups: **Major Projects** (high effort, high impact), **Quick Wins** (low effort, high impact), **As Time Allows** (low effort, low impact), **Back Burner** (high effort, low impact).

### Next Steps

The final section of the report outlines the remaining project steps and how this document informs further plan development.



## Needs Identification Process

The bicycle and pedestrian transportation needs were identified through three related tasks. The first was to review all planning documents relevant to the corridor along with other condition information as determined by the project team. This information is detailed in the [Existing Conditions Summary \(Memo 2\)](#). The second task was to collect use data along the corridor to understand any traffic and safety information that may inform future recommendations ([Demand Management Analysis, Memo 3a](#)). The third task was to conduct a series of open houses in the corridor followed by focus group discussions with users and land managers on issues, opportunities, and needs ([Engagement Strategy, Memo 1](#)).

The results of the three tasks above were to:

- Consider corridor improvements and recommendations by segment;
- Organize project needs by type; and
- Prepare a list of project needs that would include *high, medium, and low* levels of detail.

High detail projects would be the smallest group of highest priority improvements and would include planning-level designs, preliminary engineering and construction cost estimates, and additional design and construction considerations. Medium detail projects only include preliminary engineering and construction cost estimates as well as additional design and construction considerations. Lower detail projects would only include a single generalized cost for preliminary design and construction. All categories will include basic identifying information, including project type, description, location, and facility owner.

The remainder of this document is therefore organized by the following corridor segments shown in Table 1, with summary tables of possible project needs.

*Table 1. Corridor Segments.*

Number	Segment	Description
1	North Umpqua (West)	Roseburg city limits to US Forest Service (USFS) boundary near Fall Creek Falls
2	North Umpqua (East)	USFS boundary near Fall Creek Falls to Lemolo Lake
3	Diamond Lake	Lemolo Lake through Diamond Lake to border of Douglas and Jackson Counties
4	Rogue River-Siskiyou and Crater Lake	OR 230 and 62 through Rogue River-Siskiyou National Forest and connecting to Crater Lake National Park
5	Lost Creek Lake	OR 62 from Rogue River-Siskiyou National Forest boundary to OR 234 interchange
6	Sams Valley	OR 234 from OR 62/234 interchange to Gold Hills

## Need Types and Examples

Needs shown for each of the segments in the following sections are organized by type, both in the tables and in the associated maps. The need types are as follows:

1. **Bicycle-Pedestrian.** Facilities specifically for bicycle and pedestrian users. Needs are divided into Tier 1, 2, and 3 bikeways as defined in the Oregon Department of Transportation (ODOT) Highway Design Manual (HDM) below:<sup>1</sup>

a. Tier 1 Bikeways are physically separated from motor vehicle traffic. This may be either a separated bicycle lane or a shared use path. A separated bicycle lane is a designated lane that is apart from the roadway and has either curb or vertical objects between the bicycle lane and motor vehicle traffic. A shared use side path is separated from motor vehicle traffic in a similar way, but the space for bicycle travel is shared with pedestrians.

b. Tier 2 Bikeways are where pavement markings delineate space on the road for bicycle travel apart from motor vehicle lanes. A paved shoulder delineated with a longitudinal stripe can serve bicycle travel but is not reserved exclusively for bicycle travel. A bicycle lane is reserved exclusively for bicycle travel. A buffered bicycle lane is a bicycle lane within a wider shoulder where an additional striped portion of the shoulder is marked to provide a horizontal space between bicycle travel and motor vehicles. This horizontal space functions as a safety buffer that may occasionally be used by oversized vehicles or by bicyclists to pass one another.

c. Tier 3 Bikeways are where bicycle traffic shares the same travel lane on the roadway with motor vehicles. A narrow shoulder may also function as a Tier 3 facility if the shoulder width is insufficient for bicycle travel without encroaching into the travel lane.

2. **Trail Classification.** The USFS establishes the level of development for its trail on a classification scale of 1 (minimally developed) to 5 (fully developed). Separated bicycle and pedestrian paths in this study are generally assumed to be class 4-5 unless otherwise noted.<sup>2</sup>

3. **Bridge.** Any improvements to or impacting bridges, including adding new bridge facilities.

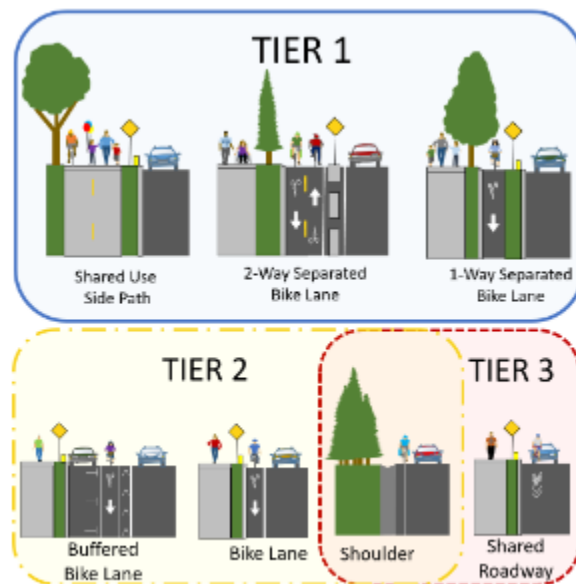


Figure 1. Tiers 1-3 diagram from ODOT HDM (2024).

<sup>1</sup> ODOT. 2024. *Highway Design Manual: Bicycle & Pedestrian Design Guide*.

[https://www.oregon.gov/odot/Engineering/Documents\\_RoadwayEng/HDM-L.pdf](https://www.oregon.gov/odot/Engineering/Documents_RoadwayEng/HDM-L.pdf)

<sup>2</sup> USFS. 2024. *Trail Fundamentals and Trail Management Objectives*. Retrieved February 2024 from:

<https://www.fs.usda.gov/managing-land/trails/trail-management-tools/trail-fundamentals>

4. **Support.** Facilities and amenities supporting transportation systems, such as EV charging infrastructure.
5. **Safety.** Safety-specific improvements not captured in one of the other types. An example would be guard rail replacement.
6. **Site.** Improvements to specific recreation sites, including ingress/egress improvements, site amenities, and other improvements.

Figures 2-8 provide examples of each need type. Figure 9 shows examples of USFS trail development classifications.



*Figure 2. Example of Tier 1 bicycle path from Gold Hill, Oregon. Image source: Alltrails.com 2024.*





Figure 3. Example of Tier 2 bicycle path (bike lane) from ODOT HDM (2024).



Figure 4. Example of Tier 3 bicycle path (shoulder) from Glide, Oregon. Source: Google Maps 2024.





Figure 6. Example of bicycle and pedestrian facility on Mott Bridge on North Umpqua River. Source: Federal Highway Administration (FHWA) 2022.



Figure 5. EV Charging station at Crater Lake National Park. Source: FHWA 2022.





Figure 7. Example safety-only improvement (guardrail). Source: ODOT Flickr 2024.



Figure 8. Example of Guardrail with Weathering Agent along OR 138 near Susan Creek Campground. Source: FHWA 2022





Figure 9. USFS trail development classifications. Clockwise from top left: Class 1-4. Center: Class 5.

## Segment 1 - North Umpqua (West)

Segment 1 (North Umpqua (West)) includes the portions of OR 138 from the Roseburg city limits to the USFS Umpqua National Forest between Idleyld Park and Fall Creek Falls. This segment includes the City of Roseburg, Douglas County, ODOT, and Bureau of Land Management (BLM) as land managers and transportation facility owners. Other interested public agencies include the Cow Creek Band of the Umpqua Tribe of Indians and the North Umpqua Transit District. Table 2 and Table 3 list the project needs identified for Segment 1 – North Umpqua (West).

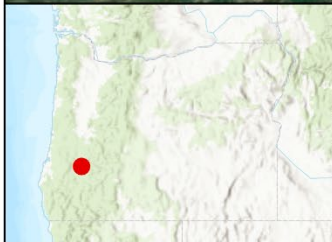
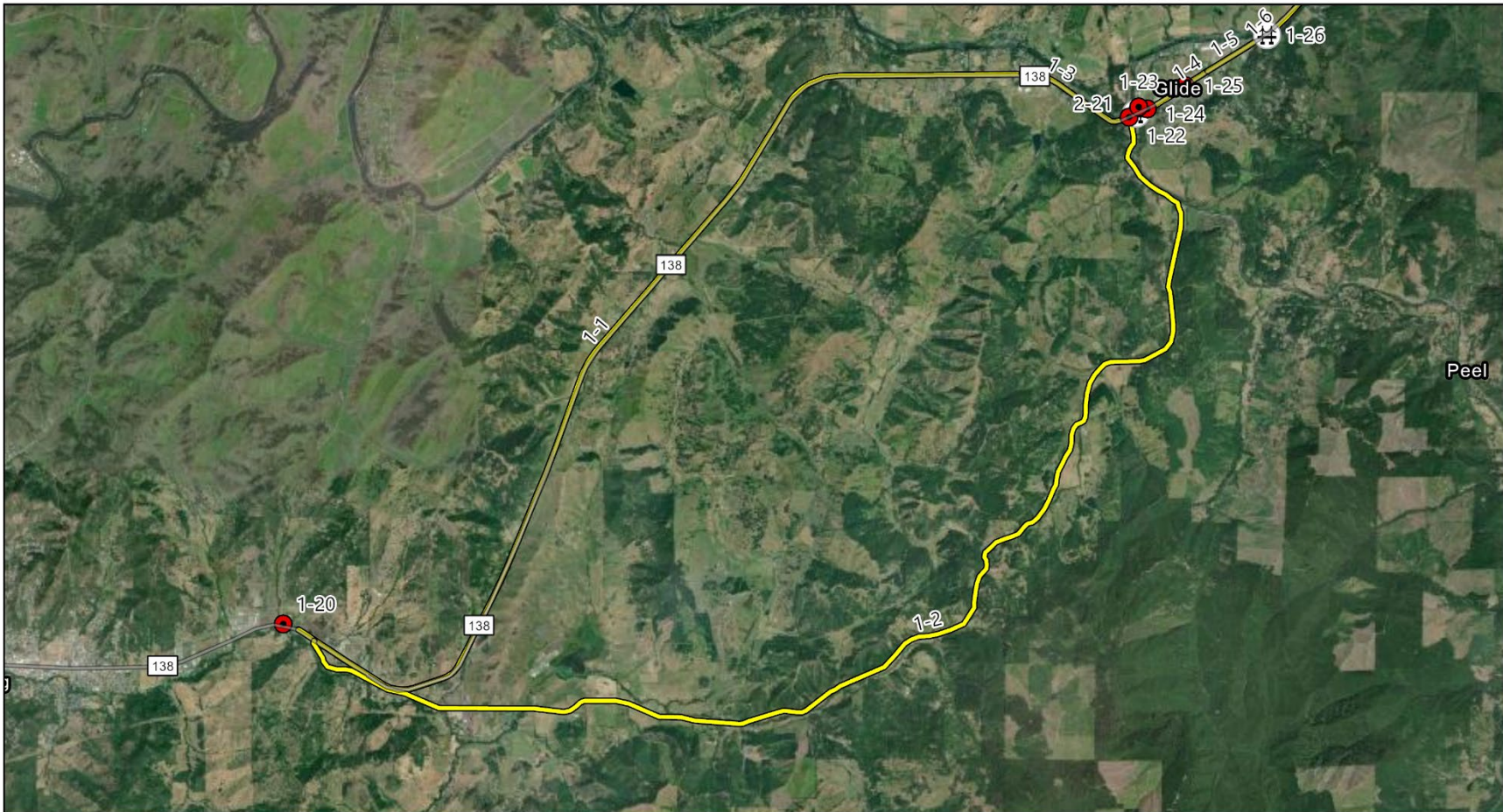
Table 2. Summary of Segment 1 Project Needs.

Segment	Need ID	Name and Description	Type	Tier	USFS Standard	Length (mi)	Facility	Status	Owner	County
1	1	<b>Sunshine to Glide:</b> Separated multiuse path on north side of road between Sunshine Park and Glide	Bike/ Ped	1	4	11.4	OR138	New	ODOT	Douglas
1	2	<b>Buckhorn Road to Glide:</b> Shoulder bike path on Buckhorn Road between Roseburg and Glide	Bike/ Ped	2	4	14.3	Buckhorn Road	Improve	Douglas County	Douglas
1	3	<b>North Bank Road to Colliding Rivers:</b> Shoulder bike path on OR138	Bike/ Ped	2	4	1.4	OR138	New	ODOT	Douglas
1	4	<b>Colliding Rivers to Bobcat Lane:</b> Separated bike path on north and south side (alternating) through Glide	Bike/ Ped	1	4	0.9	OR138	Existing	ODOT	Douglas
1	5	<b>Bobcat Lane to Lone Rock Bridge:</b> Shoulder bike path on OR138	Bike/ Ped	2	4	0.7	OR138	Improve	ODOT	Douglas
1	6	<b>Lone Rock Bridge to Narrows Wayside:</b> Shoulder bike path on OR138	Bike/ Ped	2	4	3.3	OR138	Improve	ODOT	Douglas
1	7	<b>Narrows to Swiftwater Trail:</b> New trail from proposed Narrows wayside bridge to Swiftwater trail	Bike/ Ped	1	4	0.7	BLM Trails	New	BLM	Douglas
1	8	<b>Swiftwater Trail to Trailhead:</b> Improved trail from top of hill down to trailhead	Bike/ Ped	1	4	0.9	BLM Trails	Improve	BLM	Douglas
1	9	<b>Swiftwater Trailhead to Bob Creek:</b> Separated bike-ped path on North Umpqua Trail (NUT)	Bike/ Ped	1	4	5.7	NUT	Improve	BLM	Douglas
1	10	<b>Bob Creek to Tioga Bridge:</b> Separated bike-ped path on NUT	Bike/ Ped	1	4	1.6	NUT	Existing	BLM	Douglas
1	11	<b>Tioga Bridge to Boundary Road:</b> Shared roadway on OR138	Bike/ Ped	3	4	1.0	OR138	Improve	BLM (need to verify no improvements to ODOT ROW)	Douglas
1	12	<b>Boundary Road to Fall Creek Falls:</b> Shared roadway on Boundary Road	Bike/ Ped	3	4	4.4	NUT	Improve	BLM; USFS	Douglas



Table 3. Summary of Bridge and Site Needs.

Segment	Need ID	Name and Description	Type	Facility	Status	Owner	County
1	20	<b>Gateway:</b> Gateway to Scenic Byway at or near Sunshine Park	Recreation	OR138	New	ODOT	Douglas
1	21	<b>Bicycle-Pedestrian Highway Crossing:</b> Bicycle-Pedestrian Highway Crossing from OR-138 to Little River Road	Crossing	OR138	New	ODOT	Douglas
1	22	<b>Bicycle-Pedestrian Safety Improvements on Bridge:</b> Bicycle-Pedestrian safety improvements on bridge at Colliding Rivers	Bridge	OR138	Improved	ODOT	Douglas
1	23	<b>Gateway:</b> Gateway to Scenic Byway at or near USFS North Umpqua Ranger District office	Recreation	OR138	New	USFS/City	Douglas
1	24	<b>Bicycle-Pedestrian Highway Crossing:</b> Bicycle-Pedestrian Highway Crossing to connect Glide separated bike path across OR 138	Crossing	OR138	New	ODOT	Douglas
1	25	<b>Bicycle-Pedestrian Highway Crossing:</b> Bicycle-Pedestrian Highway Crossing to connect Glide separated bike path across OR 139	Crossing	OR138	New	ODOT	Douglas
1	26	<b>Proposed Bicycle-Pedestrian Bridge:</b> Proposed bicycle-pedestrian bridge either attached to existing Lone Rock bridge or next to bridge	Bridge	OR138	New	ODOT	Douglas
1	27	<b>Proposed Bicycle-Pedestrian Bridge:</b> Proposed bicycle-pedestrian bridge crossing the North Umpqua River at Narrows Wayside to BLM lands	Bridge	OR138	New	USFS	Douglas
1	28	<b>Bicycle-Pedestrian Safety Improvements on Bridge:</b> Bicycle-Pedestrian safety improvements on Tioga bridge as needed	Bridge	OR138	Improved	BLM	Douglas



## Identified Needs (Roseburg to Glide)

Esri, TomTom, Garmin, FAO, NOAA, USGS, EPA, USFWS, Earthstar Geographics, Oregon State Parks, State of Oregon GEO, Esri, TomTom, Garmin, SafeGraph, GeoTechnologies, Inc, METI/NASA, USGS, Bureau of Land Management, EPA, NPS, USDA, USFWS, Esri, USGS

2024

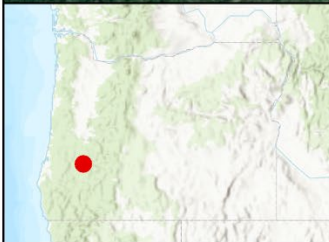
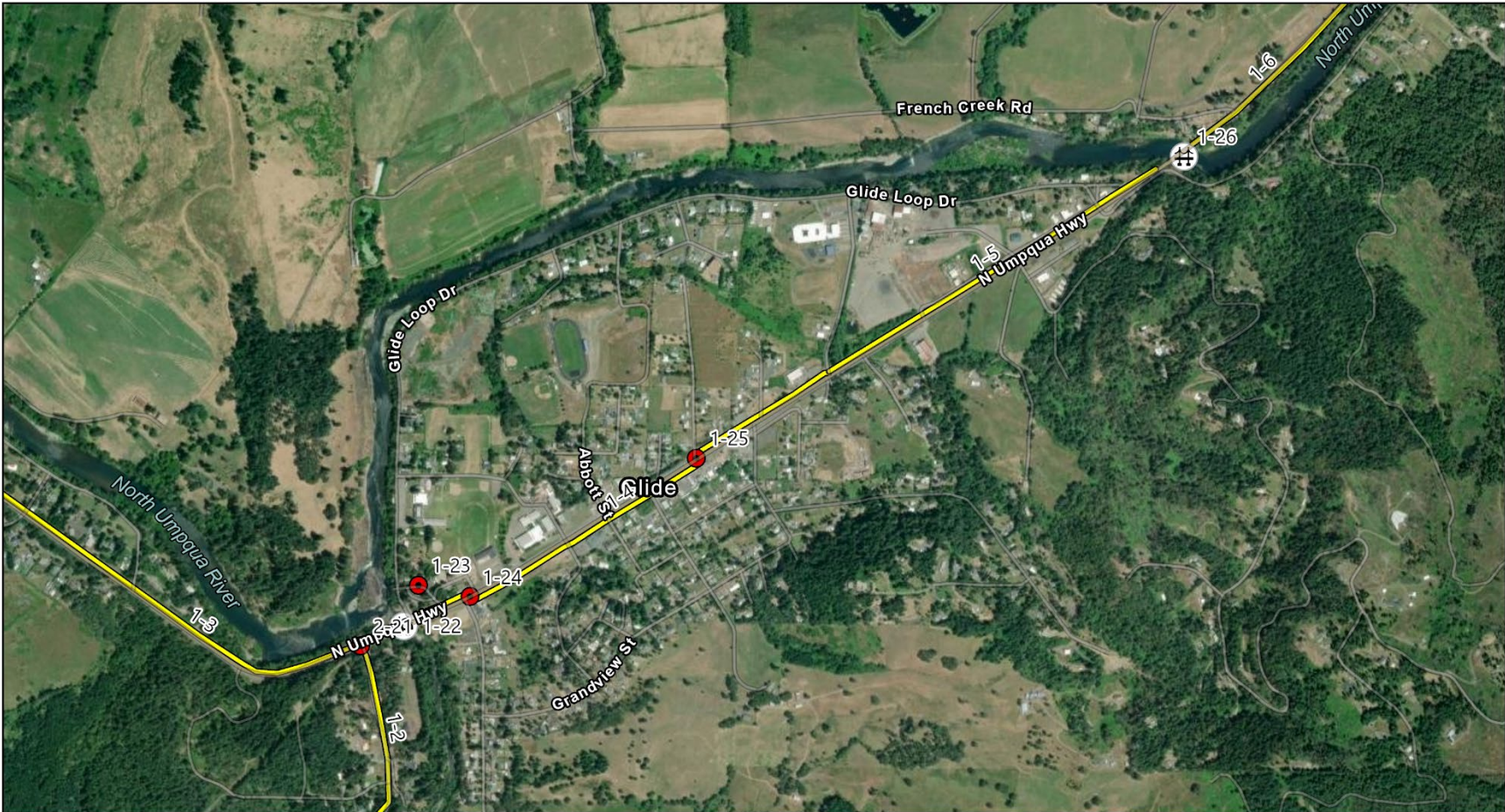
Coordinate System: WGS 1984 Web Mercator Auxiliary Sphere

- Bike-Ped. Improvements
- Bridge Improvements
- Recreation & Site Improvements

N

0 2 4 M








## Identified Needs (Glide)


Esri, TomTom, Garmin, FAO, NOAA, USGS, EPA, USFWS, Oregon State Parks, State of Oregon GEO, Esri, TomTom, Garmin, SafeGraph, GeoTechnologies, Inc, METI/NASA, USGS, Bureau of Land Management, EPA, NPS, US Census Bureau, USDA, USFWS, Esri, USGS, Maxar

# 2024

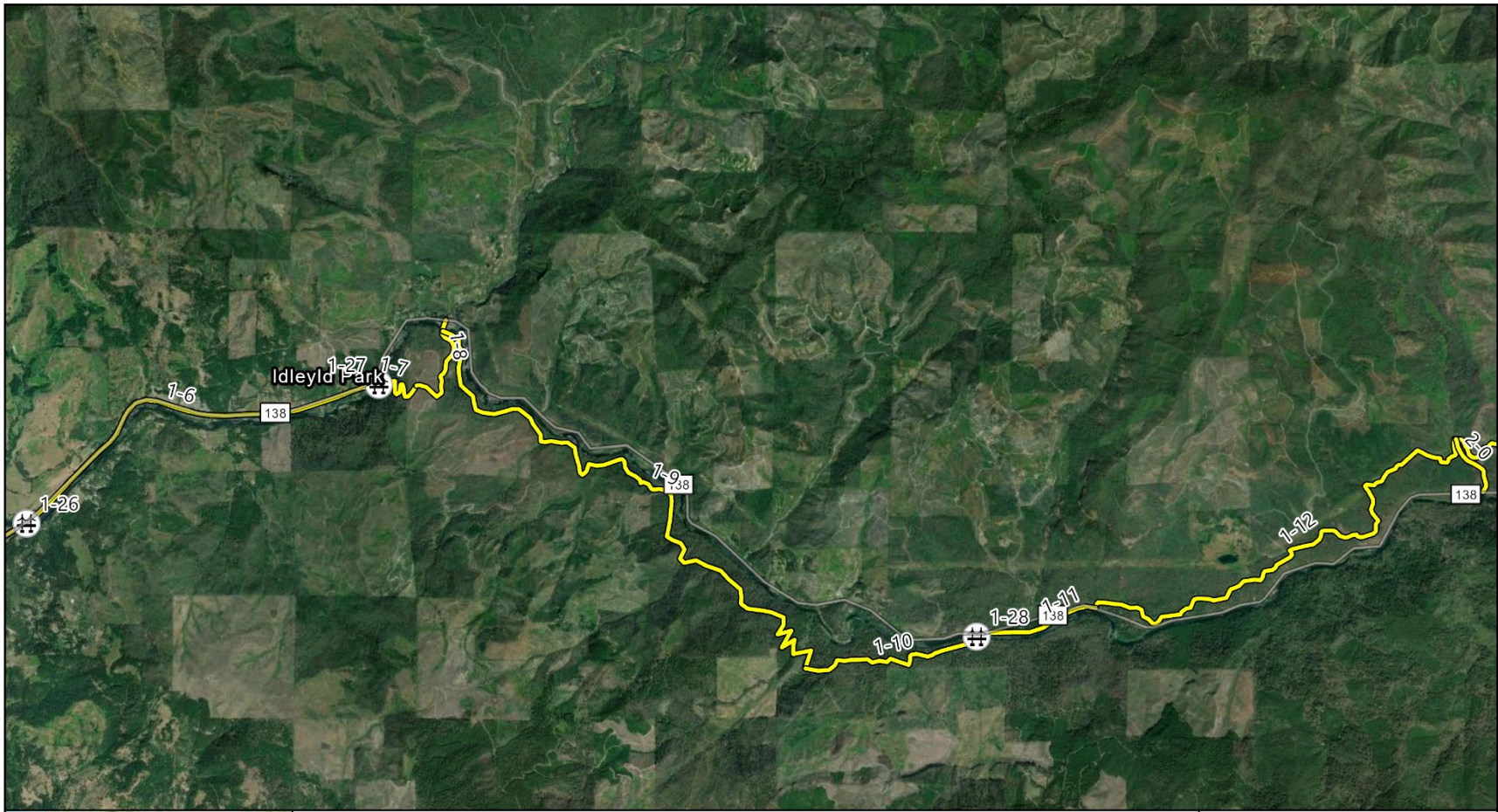
Coordinate System: WGS 1984 Web Mercator Auxiliary Sphere

	Bike-Ped. Improvements
	Bridge Improvements
	Recreation & Site Improvements

0 0.33 0.65 Mi





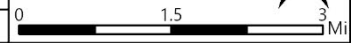


## Identified Needs (Idleyld to Fall Creek Falls)

Esri, TomTom, Garmin, FAO, NOAA, USGS, EPA, USFWS, Earthstar Geographics, Oregon State Parks, State of Oregon GEO, Esri, TomTom, Garmin, SafeGraph, GeoTechnologies, Inc, METI/NASA, USGS, Bureau of Land Management, EPA, NPS, USDA, USFWS, Esri, USGS

# 2024

-  Bike-Ped. Improvements
-  Bridge Improvements
-  Recreation & Site Improvements



Coordinate System: WGS 1984 Web Mercator Auxiliary Sphere



## Segment 2 - North Umpqua (East)

Segment 2 (North Umpqua (East)) includes the portions of OR 138 within the USFS Umpqua National Forest from west of Fall Creek Falls to Lemolo Lake. This segment includes Douglas County, ODOT, and the USFS North Umpqua Ranger District as land managers and transportation facility owners. Other interested public agencies include the Cow Creek Band of the Umpqua Tribe of Indians and the National Park Service (NPS), Crater Lake National Park. Table 4 and Table 5 list the project needs identified for Segment 2 – North Umpqua (East).

Table 4. Summary of Segment 2 Bicycle/Pedestrian Needs

Segment	Need ID	Name and Description	Type	Tier	USFS Standard	Length (mi)	Facility	Status	Owner	County
2	0	<b>Fall Creek Falls Trail:</b> Separated bike-ped path on NUT	Pedestrian	1	4	0.5	Fall Creek Falls	Improve	USFS	Douglas
2	1	<b>Fall Creek Falls to Williams Creek:</b> Separated bike-ped path on NUT. <i>Consider Riverview Trail and the connecting FS-4710 Road from Susan Creek Campground to Steamboat Road as an alternate route.</i>	Bike/Ped	1	4	5.5	NUT	Improve	USFS	Douglas
2	2	<b>Williams Creek to Canton Creek Campground:</b> Separated bike-ped path on NUT	Bike/Ped	1	4	2.3	NUT	Improve	USFS	Douglas
2	3	<b>Canton Creek Campground to Mott Bridge:</b> Shoulder bike path on OR138	Bike/Ped	2	4	0.3	OR138	Improve	ODOT	Douglas
2	4	<b>Mott Bridge to Panther Creek Bridge:</b> Separated bike-ped path on NUT	Bike/Ped	1	4	4.6	NUT	Improve	USFS	Douglas
2	5	<b>Panther Creek Bridge to Calf Creek Trailhead:</b> Separated bike-ped path on NUT	Bike/Ped	1	4	3.8	NUT	Improve	USFS	Douglas
2	6	<b>Calf Creek Trailhead to OR 138:</b> Shared roadway on NF-4750	Bike/Ped	3	4	0.5	NF-4750	Improve	USFS	Douglas
2	7	<b>NF-4750 to Happy Creek Lane:</b> Separated bike-ped path between OR138 and river from NF-4750 to Happy Creek Lane (may require highway crossing or undercrossing)	Bike/Ped	1	4	0.6	OR138	New	ODOT	Douglas
2	8	<b>NF-4750 to Marsters Trailhead:</b> Separated bike-ped path on NUT	Bike/Ped	1	4	3.5	NUT	Improve	USFS	Douglas
2	9	<b>Marsters Trailhead to Marsters Bridge:</b> Shared roadway on NF-4770	Bike/Ped	3	4	0.4	NF-4770	Improve	USFS	Douglas
2	10	<b>Marsters Bridge to Soda Springs Trailhead:</b> Separated bike-ped path on NUT	Bike/Ped	1	4	4.7	NUT	Improve	USFS	Douglas

Segment	Need ID	Name and Description	Type	Tier	USFS Standard	Length (mi)	Facility	Status	Owner	County
2	11	<b>Soda Springs Trailhead to Toketee Campground:</b> Separated bike-ped path on NUT	Bike/Ped	1	4	8.4	NUT	Improve	USFS	Douglas
2	12	<b>Toketee Campground to NF-4776 Clearwater:</b> Shared roadway on NF-4776 (Toketee Ranger Station Road)	Bike/Ped	3	4	2.3	NUT	Existing	USFS	Douglas
2	13	<b>NF-4776 Clearwater to Stump Lake:</b> Separated bike-ped path between NF-4776 to Stump Lake	Bike/Ped	1	4	6.6	NUT	Improve	USFS	Douglas
2	14	<b>Stump Lake to Clearwater Falls:</b> Separated bike-ped path between Stump Lake and Clearwater Falls along OR138	Bike/Ped	1	4	2.5	OR138	Improve	USFS	Douglas

Table 5. Summary of Bridge and Site Needs.



Segment	Need ID	Name and Description	Type	Facility	Status	Owner	County
2	20	<b>Bicycle-Pedestrian Safety Improvements on Bridge:</b> Bicycle-Pedestrian safety improvements on bridge at Horseshoe Bend and Raft Site	Bridge	FR 4750	Improved	USFS	Douglas
2	21	<b>Electric Vehicle Charging Station(s):</b> Electric Vehicle Charging Station(s) at or near Umpqua's Last Resort	EV	OR138	New	USFS	Douglas
2	22	<b>Bicycle-Pedestrian Safety Improvements on Bridge:</b> Bicycle-Pedestrian safety improvements on Marsters bridge	Bridge	OR138	Improved	ODOT	Douglas
2	23	<b>Bicycle-Pedestrian Safety Improvements on Bridge:</b> Bicycle-Pedestrian safety improvements on bridge at Stump Lake	Bridge	OR138	Improved	ODOT	Douglas
2	24	<b>Proposed Bicycle-Pedestrian Undercrossing:</b> Proposed bicycle-pedestrian culvert undercrossing for OR 138 at NF-4792 and NF-480	Culvert	OR138	New	USFS	Douglas
2	25	<b>Electric Vehicle Charging Station(s):</b> Electric Vehicle Charging Station(s) at or near Diamond Lake Resort, including the nearby gas station,	EV	OR138	New	USFS	Douglas
2	26	<b>Proposed New/Improved Cell Tower:</b> Proposed new/improved cell tower at or near Diamond Lake Resort	Cell Tower	OR138	New	Utility Provider	Douglas
2	27	<b>Upgrade to Existing Interpretive Signs:</b> Upgrade to existing interpretive signs at Thielsen/Mt. Bailey Viewpoint	Interpretive	OR230	Improved	USFS	Douglas
2	28	<b>Upgrade to Existing Sno-Park Facility:</b> Upgrade existing sno-park facility to accommodate all recreation users and bathroom facilities	Sno-Park	OR230	Improved	USFS	Douglas
2	29	<b>Toketee Falls Trailhead:</b> Upgraded trailhead and trail improvements ( <b>needs mapped</b> )	Recreation		Improved	USFS	Douglas
2	30	<b>Toketee Lake Campground:</b> Redesign campground area, boat ramp, trailhead, and day use area ( <b>needs mapped</b> )	Recreation		Improved	USFS	Douglas

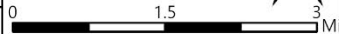


## Identified Needs (Fall Creek Falls to Horseshoe Bend)

Esri, TomTom, Garmin, FAO, NOAA, USGS, EPA, USFWS, Earthstar Geographics, Oregon State Parks, State of Oregon GEO, Esri, TomTom, Garmin, SafeGraph, GeoTechnologies, Inc, METI/NASA, USGS, Bureau of Land Management, EPA, NPS, USDA, USFWS, Esri, USGS

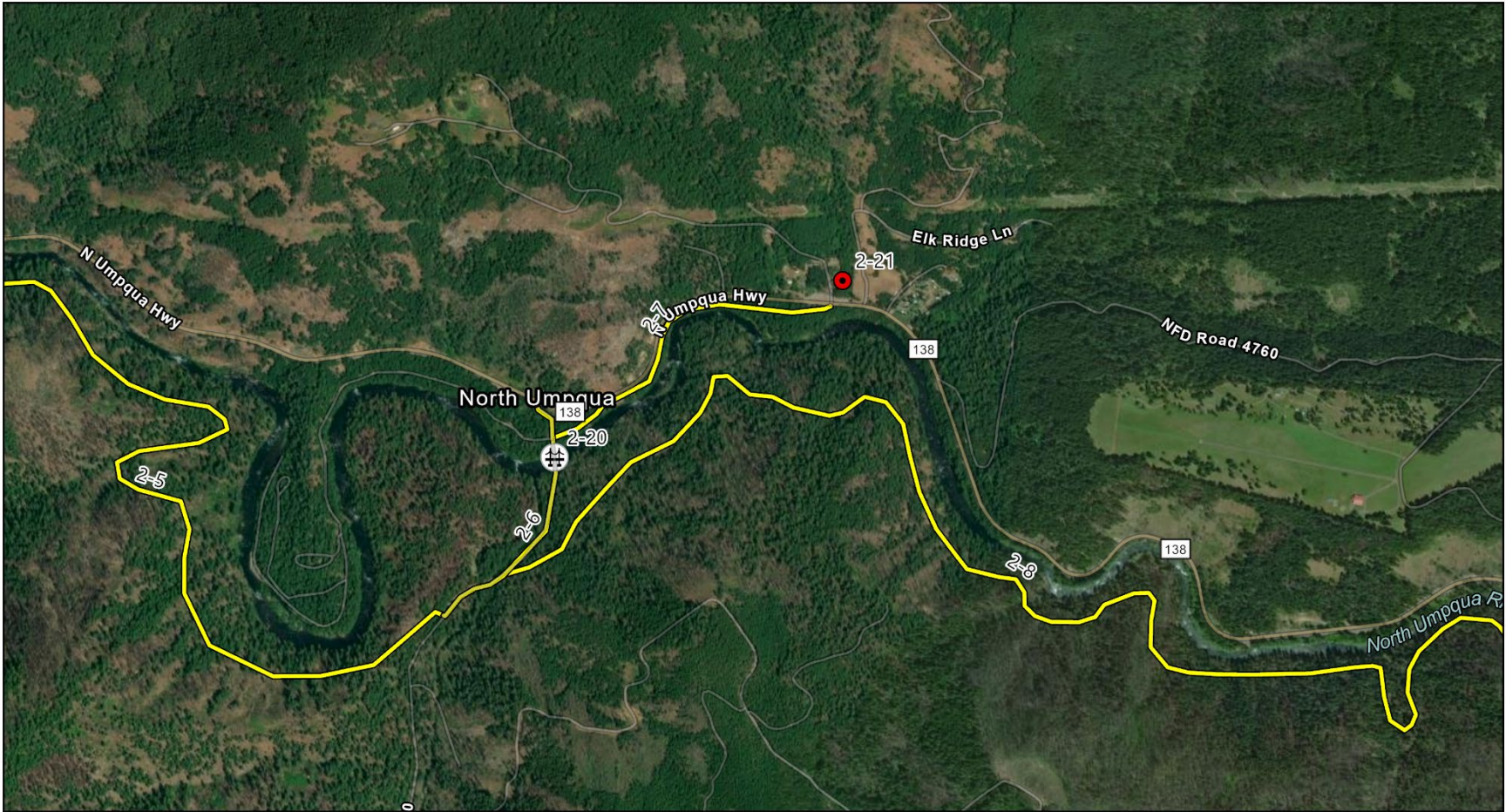
# 2024

-  Bike-Ped. Improvements
-  Bridge Improvements
-  Recreation & Site Improvements



Coordinate System: WGS 1984 Web Mercator Auxiliary Sphere





### Identified Needs (Horseshoe Bend)

Esri, TomTom, Garmin, FAO, NOAA, USGS, EPA, USFWS, Oregon State Parks, State of Oregon GEO, Esri, TomTom, Garmin, SafeGraph, GeoTechnologies, Inc, METI/NASA, USGS, Bureau of Land Management, EPA, NPS, US Census Bureau, USDA, USFWS, Esri, USGS, Maxar

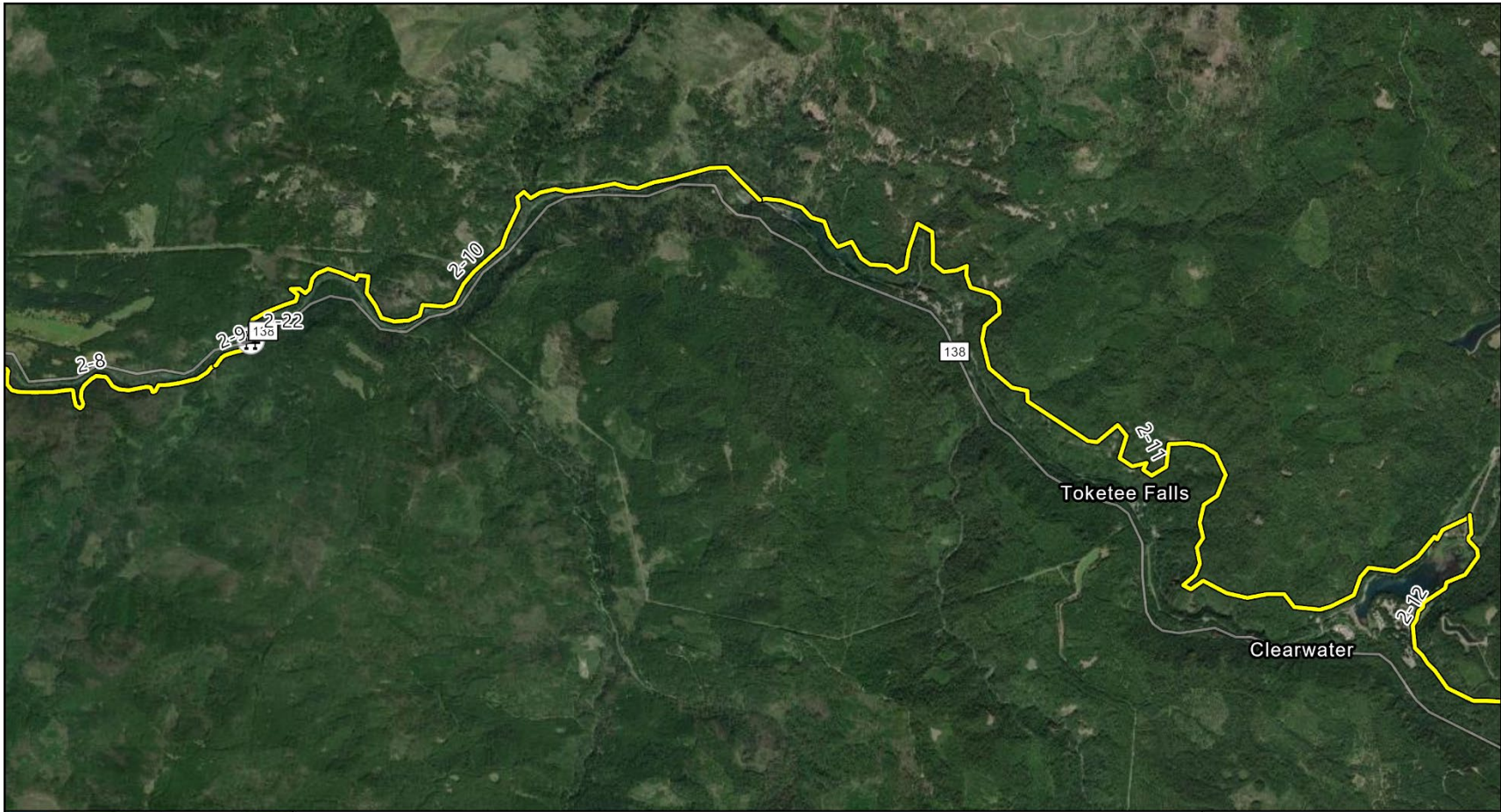
# 2024

Coordinate System: WGS 1984 Web Mercator Auxiliary Sphere

- Bike-Ped. Improvements
- Bridge Improvements
- Recreation & Site Improvements

0 0.35 0.7 Miles



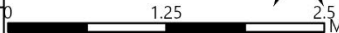


### Identified Needs (Horseshoe Bend to Toketee)

Esri, TomTom, Garmin, FAO, NOAA, USGS, EPA, USFWS, Earthstar Geographics, Oregon State Parks, State of Oregon GEO, Esri, TomTom, Garmin, SafeGraph, GeoTechnologies, Inc, METI/NASA, USGS, Bureau of Land Management, EPA, NPS, USDA, USFWS, Esri, USGS

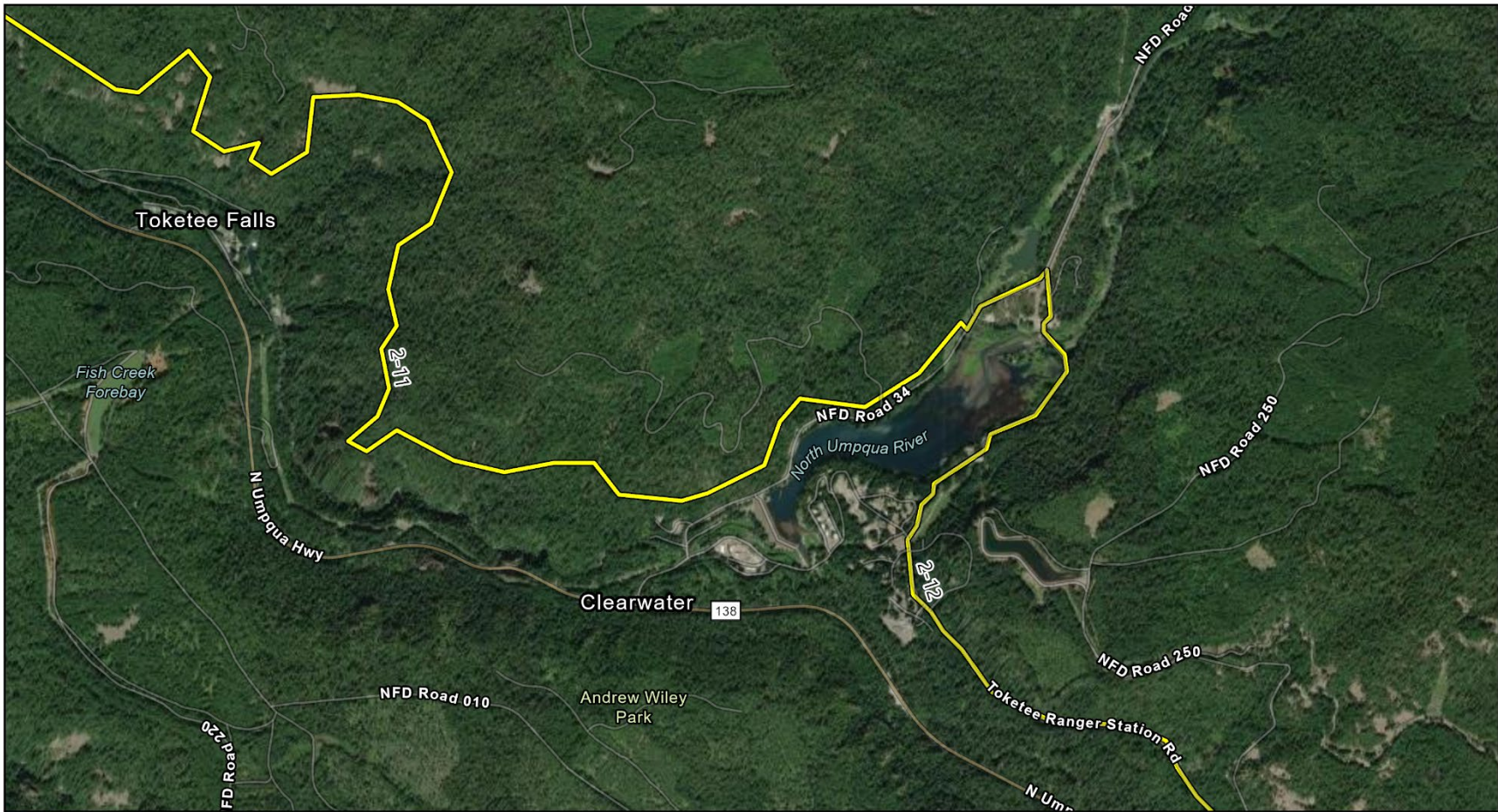
# 2024

- Bike-Ped. Improvements
- Bridge Improvements
- Recreation & Site Improvements



Coordinate System: WGS 1984 Web Mercator Auxiliary Sphere





<b>Identified Needs (Toketee Campground)</b>	
2024	
Esri, TomTom, Garmin, FAO, NOAA, USGS, EPA, USFWS, Oregon State Parks, State of Oregon GEO, Esri, TomTom, Garmin, SafeGraph, GeoTechnologies, Inc, METI/NASA, USGS, Bureau of Land Management, EPA, NPS, US Census Bureau, USDA, USFWS, Esri, USGS, Maxar	
Coordinate System: WGS 1984 Web Mercator Auxiliary Sphere	

<ul style="list-style-type: none"> <li><span style="color: yellow; font-weight: bold;">▬</span> Bike-Ped. Improvements</li> <li> Bridge Improvements</li> <li><span style="color: red; font-weight: bold;">●</span> Recreation &amp; Site Improvements</li> </ul>	<div style="font-size: 2em; font-weight: bold; margin-bottom: 5px;">N</div>





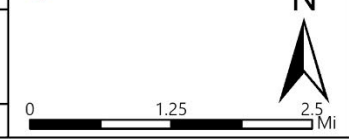
## Identified Needs (Toketee to Lemolo)

Esri, TomTom, Garmin, FAO, NOAA, USGS, EPA, USFWS, Earthstar Geographics, Oregon State Parks, State of Oregon GEO, Esri, TomTom, Garmin, SafeGraph, GeoTechnologies, Inc, METI/NASA, USGS, Bureau of Land Management, EPA, NPS, USDA, USFWS, Esri, USGS

# 2024

Coordinate System: WGS 1984 Web Mercator Auxiliary Sphere

-  Bike-Ped. Improvements
-  Bridge Improvements
-  Recreation & Site Improvements



## Segment 3 – Diamond Lake

This segment includes the USFS lands around Lemolo Lake, Diamond Lake, and the gap between Diamond Lake and the northern boundary of the Rogue River-Siskiyou National Forest. This segment also includes access to the North Entrance of Crater Lake National Park. This segment includes Douglas County, ODOT, NPS, and the USFS North Umpqua Ranger District as land managers and transportation facility owners. Other interested public agencies include the Cow Creek Band of the Umpqua Tribe of Indians and NPS Crater Lake National Park. Table 6 and Table 7 list the project needs identified for Segment 3 – Diamond Lake.

Table 6. Summary of Segment 3 Bicycle/Pedestrian Needs

Segment	Need ID	Name and Description	Type	Tier	USFS Standard	Length (mi)	Facility	Status	Owner	County
3	1	<b>Clearwater Falls to NF-430:</b> Separated bike-ped path between Clearwater Falls and NF-430 along OR138	Bike/Ped	1	4	3.9	OR138	New	ODOT	Douglas
3	2	<b>Birds Point Road to Poole Creek Campground:</b> Shared roadway on Birds Point Road from OR138 to Poole Creel Campground	Bike/Ped	3	4	4.0	Birds Point Road (NF 2610)	Improve	USFS	Douglas
3	3	<b>NF-430 to East Lemolo Campground:</b> Shared Roadway on NF-430 and connecting USFS roads to East Lemolo Campground	Bike/Ped	3	4	4.1	NF-430	Improve	USFS	Douglas
3	4	<b>NF-4792 (Sheep Creek) from OR 130 to Diamond Lake Resort:</b> Shared Roadway on NF-4792 (Sheep Creek) from OR138 to Diamond Lake Resort	Bike/Ped	3	4	6.4	NF-4792	Improve	USFS	Douglas
3	5	<b>NF-480 to Diamond Lake Horse Crossing Culvert:</b> Separated bike-ped path from NF-480 to Diamond Lake Horse Crossing culvert on east side of highway	Bike/Ped	1	4	5.3	OR138	New	ODOT	Douglas
3	6	<b>NF-4792 to NF-050:</b> Separated bike-ped path from NF-4792 to NF-050 along OR138 on west side of highway <b>(add MPs)</b>	Bike/Ped	1	4	4.1	OR138	New	ODOT	Douglas
3	7	<b>NF-050 to OR 230 Interchange:</b> Separated bike-ped path along OR138 from NF-050 to OR230 interchange on west side of highway	Bike/Ped	1	4	5.3	OR138	New	ODOT	Douglas
3	8	<b>OR 230/138 Interchange to Claude Lewis Sno-Park:</b> Separated bike-ped path along OR230 from interchange with OR138 to Claude Lewis Sno park on north side of highway	Bike/Ped	1	4	12.3	OR230	New	ODOT	Douglas



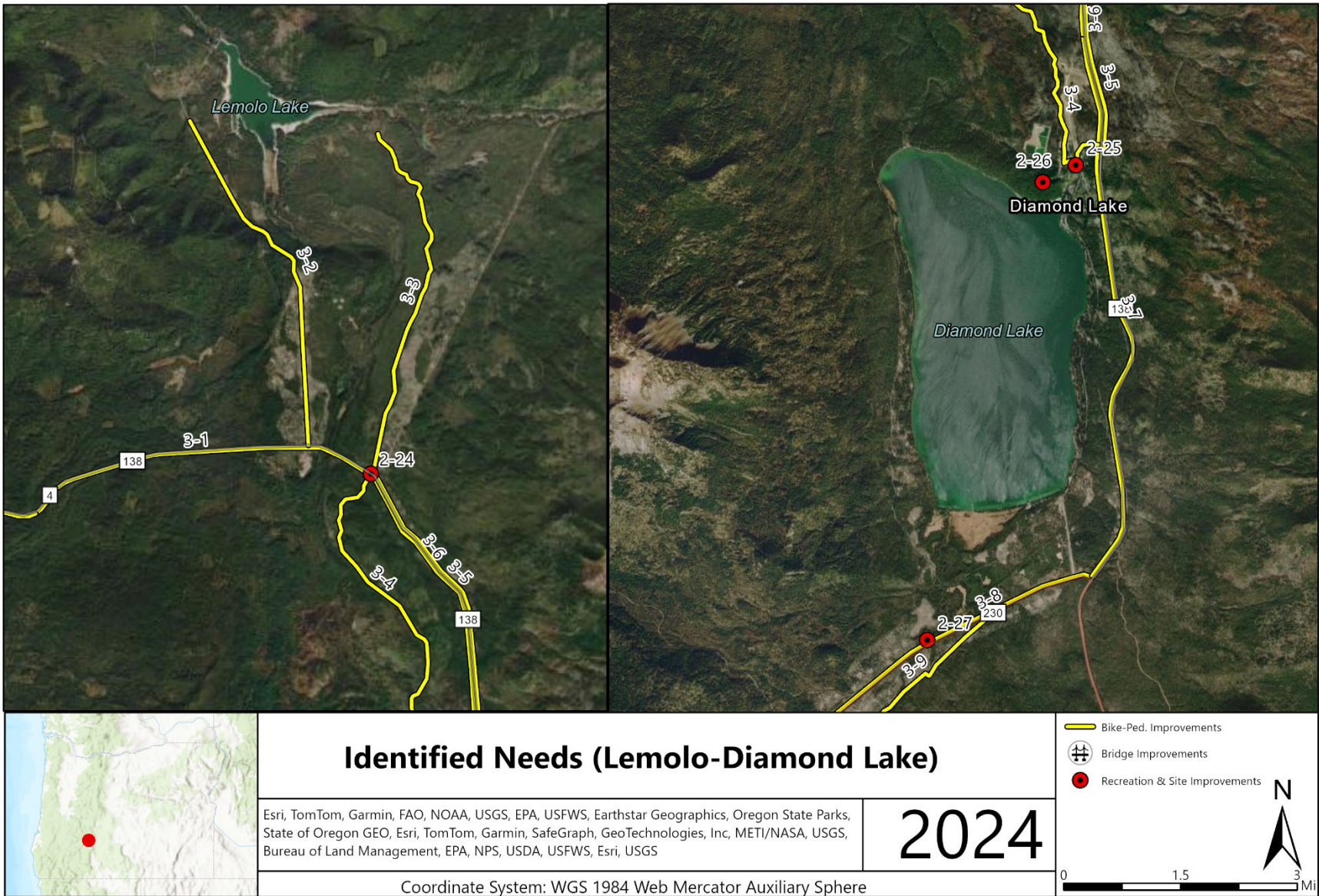
Segment	Need ID	Name and Description	Type	Tier	USFS Standard	Length (mi)	Facility	Status	Owner	County
3	9	<b>Old Diamond Lake Highway from OR 230 MP 23 to MP 12:</b> Shared roadway on Old Diamond Lake Highway from OR230 at MP 23 to MP 12	Bike/Ped	3	4	11.8	Old Diamond Lake Highway	Improve	USFS	Douglas
3	10	<b>NF-2901 at OR 230 MP 12 to NF-6530 at OR 230 MP 6:</b> Shared roadway on NF-2901 NF-2901 at OR 230 MP 12 to NF-6530 at OR 230 MP 6	Bike/Ped	3	4	8.1	NF-6530	Improve	USFS	Douglas
3	11	<b>Claude Lewis Sno-Park to OR 62 MP 8:</b> Separated bike-ped path along OR230 from Claude Lewis Sno-Park or OR62 at MP 6	Bike/Ped	1	4	3.3	OR62	New	ODOT	Douglas
3	12	<b>OR 62 MP 8 to NF-6530:</b> Separated bike-ped path along OR 62 MP 8 to NF-6530	Bike/Ped	1	4	2.1	OR62	New	ODOT	Douglas
3	13	<b>Lemolo Lake Loop Roads:</b> Shared road improvements for loop road around Lemolo Lake to connect campgrounds and the NUT. <b>(needs mapped)</b>	Bike/Ped	3	4	X.X	NF 2610, NF-2612, NF 2614	Improve	USFS	Douglas

Table 7. Summary of Bridge and Site Needs.

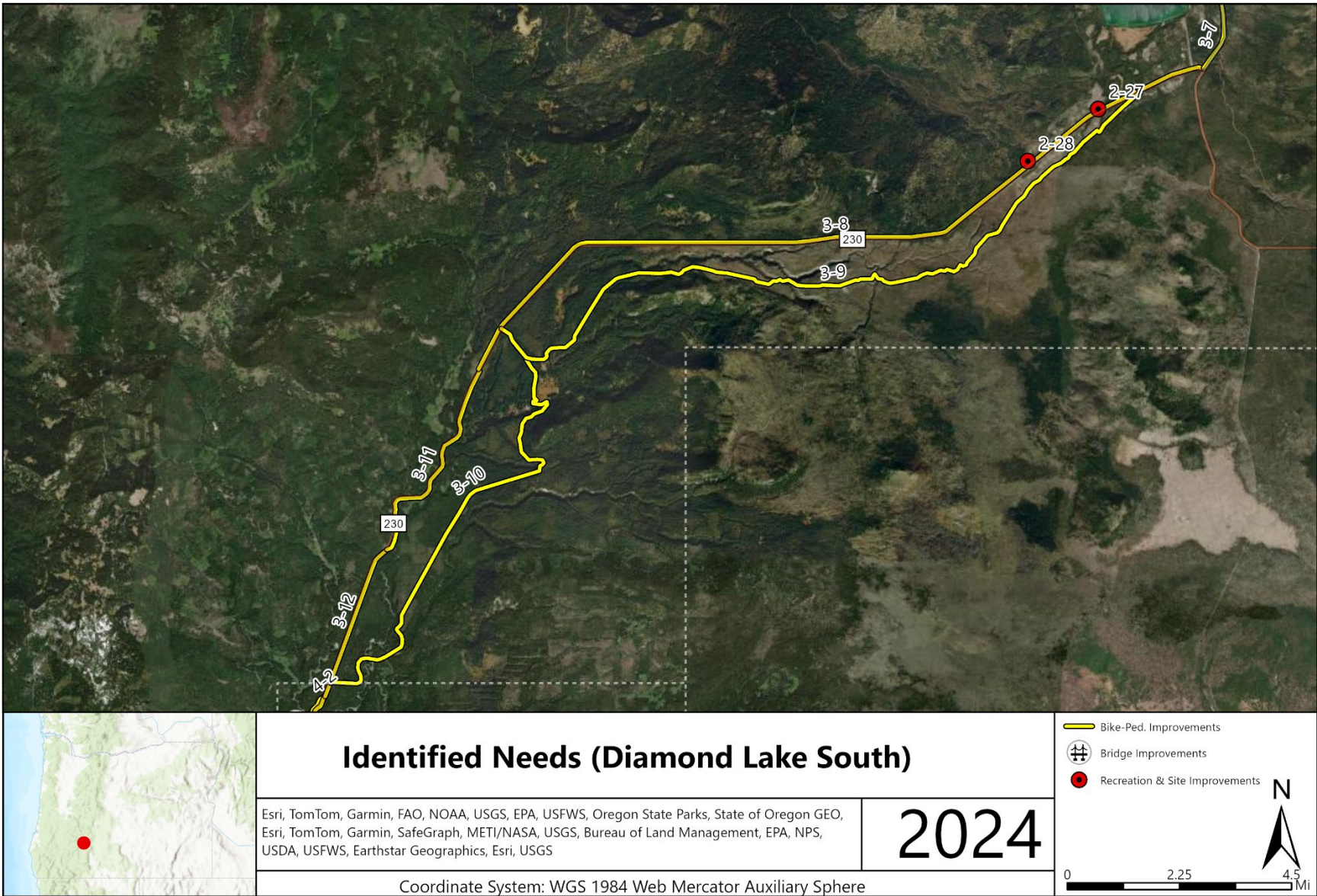
Segment	Need ID	Name and Description	Type	Facility	Status	Owner	County
3	20	<b>Bicycle-Pedestrian safety improvements on bridge:</b> Bicycle-Pedestrian safety improvements on bridge <b>(add MP)</b>	Bridge	OR230	Improved	ODOT	Douglas
3	21	<b>Bicycle-Pedestrian safety improvements on bridge:</b> Bicycle-Pedestrian safety improvements on bridge at Muir Creek	Bridge	OR230	Improved	ODOT	Douglas
3	22	<b>Bicycle-Pedestrian safety improvements on bridge:</b> Bicycle-Pedestrian safety improvements on bridge at OR230 MP 1	Bridge	FR 6510	Improved	USFS	Douglas
3	23	<b>Bicycle-Pedestrian Highway Crossing:</b> Bicycle-Pedestrian Highway Crossing at OR230 and OR62 interchange	Crossing	OR62	New	ODOT	Douglas
3	24	<b>Proposed bicycle-pedestrian bridge:</b> Proposed bicycle-pedestrian bridge to connect proposed bike path at Fairwell Bend Campground and improved Rogue River Trail on opposite bank	Bridge	OR62	New	USFS	Douglas
3	25	<b>Electric Vehicle Charging Station(s):</b> Electric Vehicle Charging Station(s) at or near Union Creek Campground	EV	OR62	New	USFS	Douglas
3	26	<b>Bicycle-Pedestrian Highway Crossing:</b> Bicycle-Pedestrian Highway Crossing on OR62 between Union Creek Campground and Union Creek Resort	Crossing	OR62	New	ODOT	Douglas
3	27	<b>Bicycle-Pedestrian safety improvements on bridge:</b> Bicycle-Pedestrian safety improvements on Natural Bridge	Bridge	OR62	Improved	ODOT	Douglas

3	28	<b>Bicycle-Pedestrian Highway Crossing:</b> Bicycle-Pedestrian Highway Crossing between High Cascades Ranger Station and proposed separated bike path on OR62	Crossing	OR62	New	USFS	Douglas
3	29	<b>Electric Vehicle Charging Station(s):</b> Electric Vehicle Charging Station(s) at or near Prospect Public Library	EV	OR62	New	City	Douglas
3	30	<b>Bicycle-Pedestrian safety improvements on bridge:</b> Bicycle-Pedestrian safety improvements on bridge at OR62 MP 43.5	Bridge	OR62	Improved	ODOT	Douglas
3	31	<b>Lemolo Lake Trailheads:</b> Upgrade two trailheads on the 2610 and 2614 roads that access the NUT and Lemolo Lake Trail.	Recreation				











## Segment 4 - Rogue River-Siskiyou and Crater Lake

Segment 3 (Rogue River Siskiyou and Crater Lake) includes OR 230 and 62 through Rogue River- Siskiyou National Forest and connecting to Crater Lake National Park. This segment includes Jackson County, ODOT, USFS Rogue River-Siskiyou National Forest, and NPS Crater Lake National Forest as land managers and transportation facility owners. Other interested public agencies include the Cow Creek Band of the Umpqua Tribe of Indians. Table 8 and Table 9 list the project needs identified for Segment 4 – Rogue River-Siskiyou and Crater Lake.

Table 8. Summary of Segment 4 Bicycle/Pedestrian Needs

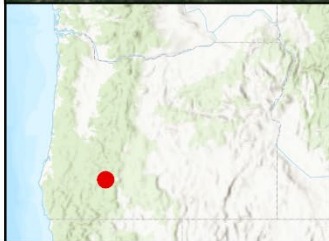
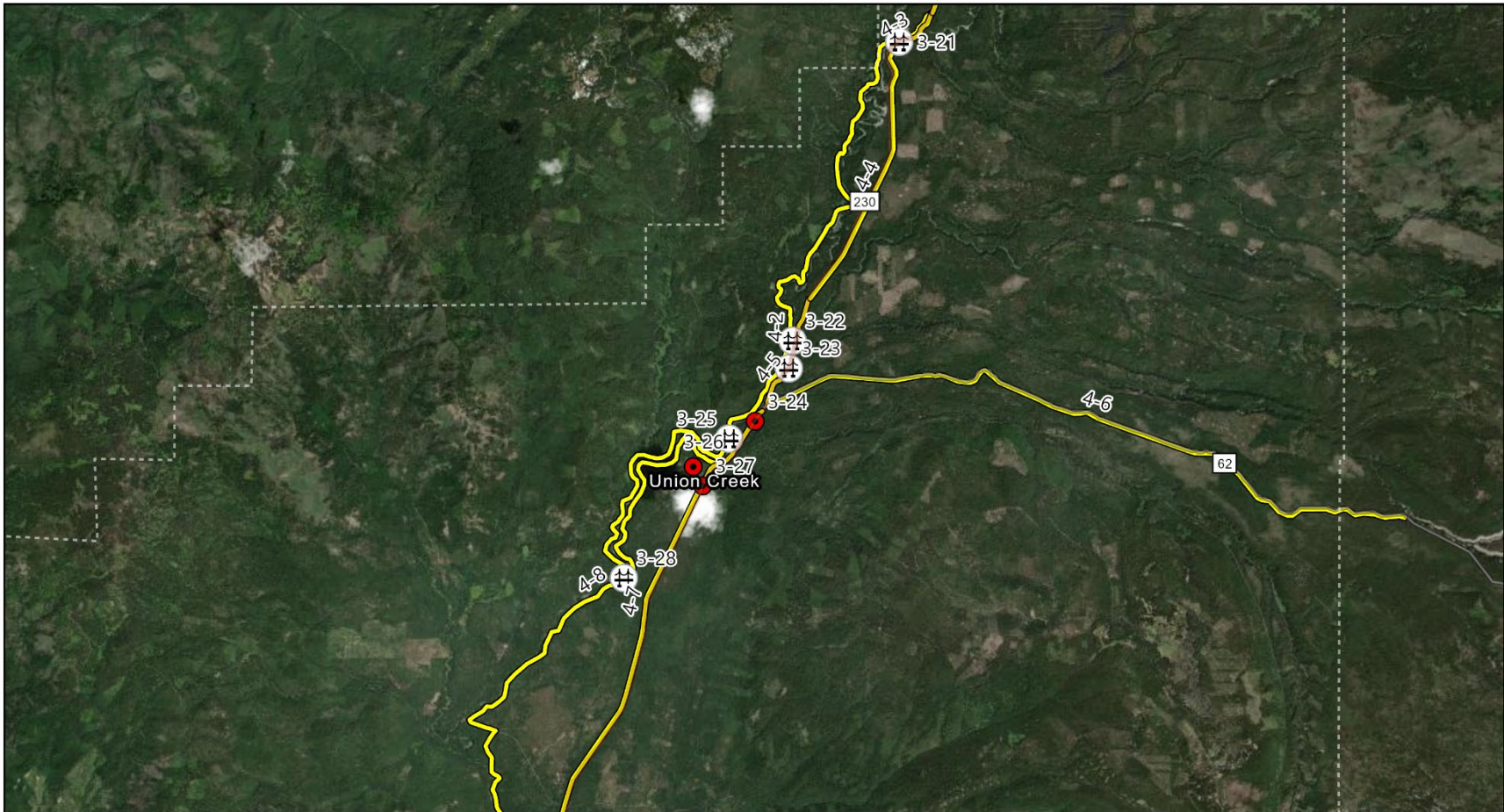
Segment	Need ID	Name and Description	Type	Tier	USFS Standard	Length (mi)	Facility	Status	Owner	County
4	1	<b>Rogue River Trail to NF-6530:</b> Separated bike-ped path on OR230 to NF-6530. <i>Determine if there are other off-highway low-volume roads that offer an alternative parallel route.</i>	Bike/Ped	1	4	0.2	OR230	New	ODOT	Jackson
4	2	<b>Rogue River Trail at OR230 to Natural Bridge:</b> Separated bike-ped path on RRT at OR230 to Natural Bridge	Bike/Ped	1	4	11.2	Rogue River Trail	Improve	USFS	Jackson
4	3	<b>Upper Rogue River Trail at OR230 to Bridge at MP 5.25:</b> Separated bike-ped path on RRT at OR230 to bridge at MP 5.25	Bike/Ped	1	4	0.8	OR230	Improve	ODOT	Jackson
4	4	<b>OR 230 from MP 5.25 to MP 2:</b> Separated bike-ped path along OE 230 from MP 5.25 to MP 2	Bike/Ped	1	4	3.5	OR230	New	ODOT	Jackson
4	5	<b>OR 230 from MP 2 to OR 62 Interchange:</b> Shoulder bike path along OR230 from MP 2 to OR 62 interchange	Bike/Ped	2	4	1.5	OR230	Improve	ODOT	Jackson
4	6	<b>OR62/230 Interchange to MP 66:</b> Separated bike-ped path along south side of OR62 from interchange with OR230 to MP 66	Bike/Ped	1	4	9.0	OR62	New	ODOT	Jackson
4	7	<b>OR 62 from MP 57 to High Cascades Ranger Station:</b> Separated bike-ped path along west side of OR62 from OR 230 interchange to High Cascades Ranger Station	Bike/Ped	1	4	11.7	OR62	New	ODOT	Jackson
4	8	<b>Rogue Gorge Trail from Farewell Bend to Discovery OHV:</b> Separated bike-ped path on Rogue Gorge Trail from Farewell Bend Campground to Discovery OHV	Bike/Ped	3	4	11.0	Rogue Gorge Trail	Improve	USFS	Jackson

Segment	Need ID	Name and Description	Type	Tier	USFS Standard	Length (mi)	Facility	Status	Owner	County
4	9	<b>Discovery OHV from Rogue Gorge Trail to High Cascades Ranger Station:</b> Shared roadway on Discovery OHV to High Cascades Ranger Station	Bike/Ped	3	4	3.6	Discovery OHV	Improve	USFS	Jackson
4	10	<b>Rogue Gorge Trail from River Bridger Campground to High Cascades Ranger Station:</b> Separated bike-ped path on Rogue Gorge Trail from River Bridge Campground to High Cascades Ranger Station	Bike/Ped	1	4	3.8	Rogue Gorge Trail	Improve	USFS	Jackson

Table 9. Summary of Bridge and Site Needs.

Segment	Need ID	Description	Type	Facility	Status	Owner	County
4	20	<b>Bicycle-Pedestrian safety improvements on bridge:</b> Bicycle-Pedestrian safety improvements on Peyton bridge	Bridge	OR62	Improved	ODOT	Jackson
4	21	<b>Campground:</b> Design concepts for a new campground at Catfish Cove	Recreation	OR62	New	USFS	Jackson
4	22	<b>Yurts:</b> Expand campground to add yurts	Recreation	OR62	New	USFS	Jackson
4	23	<b>Electric Vehicle Charging Station(s):</b> Electric Vehicle Charging Station(s) at or near Lost Creek Marina	EV	OR62	New	County	Jackson
4	24	<b>Connecting Trail:</b> Explore options for connecting trail over ridge between Lost Creek Trailhead and Lower Elk Creek Trail (also shown in bike-ped needs list)	Recreation	OR62	New	USFS	Jackson
4	25	<b>Campground:</b> Design concepts for new campground at former Elk Creek Lake and dam site	Recreation	OR62	New	BLM	Jackson
4	26	<b>Bicycle-Pedestrian safety improvements on bridge:</b> Bicycle-Pedestrian safety improvements on McLeod bridge	Bridge	OR62	Improved	ODOT	Jackson
4	27	<b>Proposed bicycle-pedestrian bridge:</b> Proposed bicycle-pedestrian bridge crossing Rogue River near OR62 MP 26 connecting to Rogue Elk Park	Bridge	OR62	New	County	Jackson
4	28	<b>Bicycle-Pedestrian safety improvements on bridge:</b> Bicycle-Pedestrian safety improvements on Elk Creek bridge	Bridge	OR62	Improved	ODOT	Jackson
4	29	<b>Bicycle-Pedestrian safety improvements on bridge:</b> Bicycle-Pedestrian safety improvements on Shady Cove bridge	Bridge	OR62	Improved	ODOT	Jackson
4	30	<b>Electric Vehicle Charging Station(s):</b> Electric Vehicle Charging Station(s) at or near Upper Rogue Regional County Park	EV	OR62	New	County	Jackson
4	31	<b>Boat Launch:</b> Boat Launch at or near Upper Rogue Regional County Park	Recreation	OR62	New	County	Jackson
4	32	<b>Bicycle-Pedestrian Highway Crossing:</b> Bicycle-Pedestrian Highway Crossing near Birch Street and OR62	Crossing	OR62	New	ODOT	Jackson





### Identified Needs (Diamond Lake South)

Esri, TomTom, Garmin, FAO, NOAA, USGS, EPA, USFWS, Earthstar Geographics, County of Jackson, OR, Oregon State Parks, State of Oregon GEO, Esri, TomTom, Garmin, SafeGraph, METI/NASA, USGS, Bureau of Land Management, EPA, NPS, USDA, USFWS, Esri, USGS

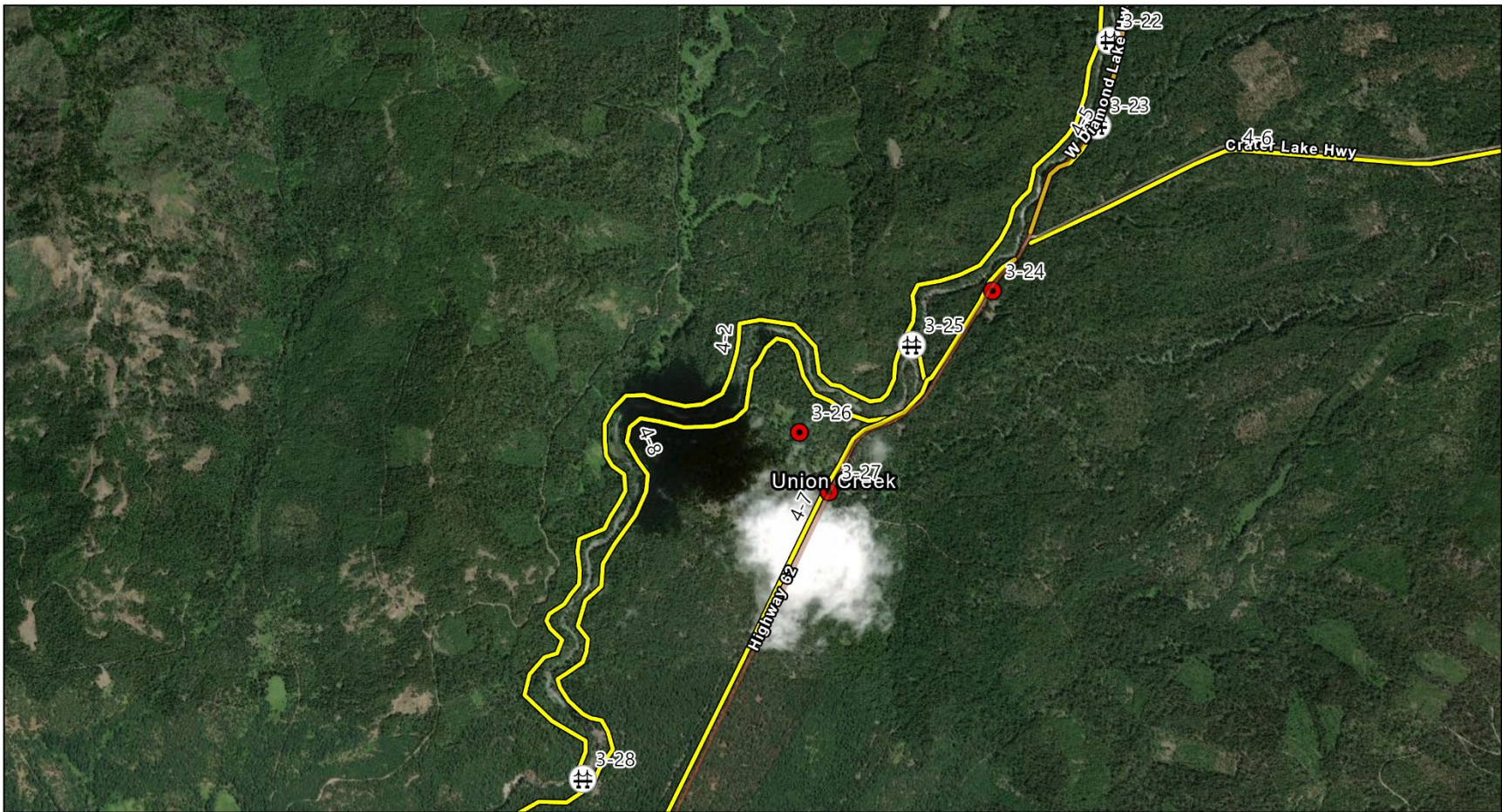
# 2024

- Bike-Ped. Improvements
- Bridge Improvements
- Recreation & Site Improvements

N  
  
 0 2.25 4.5 Mi

Coordinate System: WGS 1984 Web Mercator Auxiliary Sphere

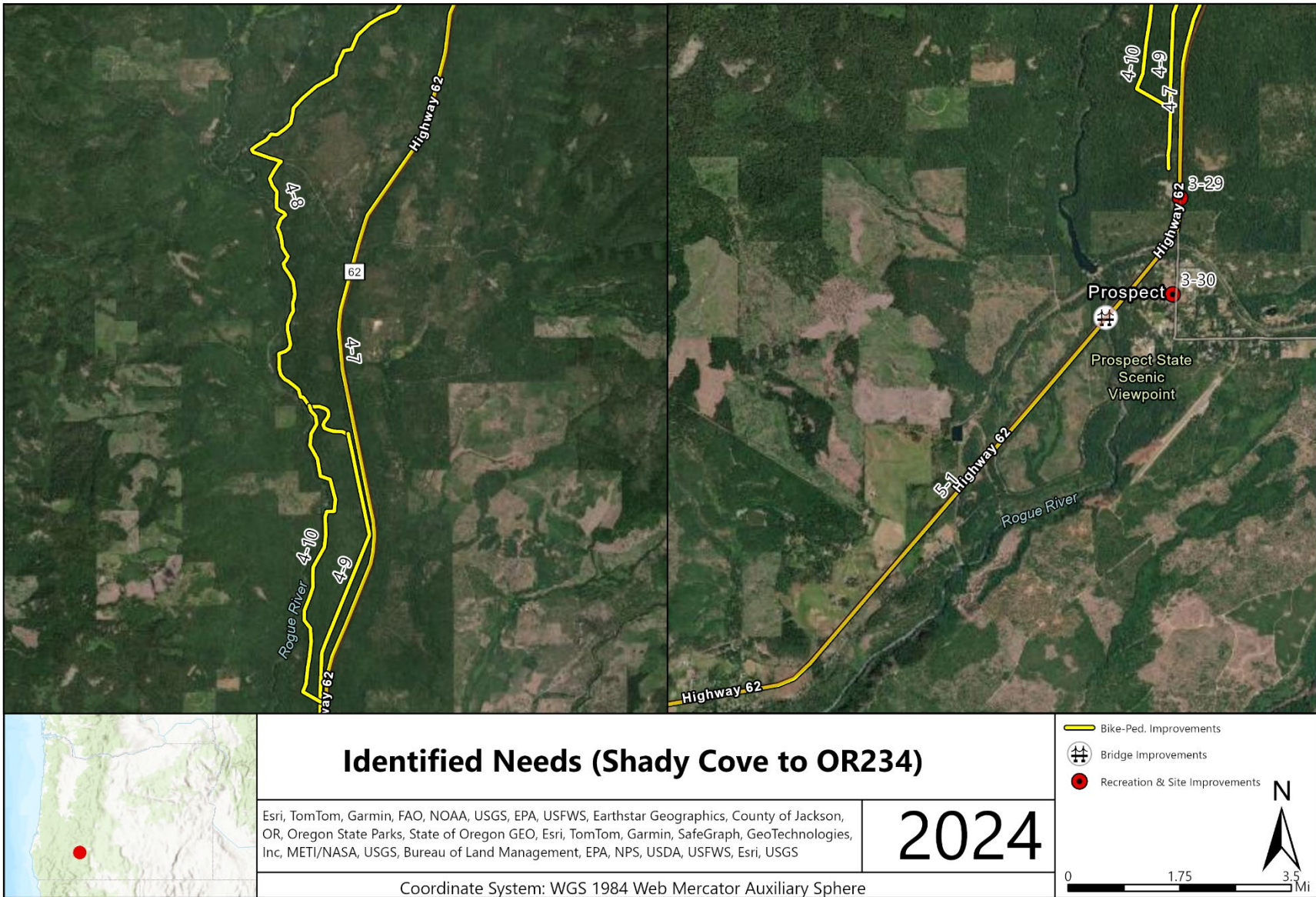




<b>Identified Needs (Union Creek Area)</b>	
Esri, TomTom, Garmin, FAO, NOAA, USGS, EPA, USFWS, County of Jackson, OR, Oregon State Parks, State of Oregon GEO, Esri, TomTom, Garmin, SafeGraph, GeoTechnologies, Inc, METI/NASA, USGS, Bureau of Land Management, EPA, NPS, USDA, USFWS, Esri, USGS, Maxar	<b>2024</b>
Coordinate System: WGS 1984 Web Mercator Auxiliary Sphere	

Bike-Ped. Improvements	 
Bridge Improvements	
Recreation & Site Improvements	





## Segment 5 – Lost Creek Lake

Segment 5 (Lost Creek Lake) includes OR 62 through. This segment includes Jackson County, ODOT, USFS Rogue River- Siskiyou National Forest, NPS Crater Lake National Forest, and the US Army Corps of Engineers (USACE) as land managers and transportation facility owners. Other interested public agencies include the Cow Creek Band of the Umpqua Tribe of Indians and Oregon Parks and Recreation Department (OPRD). Table 8 and

Table 9 list the project needs identified for Segment 5 – Lost Creek Lake.

Table 10. Summary of Segment 5 Bicycle/Pedestrian Needs

Segment	Need ID	Name and Description	Type	Tier	USFS Standard	Length (mi)	Facility	Status	Owner	County
5	1	<b>High Cascades Ranger Station to Peyton Bridge:</b> Separated bike-ped path from High Cascades Ranger Station to Peyton Bridge along OR62 <i>Alternative route to address gap: Mill Creek Road could serve as an off-highway route from Prospect south to its intersection with OR62</i>	Bike/Ped	1/3	4	8.8	OR62	New	ODOT	Jackson
5	2	<b>Peyton Bridge to Mill Creek Drive:</b> Separated bike-ped path from Peyton Bridge to Mill Creek Drive on Rogue Gorge Trail	Bike/Ped	1	4	1.3	Rogue Gorge Trail	New	USACE	Jackson
5	3	<b>North Shore Trail to Takelma Day Use:</b> Separated bike-ped path on North Shore Trail to Takelma Day Use	Bike/Ped	1/3	4	10.7	North Shore Trail	Improve	USACE	Jackson
5	4	<b>Lost Creek Trailhead to Elk Creek Trail:</b> Pedestrian trail from Lost Creek Trailhead to Elk Creek Trail (also identified in site-specific needs list)	Bike/Ped	1	4	3.9	NEW	New	USACE	Jackson
5	5	<b>Peyton Bridge to Joseph Stewart State Park Road:</b> Separated bike-ped path along north side of OR62 from Peyton Bridge to Joseph Stewart State Park Road	Bike/Ped	1	4	1.8	OR62	New	USACE	Jackson
5	6	<b>Peyton Bridge to South Shore Trail:</b> Separated bike-ped path on South Shore Trail from Peyton Bridge to South Shore Trail	Bike/Ped	1	4	2.6	South Shore Trail	Improve	USACE	Jackson
5	7	<b>South Shore Trail to McLeod:</b> Separated bike-ped path on South Shore Trail to McLeod	Bike/Ped	1	4	4.4	South Shore Trail	Improve	USACE	Jackson
5	8	<b>McLeod Bridge to Fishing Access Road:</b> Separated bike-ped path from McLeod Bridge to Fishing Access Road	Bike/Ped	1	4	1.4	McGregor Park Trail	Existing	USACE	Jackson
5	9	<b>Fishing Access Road to Takelma Day Use:</b> Separated bike-ped path from Fishing Access Road to Takelma Day	Bike/Ped	1	4	1.1	New	New	USACE	Jackson
5	10	<b>McLeod Bridge through Casey State Park:</b> Separated bike-ped path through Casey State Park	Bike/Ped	1	4	0.7	OR62	New	OPRD	Jackson



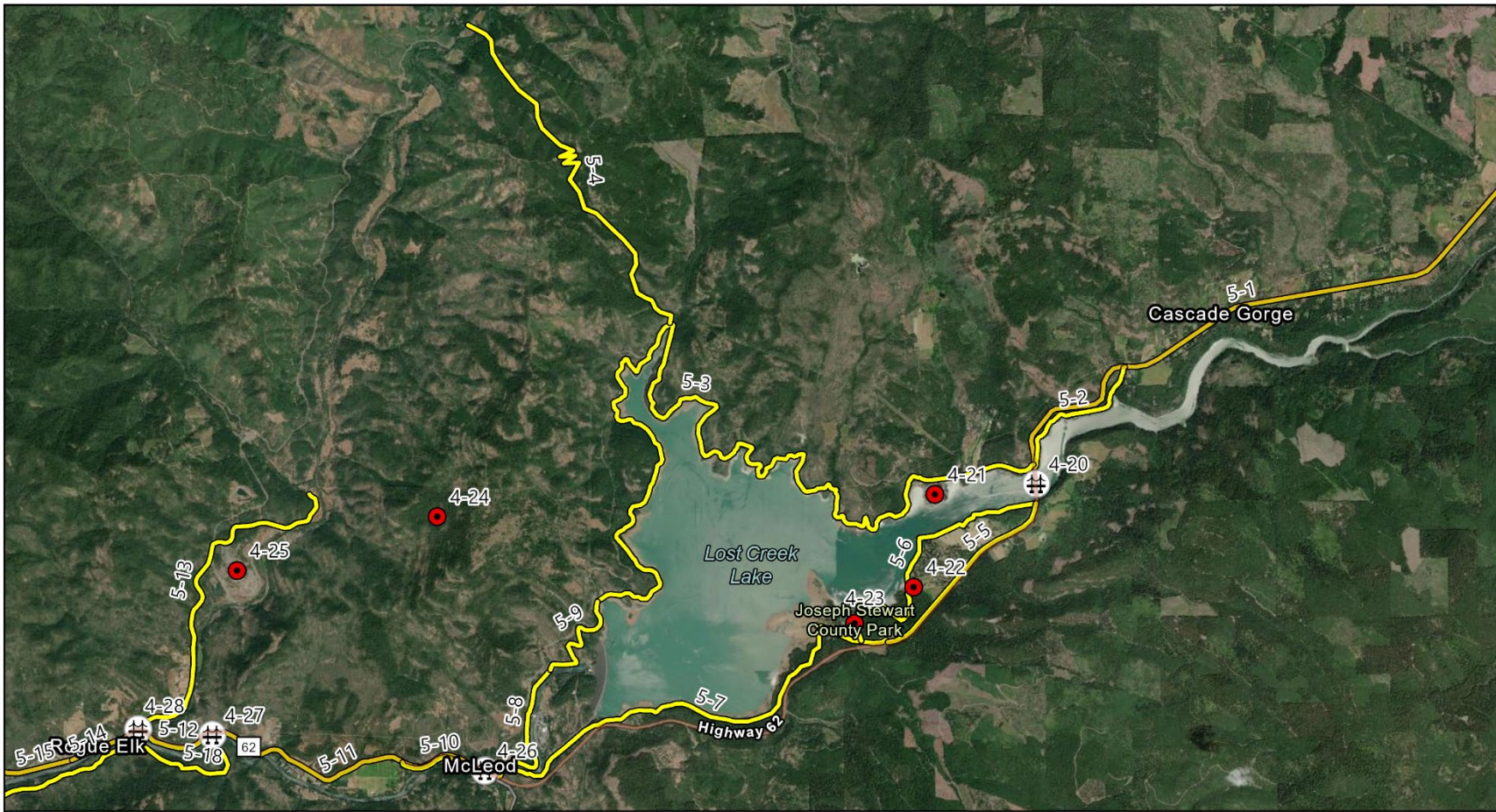
5	11	<b>McLeod Bridge to OR 62 MP 26:</b> Shoulder bike-ped path along OR62 from McLeod Bridge to OR 62 MP 26	Bike/Ped	2	4	2.6	OR62	Improve	ODOT	Jackson
5	12	<b>OR 62 MP 26 to Elk Creek Bridge:</b> Shoulder bike-ped path along OR62 from MP 26 to Elk Creek Bridge	Bike/Ped	2	4	0.7	OR62	New	ODOT	Jackson
5	13	<b>Elk Creek Road to Lower Elk Creek Trailhead:</b> Shoulder bike-ped path along Elk Creek Road to Elk Creek Trailhead	Ped	2	4	3.3	Elk Creek Road	Improve	County	Jackson
5	14	<b>Elk Creek Road to OR 62 MP 25:</b> Separated bike-ped path along OR62 from Elk Creek Road to OR62 MP 25	Bike/Ped	1	4	0.6	OR62	Improve	ODOT	Jackson
5	15	<b>OR 62 MP 25 to Lodge Road:</b> Shoulder bike-ped path along OR62 at MP 25 to Lodge Road	Bike/Ped	2	4	1.9	OR62	Improve	ODOT	Jackson
5	16	<b>Lodge Road to Trail:</b> Shoulder bike-ped path along OR62 from Lodge Road to Trail	Bike/Ped	2	4	0.7	OR62	Improve	ODOT	Jackson
5	17	<b>Trail to Shady Cove Bridge:</b> Shoulder bike-ped path from Trail to Shady Cove Bridge along OR 62 (mostly exists already)	Bike/Ped	2	4	2.4	OR62	Improve	ODOT	Jackson
5	18	<b>OR 62 MP 26 to Old Ferry Road:</b> Separated bike-ped path from proposed bike-ped bridge from OR62 MP 26 to Old Ferry Road	Bike/Ped	1	4	5.8	Old Ferry Road	Improve	County	Jackson
5	19	<b>Old Ferry Road to OR 62:</b> Shoulder bike-ped path on Old Ferry Road to connection with OR 62 south of Shady Cove Bridge	Bike/Ped	2	4	1.4	Old Ferry Road	Improve	County	Jackson
5	20	<b>Shady Cove Bridge to OR 234 Interchange:</b> Shoulder bike-ped path from Shady Cove Bridge to OR234 interchange	Bike/Ped	2	4	6.3	OR62	New	ODOT	Jackson

Table 11. Summary of Bridge and Site Needs.

Segment	Need ID	Description	Type	Length (mi)	Facility	Status	Owner	County
5	20	<b>Bicycle-Pedestrian safety improvements on bridge:</b> Bicycle-Pedestrian safety improvements on Dodge bridge	Bridge		OR234	Improved	ODOT	Jackson
5	21	<b>Trailhead:</b> Trailhead and facilities improvements at Upper Table Rock	Recreation		OR234	Improved	BLM	Jackson
5	22	<b>Trailhead:</b> Trailhead and facilities improvements at Lower Table Rock	Recreation		OR234	Improved	BLM	Jackson
5	23	<b>Boat Launch:</b> Boat Launch at or near Tou Velle State Park (may already exist)	Recreation		OR234	New	OPRD	Jackson
5	24	<b>Bicycle-Pedestrian safety improvements on bridge:</b> Bicycle-Pedestrian safety improvements on Table Rock Road bridge at Tou Velle State Park	Bridge		OR234	Improved	ODOT	Jackson

5	25	<b>Access:</b> Access improvements to Gold Nugget Waysides	Recreation	OR234	Improved	ODOT	Jackson
5	26	<b>Gateway:</b> Gateway to Scenic Byway at or near Ti'lomikh Falls	Recreation	OR234	New	ODOT	Jackson
5	27	<b>Electric Vehicle Charging Station(s):</b> Electric Vehicle Charging Station(s) at or near Gold Hill City Hall	EV	OR234	New	City	Jackson





## Identified Needs (Lost Creek Reservoir)

Esri, TomTom, Garmin, FAO, NOAA, USGS, EPA, USFWS, Earthstar Geographics, County of Jackson, OR, Oregon State Parks, State of Oregon GEO, Esri, TomTom, Garmin, SafeGraph, GeoTechnologies, Inc, METI/NASA, USGS, Bureau of Land Management, EPA, NPS, USDA, USFWS, Esri, USGS

2024

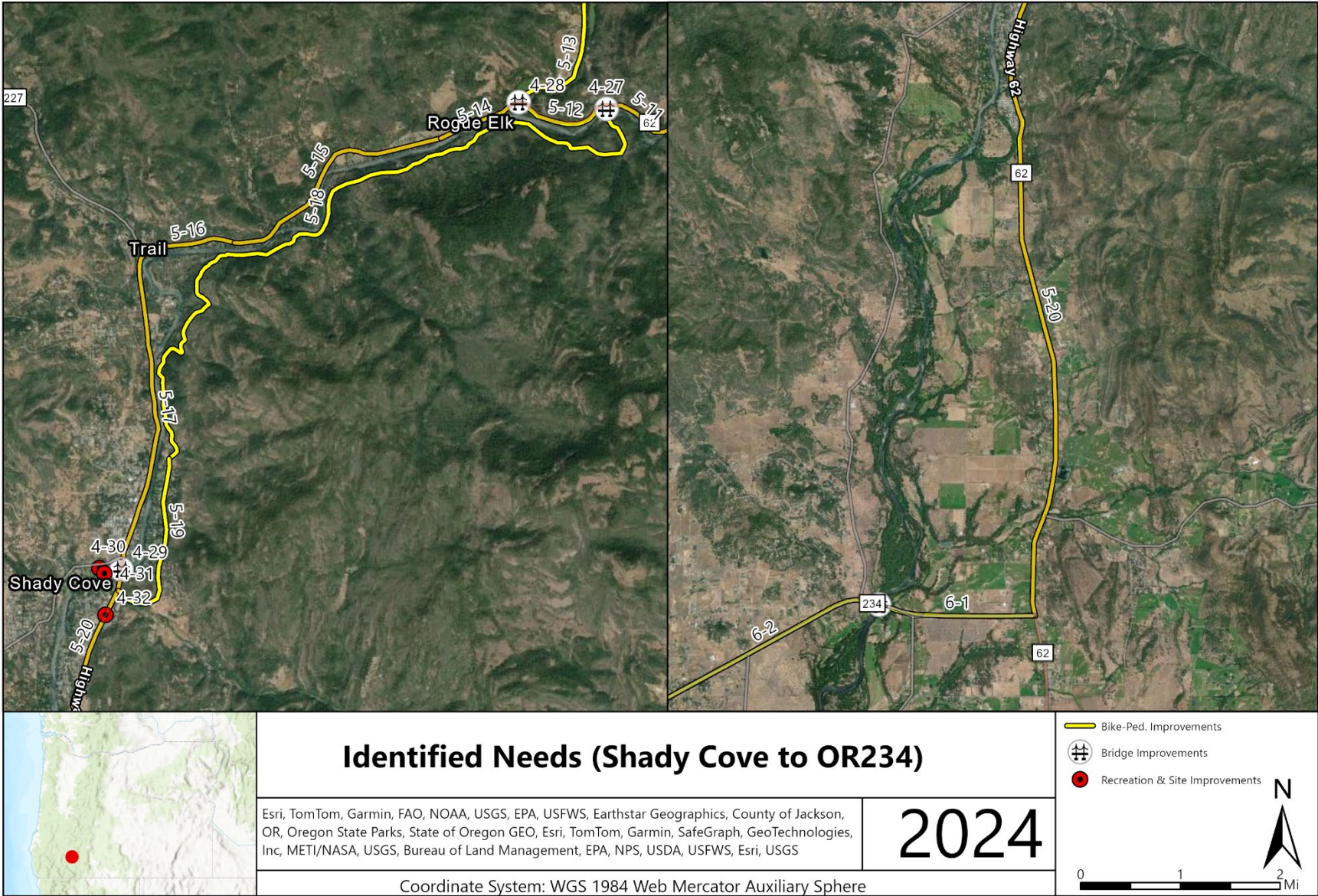
Coordinate System: WGS 1984 Web Mercator Auxiliary Sphere

- Bike-Ped. Improvements
- Bridge Improvements
- Recreation & Site Improvements

N

0 1.5 3 Mi





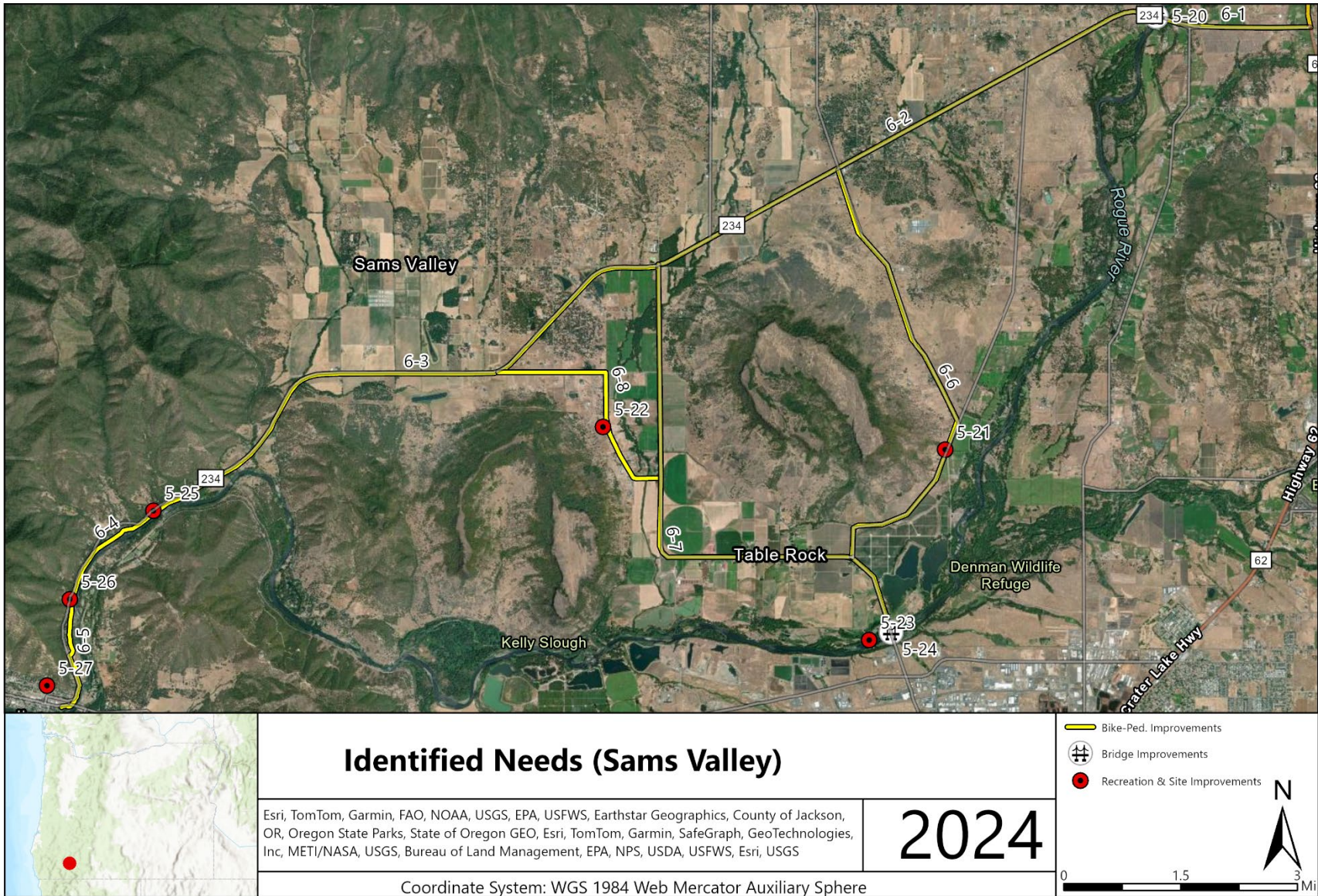


## Segment 6 – Sams Valley

Segment 6 (Sams Valley) OR 234 from the northern connection to OR 62 to Gold Hill. This segment includes Jackson County, ODOT, BLM Medford as land managers and transportation facility owners. Other interested public agencies include the Cow Creek Band of the Umpqua Tribe of Indians and Oregon Parks and OPRD.

Table 12. Summary of Segment 6 Bicycle/Pedestrian Needs

Segment	Need ID	Name and Description	Type	Tier	USFS Standard	Length (mi)	Facility	Status	Owner	County
6	1	<b>OR 62/234 Interchange to Dodge Bridge:</b> Shoulder bike-ped path from OR62/234 interchange along OR234 to Dodge Bridge	Bike/Ped	2	4	1.4	OR62	Improve	ODOT	Jackson
6	2	<b>Dodge Bridge to Table Rock Road:</b> Shoulder bike-ped path from OR62/234 interchange along OR234 from Dodge Bridge to Table Rock Road	Bike/Ped	2	4	5.3	OR234	Improve	ODOT	Jackson
6	3	<b>Table Rock Road to Upper Gold Nugget:</b> Separated bike-ped path along OR62 from Table Rock Road to Upper Gold Nugget Wayside	Bike/Ped	1	4	5.4	OR234	New	ODOT	Jackson
6	4	<b>Upper Gold Nugget to Ti'lomikh Falls:</b> Separated bike-ped path through Upper Gold Nugget Wayside along river to Ti'lomikh Falls	Bike/Ped	1	4	1.6	OR234	New	BLM; ODOT	Jackson
6	5	<b>Ti'lomikh Falls to City Beach Park:</b> Separated bike-ped path through Ti'lomikh Falls to City Beach Park (already exists)	Bike/Ped	1	4	1.1	OR234	Existing	Gold Hill	Jackson
6	6	<b>Antioch Road to Table Rock Road:</b> Shoulder bike path on Antioch Road from OR62 to Table Rock Road	Bike/Ped	2	4	4.5	Antioch Road	Improve	County	Jackson
6	7	<b>Table Rock Road from OR 62 to Table Rock Bridge:</b> Shoulder bike path on Table Rock Road from OR62 to Table Rock Bridge	Bike/Ped	2	4	5.3	Table Rock Road	Improve	County	Jackson
6	8	<b>Tresham Lane to Wheeler Road:</b> Shoulder bike path on Tresham Lane and Wheeler Road	Bike/Ped	2	4	2.3	Tresham Lane; Wheeler Road	Improve	County	Jackson





## Screening Needs

The project needs identified in the previous sections inform the design and cost estimating work that follows this memo. In order to focus the project team's resources, we have organized the needs listed by anticipated effort to complete and impact to the plan's final recommendations.

### Categorization Method

The project team uses a 2x2 matrix to organize identified needs by effort and impact. Effort refers to the amount of time and resources needed to accomplish the design and cost estimating task for the specific need. Impact refers to the anticipated benefit to the overall project goals and outcomes. Figure 10 below illustrates the matrix and the four organizing categories of "Major Projects", "Quick Wins", "As Time Allows", and "Back Burner". The team expects to develop a small number of high effort, high impact "**Major Projects**" unique to certain sites or structures that include a conceptual design, cost estimate for preliminary design, cost estimate for construction, and other engineering assumptions. The project team expects to develop many low effort, high impact "**Quick Wins**" through the use of standard drawings that apply to multiple needs, plus applicable cost estimates and assumptions. Low effort, low impact needs are those likely including project description and costs and should be further scoped "**As Time Allows**". High effort, low impact are those needs the project team sees as either outside the project scope or not rising to the level of impact to fall in another category and thus fall to the "**Back Burner**".

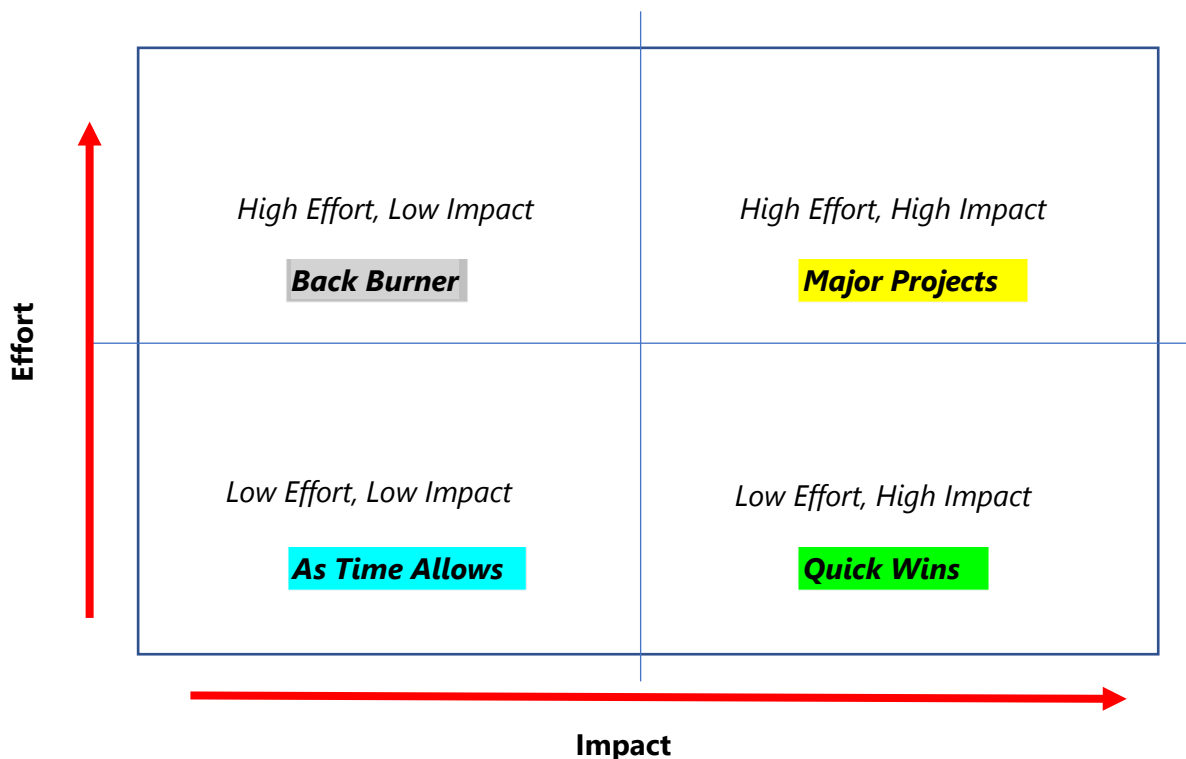


Figure 10. Illustration of Screening Matrix.

## Effort and Impact Assumptions

The project team made the following assumptions during the needs screening and categorization task:

- Any bicycle and/or pedestrian need that addresses an immediate safety risk is **high impact**. It is important to prioritize safety countermeasures in areas where users must travel on the roadway.
- Needs that exist near larger population centers and high-use recreation sites are also assumed to be **high impact**.
- Upgrades to existing infrastructure (e.g., adding signage or re-striping) are considered **low effort**, while construction of new infrastructure (e.g., a new pedestrian underpass) is considered **high effort**.
- Some proposed improvements are complex and would require unique engineering solutions. Others are located in popular destinations that would cause traffic disruptions. These needs are also considered **high effort**.

## Major Projects

The team expects to develop a small number of high effort, high impact “**Major Projects**” unique to certain sites or structures that include a conceptual design, cost estimate for preliminary design, cost estimate for construction, and other engineering assumptions.

These project needs include the design and construction of new transportation infrastructure, including:

- Trail segments to close network gaps
- Separated bicycle and pedestrian paths
- Bicycle-pedestrian bridges
- Highway underpasses
- Highway crossings at high-use and high vehicular traffic areas

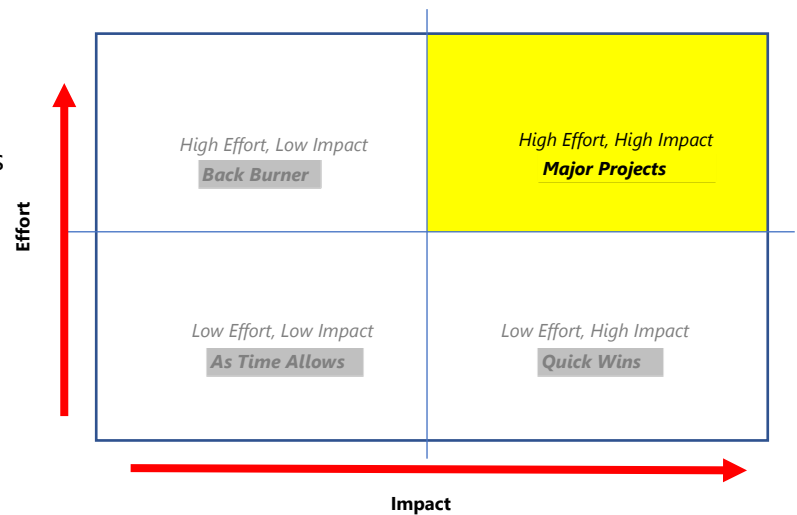


Table 13 and Table 14 summarize the “Major Project” needs.



Table 13. Summary of “Major Project” Bicycle and Pedestrian Needs

Segment	Need ID	Name and Description	Type	Tier	USFS Standard	Facility	Status	Owner	County
1	7	<b>Narrows to Swiftwater Trail:</b> New trail from proposed Narrows wayside bridge to Swiftwater trail	Bike/Ped	1	4	BLM Trails	New	BLM	Douglas
1	8	<b>Swiftwater Trail to Trailhead:</b> Improved trail from top of hill down to trailhead	Bike/Ped	1	4	BLM Trails	Improve	BLM	Douglas
1	9	<b>Swiftwater Trailhead to Bob Creek:</b> Separated bike-ped path on NUT	Bike/Ped	1	4	NUT	Improve	BLM	Douglas
1	10	<b>Bob Creek to Tioga Bridge:</b> Separated bike-ped path on NUT	Bike/Ped	1	4	NUT	Existing	BLM	Douglas
2	0	<b>Fall Creek Falls Trail:</b> Separated bike-ped path on NUT	Ped	1	4	Fall Creek Falls	Improve	USFS	Douglas
2	1	<b>Fall Creek Falls to Williams Creek:</b> Separated bike-ped path on NUT	Bike/Ped	1	4	NUT	Improve	USFS	Douglas
2	2	<b>Williams Creek to Canton Creek Campground:</b> Separated bike-ped path on NUT	Bike/Ped	1	4	NUT	Improve	USFS	Douglas
2	4	<b>Mott Bridge to Panther Creek Bridge:</b> Separated bike-ped path on NUT	Bike/Ped	1	4	NUT	Improve	USFS	Douglas
2	5	<b>Panther Creek Bridge to Calf Creek Trailhead:</b> Separated bike-ped path on NUT	Bike/Ped	1	4	NUT	Improve	USFS	Douglas
2	7	<b>NF-4750 to Happy Creek Lane:</b> Separated bike-ped path between OR138 and river from NF-4750 to Happy Creek Lane (may require highway crossing or undercrossing)	Bike/Ped	1	4	OR138	New	ODOT	Douglas
2	8	<b>NF-4750 to Marsters Trailhead:</b> Separated bike-ped path on NUT	Bike/Ped	1	4	NUT	Improve	USFS	Douglas
2	10	<b>Marsters Bridge to Soda Springs Trailhead:</b> Separated bike-ped path on NUT	Bike/Ped	1	4	NUT	Improve	USFS	Douglas
2	11	<b>Soda Springs Trailhead to Tokatee Campground:</b> Separated bike-ped path on NUT	Bike/Ped	1	4	NUT	Improve	USFS	Douglas
2	13	<b>NF-4776 Clearwater to Stump Lake:</b> Separated bike-ped path between NF-4776 to Stump Lake	Bike/Ped	1	4	NUT	Improve	USFS	Douglas
2	14	<b>Stump Lake to Clearwater Falls:</b> Separated bike-ped path between Stump Lake and Clearwater Falls along OR138	Bike/Ped	1	4	OR138	Improve	USFS	Douglas
3	1	<b>Clearwater Falls to NF-430:</b> Separated bike-ped path between Clearwater Falls and NF-430 along OR138	Bike/Ped	1	4	OR138	New	ODOT	Douglas
3	4	<b>NF-4792 (Sheep Creek) from OR 130 to Diamond Lake Resort:</b> Shared Roadway on NF-4792 (Sheep Creek) from OR138 to Diamond Lake Resort	Bike/Ped	3	4	NF-4792	Improve	USFS	Douglas

Segment	Need ID	Name and Description	Type	Tier	USFS Standard	Facility	Status	Owner	County
3	5	<b>NF-480 to Diamond Lake Horse Crossing Culvert:</b> Separated bike-ped path from NF-480 to Diamond Lake Horse Crossing culvert on east side of highway	Bike/Ped	1	4	OR138	New	ODOT	Douglas
3	6	<b>NF-4792 to NF-050:</b> Separated bike-ped path from NF-4792 to NF-050 along OR138 on west side of highway	Bike/Ped	1	4	OR138	New	ODOT	Douglas
3	7	<b>NF-050 to OR 230 Interchange:</b> Separated bike-ped path along OR138 from NF-050 to OR230 interchange on west side of highway	Bike/Ped	1	4	OR138	New	ODOT	Douglas
3	8	<b>OR 230/138 Interchange to Claude Lewis Sno-Park:</b> Separated bike-ped path along OR230 from interchange with OR138 to Claude Lewis Sno park on north side of highway	Bike/Ped	1	4	OR230	New	ODOT	Douglas
3	11	<b>Claude Lewis Sno-Park to OR 62 MP 8:</b> Separated bike-ped path along OR230 from Claude Lewis Sno-Park or OR62 at MP 6	Bike/Ped	1	4	OR62	New	ODOT	Douglas
3	12	<b>OR 62 MP 8 to NF-6530:</b> Separated bike-ped path along OR 62 MP 8 to NF-6530	Bike/Ped	1	4	OR62	New	ODOT	Douglas
4	1	<b>Rogue River Trail to NF-6530:</b> Separated bike-ped path on RRT to NF-6530	Bike/Ped	1	4	OR230	New	ODOT	Jackson
4	2	<b>Rogue River Trail at OR230 to Natural Bridge:</b> Separated bike-ped path on RRT at OR230 to Natural Bridge	Bike/Ped	1	4	RRT	Improve	USFS	Jackson
4	3	<b>Rogue River Trail at OR230 to Bridge at MP 5.25:</b> Separated bike-ped path on RRT at OR230 to bridge at MP 5.25	Bike/Ped	1	4	OR230	Improve	ODOT	Jackson
4	4	<b>OR 230 from MP 5.25 to MP 2:</b> Separated bike-ped path along OE 230 from MP 5.25 to MP 2	Bike/Ped	1	4	OR230	New	ODOT	Jackson
4	6	<b>OR62/230 Interchange to MP 66:</b> Separated bike-ped path along south side of OR62 from interchange with OR230 to MP 66	Bike/Ped	1	4	OR62	New	ODOT	Jackson
4	7	<b>OR 62 from MP 57 to High Cascades Ranger Station:</b> Separated bike-ped path along west side of OR62 from OR 230 interchange to High Cascades Ranger Station	Bike/Ped	1	4	OR62	New	ODOT	Jackson
4	8	<b>Rogue Gorge Trail from Farewell Bend to Discovery OHV:</b> Separated bike-ped path on Rogue Gorge Trail from Farewell Bend Campground to Discovery OHV	Bike/Ped	1	4	Rogue Gorge Trail	Improve	USFS	Jackson



Segment	Need ID	Name and Description	Type	Tier	USFS Standard	Facility	Status	Owner	County
4	10	<b>Rogue Gorge Trail from River Bridge Campground to High Cascades Ranger Station:</b> Separated bike-ped path on Rogue Gorge Trail from River Bridge Campground to High Cascades Ranger Station	Bike/Ped	1	4	Rogue Gorge Trail	Improve	USFS	Jackson
5	1	<b>High Cascades Ranger Station to Peyton Bridge:</b> Separated bike-ped path from High Cascades Ranger Station to Peyton Bridge along OR62	Bike/Ped	1/3	4	OR62	New	ODOT	Jackson
5	2	<b>Peyton Bridge to Mill Creek Drive:</b> Separated bike-ped path from Peyton Bridge to Mill Creek Drive on Rogue Gorge Trail	Bike/Ped	1	4	Rogue Gorge Trail	New	USACE	Jackson
5	5	<b>Peyton Bridge to Joseph Stewart State Park Road:</b> Separated bike-ped path along north side of OR62 from Peyton Bridge to Joseph Stewart State Park Road	Bike/Ped	1	4	OR62	New	USACE	Jackson
5	6	<b>Peyton Bridge to South Shore Trail:</b> Separated bike-ped path on South Shore Trail from Peyton Bridge to South Shore Trail	Bike/Ped	1	4	South Shore Trail	Improve	USACE	Jackson
5	7	<b>South Shore Trail to McLeod:</b> Separated bike-ped path on South Shore Trail to McLeod	Bike/Ped	1	4	South Shore Trail	Improve	USACE	Jackson
5	8	<b>McLeod Bridge to Fishing Access Road:</b> Separated bike-ped path from McLeod Bridge to Fishing Access Road	Bike/Ped	1	4	McGregor Park Trail	Existing	USACE	Jackson
5	10	<b>McLeod Bridge through Casey State Park:</b> Separated bike-ped path through Casey State Park	Bike/Ped	1	4	OR62	New	OPRD	Jackson
5	20	<b>Shady Cove Bridge to OR 234 Interchange:</b> Shoulder bike-ped path from Shady Cove Bridge to OR234 interchange	Bike/Ped	2	4	OR62	New	ODOT	Jackson
6	1	<b>OR 62/234 Interchange to Dodge Bridge:</b> Shoulder bike-ped path from OR62/234 interchange along OR234 to Dodge Bridge	Bike/Ped	2	4	OR62	Improve	ODOT	Jackson
6	2	<b>Dodge Bridge to Table Rock Road:</b> Shoulder bike-ped path from OR62/234 interchange along OR234 from Dodge Bridge to Table Rock Road	Bike/Ped	2	4	OR62	Improve	ODOT	Jackson
6	3	<b>Table Rock Road to Upper Gold Nugget:</b> Separated bike-ped path along OR62 from Table Rock Road to Upper Gold Nugget Wayside	Bike/Ped	1	4	OR62	New	ODOT	Jackson
6	4	<b>Upper Gold Nugget to Ti'lomikh Falls:</b> Separated bike-ped path through Upper Gold Nugget Wayside along river to Ti-lomikh Falls	Bike/Ped	1	4	OR62	New	BLM; ODOT	Jackson

Table 14. Summary of “Major Project” Bridge and Site Needs

Segment	Need ID	Description	Type	Facility	Status	Owner	County
5	20	<b>Bicycle-Pedestrian safety improvements on bridge:</b> Bicycle-Pedestrian safety improvements on Dodge bridge	Bridge	OR234	Improved	ODOT	Jackson
5	21	<b>Trailhead:</b> Trailhead and facilities improvements at Upper Table Rock	Recreation	OR234	Improved	BLM	Jackson
5	22	<b>Trailhead:</b> Trailhead and facilities improvements at Lower Table Rock	Recreation	OR234	Improved	BLM	Jackson
5	23	<b>Boat Launch:</b> Boat Launch at or near Tou Velle State Park (may already exist)	Recreation	OR234	New	OPRD	Jackson
5	24	<b>Bicycle-Pedestrian safety improvements on bridge:</b> Bicycle-Pedestrian safety improvements on Table Rock Road bridge at Tou Velle State Park	Bridge	OR234	Improved	ODOT	Jackson
5	25	<b>Access:</b> Access improvements to Gold Nugget Waysides	Recreation	OR234	Improved	ODOT	Jackson
5	26	<b>Gateway:</b> Gateway to Scenic Byway at or near Ti'lomikh Falls	Recreation	OR234	New	ODOT	Jackson
5	27	<b>Electric Vehicle Charging Station(s):</b> Electric Vehicle Charging Station(s) at or near Gold Hill City Hall	EV	OR234	New	City	Jackson



## Quick Wins

The project team expects to develop many low effort, high impact “**Quick Wins**” through the use of standard drawing templates that apply to multiple needs, plus applicable cost estimates and assumptions.

These projects include:

- Shoulder bicycle-pedestrian paths on existing roadways
- Shared roadway segments, with updated signage and pavement markings
- Scenic Byway gateway improvements
- EV charging station installation
- Safety countermeasures like active flashing signage on bridges and other high risk areas

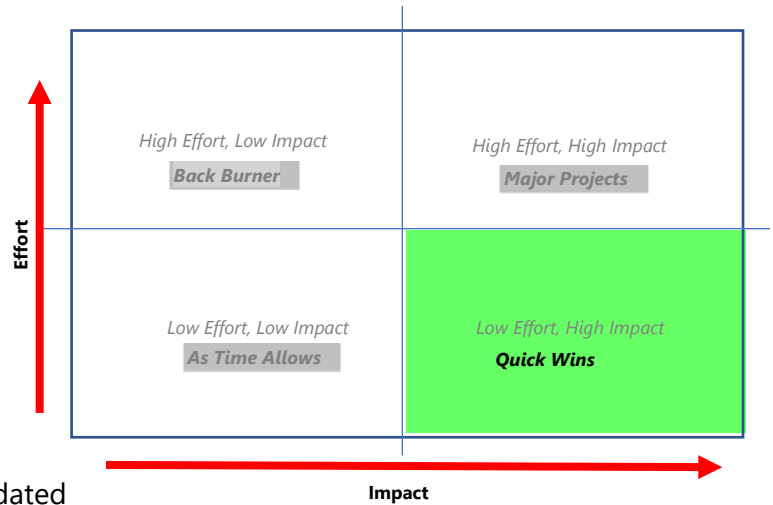


Table 15 and Table 16 summarize the “Quick Wins” needs.

Table 15. Summary of “Quick Win” Bicycle and Pedestrian Needs

Segment	Need ID	Name and Description	Type	Tier	USFS Standard	Facility	Status	Owner	County
1	1	<b>Sunshine to Glide:</b> Separated bike path on north side of road between Sunshine Park and Glide	Bike/Ped	1	4	OR138	New	ODOT	Douglas
1	2	<b>Buckhorn Road to Glide:</b> Shoulder bike path on Buckhorn road between Roseburg and Glide	Bike/Ped	2	4	Buckhorn Road	Improve	Douglas County	Douglas
1	3	<b>North Bank Road to Colliding Rivers:</b> Shoulder bike path on OR138	Bike/Ped	1	4	OR138	New	ODOT	Douglas
1	4	<b>Colliding Rivers to Bobcat Lane:</b> Separated bike path on north and south side (alternating) through Glide	Bike/Ped	1	4	OR138	Existing	ODOT	Douglas
1	5	<b>Bobcat Lane to Lone Rock Bridge:</b> Shoulder bike path on OR138	Bike/Ped	2	4	OR138	Improve	ODOT	Douglas
1	6	<b>Lone Rock Bridge to Narrows Wayside:</b> Shoulder bike path on OR138	Bike/Ped	2	4	OR138	Improve	ODOT	Douglas
1	11	<b>Tioga Bridge to Boundary Road:</b> Shared roadway on OR138	Bike/Ped	3	4	OR138	Improve	BLM	Douglas
1	12	<b>Boundary Road to Fall Creek Falls:</b> Shared roadway on Boundary Road	Bike/Ped	3	4	NUT	Improve	BLM; USFS	Douglas
2	3	<b>Canton Creek Campground to Mott Bridge:</b> Shoulder bike path on OR138	Bike/Ped	2	4	OR138	Improve	ODOT	Douglas
2	6	<b>Calf Creek Trailhead to OR 138:</b> Shared roadway on NF-4750	Bike/Ped	3	4	NF-4750	Improve	USFS	Douglas
2	9	<b>Marsters Trailhead to Marsters Bridge:</b> Shared roadway on NF-4770	Bike/Ped	3	4	NF-4770	Improve	USFS	Douglas
2	12	<b>Tokatee Campground to NF-4776 Clearwater:</b> Shared roadway on NF-4776 (Tokatee Ranger Station Road)	Bike/Ped	3	4	NUT	Existing	USFS	Douglas
3	2	<b>Birds Point Road to Poole Creek Campground:</b> Shared roadway on Birds Point Road from OR138 to Poole Creel Campground	Bike/Ped	3	4	Birds Point Road	Improve	USFS	Douglas
3	3	<b>NF-430 to East Lemolo Campground:</b> Shared Roadway on NF-430 and connecting USFS roads to East Lemolo Campground	Bike/Ped	3	4	NF-430	Improve	USFS	Douglas
3	9	<b>Old Diamond Lake Highway from OR 230 MP 23 to MP 12:</b> Shared roadway on Old Diamond Lake Highway from OR230 at MP 23 to MP 12	Bike/Ped	3	4	Old Diamond Lake Highway	Improve	USFS	Douglas
3	10	<b>NF-2901 at OR 230 MP 12 to NF-6530 at OR 230 MP 6:</b> Shared roadway on NF-2901 NF-2901 at OR 230 MP 12 to NF-6530 at OR 230 MP 6	Bike/Ped	3	4	NF-6530	Improve	USFS	Douglas



Segment	Need ID	Name and Description	Type	Tier	USFS Standard	Facility	Status	Owner	County
4	5	<b>OR 230 from MP 2 to OR 62 Interchange:</b> Shoulder bike path along OR230 from MP 2 to OR 62 interchange	Bike/Ped	2	4	OR230	Improve	ODOT	Jackson
4	9	<b>Discovery OHV from Rogue Gorge Trail to High Cascades Ranger Station:</b> Shared roadway on Discovery OHV to High Cascades Ranger Station	Bike/Ped	3	4	Discovery OHV	Improve	USFS	Jackson
5	11	<b>McLeod Bridge to OR 62 MP 26:</b> Shoulder bike-ped path along OR62 from McLeod Bridge to OR 62 MP 26	Bike/Ped	2	4	OR62	Improve	ODOT	Jackson
5	14	<b>Elk Creek Road to OR 62 MP 25:</b> Separated bike-ped path along OR62 from Elk Creek Road to OR62 MP 25	Bike/Ped	1	4	OR62	Improve	ODOT	Jackson
5	15	<b>OR 62 MP 25 to Lodge Road:</b> Shoulder bike-ped path along OR62 at MP 25 to Lodge Road	Bike/Ped	2	4	OR62	Improve	ODOT	Jackson
5	16	<b>Lodge Road to Trail:</b> Shoulder bike-ped path along OR62 from Lodge Road to Trail	Bike/Ped	2	4	OR62	Improve	ODOT	Jackson
5	17	<b>Trail to Shady Cove Bridge:</b> Shoulder bike-ped path from Trail to Shady Cove Bridge along OR 62 (mostly exists already)	Bike/Ped	2	4	OR62	Improve	ODOT	Jackson
6	5	<b>Ti'lomikh Falls to City Beach Park:</b> Separated bike-ped path through Ti'lomikh Falls to City Beach Park (already exists)	Bike/Ped	1	4	OR62	Existing	Gold Hill	Jackson
6	6	<b>Antioch Road to Table Rock Road:</b> Shoulder bike path on Antioch Road from OR62 to Table Rock Road	Bike/Ped	2	4	Antioch Road	Improve	County	Jackson
6	7	<b>Table Rock Road from OR 62 to Table Rock Bridge:</b> Shoulder bike path on Table Rock Road from OR62 to Table Rock Bridge	Bike/Ped	2	4	Table Rock Road	Improve	County	Jackson
6	8	<b>Tresham Lane to Wheeler Road:</b> Shoulder bike path on Tresham Lane and Wheeler Road	Bike/Ped	2	4	Tresham Lane; Wheeler Road	Improve	County	Jackson

Table 16. Summary of “Quick Win” Bridge and Site Needs

Segment	Need ID	Description	Type	Facility	Status	Owner	County
1	20	Gateway to Scenic Byway at or near Sunshine Park	Recreation	OR138	New	ODOT	Douglas
1	22	Bicycle-Pedestrian safety improvements on bridge at Colliding Rivers	Bridge	OR138	Improved	ODOT	Douglas
1	23	Gateway to Scenic Byway at or near USFS North Umpqua Ranger District office	Recreation	OR138	New	USFS/ City	Douglas
1	24	Bicycle-Pedestrian Highway Crossing to connect Glide separated bike path across OR 138	Crossing	OR138	New	ODOT	Douglas
1	25	Bicycle-Pedestrian Highway Crossing to connect Glide separated bike path across OR 138	Crossing	OR138	New	ODOT	Douglas
1	28	Bicycle-Pedestrian safety improvements on Tioga bridge as needed	Bridge	OR 138	Improved	BLM	Douglas
2	20	Bicycle-Pedestrian safety improvements on bridge at Horsehoe Bend and Raft Site	Bridge	OR 138	Improved	ODOT	Douglas
2	21	Electric Vehicle Charging Station(s) at or near Umpqua's Last Resort	EV	OR138	New	USFS	Douglas
2	22	Bicycle-Pedestrian safety improvements on Marsters bridge	Bridge	OR 138	Improved	ODOT	Douglas
2	23	Bicycle-Pedestrian safety improvements on bridge at Stump Lake	Bridge	OR138	Improved	ODOT	Douglas
2	25	Electric Vehicle Charging Station(s) at or near Diamond Lake Resort gas station	EV	OR138	New	USFS	Douglas
2	27	Upgrade to existing interpretive signs at Thielsen/Mt. Bailey Viewpoint	Interpretive	OR230	Improved	USFS	Douglas
3	23	Bicycle-Pedestrian Highway Crossing at OR230 and OR62 interchange	Crossing	OR62	New	ODOT	Douglas
3	25	Electric Vehicle Charging Station(s) at or near Union Creek Campground	EV	OR62	New	USFS	Douglas
3	29	Electric Vehicle Charging Station(s) at or near Prospect Public Library	EV	OR62	New	City	Douglas
4	20	Bicycle-Pedestrian safety improvements on Peyton bridge	Bridge	OR62	Improved	ODOT	Jackson
4	23	Electric Vehicle Charging Station(s) at or near Lost Creek Marina	EV	OR62	New	County	Jackson
4	26	Bicycle-Pedestrian safety improvements on McLeod bridge	Bridge	OR62	Improved	ODOT	Jackson
4	28	Bicycle-Pedestrian safety improvements on Elk Creek bridge	Bridge	OR62	Improved	ODOT	Jackson
4	29	Bicycle-Pedestrian safety improvements on Shady Cove bridge	Bridge	OR62	Improved	ODOT	Jackson
4	30	EV Charging Station(s) at or near Upper Rogue Regional County Park	EV	OR62	New	County	Jackson
5	20	Bicycle-Pedestrian safety improvements on Dodge bridge	Bridge	OR234	Improved	ODOT	Jackson
5	23	Boat Launch at or near Tou Velle State Park (may already exist)	Recreation	OR234	New	OPRD	Jackson
5	24	Safety improvements on Table Rock Road bridge at Tou Velle State Park	Bridge	OR234	Improved	ODOT	Jackson
5	25	Access improvements to Gold Nugget Waysides	Recreation	OR234	Improved	ODOT	Jackson
5	27	Electric Vehicle Charging Station(s) at or near Gold Hill City Hall	EV	OR234	New	City	Jackson



### As Time Allows

Low effort, low impact needs were identified and project descriptions and costs should be further scoped “As Time Allows”. While the amount of time and resources needed to accomplish the design and cost estimation is low, the impact of the need as it relates to the overall project goals is also low.

Most of these needs fall under the recreation category and include the following projects:

- Sno-park upgrades
- Campground expansions
- Trailhead improvements
- Boat launch improvements

Transportation-specific needs that should be advanced “As Time Allows” are often located farther away from the highway and/or connect to lower use recreation sites. Table 17 and Table 18 summarize the “As Time Allows” needs.



Table 17. Summary of “As Time Allows” Bicycle and Pedestrian Needs

Segment	Need ID	Name and Description	Type	Tier	USFS Standard	Facility	Status	Owner	County
5	3	<b>North Shore Trail to Takelma Day Use:</b> Separated bike-ped path on North Shore Trail to Takelma Day Use	Bike/Ped	1/3	4	North Shore Trail	Improve	USACE	Jackson
5	4	<b>Lost Creek Trailhead to Elk Creek Trail:</b> Pedestrian trail from Lost Creek Trailhead to Elk Creek Trail (also identified in site-specific needs list)	Bike/Ped	1	4	New	New	USACE	Jackson
5	9	<b>Fishing Access Road to Takelma Day Use:</b> Separated bike-ped path from Fishing Access Road to Takelma Day Use	Bike/Ped	1	4	New	New	USACE	Jackson
5	12	<b>OR 62 MP 26 to Elk Creek Bridge:</b> Shoulder bike-ped path along OR62 from MP 26 to Elk Creek Bridge	Bike/Ped	2	4	OR62	New	ODOT	Jackson
5	13	<b>Elk Creek Road to Lower Elk Creek Trailhead:</b> Shoulder bike-ped path along Elk Creek Road to Elk Creek Trailhead	Ped	2	4	Elk Creek Road	Improve	County	Jackson
5	18	<b>OR 62 MP 26 to Old Ferry Road:</b> Separated bike-ped path from proposed bike-ped bridge from OR62 MP 26 to Old Ferry Road	Bike/Ped	1	4	Old Ferry Road	Improve	County	Jackson
5	19	<b>Old Ferry Road to OR 62:</b> Shoulder bike-ped path on Old Ferry Road to connection with OR 62 south of Shady Cove Bridge	Bike/Ped	2	4	Old Ferry Road	Improve	County	Jackson

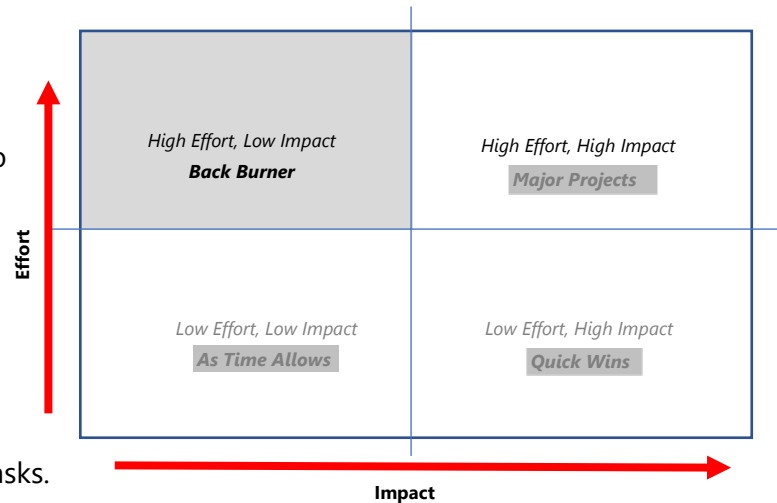
Table 18. Summary of “As Time Allows” Bridge and Site Needs

Segment	Need ID	Description	Type	Facility	Status	Owner	County
2	28	Upgrade existing Sno-Park facility to accommodate all recreation users and bathroom facilities	Sno-Park	Improved	Improved	USFS	Douglas
4	22	Expand campground to add yurts	Recreation	New	New	USFS	Jackson
4	31	Boat Launch at or near Upper Rogue Regional County Park	Recreation	New	New	County	Jackson
5	21	Trailhead and facilities improvements at Upper Table Rock	Recreation	Improved	Improved	BLM	Jackson
5	22	Trailhead and facilities improvements at Lower Table Rock	Recreation	Improved	Improved	BLM	Jackson

## Back Burner

High effort, low impact are those needs the project team perceives to be either outside the project scope or not rising to the level of impact to fall in another category and thus is documented as “**Back Burner**” activities.

No “Back Burner” needs were identified during the existing conditions assessment, demand management analysis, and stakeholder engagement tasks.



## Conclusion and Next Steps

The needs identification process resulted in a comprehensive list of potential transportation and recreation improvements along the study area corridor. The project team roughly categorized the universe of need based on expected effort and impact and will use this initial screening to begin developing conceptual designs and cost estimates for a selected number of potential projects.

Next steps include:

- 1. Needs Refinement:** Using the results of the initial needs screening, the project team will further refine the list to focus on the top 25% of needs as part of the upcoming conceptual design and cost estimation task.
- 2. Conceptual Design and Cost Estimation:** Conceptual designs and cost estimates will be prepared by the project team to translate the identified need into a tangible project. It is anticipated that project-specific planning-level designs, preliminary engineering and construction cost estimates will be developed for a small group of high priority “Major Projects”. The project team is also preparing standard design templates that will apply to many of the “Quick Win” needs, where the proposed improvement is less complex and can be replicated in certain environments (e.g., a template that applies to a Tier 2 buffered shoulder bike/pedestrian path).
- 3. Stakeholder and Public Engagement:** The project team will offer additional opportunities for engagement with stakeholders and community members to validate the needs list and gather additional insights on conceptual designs.



## Attachment 1 – Complete List of Bicycle and Pedestrian Needs

Segment	Need ID	Name and Description	Type	Tier	USFS Standard	Length (mi)	Facility	Status	Owner	County
1	1	<b>Sunshine to Glide:</b> Separated bike path on north side of road between Sunshine Park and Glide	Bicycle-Pedestrian	1	4	11.4	OR138	New	ODOT	Douglas
1	2	<b>Buckhorn Road to Glide:</b> Shoulder bike path on Buckhorn Road between Roseburg and Glide	Bicycle-Pedestrian	2	4	14.3	Buckhorn Road	Improve	Douglas County	Douglas
1	3	<b>North Bank Road to Colliding Rivers:</b> Shoulder bike path on OR138	Bicycle-Pedestrian	1	4	1.4	OR138	New	ODOT	Douglas
1	4	<b>Colliding Rivers to Bobcat Lane:</b> Separated bike path on north and south side (alternating) through Glide	Bicycle-Pedestrian	1	4	0.9	OR138	Existing	ODOT	Douglas
1	5	<b>Bobcat Lane to Lone Rock Bridge:</b> Shoulder bike path on OR138	Bicycle-Pedestrian	2	4	0.7	OR138	Improve	ODOT	Douglas
1	6	<b>Lone Rock Bridge to Narrows Wayside:</b> Shoulder bike path on OR138	Bicycle-Pedestrian	2	4	3.3	OR138	Improve	ODOT	Douglas
1	7	<b>Narrows to Swiftwater Trail:</b> New trail from proposed Narrows wayside bridge to Swiftwater trail	Bicycle-Pedestrian	1	4	0.7	BLM Trails	New	BLM	Douglas
1	8	<b>Swiftwater Trail to Trailhead:</b> Improved trail from top of hill down to trailhead	Bicycle-Pedestrian	1	4	0.9	BLM Trails	Improve	BLM	Douglas
1	9	<b>Swiftwater Trailhead to Bob Creek:</b> Separated bike-ped path on NUT	Bicycle-Pedestrian	1	4	5.7	NUT	Improve	BLM	Douglas
1	10	<b>Bob Creek to Tioga Bridge:</b> Separated bike-ped path on NUT	Bicycle-Pedestrian	1	4	1.6	NUT	Existing	BLM	Douglas
1	11	<b>Tioga Bridge to Boundary Road:</b> Shared roadway on OR138	Bicycle-Pedestrian	3	4	1.0	OR138	Improve	BLM	Douglas
1	12	<b>Boundary Road to Fall Creek Falls:</b> Shared roadway on Boundary Road	Bicycle-Pedestrian	3	4	11.4	NUT	Improve	BLM; USFS	Douglas
2	0	<b>Fall Creek Falls Trail:</b> Separated bike-ped path on NUT	Pedestrian	1	4	0.5	Fall Creek Falls	Improve	USFS	Douglas

2	1	<b>Fall Creek Falls to Williams Creek:</b> Separated bike-ped path on NUT	Bicycle-Pedestrian	1	4	5.5	NUT	Improve	USFS	Douglas
2	2	<b>Williams Creek to Canton Creek Campground:</b> Separated bike-ped path on NUT	Bicycle-Pedestrian	1	4	2.3	NUT	Improve	USFS	Douglas
2	3	<b>Canton Creek Campground to Mott Bridge:</b> Shoulder bike path on OR138	Bicycle-Pedestrian	2	4	0.3	OR138	Improve	ODOT	Douglas
2	4	<b>Mott Bridge to Panther Creek Bridge:</b> Separated bike-ped path on NUT	Bicycle-Pedestrian	1	4	4.6	NUT	Improve	USFS	Douglas
2	5	<b>Panther Creek Bridge to Calf Creek Trailhead:</b> Separated bike-ped path on NUT	Bicycle-Pedestrian	1	4	3.8	NUT	Improve	USFS	Douglas
2	6	<b>Calf Creek Trailhead to OR 138:</b> Shared roadway on NF-4750	Bicycle-Pedestrian	3	4	0.5	NF-4750	Improve	USFS	Douglas
2	7	<b>NF-4750 to Happy Creek Lane:</b> Separated bike-ped path between OR138 and river from NF-4750 to Happy Creek Lane (may require highway crossing or undercrossing)	Bicycle-Pedestrian	1	4	0.6	OR138	New	ODOT	Douglas
2	8	<b>NF-4750 to Marsters Trailhead:</b> Separated bike-ped path on NUT	Bicycle-Pedestrian	1	4	3.5	NUT	Improve	USFS	Douglas
2	9	<b>Marsters Trailhead to Marsters Bridge:</b> Shared roadway on NF-4770	Bicycle-Pedestrian	3	4	0.4	NF-4770	Improve	USFS	Douglas
2	10	<b>Marsters Bridge to Soda Springs Trailhead:</b> Separated bike-ped path on NUT	Bicycle-Pedestrian	1	4	4.7	NUT	Improve	USFS	Douglas
2	11	<b>Soda Springs Trailhead to Tokatee Campground:</b> Separated bike-ped path on NUT	Bicycle-Pedestrian	1	4	8.4	NUT	Improve	USFS	Douglas
2	12	<b>Tokatee Campground to NF-4776 Clearwater:</b> Shared roadway on NF-4776 (Tokatee Ranger Station Road)	Bicycle-Pedestrian	3	4	2.3	NUT	Existing	USFS	Douglas
2	13	<b>NF-4776 Clearwater to Stump Lake:</b> Separated bike-ped path between NF-4776 to Stump Lake	Bicycle-Pedestrian	1	4	6.6	NUT	Improve	USFS	Douglas
2	14	<b>Stump Lake to Clearwater Falls:</b> Separated bike-ped path between	Bicycle-Pedestrian	1	4	2.5	OR138	Improve	USFS	Douglas

		Stump Lake and Clearwater Falls along OR138								
3	1	<b>Clearwater Falls to NF-430:</b> Separated bike-ped path between Clearwater Falls and NF-430 along OR138	Bicycle-Pedestrian	1	4	3.9	OR138	New	ODOT	Douglas
3	2	<b>Birds Point Road to Poole Creek Campground:</b> Shared roadway on Birds Point Road from OR138 to Poole Creel Campground	Bicycle-Pedestrian	3	4	4.0	Birds Point Road	Improve	USFS	Douglas
3	3	<b>NF-430 to East Lemolo Campground:</b> Shared Roadway on NF-430 and connecting USFS roads to East Lemolo Campground	Bicycle-Pedestrian	3	4	4.1	NF-430	Improve	USFS	Douglas
3	4	<b>NF-4792 (Sheep Creek) from OR 130 to Diamond Lake Resort:</b> Shared Roadway on NF-4792 (Sheep Creek) from OR138 to Diamond Lake Resort	Bicycle-Pedestrian	3	4	6.4	NF-4792	Improve	USFS	Douglas
3	5	<b>NF-480 to Diamond Lake Horse Crossing Culvert:</b> Separated bike-ped path from NF-480 to Diamond Lake Horse Crossing culvert on east side of highway	Bicycle-Pedestrian	1	4	5.3	OR138	New	ODOT	Douglas
3	6	<b>NF-4792 to NF-050:</b> Separated bike-ped path from NF-4792 to NF-050 along OR138 on west side of highway	Bicycle-Pedestrian	1	4	4.1	OR138	New	ODOT	Douglas
3	7	<b>NF-050 to OR 230 Interchange:</b> Separated bike-ped path along OR138 from NF-050 to OR230 interchange on west side of highway	Bicycle-Pedestrian	1	4	5.3	OR138	New	ODOT	Douglas
3	8	<b>OR 230/138 Interchange to Claude Lewis Sno-Park:</b> Separated bike-ped path along OR230 from interchange with OR138 to Claude Lewis Sno park on north side of highway	Bicycle-Pedestrian	1	4	12.3	OR230	New	ODOT	Douglas
3	9	<b>Old Diamond Lake Highway from OR 230 MP 23 to MP 12:</b> Shared roadway on Old Diamond Lake	Bicycle-Pedestrian	3	4	11.8	Old Diamond	Improve	USFS	Douglas



		Highway from OR230 at MP 23 to MP 12					Lake Highway			
3	10	<b>NF-2901 at OR 230 MP 12 to NF-6530 at OR 230 MP 6:</b> Shared roadway on NF-2901 NF-2901 at OR 230 MP 12 to NF-6530 at OR 230 MP 6	Bicycle-Pedestrian	3	4	8.1	NF-6530	Improve	USFS	Douglas
3	11	<b>Claude Lewis Sno-Park to OR 62 MP 8:</b> Separated bike-ped path along OR230 from Claude Lewis Sno-Park or OR62 at MP 6	Bicycle-Pedestrian	1	4	3.3	OR62	New	ODOT	Douglas
3	12	<b>OR 62 MP 8 to NF-6530:</b> Separated bike-ped path along OR 62 MP 8 to NF-6530	Bicycle-Pedestrian	1	4	2.1	OR62	New	ODOT	Douglas
4	1	<b>Rogue River Trail to NF-6530:</b> Separated bike-ped path on RRT to NF-6530	Bicycle-Pedestrian	1	4	0.2	OR230	New	ODOT	Jackson
4	2	<b>Rogue River Trail at OR230 to Natural Bridge:</b> Separated bike-ped path on RRT at OR230 to Natural Bridge	Bicycle-Pedestrian	1	4	11.2	RRT	Improve	USFS	Jackson
4	3	<b>Rogue River Trail at OR230 to Bridge at MP 5.25:</b> Separated bike-ped path on RRT at OR230 to bridge at MP 5.25	Bicycle-Pedestrian	1	4	0.8	OR230	Improve	ODOT	Jackson
4	4	<b>OR 230 from MP 5.25 to MP 2:</b> Separated bike-ped path along OE 230 from MP 5.25 to MP 2	Bicycle-Pedestrian	1	4	3.5	OR230	New	ODOT	Jackson
4	5	<b>OR 230 from MP 2 to OR 62 Interchange:</b> Shoulder bike path along OR230 from MP 2 to OR 62 interchange	Bicycle-Pedestrian	2	4	1.5	OR230	Improve	ODOT	Jackson
4	6	<b>OR62/230 Interchange to MP 66:</b> Separated bike-ped path along south side of OR62 from interchange with OR230 to MP 66	Bicycle-Pedestrian	1	4	9.0	OR62	New	ODOT	Jackson
4	7	<b>OR 62 from MP 57 to High Cascades Ranger Station:</b> Separated bike-ped path along west side of OR62 from OR	Bicycle-Pedestrian	1	4	11.7	OR62	New	ODOT	Jackson

		230 interchange to High Cascades Ranger Station								
4	8	<b>Rogue Gorge Trail from Farewell Bend to Discovery OHV:</b> Separated bike-ped path on Rogue Gorge Trail from Farewell Bend Campground to Discovery OHV	Bicycle-Pedestrian	3	4	11.0	Rogue Gorge Trail	Improve	USFS	Jackson
4	9	<b>Discovery OHV from Rogue Gorge Trail to High Cascades Ranger Station:</b> Shared roadway on Discovery OHV to High Cascades Ranger Station	Bicycle-Pedestrian	3	4	3.6	Discovery OHV	Improve	USFS	Jackson
4	10	<b>Rogue Gorge Trail from River Bridger Campground to High Cascades Ranger Station:</b> Separated bike-ped path on Rogue Gorge Trail from River Bridge Campground to High Cascades Ranger Station	Bicycle-Pedestrian	1	4	3.8	Rogue Gorge Trail	Improve	USFS	Jackson
5	1	<b>High Cascades Ranger Station to Peyton Bridge:</b> Separated bike-ped path from High Cascades Ranger Station to Peyton Bridge along OR62	Bicycle-Pedestrian	1/3	4		OR62	New	ODOT	Jackson
5	2	<b>Peyton Bridge to Mill Creek Drive:</b> Separated bike-ped path from Peyton Bridge to Mill Creek Drive on Rogue Gorge Trail	Bicycle-Pedestrian	1	4		Rogue Gorge Trail	New	USACE	Jackson
5	3	<b>North Shore Trail to Takelma Day Use:</b> Separated bike-ped path on North Shore Trail to Takelma Day Use	Bicycle-Pedestrian	1/3	4		North Shore Trail	Improve	USACE	Jackson
5	4	<b>Lost Creek Trailhead to Elk Creek Trail:</b> Pedestrian trail from Lost Creek Trailhead to Elk Creek Trail (also identified in site-specific needs list)	Bicycle-Pedestrian	1	4		NEW	New	USACE	Jackson
5	5	<b>Peyton Bridge to Joseph Stewart State Park Road:</b> Separated bike-ped path along north side of OR62 from Peyton Bridge to Joseph Stewart State Park Road	Bicycle-Pedestrian	1	4		OR62	New	USACE	Jackson

5	6	<b>Peyton Bridge to South Shore Trail:</b> Separated bike-ped path on South Shore Trail from Peyton Bridge to South Shore Trail	Bicycle-Pedestrian	1	4	South Shore Trail	Improve	USACE	Jackson
5	7	<b>South Shore Trail to McLeod:</b> Separated bike-ped path on South Shore Trail to McLeod	Bicycle-Pedestrian	1	4	South Shore Trail	Improve	USACE	Jackson
5	8	<b>McLeod Bridge to Fishing Access Road:</b> Separated bike-ped path from McLeod Bridge to Fishing Access Road	Bicycle-Pedestrian	1	4	McGregor Park Trail	Existing	USACE	Jackson
5	9	<b>Fishing Access Road to Takelma Day Use:</b> Separated bike-ped path from Fishing Access Road to Takelma Day Use	Bicycle-Pedestrian	1	4	New	New	USACE	Jackson
5	10	<b>McLeod Bridge through Casey State Park:</b> Separated bike-ped path through Casey State Park	Bicycle-Pedestrian	1	4	OR62	New	OPRD	Jackson
5	11	<b>McLeod Bridge to OR 62 MP 26:</b> Shoulder bike-ped path along OR62 from McLeod Bridge to OR 62 MP 26	Bicycle-Pedestrian	2	4	OR62	Improve	ODOT	Jackson
5	12	<b>OR 62 MP 26 to Elk Creek Bridge:</b> Shoulder bike-ped path along OR62 from MP 26 to Elk Creek Bridge	Bicycle-Pedestrian	2	4	OR62	New	ODOT	Jackson
5	13	<b>Elk Creek Road to Lower Elk Creek Trailhead:</b> Shoulder bike-ped path along Elk Creek Road to Elk Creek Trailhead	Pedestrian	2	4	Elk Creek Road	Improve	Jackson County	Jackson
5	14	<b>Elk Creek Road to OR 62 MP 25:</b> Separated bike-ped path along OR62 from Elk Creek Road to OR62 MP 25	Bicycle-Pedestrian	1	4	OR62	Improve	ODOT	Jackson
5	15	<b>OR 62 MP 25 to Lodge Road:</b> Shoulder bike-ped path along OR62 at MP 25 to Lodge Road	Bicycle-Pedestrian	2	4	OR62	Improve	ODOT	Jackson
5	16	<b>Lodge Road to Trail:</b> Shoulder bike-ped path along OR62 from Lodge Road to Trail	Bicycle-Pedestrian	2	4	OR62	Improve	ODOT	Jackson
5	17	<b>Trail to Shady Cove Bridge:</b> Shoulder bike-ped path from Trail to Shady	Bicycle-Pedestrian	2	4	OR62	Improve	ODOT	Jackson



		Cove Bridge along OR 62 (mostly exists already)							
5	18	<b>OR 62 MP 26 to Old Ferry Road:</b> Separated bike-ped path from proposed bike-ped bridge from OR62 MP 26 to Old Ferry Road	Bicycle-Pedestrian	1	4	Old Ferry Road	Improve	Jackson County	Jackson
5	19	<b>Old Ferry Road to OR 62:</b> Shoulder bike-ped path on Old Ferry Road to connection with OR 62 south of Shady Cove Bridge	Bicycle-Pedestrian	2	4	Old Ferry Road	Improve	Jackson County	Jackson
5	20	<b>Shady Cove Bridge to OR 234 Interchange:</b> Shoulder bike-ped path from Shady Cove Bridge to OR234 interchange	Bicycle-Pedestrian	2	4	OR62	New	ODOT	Jackson
6	1	<b>OR 62/234 Interchange to Dodge Bridge:</b> Shoulder bike-ped path from OR62/234 interchange along OR234 to Dodge Bridge	Bicycle-Pedestrian	2	4	OR62	Improve	ODOT	Jackson
6	2	<b>Dodge Bridge to Table Rock Road:</b> Shoulder bike-ped path from OR62/234 interchange along OR234 from Dodge Bridge to Table Rock Road	Bicycle-Pedestrian	2	4	OR62	Improve	ODOT	Jackson
6	3	<b>Table Rock Road to Upper Gold Nugget:</b> Separated bike-ped path along OR62 from Table Rock Road to Upper Gold Nugget Wayside	Bicycle-Pedestrian	1	4	OR62	New	ODOT	Jackson
6	4	<b>Upper Gold Nugget to Ti'lomikh Falls:</b> Separated bike-ped path through Upper Gold Nugget Wayside along river to Ti'lomikh Falls	Bicycle-Pedestrian	1	4	OR62	New	BLM; ODOT	Jackson
6	5	<b>Ti'lomikh Falls to City Beach Park:</b> Separated bike-ped path through Ti'lomikh Falls to City Beach Park (already exists)	Bicycle-Pedestrian	1	4	OR62	Existing	Gold Hill	Jackson
6	6	<b>Antioch Road to Table Rock Road:</b> Shoulder bike path on Antioch Road from OR62 to Table Rock Road	Bicycle-Pedestrian	2	4	Antioch Road	Improve	Jackson County	Jackson

6	7	<b>Table Rock Road from OR 62 to Table Rock Bridge:</b> Shoulder bike path on Table Rock Road from OR62 to Table Rock Bridge	Bicycle-Pedestrian	2	4	Table Rock Road	Improve	Jackson County	Jackson
6	8	<b>Tresham Lane to Wheeler Road:</b> Shoulder bike path on Tresham Lane and Wheeler Road	Bicycle-Pedestrian	2	4	Tresham Lane; Wheeler Road	Improve	Jackson County	Jackson

## Attachment 2 – Complete Bridge and Site Needs List

Segment	Need ID	Description	Type	Length (mi)	Facility	Status	Owner	County
1	20	<b>Gateway:</b> Gateway to Scenic Byway at or near Sunshine Park	Recreation		OR138	New		Douglas
1	21	<b>Bicycle-Pedestrian Highway Crossing:</b> Bicycle-Pedestrian Highway Crossing from OR-138 to Little River Road	Crossing		OR138	New		Douglas
1	22	<b>Bicycle-Pedestrian Safety Improvements on Bridge:</b> Bicycle-Pedestrian safety improvements on bridge at Colliding Rivers	Bridge		OR138	Improved		Douglas
1	23	<b>Gateway:</b> Gateway to Scenic Byway at or near USFS North Umpqua Ranger District office	Recreation		OR138	New		Douglas
1	24	<b>Bicycle-Pedestrian Highway Crossing:</b> Bicycle-Pedestrian Highway Crossing to connect Glide separated bike path across OR 138	Crossing		OR138	New		Douglas
1	25	<b>Bicycle-Pedestrian Highway Crossing:</b> Bicycle-Pedestrian Highway Crossing to connect Glide separated bike path across OR 139	Crossing		OR138	New		Douglas
1	26	<b>Proposed Bicycle-Pedestrian Bridge:</b> Proposed bicycle-pedestrian bridge either attached to existing Lone Rock bridge or next to bridge	Bridge		OR138	New		Douglas
1	27	<b>Proposed Bicycle-Pedestrian Bridge:</b> Proposed bicycle-pedestrian bridge crossing the North Umpqua River at Narrows Wayside to BLM lands	Bridge		OR138	New		Douglas
1	28	<b>Bicycle-Pedestrian Safety Improvements on Bridge:</b> Bicycle-Pedestrian safety improvements on Tioga bridge as needed	Bridge		OR138	Improved		Douglas
2	20	<b>Bicycle-Pedestrian Safety Improvements on Bridge:</b> Bicycle-Pedestrian safety improvements on bridge at Horseshoe Bend and Raft Site	Bridge		OR138	Improved		Douglas
2	21	<b>Electric Vehicle Charging Station(s):</b> Electric Vehicle Charging Station(s) at or near Umpqua's Last Resort	EV		OR138	New		Douglas
2	22	<b>Bicycle-Pedestrian Safety Improvements on Bridge:</b> Bicycle-Pedestrian safety improvements on Marsters bridge	Bridge		OR138	Improved		Douglas



2	23	<b>Bicycle-Pedestrian Safety Improvements on Bridge:</b> Bicycle-Pedestrian safety improvements on bridge at Stump Lake	Bridge	OR138	Improved	Douglas
2	24	<b>Proposed Bicycle-Pedestrian Undercrossing:</b> Proposed bicycle-pedestrian culvert undercrossing for OR 138 at NF-4792 and NF-480	Culvert	OR138	New	Douglas
2	25	<b>Electric Vehicle Charging Station(s):</b> Electric Vehicle Charging Station(s) at or near Diamond Lake Resort gas station	EV	OR138	New	Douglas
2	26	<b>Proposed New/Improved Cell Tower:</b> Proposed new/improved cell tower at or near Diamond Lake Resort	Cell Tower	OR138	New	Douglas
2	27	<b>Upgrade to Existing Interpretive Signs:</b> Upgrade to existing interpretive signs at Thielsen/Mt. Bailey Viewpoint	Interpretive	OR230	Improved	Douglas
2	28	<b>Upgrade to Existing Sno-Park Facility:</b> Upgrade existing sno-park facility to accommodate all recreation users and bathroom facilities	Sno-Park	OR230	Improved	Douglas
3	20	<b>Bicycle-Pedestrian safety improvements on bridge:</b> Bicycle-Pedestrian safety improvements on bridge	Bridge	OR230	Improved	Douglas
3	21	<b>Bicycle-Pedestrian safety improvements on bridge:</b> Bicycle-Pedestrian safety improvements on bridge at Muir Creek	Bridge	OR230	Improved	Douglas
3	22	<b>Bicycle-Pedestrian safety improvements on bridge:</b> Bicycle-Pedestrian safety improvements on bridge at OR230 MP 1	Bridge	OR230	Improved	Douglas
3	23	<b>Bicycle-Pedestrian Highway Crossing:</b> Bicycle-Pedestrian Highway Crossing at OR230 and OR62 interchange	Crossing	OR62	New	Douglas
3	24	<b>Proposed bicycle-pedestrian bridge:</b> Proposed bicycle-pedestrian bridge to connect proposed bike path at Fairwell Bend Campground and improved Rogue River Trail on opposite bank	Bridge	OR62	New	Douglas
3	25	<b>Electric Vehicle Charging Station(s):</b> Electric Vehicle Charging Station(s) at or near Union Creek Campground	EV	OR62	New	Douglas
3	26	<b>Bicycle-Pedestrian Highway Crossing:</b> Bicycle-Pedestrian Highway Crossing on OR62 between Union Creek Campground and Union Creek Resort	Crossing	OR62	New	Douglas
3	27	<b>Bicycle-Pedestrian safety improvements on bridge:</b> Bicycle-Pedestrian safety improvements on Natural Bridge	Bridge	OR62	Improved	Douglas

3	28	<b>Bicycle-Pedestrian Highway Crossing:</b> Bicycle-Pedestrian Highway Crossing between High Cascades Ranger Station and proposed separated bike path on OR62	Crossing	OR62	New	Douglas
3	29	<b>Electric Vehicle Charging Station(s):</b> Electric Vehicle Charging Station(s) at or near Propsect Public Library	EV	OR62	New	Douglas
3	30	<b>Bicycle-Pedestrian safety improvements on bridge:</b> Bicycle-Pedestrian safety improvements on bridge at OR62 MP 43.5	Bridge	OR62	Improved	Douglas
4	20	<b>Bicycle-Pedestrian safety improvements on bridge:</b> Bicycle-Pedestrian safety improvements on Peyton bridge	Bridge	OR62	Improved	Jackson
4	21	<b>Campground:</b> Design concepts for a new campground at Catfish Cove	Recreation	OR62	New	Jackson
4	22	<b>Yurts:</b> Expand campground to add yurts	Recreation	OR62	New	Jackson
4	23	<b>Electric Vehicle Charging Station(s):</b> Electric Vehicle Charging Station(s) at or near Lost Creek Marina	EV	OR62	New	Jackson
4	24	<b>Connecting Trail:</b> Explore options for connecting trail over ridge between Lost Creek Trailhead and Lower Elk Creek Trail (also shown in bike-ped needs list)	Recreation	OR62	New	Jackson
4	25	<b>Campground:</b> Design concepts for new campground at former Elk Creek Lake and dam site	Recreation	OR62	New	Jackson
4	26	<b>Bicycle-Pedestrian safety improvements on bridge:</b> Bicycle-Pedestrian safety improvements on McLeod bridge	Bridge	OR62	Improved	Jackson
4	27	<b>Proposed bicycle-pedestrian bridge:</b> Proposed bicycle-pedestrian bridge crossing Rogue River near OR62 MP 26 connecting to Rogue Elk Park	Bridge	OR62	New	Jackson
4	28	<b>Bicycle-Pedestrian safety improvements on bridge:</b> Bicycle-Pedestrian safety improvements on Elk Creek bridge	Bridge	OR62	Improved	Jackson
4	29	<b>Bicycle-Pedestrian safety improvements on bridge:</b> Bicycle-Pedestrian safety improvements on Shady Cove bridge	Bridge	OR62	Improved	Jackson
4	30	<b>Electric Vehicle Charging Station(s):</b> Electric Vehicle Charging Station(s) at or near Upper Rogue Regional County Park	EV	OR62	New	Jackson
4	31	<b>Boat Launch:</b> Boat Launch at or near Upper Rogue Regional County Park	Recreation	OR62	New	Jackson
4	32	<b>Bicycle-Pedestrian Highway Crossing:</b> Bicycle-Pedestrian Highway Crossing near Birch Street and OR62	Crossing	OR62	New	Jackson

5	20	<b>Bicycle-Pedestrian safety improvements on bridge:</b> Bicycle-Pedestrian safety improvements on Dodge bridge	Bridge	OR234	Improved	Jackson
5	21	<b>Trailhead:</b> Trailhead and facilities improvements at Upper Table Rock	Recreation	OR234	Improved	Jackson
5	22	<b>Trailhead:</b> Trailhead and facilities improvements at Lower Table Rock	Recreation	OR234	Improved	Jackson
5	23	<b>Boat Launch:</b> Boat Launch at or near Tou Velle State Park (may already exist)	Recreation	OR234	New	Jackson
5	24	<b>Bicycle-Pedestrian safety improvements on bridge:</b> Bicycle-Pedestrian safety improvements on Table Rock Road bridge at Tou Velle State Park	Bridge	OR234	Improved	Jackson
5	25	<b>Access:</b> Access improvements to Gold Nugget Waysides	Recreation	OR234	Improved	Jackson
5	26	<b>Gateway:</b> Gateway to Scenic Byway at or near Ti'lomikh Falls	Recreation	OR234	New	Jackson
5	27	<b>Electric Vehicle Charging Station(s):</b> Electric Vehicle Charging Station(s) at or near Gold Hill City Hall	EV	OR234	New	Jackson