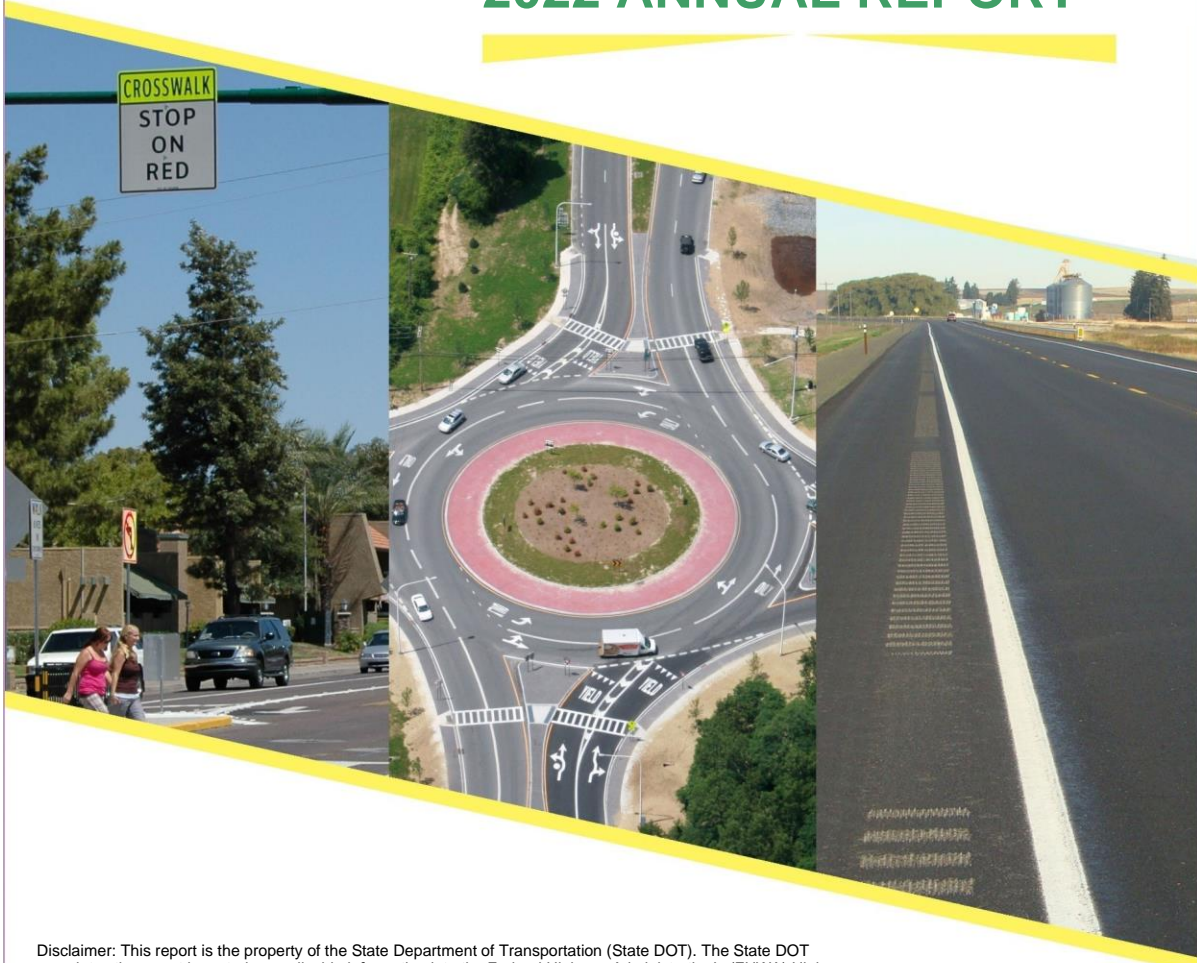


# TEXAS

## HIGHWAY SAFETY IMPROVEMENT PROGRAM 2022 ANNUAL REPORT



Disclaimer: This report is the property of the State Department of Transportation (State DOT). The State DOT completes the report by entering applicable information into the Federal Highway Administration's (FHWA) Highway Safety Improvement Program (HSIP) online reporting tool. Once the State DOT completes the report pertaining to its State, it coordinates with its respective FHWA Division Office to ensure the report meets all legislative and regulatory requirements. FHWA's Headquarters Office of Safety then downloads the State's finalized report and posts it to the website (<https://highways.dot.gov/safety/hsip/reporting>) as required by law (23 U.S.C. 148(h)(3)(A)).

Photo source: Federal Highway Administration

Table of Contents

Disclaimer ..... 3  
    Protection of Data from Discovery Admission into Evidence ..... 3  
Executive Summary ..... 4  
Introduction ..... 5  
Program Structure..... 5  
    Program Administration ..... 5  
    Program Methodology ..... 7  
Project Implementation ..... 11  
    Funds Programmed..... 11  
    General Listing of Projects ..... 13  
Safety Performance ..... 42  
    General Highway Safety Trends..... 42  
    Safety Performance Targets..... 47  
    Applicability of Special Rules..... 50  
Evaluation ..... 51  
    Program Effectiveness ..... 51  
    Effectiveness of Groupings or Similar Types of Improvements ..... 51  
    Project Effectiveness ..... 55  
Compliance Assessment..... 56  
Optional Attachments..... 59  
Glossary..... 60

## **Disclaimer**

### ***Protection of Data from Discovery Admission into Evidence***

23 U.S.C. 148(h)(4) states “Notwithstanding any other provision of law, reports, surveys, schedules, lists, or data compiled or collected for any purpose relating to this section[HSIP], shall not be subject to discovery or admitted into evidence in a Federal or State court proceeding or considered for other purposes in any action for damages arising from any occurrence at a location identified or addressed in the reports, surveys, schedules, lists, or other data.”

23 U.S.C. 407 states “Notwithstanding any other provision of law, reports, surveys, schedules, lists, or data compiled or collected for the purpose of identifying, evaluating, or planning the safety enhancement of potential accident sites, hazardous roadway conditions, or railway-highway crossings, pursuant to sections 130, 144, and 148 of this title or for the purpose of developing any highway safety construction improvement project which may be implemented utilizing Federal-aid highway funds shall not be subject to discovery or admitted into evidence in a Federal or State court proceeding or considered for other purposes in any action for damages arising from any occurrence at a location mentioned or addressed in such reports, surveys, schedules, lists, or data.”

## Executive Summary

During the 2022 State Fiscal Year, TxDOT let 345 projects totaling \$253.7M and an additional \$42M with Road to Zero funds. This is in addition to the systemic and hot spot safety improvements that are incorporated into every construction or maintenance project, a focus of our Design and Construction divisions. These efforts are managed primarily by the Safety Engineering branch of the Traffic Safety Division (TRF) of TxDOT, which is in the Engineering & Operations group.

HSIP funds are administered via formula based on fatal and serious injury crashes, ensuring our program is addressing the areas with greatest need. The overall program is divided into reactive or targeted funding, systemic funding, and funding specifically diverted to reducing fatal and serious injury crashes on off-system roadways. The removal in the 2020 program call of the Statewide Competitive funding process has continued to show results, reducing the workload on all staff and allowing a more thorough review of project plans and estimates.

The Safety Engineering team coordinates closely with District engineering and planning teams to coordinate letting dates, provide crash data, and evaluate project submissions, as well as with our finance division. The staff is also available to answer questions for Federal, state, and local & regional partners.

HSIP projects provide both targeted and systemic engineering solutions to crashes related to the Emphasis Areas in the 2017-2022 SHSP:

- Roadway & Lane Departures:
- Barriers
- Curves
- Rumble Strips
- Widening
- Older Users
- Wrong way driving indicators
- Intersections
- Pedestrians
- Distracted Driving

## Introduction

The Highway Safety Improvement Program (HSIP) is a core Federal-aid program with the purpose of achieving a significant reduction in fatalities and serious injuries on all public roads. As per 23 U.S.C. 148(h) and 23 CFR 924.15, States are required to report annually on the progress being made to advance HSIP implementation and evaluation efforts. The format of this report is consistent with the HSIP Reporting Guidance dated December 29, 2016 and consists of five sections: program structure, progress in implementing highway safety improvement projects, progress in achieving safety outcomes and performance targets, effectiveness of the improvements and compliance assessment.

## Program Structure

### *Program Administration*

#### **Describe the general structure of the HSIP in the State.**

The HSIP is administered by the Texas Department of Transportation, Traffic Safety Division (TRF). The safety engineering branch of Traffic Engineering within TRF issues a statewide program call for highway safety projects to all 25 TxDOT districts. Projects funded in the HSIP are to be limited to improvements that address the serious crash types identified in the most current SHSP.

These projects may range from spot-safety improvements and upgrading of existing conditions to new roadway construction. Typically, highway safety projects are small in scope, low in cost, and can be let to contract within 3-4 years.

When a call for projects is issued, TRF provides each district with both on- and off-system crash data that can be used to identify potential project locations and to develop project proposals. District personnel work with area offices, local governments, tribal entities, and MPO's to determine the appropriate countermeasures and timeframe, then districts submit all project proposals to TRF.

All eligible proposed highway safety projects are subjected to a benefit/cost analysis. The formula currently used for this purpose is the Safety Improvement Index (SII).

In its most basic form, the SII is the ratio of the annual savings in preventable crash costs that have occurred at a location to the cost of constructing the proposed improvement. The SII incorporates adjustments to provide additional benefit for:

- Locations experiencing increasing traffic over the project life,
- Improvements that will reduce maintenance cost, and,
- Projects expected to have long service lives over which construction costs can be amortized.

Beginning with state fiscal year 2022, the new HSIP process removed statewide prioritization in favor of district expertise. Each district determines their top priority safety projects based on district crash data to reduce severe injury crashes, benefit/cost (SII), or systemic projects applicable to their top focus emphasis areas. The Traffic Safety Division supports this effort with extensive crash data analysis tools.

#### **Where is HSIP staff located within the State DOT?**

Operations

## How are HSIP funds allocated in a State?

- Formula via Districts/Regions

## Describe how local and tribal roads are addressed as part of HSIP.

TxDOT offices notify stakeholders in their districts when a call for project proposals has been issued. Local and tribal entities submit their proposals to their TxDOT district office for submission to TRF-TE-Safety. Local and tribal roads are evaluated separately from on-system proposals but using the same rules, guidelines, and requirements. TxDOT has set aside approximately 10% of HSIP funding for the improvement of local road safety.

## Identify which internal partners (e.g., State departments of transportation (DOTs) Bureaus, Divisions) are involved with HSIP planning.

- Design
- Districts/Regions
- Maintenance
- Operations
- Planning
- Traffic Engineering/Safety

## Describe coordination with internal partners.

TRF (Traffic Engineering/Safety)

- Using the most current Strategic Highway Safety Plan (SHSP), the Safety Engineering team identifies program safety emphasis areas, scopes of work to be funded through that call, and applicable ranking measures for each scope of work.
- The Safety Engineering team provides crash data, particularly hot spots and emphasis area trends, and funding guidance to the district HSIP teams.

District (Design/Operations):

- Weighs crash data, historic areas of complaint, maintenance histories, and local pressures, then select projects to submit to TRF for consensus. Districts also evaluate whether projects are feasible and to verify that appropriate countermeasures addressing the location's safety needs have not already been implemented or scheduled for construction.
- Works with area offices and local governments to gather additional location information and to identify any potential locations that may have been excluded due to incomplete or inaccurate crash and/or roadway data.
- Completes and submits projects containing requested data to the Texas Department of Transportation (TxDOT) Traffic Safety Division (TRF) along with necessary backup data (typical sections, layouts, detailed estimates, etc.) in response to the program call.
- Prior to submission, the district teams should conduct a current field evaluation to determine the appropriate countermeasures and develop a detailed estimate.

TRF (Traffic Engineering/Safety):

- Analyzes the proposed highway safety projects for HSIP eligibility, data accuracy, and conformance to design standards.

## 2022 Texas Highway Safety Improvement Program

- Meets with each district to review the list of projects
- Analyzes each eligible project's Safety Improvement Index (SII), if applicable.
- Sends a listing of highway safety projects selected for funding in the HSIP to the districts.

### District (Planning):

- Sets projects up in the Design/Construction Information System (DCIS) (now replaced by TxDOTCONNECT) in the assigned work program and may include qualifying projects in the Transportation Improvement Program (TIP) as appropriate.

### District (Design/Operations):

- Notifies TRF of an overrun of an HSIP project's authorized funds prior to Plans, Specifications, and Estimate (PS&E) submittal.
- Submits PS&E for HSIP projects to TRF in accordance with standard PS&E submission schedule.

### TRF (Traffic Engineering/Safety)

- Handles overruns of project authorized funds at the divisional PS&E review stage in accordance with the current TxDOT policy.
- Tracks projects through to letting and addresses changes in cost, scope, and schedule are addressed prior to award whenever possible.

## **Identify which external partners are involved with HSIP planning.**

- Academia/University
- FHWA
- Local Government Agency
- Regional Planning Organizations (e.g. MPOs, RPOs, COGs)

## **Describe coordination with external partners.**

TxDOT offices notify stakeholders such as Local Government Agencies, MPOs, COGs, and other interested organizations in their districts when a call for project proposals has been issued. The district evaluates local submissions and provides advice regarding the eligibility and viability of safety projects suggested by the local municipality. The district submits all local proposals that meet the requirements of the HSIP and are considered safety projects by the district to TRF for funding consideration.

District personnel also work with these local stakeholders to identify problem locations, share information, and build relationships with an eye toward future safety improvements.

TxDOT contracts with the Texas Transportation Institute at Texas A&M University to provide crash analysis & visualization data (CAVs), as well as assistance determining the effectiveness of countermeasures for inclusion in the HSIP.

## ***Program Methodology***

### **Does the State have an HSIP manual or similar that clearly describes HSIP planning, implementation and evaluation processes?**

Yes

**Select the programs that are administered under the HSIP.**

- Other-Systemic Improvements
- Other-Targeted/Hot Spot Improvements

**Program: Other-Systemic Improvements**

***Date of Program Methodology:9/1/2020***

***What is the justification for this program?***

- Addresses SHSP priority or emphasis area
- FHWA focused approach to safety

***What is the funding approach for this program?***

Funding set-aside

***What data types were used in the program methodology?***

Crashes	Exposure	Roadway
<ul style="list-style-type: none"><li>• Fatal and serious injury crashes only</li></ul>		

***What project identification methodology was used for this program?***

- Probability of specific crash types

***Are local roads (non-state owned and operated) included or addressed in this program?***

Yes

***Are local road projects identified using the same methodology as state roads?***

Yes

***How are projects under this program advanced for implementation?***

- Other-District Prioritization

***Select the processes used to prioritize projects for implementation. For the methods selected, indicate the relative importance of each process in project prioritization. Enter either the weights or numerical rankings. If weights are entered, the sum must equal 100. If ranks are entered, indicate ties by giving both processes the same rank and skip the next highest rank (as an example: 1, 2, 2, 4).***

Rank of Priority Consideration

Available funding:50

Other-Allowed systemic measures:50



**Program: Other-Targeted/Hot Spot Improvements**

***Date of Program Methodology:9/1/2020***

***What is the justification for this program?***

- Addresses SHSP priority or emphasis area
- FHWA focused approach to safety

***What is the funding approach for this program?***

Funding set-aside

***What data types were used in the program methodology?***

Crashes	Exposure	Roadway
<ul style="list-style-type: none"><li>• Fatal and serious injury crashes only</li></ul>		

***What project identification methodology was used for this program?***

- Other-Safety Improvement Index

***Are local roads (non-state owned and operated) included or addressed in this program?***

Yes

***Are local road projects identified using the same methodology as state roads?***

Yes

***How are projects under this program advanced for implementation?***

- Other-District Prioritization

***Select the processes used to prioritize projects for implementation. For the methods selected, indicate the relative importance of each process in project prioritization. Enter either the weights or numerical rankings. If weights are entered, the sum must equal 100. If ranks are entered, indicate ties by giving both processes the same rank and skip the next highest rank (as an example: 1, 2, 2, 4).***

Rank of Priority Consideration

Available funding:50

Cost Effectiveness:50

***What percentage of HSIP funds address systemic improvements?***

40

**HSIP funds are used to address which of the following systemic improvements?**

- Cable Median Barriers
- Horizontal curve signs
- Other-Intersection Improvements
- Other-Pedestrian Safety improvements
- Pavement/Shoulder Widening

**What process is used to identify potential countermeasures?**

- Crash data analysis
- Data-driven safety analysis tools (HSM, CMF Clearinghouse, SafetyAnalyst, usRAP)
- Engineering Study
- SHSP/Local road safety plan
- Stakeholder input

**Does the State HSIP consider connected vehicles and ITS technologies?**

No

**Does the State use the Highway Safety Manual to support HSIP efforts?**

Yes

**Please describe how the State uses the HSM to support HSIP efforts.**

TxDOT implemented Highway Safety Manual (HSM) methods and tools to perform network screening, diagnosis, and countermeasure selection for the Highway Safety Improvement Program (HSIP). With regard to network screening, TxDOT applied the sliding window method to calculate seven HSM performance measures: crash frequency, crash rate, critical rate, excess predicted average crash frequency using method of moments, excess predicted average crash frequency using Safety Performance Functions, probability of specific crash types exceeding threshold proportion, and excess proportion of specific crash types.

Further, TxDOT developed Crash Analysis and Visualization (CAVS) data to enhance the process of selecting safety projects to submit for HSIP funding consideration. Crash data and crash attributes for all Fatal (K) and Suspected Serious Injury (A) crashes statewide were compiled into a spreadsheet. Each HSIP work code was analyzed for each crash to determine whether that crash could be prevented by the type of work. All of the K and A crashes were then mapped in Google Earth. The maps can be filtered to only show crashes that apply to a particular type of work. For example, all crashes that could be prevented with the addition of rumble strips can be mapped to help identify the best place to install the rumble strips. Master plans can also be added to the CAVS data. The master plans include the limits of completed projects, programmed projects and identified projects. The master plans along with the applicable crashes for each work type were displayed on a single map that identifies the projects with the highest potential benefit-cost ratio.

TxDOT Districts use the network screening process to assist in their selection of candidate HSIP projects.

## Project Implementation

### *Funds Programmed*

#### Reporting period for HSIP funding.

State Fiscal Year

The State Fiscal Year is September 1st, 2021-August 31st, 2022.

#### Enter the programmed and obligated funding for each applicable funding category.

FUNDING CATEGORY	PROGRAMMED	OBLIGATED	% OBLIGATED/PROGRAMMED
HSIP (23 U.S.C. 148)	\$298,727,354	\$253,693,955	84.92%
HRRR Special Rule (23 U.S.C. 148(g)(1))	\$0	\$0	0%
Penalty Funds (23 U.S.C. 154)	\$0	\$0	0%
Penalty Funds (23 U.S.C. 164)	\$0	\$0	0%
RHCP (for HSIP purposes) (23 U.S.C. 130(e)(2))	\$0	\$0	0%
Other Federal-aid Funds (i.e. STBG, NHPP)	\$0	\$0	0%
State and Local Funds	\$0	\$0	0%
<b>Totals</b>	<b>\$298,727,354</b>	<b>\$253,693,955</b>	<b>84.92%</b>

#### How much funding is programmed to local (non-state owned and operated) or tribal safety projects?

10%

#### How much funding is obligated to local or tribal safety projects?

\$22,300,664

#### How much funding is programmed to non-infrastructure safety projects?

\$0

#### How much funding is obligated to non-infrastructure safety projects?

\$0

#### How much funding was transferred in to the HSIP from other core program areas during the reporting period under 23 U.S.C. 126?

\$0

**How much funding was transferred out of the HSIP to other core program areas during the reporting period under 23 U.S.C. 126?**

\$0

**Discuss impediments to obligating HSIP funds and plans to overcome this challenge in the future.**

We do not have any impediments to obligating our HSIP funds at this time. Our Administration is supportive of the program and provides us with appropriate obligation authority.

**General Listing of Projects**

List the projects obligated using HSIP funds for the reporting period.

PROJECT NAME	IMPROVEMENT CATEGORY	SUBCATEGORY	OUTPUTS	OUTPUT TYPE	HSIP PROJECT COST(\$)	TOTAL PROJECT COST(\$)	FUNDING CATEGORY	LAND USE/AREA TYPE	FUNCTIONAL CLASSIFICATION	AADT	SPEED	OWNERSHIP	METHOD FOR SITE SELECTION	SHSP EMPHASIS AREA	SHSP STRATEGY
0002-04-033	Shoulder treatments	Widen shoulder – paved or other (includes add shoulder)	5.524	Miles	\$3384597	\$3384597	HSIP (23 U.S.C. 148)	Multiple/Varies	Multiple/Varies	0		State Highway Agency	Systemic	Roadway Departure	
0002-12-028	Intersection traffic control	Modify traffic signal –other	0.2	Miles	\$314930	\$314930	HSIP (23 U.S.C. 148)	Multiple/Varies	Multiple/Varies	0		State Highway Agency	Spot	Intersections	
0005-01-115	Intersection traffic control	Modify control – new traffic signal	0.4	Miles	\$703025	\$703025	HSIP (23 U.S.C. 148)	Multiple/Varies	Multiple/Varies	0		State Highway Agency	Spot	Intersections	
0008-02-077	Intersection traffic control	Intersection flashers –sign-mounted or overhead			\$184031	\$184031	HSIP (23 U.S.C. 148)	Multiple/Varies	Multiple/Varies	0		State Highway Agency	Spot	Intersections	
0008-14-118	Pedestrians and bicyclists	Pedestrians and bicyclists – other	0.246	Miles	\$133150	\$133150	HSIP (23 U.S.C. 148)	Multiple/Varies	Multiple/Varies	0		State Highway Agency	Spot	Roadway Departure	
0008-14-120	Roadway delineation	Raised pavement markers	8.899	Miles	\$52458	\$52458	HSIP (23 U.S.C. 148)	Multiple/Varies	Multiple/Varies	0		State Highway Agency	Spot	Roadway Departure	
0013-08-144	Roadside	Barrier - other	14.928	Miles	\$1371550	\$1371550	HSIP (23 U.S.C. 148)	Multiple/Varies	Multiple/Varies	0		State Highway Agency	Systemic	Roadway Departure	
0014-03-101	Lighting	Continuous roadway lighting	3.907	Miles	\$1069600	\$1069600	HSIP (23 U.S.C. 148)	Multiple/Varies	Multiple/Varies	0		State Highway Agency	Spot	Roadway Departure	
0015-01-252	Roadway	Pavement surface - other	0.55	Miles	\$485151	\$485151	HSIP (23 U.S.C. 148)	Multiple/Varies	Multiple/Varies	0		State Highway Agency	Spot	Roadway Departure	
0015-07-086	Roadway	Pavement surface - other	1.35	Miles	\$334014	\$334014	HSIP (23 U.S.C. 148)	Multiple/Varies	Multiple/Varies	0		State Highway Agency	Spot	Roadway Departure	
0015-14-132	Roadway	Pavement surface - other	1.257	Miles	\$388006	\$388006	HSIP (23 U.S.C. 148)	Multiple/Varies	Multiple/Varies	0		State Highway Agency	Spot	Roadway Departure	
0016-01-133	Intersection traffic control	Modify control – new traffic signal	0.2	Miles	\$547789	\$547789	HSIP (23 U.S.C. 148)	Multiple/Varies	Multiple/Varies	0		State Highway Agency	Spot	Intersections	

2022 Texas Highway Safety Improvement Program

PROJECT NAME	IMPROVEMENT CATEGORY	SUBCATEGORY	OUTPUTS	OUTPUT TYPE	HSIP PROJECT COST(\$)	TOTAL PROJECT COST(\$)	FUNDING CATEGORY	LAND USE/AREA TYPE	FUNCTIONAL CLASSIFICATION	AADT	SPEED	OWNERSHIP	METHOD FOR SITE SELECTION	SHSP EMPHASIS AREA	SHSP STRATEGY
0016-08-043	Pedestrians and bicyclists	Pedestrians and bicyclists – other	1.168	Miles	\$556344	\$556344	HSIP (23 U.S.C. 148)	Multiple/Varies	Multiple/Varies	0		State Highway Agency	Spot	Pedestrians	
0016-10-025	Roadway	Roadway narrowing (road diet, roadway reconfiguration)	0.189	Miles	\$539210	\$539210	HSIP (23 U.S.C. 148)	Multiple/Varies	Multiple/Varies	0		State Highway Agency	Spot	Intersections	
0017-06-091	Roadside	Barrier - other	7.1	Miles	\$1339295	\$1339295	HSIP (23 U.S.C. 148)	Multiple/Varies	Multiple/Varies	0		State Highway Agency	Systemic	Roadway Departure	
0017-07-138	Intersection traffic control	Intersection signing – add enhanced advance warning (double-up and/or oversize)	0.2	Miles	\$18395	\$18395	HSIP (23 U.S.C. 148)	Multiple/Varies	Multiple/Varies	0		State Highway Agency	Spot	Pedestrians	
0017-09-111	Roadside	Barrier - other	1.624	Miles	\$382033	\$382033	HSIP (23 U.S.C. 148)	Multiple/Varies	Multiple/Varies	0		State Highway Agency	Systemic	Roadway Departure	
0017-09-112	Lighting	Continuous roadway lighting	1.624	Miles	\$728835	\$728835	HSIP (23 U.S.C. 148)	Multiple/Varies	Multiple/Varies	0		State Highway Agency	Spot	Roadway Departure	
0018-02-089	Roadside	Barrier - other	5.364	Miles	\$1081952	\$1081952	HSIP (23 U.S.C. 148)	Multiple/Varies	Multiple/Varies	0		State Highway Agency	Systemic	Roadway Departure	
0018-06-215	Lighting	Continuous roadway lighting	0.343	Miles	\$142685	\$142685	HSIP (23 U.S.C. 148)	Multiple/Varies	Multiple/Varies	0		State Highway Agency	Spot	Roadway Departure	
0019-03-028, 0418-03-025	Roadside	Roadside - other	17.312	Miles	\$5879953	\$5879953	HSIP (23 U.S.C. 148)	Multiple/Varies	Multiple/Varies	0		State Highway Agency	Spot	Roadway Departure	
0024-06-069	Roadside	Barrier - other	3.078	Miles	\$674926	\$674926	HSIP (23 U.S.C. 148)	Multiple/Varies	Multiple/Varies	0		State Highway Agency	Systemic	Roadway Departure	
0025-09-084	Intersection traffic control	Modify traffic signal –other	0.1	Miles	\$75911	\$75911	HSIP (23 U.S.C. 148)	Multiple/Varies	Multiple/Varies	0		State Highway Agency	Spot	Intersections	
0025-09-085	Intersection traffic control	Modify traffic signal –other	0.1	Miles	\$286788	\$286788	HSIP (23 U.S.C. 148)	Multiple/Varies	Multiple/Varies	0		State Highway Agency	Spot	Intersections	
0025-09-086	Intersection traffic control	Modify traffic signal –other	0.1	Miles	\$310717	\$310717	HSIP (23 U.S.C. 148)	Multiple/Varies	Multiple/Varies	0		State Highway Agency	Spot	Intersections	

2022 Texas Highway Safety Improvement Program

PROJECT NAME	IMPROVEMENT CATEGORY	SUBCATEGORY	OUTPUTS	OUTPUT TYPE	HSIP PROJECT COST(\$)	TOTAL PROJECT COST(\$)	FUNDING CATEGORY	LAND USE/AREA TYPE	FUNCTIONAL CLASSIFICATION	AADT	SPEED	OWNERSHIP	METHOD FOR SITE SELECTION	SHSP EMPHASIS AREA	SHSP STRATEGY
0028-13-141	Advanced technology and ITS	Wrong-way Driving Detection System	4.51	Miles	\$916568	\$916568	HSIP (23 U.S.C. 148)	Multiple/Varies	Multiple/Varies	0		State Highway Agency	Spot	Older Drivers	
0034-06-014	Roadside	Roadside - other	7.799	Miles	\$120930	\$120930	HSIP (23 U.S.C. 148)	Multiple/Varies	Multiple/Varies	0		State Highway Agency	Spot	Roadway Departure	
0035-03-053	Roadside	Roadside - other	14.171	Miles	\$484522	\$484522	HSIP (23 U.S.C. 148)	Multiple/Varies	Multiple/Varies	0		State Highway Agency	Spot	Roadway Departure	
0038-07-081	Intersection traffic control	Modify traffic signal –other	0.200	Miles	\$208003	\$208003	HSIP (23 U.S.C. 148)	Multiple/Varies	Multiple/Varies	0		State Highway Agency	Spot	Intersections	
0039-01-100	Intersection traffic control	Modify traffic signal –other	0.2	Miles	\$121274	\$121274	HSIP (23 U.S.C. 148)	Multiple/Varies	Multiple/Varies	0		State Highway Agency	Spot	Intersections	
0039-01-101	Intersection traffic control	Intersection flashers –sign-mounted or overhead	0.2	Miles	\$46068	\$46068	HSIP (23 U.S.C. 148)	Multiple/Varies	Multiple/Varies	0		State Highway Agency	Spot	Intersections	
0039-04-130	Intersection traffic control	Modify traffic signal –other	0.2	Miles	\$102331	\$102331	HSIP (23 U.S.C. 148)	Multiple/Varies	Multiple/Varies	0		State Highway Agency	Spot	Intersections	
0039-10-087	Intersection traffic control	Modify traffic signal –other	0.2	Miles	\$69940	\$69940	HSIP (23 U.S.C. 148)	Multiple/Varies	Multiple/Varies	0		State Highway Agency	Spot	Intersections	
0039-10-088	Intersection traffic control	Modify traffic signal –other	0.200	Miles	\$158327	\$158327	HSIP (23 U.S.C. 148)	Multiple/Varies	Multiple/Varies	0		State Highway Agency	Spot	Intersections	
0039-10-089	Intersection traffic control	Modify traffic signal –other	0.200	Miles	\$193559	\$193559	HSIP (23 U.S.C. 148)	Multiple/Varies	Multiple/Varies	0		State Highway Agency	Spot	Intersections	
0039-12-264	Intersection traffic control	Modify traffic signal –other	0.2	Miles	\$31882	\$31882	HSIP (23 U.S.C. 148)	Multiple/Varies	Multiple/Varies	0		State Highway Agency	Spot	Intersections	
0039-12-265	Intersection traffic control	Intersection flashers –sign-mounted or overhead	0.2	Miles	\$50853	\$50853	HSIP (23 U.S.C. 148)	Multiple/Varies	Multiple/Varies	0		State Highway Agency	Spot	Intersections	
0039-12-266	Intersection traffic control	Intersection flashers –sign-mounted or overhead	0.2	Miles	\$36515	\$36515	HSIP (23 U.S.C. 148)	Multiple/Varies	Multiple/Varies	0		State Highway Agency	Spot	Intersections	

2022 Texas Highway Safety Improvement Program

PROJECT NAME	IMPROVEMENT CATEGORY	SUBCATEGORY	OUTPUTS	OUTPUT TYPE	HSIP PROJECT COST(\$)	TOTAL PROJECT COST(\$)	FUNDING CATEGORY	LAND USE/AREA TYPE	FUNCTIONAL CLASSIFICATION	AADT	SPEED	OWNERSHIP	METHOD FOR SITE SELECTION	SHSP EMPHASIS AREA	SHSP STRATEGY
0039-16-071	Pedestrians and bicyclists	Pedestrians and bicyclists – other	0.2	Miles	\$114398	\$114398	HSIP (23 U.S.C. 148)	Multiple/Varies	Multiple/Varies	0		State Highway Agency	Spot	Pedestrians	
0039-18-125	Intersection traffic control	Modify traffic signal –other	0.2	Miles	\$148542	\$148542	HSIP (23 U.S.C. 148)	Multiple/Varies	Multiple/Varies	0		State Highway Agency	Spot	Intersections	
0045-18-044	Intersection geometry	Intersection geometry - other	0.2	Miles	\$1698700	\$1698700	HSIP (23 U.S.C. 148)	Multiple/Varies	Multiple/Varies	0		State Highway Agency	Spot	Intersections	
0045-18-045	Intersection traffic control	Intersection flashers –sign-mounted or overhead	0.2	Miles	\$204996	\$204996	HSIP (23 U.S.C. 148)	Multiple/Varies	Multiple/Varies	0		State Highway Agency	Spot	Intersections	
0046-06-082	Intersection traffic control	Modify control – new traffic signal	0.5	Miles	\$248913	\$248913	HSIP (23 U.S.C. 148)	Multiple/Varies	Multiple/Varies	0		State Highway Agency	Spot	Intersections	
0047-07-237	Intersection traffic control	Modify traffic signal –other	0.2	Miles	\$502781	\$502781	HSIP (23 U.S.C. 148)	Multiple/Varies	Multiple/Varies	0		State Highway Agency	Spot	Intersections	
0047-07-238	Intersection traffic control	Modify traffic signal –other	0.2	Miles	\$500353	\$500353	HSIP (23 U.S.C. 148)	Multiple/Varies	Multiple/Varies	0		State Highway Agency	Spot	Intersections	
0049-08-074	Intersection traffic control	Modify control – new traffic signal	0.2	Miles	\$1078744	\$1078744	HSIP (23 U.S.C. 148)	Multiple/Varies	Multiple/Varies	0		State Highway Agency	Spot	Intersections	
0049-09-083, 0050-01-088	Pedestrians and bicyclists	Pedestrians and bicyclists – other	5.133	Miles	\$4951884	\$4951884	HSIP (23 U.S.C. 148)	Multiple/Varies	Multiple/Varies	0		State Highway Agency	Spot	Roadway Departure	
0049-09-089, 0049-12-137	Intersection geometry	Add/modify auxiliary lanes	0.386	Miles	\$1263827	\$1263827	HSIP (23 U.S.C. 148)	Multiple/Varies	Multiple/Varies	0		State Highway Agency	Spot	Roadway Departure	
0049-09-090	Roadside	Barrier - other	2.276	Miles	\$490975	\$490975	HSIP (23 U.S.C. 148)	Multiple/Varies	Multiple/Varies	0		State Highway Agency	Systemic	Roadway Departure	
0050-02-119	Roadside	Barrier - other	7.232	Miles	\$957152	\$957152	HSIP (23 U.S.C. 148)	Multiple/Varies	Multiple/Varies	0		State Highway Agency	Systemic	Roadway Departure	
0051-02-108, 0051-06-019	Pedestrians and bicyclists	Pedestrians and bicyclists – other	14.54	Miles	\$5450260	\$5450260	HSIP (23 U.S.C. 148)	Multiple/Varies	Multiple/Varies	0		State Highway Agency	Spot	Pedestrians	



2022 Texas Highway Safety Improvement Program

PROJECT NAME	IMPROVEMENT CATEGORY	SUBCATEGORY	OUTPUTS	OUTPUT TYPE	HSIP PROJECT COST(\$)	TOTAL PROJECT COST(\$)	FUNDING CATEGORY	LAND USE/AREA TYPE	FUNCTIONAL CLASSIFICATION	AADT	SPEED	OWNERSHIP	METHOD FOR SITE SELECTION	SHSP EMPHASIS AREA	SHSP STRATEGY
0051-03-119	Roadside	Roadside - other	3.7	Miles	\$1382614	\$1382614	HSIP (23 U.S.C. 148)	Multiple/Varies	Multiple/Varies	0		State Highway Agency	Spot	Roadway Departure	
0051-09-126	Intersection traffic control	Modify control – new traffic signal	0.2	Miles	\$353945	\$353945	HSIP (23 U.S.C. 148)	Multiple/Varies	Multiple/Varies	0		State Highway Agency	Spot	Intersections	
0052-05-047, 0052-06-026	Roadside	Barrier - other	6.096	Miles	\$1410055	\$1410055	HSIP (23 U.S.C. 148)	Multiple/Varies	Multiple/Varies	0		State Highway Agency	Spot	Roadway Departure	
0052-06-027	Roadside	Barrier - other	4.391	Miles	\$786550	\$786550	HSIP (23 U.S.C. 148)	Multiple/Varies	Multiple/Varies	0		State Highway Agency	Systemic	Roadway Departure	
0055-07-064, 0055-08-129	Roadside	Barrier - other	8.224	Miles	\$1815348	\$1815348	HSIP (23 U.S.C. 148)	Multiple/Varies	Multiple/Varies	0		State Highway Agency	Systemic	Roadway Departure	
0063-05-040	Roadside	Barrier - other	1.402	Miles	\$480465	\$480465	HSIP (23 U.S.C. 148)	Multiple/Varies	Multiple/Varies	0		State Highway Agency	Systemic	Roadway Departure	
0067-04-056	Roadside	Barrier - other	7.882	Miles	\$1478054	\$1478054	HSIP (23 U.S.C. 148)	Multiple/Varies	Multiple/Varies	0		State Highway Agency	Systemic	Roadway Departure	
0073-08-202	Intersection traffic control	Intersection signing – add enhanced advance warning (double-up and/or oversize)	2.476	Miles	\$175708	\$175708	HSIP (23 U.S.C. 148)	Multiple/Varies	Multiple/Varies	0		State Highway Agency	Spot	Roadway Departure	
0077-09-010	Roadside	Roadside - other	4.292	Miles	\$169122	\$169122	HSIP (23 U.S.C. 148)	Multiple/Varies	Multiple/Varies	0		State Highway Agency	Spot	Roadway Departure	
0086-01-098	Intersection traffic control	Modify traffic signal timing – signal coordination	4.069	Miles	\$180897	\$180897	HSIP (23 U.S.C. 148)	Multiple/Varies	Multiple/Varies	0		State Highway Agency	Spot	Intersections	
0093-05-053	Pedestrians and bicyclists	Pedestrian signal - other	4.78	Miles	\$150646	\$150646	HSIP (23 U.S.C. 148)	Multiple/Varies	Multiple/Varies	0		State Highway Agency	Spot	Pedestrians	
0094-02-135	Intersection traffic control	Intersection signing – add enhanced advance warning (double-up and/or oversize)	0.446	Miles	\$122036	\$122036	HSIP (23 U.S.C. 148)	Multiple/Varies	Multiple/Varies	0		State Highway Agency	Spot	Intersections	

2022 Texas Highway Safety Improvement Program

PROJECT NAME	IMPROVEMENT CATEGORY	SUBCATEGORY	OUTPUTS	OUTPUT TYPE	HSIP PROJECT COST(\$)	TOTAL PROJECT COST(\$)	FUNDING CATEGORY	LAND USE/AREA TYPE	FUNCTIONAL CLASSIFICATION	AADT	SPEED	OWNERSHIP	METHOD FOR SITE SELECTION	SHSP EMPHASIS AREA	SHSP STRATEGY
0094-02-140	Lighting	Intersection lighting	7.36	Miles	\$309363	\$309363	HSIP (23 U.S.C. 148)	Multiple/Varies	Multiple/Varies	0		State Highway Agency	Spot	Intersections	
0096-09-083	Roadway delineation	Raised pavement markers	4.854	Miles	\$45082	\$45082	HSIP (23 U.S.C. 148)	Multiple/Varies	Multiple/Varies	0		State Highway Agency	Spot	Roadway Departure	
0099-01-035	Roadway	Roadway widening - add lane(s) along segment	2.661	Miles	\$2574526	\$2574526	HSIP (23 U.S.C. 148)	Multiple/Varies	Multiple/Varies	0		State Highway Agency	Spot	Roadway Departure	
0100-04-042	Intersection traffic control	Intersection flashers -sign-mounted or overhead	0.2	Miles	\$66383	\$66383	HSIP (23 U.S.C. 148)	Multiple/Varies	Multiple/Varies	0		State Highway Agency	Spot	Intersections	
0100-05-187	Lighting	Intersection lighting	1	Miles	\$257824	\$257824	HSIP (23 U.S.C. 148)	Multiple/Varies	Multiple/Varies	0		State Highway Agency	Spot	Intersections	
0100-05-188	Intersection traffic control	Intersection flashers -sign-mounted or overhead	1	Miles	\$226984	\$226984	HSIP (23 U.S.C. 148)	Multiple/Varies	Multiple/Varies	0		State Highway Agency	Spot	Intersections	
0101-04-128	Roadside	Barrier - other	5.691	Miles	\$993619	\$993619	HSIP (23 U.S.C. 148)	Multiple/Varies	Multiple/Varies	0		State Highway Agency	Systemic	Roadway Departure	
0102-03-090, 0102-04-107	Roadside	Barrier - other	6.03	Miles	\$950677	\$950677	HSIP (23 U.S.C. 148)	Multiple/Varies	Multiple/Varies	0		State Highway Agency	Systemic	Roadway Departure	
0111-09-045	Intersection traffic control	Intersection flashers -sign-mounted or overhead	0.2	Miles	\$166957	\$166957	HSIP (23 U.S.C. 148)	Multiple/Varies	Multiple/Varies	0		State Highway Agency	Spot	Intersections	
0113-02-068	Roadway	Roadway narrowing (road diet, roadway reconfiguration)	1.913	Miles	\$4808216	\$4808216	HSIP (23 U.S.C. 148)	Multiple/Varies	Multiple/Varies	0		State Highway Agency	Spot	Roadway Departure	
0114-09-090	Lighting	Intersection lighting	0.2	Miles	\$106919	\$106919	HSIP (23 U.S.C. 148)	Multiple/Varies	Multiple/Varies	0		State Highway Agency	Spot	Intersections	
0114-10-100	Lighting	Intersection lighting	0.2	Miles	\$49336	\$49336	HSIP (23 U.S.C. 148)	Multiple/Varies	Multiple/Varies	0		State Highway Agency	Spot	Intersections	

2022 Texas Highway Safety Improvement Program

PROJECT NAME	IMPROVEMENT CATEGORY	SUBCATEGORY	OUTPUTS	OUTPUT TYPE	HSIP PROJECT COST(\$)	TOTAL PROJECT COST(\$)	FUNDING CATEGORY	LAND USE/AREA TYPE	FUNCTIONAL CLASSIFICATION	AADT	SPEED	OWNERSHIP	METHOD FOR SITE SELECTION	SHSP EMPHASIS AREA	SHSP STRATEGY
0116-04-109	Intersection traffic control	Modify control – new traffic signal	0.4	Miles	\$611488	\$611488	HSIP (23 U.S.C. 148)	Multiple/Varies	Multiple/Varies	0		State Highway Agency	Spot	Intersections	
0121-02-061	Roadway	Pavement surface - other	6.34	Miles	\$2048218	\$2048218	HSIP (23 U.S.C. 148)	Multiple/Varies	Multiple/Varies	0		State Highway Agency	Spot	Roadway Departure	
0122-03-033	Intersection geometry	Add/modify auxiliary lanes	0.2	Miles	\$854267	\$854267	HSIP (23 U.S.C. 148)	Multiple/Varies	Multiple/Varies	0		State Highway Agency	Spot	Intersections	
0130-04-035	Roadside	Roadside - other	16.605	Miles	\$866659	\$866659	HSIP (23 U.S.C. 148)	Multiple/Varies	Multiple/Varies	0		State Highway Agency	Spot	Roadway Departure	
0139-04-053	Intersection traffic control	Modify control – new traffic signal			\$194828	\$194828	HSIP (23 U.S.C. 148)	Multiple/Varies	Multiple/Varies	0		State Highway Agency	Spot	Intersections	
0140-10-034	Roadside	Roadside - other	13.011	Miles	\$1491409	\$1491409	HSIP (23 U.S.C. 148)	Multiple/Varies	Multiple/Varies	0		State Highway Agency	Spot	Roadway Departure	
0140-13-025	Roadside	Barrier - other	9.135	Miles	\$1716802	\$1716802	HSIP (23 U.S.C. 148)	Multiple/Varies	Multiple/Varies	0		State Highway Agency	Systemic	Roadway Departure	
0141-01-057	Roadside	Roadside - other	14.964	Miles	\$399100	\$399100	HSIP (23 U.S.C. 148)	Multiple/Varies	Multiple/Varies	0		State Highway Agency	Spot	Roadway Departure	
0141-02-034	Roadside	Roadside - other	9.966	Miles	\$2321914	\$2321914	HSIP (23 U.S.C. 148)	Multiple/Varies	Multiple/Varies	0		State Highway Agency	Spot	Roadway Departure	
0143-03-051	Roadway	Roadway narrowing (road diet, roadway reconfiguration)	1.894	Miles	\$4914631	\$4914631	HSIP (23 U.S.C. 148)	Multiple/Varies	Multiple/Varies	0		State Highway Agency	Spot	Intersections	
0158-01-084	Roadside	Roadside - other	19.773	Miles	\$103076	\$103076	HSIP (23 U.S.C. 148)	Multiple/Varies	Multiple/Varies	0		State Highway Agency	Spot	Roadway Departure	
0158-02-090	Roadside	Roadside - other	15.561	Miles	\$393881	\$393881	HSIP (23 U.S.C. 148)	Multiple/Varies	Multiple/Varies	0		State Highway Agency	Spot	Roadway Departure	
0166-07-067	Intersection traffic control	Intersection flashers –sign-mounted or overhead	0.5	Miles	\$1239578	\$1239578	HSIP (23 U.S.C. 148)	Multiple/Varies	Multiple/Varies	0		State Highway Agency	Spot	Intersections	

2022 Texas Highway Safety Improvement Program

PROJECT NAME	IMPROVEMENT CATEGORY	SUBCATEGORY	OUTPUTS	OUTPUT TYPE	HSIP PROJECT COST(\$)	TOTAL PROJECT COST(\$)	FUNDING CATEGORY	LAND USE/AREA TYPE	FUNCTIONAL CLASSIFICATION	AADT	SPEED	OWNERSHIP	METHOD FOR SITE SELECTION	SHSP EMPHASIS AREA	SHSP STRATEGY
0167-01-126	Intersection geometry	Intersection realignment	0.327	Miles	\$1236922	\$1236922	HSIP (23 U.S.C. 148)	Multiple/Varies	Multiple/Varies	0		State Highway Agency	Spot	Intersections	
0167-01-132	Intersection traffic control	Modify traffic signal –other	0.2	Miles	\$506027	\$506027	HSIP (23 U.S.C. 148)	Multiple/Varies	Multiple/Varies	0		State Highway Agency	Spot	Intersections	
0169-03-039, 0169-04-039	Roadside	Barrier - other	14.636	Miles	\$705844	\$705844	HSIP (23 U.S.C. 148)	Multiple/Varies	Multiple/Varies	0		State Highway Agency	Systemic	Roadway Departure	
0169-03-040, 0169-04-040	Lighting	Continuous roadway lighting	14.636	Miles	\$1070935	\$1070935	HSIP (23 U.S.C. 148)	Multiple/Varies	Multiple/Varies	0		State Highway Agency	Spot	Roadway Departure	
0169-03-041, 0169-04-042	Intersection geometry	Add/modify auxiliary lanes	14.636	Miles	\$1922326	\$1922326	HSIP (23 U.S.C. 148)	Multiple/Varies	Multiple/Varies	0		State Highway Agency	Systemic	Intersections	
0172-01-054	Intersection traffic control	Modify traffic signal –other	0.2	Miles	\$365723	\$365723	HSIP (23 U.S.C. 148)	Multiple/Varies	Multiple/Varies	0		State Highway Agency	Spot	Pedestrians	
0172-04-048, 0172-05-126, 0172-13-007	Roadside	Barrier - other	13.497	Miles	\$3186711	\$3186711	HSIP (23 U.S.C. 148)	Multiple/Varies	Multiple/Varies	0		State Highway Agency	Spot	Roadway Departure	
0172-05-125, 0172-07-031, 0172-08-102	Roadside	Barrier - other	19.635	Miles	\$2840168	\$2840168	HSIP (23 U.S.C. 148)	Multiple/Varies	Multiple/Varies	0		State Highway Agency	Systemic	Roadway Departure	
0184-01-065	Intersection traffic control	Intersection flashers –sign-mounted or overhead	0.2	Miles	\$55776	\$55776	HSIP (23 U.S.C. 148)	Multiple/Varies	Multiple/Varies	0		State Highway Agency	Spot	Intersections	
0184-04-053	Roadside	Barrier - other	1.757	Miles	\$341861	\$341861	HSIP (23 U.S.C. 148)	Multiple/Varies	Multiple/Varies	0		State Highway Agency	Systemic	Roadway Departure	
0184-04-054	Roadside	Barrier - other	2.14	Miles	\$190948	\$190948	HSIP (23 U.S.C. 148)	Multiple/Varies	Multiple/Varies	0		State Highway Agency	Systemic	Roadway Departure	
0187-03-069	Intersection traffic control	Modify traffic signal –other	0.2	Miles	\$215778	\$215778	HSIP (23 U.S.C. 148)	Multiple/Varies	Multiple/Varies	0		State Highway Agency	Spot	Intersections	

2022 Texas Highway Safety Improvement Program

PROJECT NAME	IMPROVEMENT CATEGORY	SUBCATEGORY	OUTPUTS	OUTPUT TYPE	HSIP PROJECT COST(\$)	TOTAL PROJECT COST(\$)	FUNDING CATEGORY	LAND USE/AREA TYPE	FUNCTIONAL CLASSIFICATION	AADT	SPEED	OWNERSHIP	METHOD FOR SITE SELECTION	SHSP EMPHASIS AREA	SHSP STRATEGY
0190-05-074, 0190-08-013, 0165-01-108	Intersection traffic control	Modify traffic signal –other	2.89	Miles	\$1613198	\$1613198	HSIP (23 U.S.C. 148)	Multiple/Varies	Multiple/Varies	0		State Highway Agency	Systemic	Intersections	
0191-01-093	Intersection traffic control	Modify traffic signal –other	1	Intersections	\$394308	\$394308	HSIP (23 U.S.C. 148)	Multiple/Varies	Multiple/Varies	0		State Highway Agency	Spot	Intersections	
0195-03-102	Roadway	Pavement surface - other	1.518	Miles	\$855978	\$855978	HSIP (23 U.S.C. 148)	Multiple/Varies	Multiple/Varies	0		State Highway Agency	Spot	Roadway Departure	
0196-01-115, 0195-03-101	Roadway	Pavement surface - other	8.157	Miles	\$5221341	\$5221341	HSIP (23 U.S.C. 148)	Multiple/Varies	Multiple/Varies	0		State Highway Agency	Spot	Roadway Departure	
0204-07-055	Intersection traffic control	Intersection signing – add enhanced advance warning (double-up and/or oversize)	0.2	Miles	\$58150	\$58150	HSIP (23 U.S.C. 148)	Multiple/Varies	Multiple/Varies	0		State Highway Agency	Spot	Intersections	
0204-08-067	Lighting	Intersection lighting	0.2	Miles	\$30085	\$30085	HSIP (23 U.S.C. 148)	Multiple/Varies	Multiple/Varies	0		State Highway Agency	Spot	Intersections	
0205-02-069	Intersection traffic control	Intersection flashers –sign-mounted or overhead	0.4	Miles	\$102197	\$102197	HSIP (23 U.S.C. 148)	Multiple/Varies	Multiple/Varies	0		State Highway Agency	Spot	Intersections	
0209-03-051	Pedestrians and bicyclists	Pedestrian signal - other	0.4	Miles	\$78863	\$78863	HSIP (23 U.S.C. 148)	Multiple/Varies	Multiple/Varies	0		State Highway Agency	Spot	Pedestrians	
0212-04-048	Roadway	Roadway narrowing (road diet, roadway reconfiguration)	1	Miles	\$2388474	\$2388474	HSIP (23 U.S.C. 148)	Multiple/Varies	Multiple/Varies	0		State Highway Agency	Spot	Intersections	
0215-01-055	Intersection traffic control	Modify traffic signal –other	0.2	Miles	\$307555	\$307555	HSIP (23 U.S.C. 148)	Multiple/Varies	Multiple/Varies	0		State Highway Agency	Spot	Intersections	
0218-04-122	Roadside	Barrier - other	2.209	Miles	\$299386	\$299386	HSIP (23 U.S.C. 148)	Multiple/Varies	Multiple/Varies	0		State Highway Agency	Systemic	Roadway Departure	
0220-07-067	Lighting	Continuous roadway lighting	0.331	Miles	\$126791	\$126791	HSIP (23 U.S.C. 148)	Multiple/Varies	Multiple/Varies	0		State Highway Agency	Spot	Roadway Departure	

2022 Texas Highway Safety Improvement Program

PROJECT NAME	IMPROVEMENT CATEGORY	SUBCATEGORY	OUTPUTS	OUTPUT TYPE	HSIP PROJECT COST(\$)	TOTAL PROJECT COST(\$)	FUNDING CATEGORY	LAND USE/AREA TYPE	FUNCTIONAL CLASSIFICATION	AADT	SPEED	OWNERSHIP	METHOD FOR SITE SELECTION	SHSP EMPHASIS AREA	SHSP STRATEGY
0231-16-035	Roadside	Roadside - other	4.228	Miles	\$2099782	\$2099782	HSIP (23 U.S.C. 148)	Multiple/Varies	Multiple/Varies	0		State Highway Agency	Spot	Roadway Departure	
0238-03-065	Intersection traffic control	Modify traffic signal –other	0.2	Miles	\$486529	\$486529	HSIP (23 U.S.C. 148)	Multiple/Varies	Multiple/Varies	0		State Highway Agency	Spot	Intersections	
0245-06-087	Intersection geometry	Add/modify auxiliary lanes	0.266	Miles	\$2212747	\$2212747	HSIP (23 U.S.C. 148)	Multiple/Varies	Multiple/Varies	0		State Highway Agency	Spot	Intersections	
0250-01-038	Intersection traffic control	Intersection flashers –sign-mounted or overhead	0.3	Miles	\$201205	\$201205	HSIP (23 U.S.C. 148)	Multiple/Varies	Multiple/Varies	0		State Highway Agency	Spot	Intersections	
0255-01-094	Intersection traffic control	Intersection flashers –sign-mounted or overhead	1	Miles	\$157761	\$157761	HSIP (23 U.S.C. 148)	Multiple/Varies	Multiple/Varies	0		State Highway Agency	Spot	Intersections	
0255-07-147	Intersection traffic control	Modify traffic signal –other	0.2	Miles	\$156411	\$156411	HSIP (23 U.S.C. 148)	Multiple/Varies	Multiple/Varies	0		State Highway Agency	Spot	Intersections	
0255-09-104	Intersection traffic control	Modify traffic signal –other	0.2	Miles	\$149515	\$149515	HSIP (23 U.S.C. 148)	Multiple/Varies	Multiple/Varies	0		State Highway Agency	Spot	Intersections	
0258-08-037, 0258-09-153	Lighting	Continuous roadway lighting	6.625	Miles	\$770035	\$770035	HSIP (23 U.S.C. 148)	Multiple/Varies	Multiple/Varies	0		State Highway Agency	Spot	Roadway Departure	
0271-14-239	Intersection traffic control	Modify traffic signal –other	0.2	Miles	\$539001	\$539001	HSIP (23 U.S.C. 148)	Multiple/Varies	Multiple/Varies	0		State Highway Agency	Spot	Intersections	
0272-05-033	Roadway	Roadway widening - add lane(s) along segment	10.855	Miles	\$6407281	\$6407281	HSIP (23 U.S.C. 148)	Multiple/Varies	Multiple/Varies	0		State Highway Agency	Spot	Roadway Departure	
0273-04-046, 0276-04-047	Roadway	Roadway narrowing (road diet, roadway reconfiguration)	3.397	Miles	\$6654422	\$6654422	HSIP (23 U.S.C. 148)	Multiple/Varies	Multiple/Varies	0		State Highway Agency	Spot	Roadway Departure	
0281-02-075	Intersection traffic control	Modify traffic signal –other	0.2	Miles	\$511725	\$511725	HSIP (23 U.S.C. 148)	Multiple/Varies	Multiple/Varies	0		State Highway Agency	Spot	Intersections	
0285-03-062	Roadway	Roadway narrowing (road	2.861	Miles	\$5143343	\$5143343	HSIP (23 U.S.C. 148)	Multiple/Varies	Multiple/Varies	0		State Highway Agency	Systemic	Intersections	

2022 Texas Highway Safety Improvement Program

PROJECT NAME	IMPROVEMENT CATEGORY	SUBCATEGORY	OUTPUTS	OUTPUT TYPE	HSIP PROJECT COST(\$)	TOTAL PROJECT COST(\$)	FUNDING CATEGORY	LAND USE/AREA TYPE	FUNCTIONAL CLASSIFICATION	AADT	SPEED	OWNERSHIP	METHOD FOR SITE SELECTION	SHSP EMPHASIS AREA	SHSP STRATEGY
		diet, roadway reconfiguration)													
0291-01-052	Roadway	Superelevation / cross slope	1.3	Miles	\$920831	\$920831	HSIP (23 U.S.C. 148)	Multiple/Varies	Multiple/Varies	0		State Highway Agency	Spot	Roadway Departure	
0291-03-076	Intersection traffic control	Modify traffic signal –other	0.2	Miles	\$283894	\$283894	HSIP (23 U.S.C. 148)	Multiple/Varies	Multiple/Varies	0		State Highway Agency	Spot	Intersections	
0291-04-027	Roadway signs and traffic control	Curve-related warning signs and flashers	2.795	Miles	\$234855	\$234855	HSIP (23 U.S.C. 148)	Multiple/Varies	Multiple/Varies	0		State Highway Agency	Spot	Roadway Departure	
0291-06-059	Roadway delineation	Raised pavement markers	7.6	Miles	\$192439	\$192439	HSIP (23 U.S.C. 148)	Multiple/Varies	Multiple/Varies	0		State Highway Agency	Spot	Roadway Departure	
0291-08-026	Roadway delineation	Raised pavement markers	1.93	Miles	\$86546	\$86546	HSIP (23 U.S.C. 148)	Multiple/Varies	Multiple/Varies	0		State Highway Agency	Spot	Roadway Departure	
0291-10-116, 0291-09-131	Roadside	Barrier - other	3.253	Miles	\$146706	\$146706	HSIP (23 U.S.C. 148)	Multiple/Varies	Multiple/Varies	0		State Highway Agency	Systemic	Roadway Departure	
0291-11-022	Roadway signs and traffic control	Curve-related warning signs and flashers	0.25	Miles	\$22248	\$22248	HSIP (23 U.S.C. 148)	Multiple/Varies	Multiple/Varies	0		State Highway Agency	Spot	Roadway Departure	
0304-01-032	Roadway delineation	Raised pavement markers	12.178	Miles	\$121526	\$121526	HSIP (23 U.S.C. 148)	Multiple/Varies	Multiple/Varies	0		State Highway Agency	Spot	Roadway Departure	
0315-06-049	Lighting	Continuous roadway lighting	0.2	Miles	\$42467	\$42467	HSIP (23 U.S.C. 148)	Multiple/Varies	Multiple/Varies	0		State Highway Agency	Spot	Roadway Departure	
0320-01-078	Pedestrians and bicyclists	Pedestrians and bicyclists – other	0.339	Miles	\$388376	\$388376	HSIP (23 U.S.C. 148)	Multiple/Varies	Multiple/Varies	0		State Highway Agency	Spot	Pedestrians	
0320-06-009	Roadside	Barrier - other	0.2	Miles	\$53749	\$53749	HSIP (23 U.S.C. 148)	Multiple/Varies	Multiple/Varies	0		State Highway Agency	Systemic	Roadway Departure	
0326-03-105	Roadside	Roadside - other	0.511	Miles	\$706534	\$706534	HSIP (23 U.S.C. 148)	Multiple/Varies	Multiple/Varies	0		State Highway Agency	Spot	Roadway Departure	
0336-03-072	Roadside	Roadside - other	11.919	Miles	\$2012285	\$2012285	HSIP (23 U.S.C. 148)	Multiple/Varies	Multiple/Varies	0		State Highway Agency	Spot	Roadway Departure	

2022 Texas Highway Safety Improvement Program

PROJECT NAME	IMPROVEMENT CATEGORY	SUBCATEGORY	OUTPUTS	OUTPUT TYPE	HSIP PROJECT COST(\$)	TOTAL PROJECT COST(\$)	FUNDING CATEGORY	LAND USE/AREA TYPE	FUNCTIONAL CLASSIFICATION	AADT	SPEED	OWNERSHIP	METHOD FOR SITE SELECTION	SHSP EMPHASIS AREA	SHSP STRATEGY
0337-01-050	Roadway delineation	Raised pavement markers	10.134	Miles	\$57268	\$57268	HSIP (23 U.S.C. 148)	Multiple/Varies	Multiple/Varies	0		State Highway Agency	Spot	Roadway Departure	
0337-03-019	Intersection traffic control	Intersection flashers –sign-mounted or overhead	0.1	Miles	\$146511	\$146511	HSIP (23 U.S.C. 148)	Multiple/Varies	Multiple/Varies	0		State Highway Agency	Spot	Intersections	
0353-01-027	Roadside	Barrier - other	4.133	Miles	\$927079	\$927079	HSIP (23 U.S.C. 148)	Multiple/Varies	Multiple/Varies	0		State Highway Agency	Systemic	Roadway Departure	
0353-04-109	Intersection traffic control	Modify traffic signal –other	0.2	Miles	\$436377	\$436377	HSIP (23 U.S.C. 148)	Multiple/Varies	Multiple/Varies	0		State Highway Agency	Spot	Intersections	
0354-06-030	Interchange design	Convert at-grade intersection to interchange	0.2	Miles	\$36941467	\$36941467	HSIP (23 U.S.C. 148)	Multiple/Varies	Multiple/Varies	0		State Highway Agency	Spot	Intersections	
0379-03-026	Intersection geometry	Intersection realignment	0.5	Miles	\$2861869	\$2861869	HSIP (23 U.S.C. 148)	Multiple/Varies	Multiple/Varies	0		State Highway Agency	Spot	Intersections	
0380-09-097	Intersection traffic control	Modify control – new traffic signal	0.4	Miles	\$267192	\$267192	HSIP (23 U.S.C. 148)	Multiple/Varies	Multiple/Varies	0		State Highway Agency	Spot	Intersections	
0382-01-047, 0382-02-038	Roadside	Roadside - other	11.501	Miles	\$1182090	\$1182090	HSIP (23 U.S.C. 148)	Multiple/Varies	Multiple/Varies	0		State Highway Agency	Spot	Roadway Departure	
0391-04-030, 0391-05-021	Roadway delineation	Raised pavement markers	3.972	Miles	\$2539780	\$2539780	HSIP (23 U.S.C. 148)	Multiple/Varies	Multiple/Varies	0		State Highway Agency	Systemic	Roadway Departure	
0391-05-022	Roadway delineation	Raised pavement markers	1.195	Miles	\$892646	\$892646	HSIP (23 U.S.C. 148)	Multiple/Varies	Multiple/Varies	0		State Highway Agency	Spot	Roadway Departure	
0392-02-101	Roadside	Barrier - other	3.348	Miles	\$546015	\$546015	HSIP (23 U.S.C. 148)	Multiple/Varies	Multiple/Varies	0		State Highway Agency	Systemic	Roadway Departure	
0392-08-023	Intersection traffic control	Modify traffic signal –other	0.6	Miles	\$324124	\$324124	HSIP (23 U.S.C. 148)	Multiple/Varies	Multiple/Varies	0		State Highway Agency	Spot	Pedestrians	
0396-05-021	Roadside	Roadside - other	20.807	Miles	\$1018098	\$1018098	HSIP (23 U.S.C. 148)	Multiple/Varies	Multiple/Varies	0		State Highway Agency	Spot	Roadway Departure	



2022 Texas Highway Safety Improvement Program

PROJECT NAME	IMPROVEMENT CATEGORY	SUBCATEGORY	OUTPUTS	OUTPUT TYPE	HSIP PROJECT COST(\$)	TOTAL PROJECT COST(\$)	FUNDING CATEGORY	LAND USE/AREA TYPE	FUNCTIONAL CLASSIFICATION	AADT	SPEED	OWNERSHIP	METHOD FOR SITE SELECTION	SHSP EMPHASIS AREA	SHSP STRATEGY
0412-04-030	Roadside	Roadside - other	31.387	Miles	\$665431	\$665431	HSIP (23 U.S.C. 148)	Multiple/Varies	Multiple/Varies	0		State Highway Agency	Spot	Roadway Departure	
0420-02-051, 0420-03-017	Roadway	Roadway widening - travel lanes	2.955	Miles	\$2882696	\$2882696	HSIP (23 U.S.C. 148)	Multiple/Varies	Multiple/Varies	0		State Highway Agency	Systemic	Roadway Departure	
0446-01-053	Roadside	Roadside - other	5.543	Miles	\$2405805	\$2405805	HSIP (23 U.S.C. 148)	Multiple/Varies	Multiple/Varies	0		State Highway Agency	Spot	Roadway Departure	
0454-01-047	Roadside	Roadside - other	14.648	Miles	\$638320	\$638320	HSIP (23 U.S.C. 148)	Multiple/Varies	Multiple/Varies	0		State Highway Agency	Spot	Roadway Departure	
0463-06-037	Intersection traffic control	Modify control – new traffic signal			\$186782	\$186782	HSIP (23 U.S.C. 148)	Multiple/Varies	Multiple/Varies	0		State Highway Agency	Spot	Intersections	
0495-08-136	Roadway	Pavement surface - other	16.815	Miles	\$1544511	\$1544511	HSIP (23 U.S.C. 148)	Multiple/Varies	Multiple/Varies	0		State Highway Agency	Spot	Roadway Departure	
0495-10-102	Roadside	Barrier - other	3.929	Miles	\$808760	\$808760	HSIP (23 U.S.C. 148)	Multiple/Varies	Multiple/Varies	0		State Highway Agency	Systemic	Roadway Departure	
0508-02-131	Lighting	Continuous roadway lighting	1.28	Miles	\$1374196	\$1374196	HSIP (23 U.S.C. 148)	Multiple/Varies	Multiple/Varies	0		State Highway Agency	Spot	Roadway Departure	
0508-04-182	Intersection geometry	Intersection geometry - other	18.911	Miles	\$156016	\$156016	HSIP (23 U.S.C. 148)	Multiple/Varies	Multiple/Varies	0		State Highway Agency	Spot	Intersections	
0521-01-055	Intersection traffic control	Modify traffic signal –other	0.2	Miles	\$541940	\$541940	HSIP (23 U.S.C. 148)	Multiple/Varies	Multiple/Varies	0		State Highway Agency	Spot	Intersections	
0521-02-041	Pedestrians and bicyclists	Pedestrians and bicyclists – other	0.313	Miles	\$222632	\$222632	HSIP (23 U.S.C. 148)	Multiple/Varies	Multiple/Varies	0		State Highway Agency	Spot	Pedestrians	
0521-06-150	Intersection traffic control	Modify traffic signal –other	0.2	Miles	\$298164	\$298164	HSIP (23 U.S.C. 148)	Multiple/Varies	Multiple/Varies	0		State Highway Agency	Spot	Intersections	
0523-10-047	Pedestrians and bicyclists	Pedestrians and bicyclists – other	12.435	Miles	\$6922413	\$6922413	HSIP (23 U.S.C. 148)	Multiple/Varies	Multiple/Varies	0		State Highway Agency	Spot	Roadway Departure	
0540-03-035	Intersection traffic control	Intersection signing – add enhanced	1	Miles	\$109508	\$109508	HSIP (23 U.S.C. 148)	Multiple/Varies	Multiple/Varies	0		State Highway Agency	Spot	Intersections	

2022 Texas Highway Safety Improvement Program

PROJECT NAME	IMPROVEMENT CATEGORY	SUBCATEGORY	OUTPUTS	OUTPUT TYPE	HSIP PROJECT COST(\$)	TOTAL PROJECT COST(\$)	FUNDING CATEGORY	LAND USE/AREA TYPE	FUNCTIONAL CLASSIFICATION	AADT	SPEED	OWNERSHIP	METHOD FOR SITE SELECTION	SHSP EMPHASIS AREA	SHSP STRATEGY
		advance warning (double-up and/or oversize)													
0555-05-026	Roadside	Roadside - other	12.812	Miles	\$279150	\$279150	HSIP (23 U.S.C. 148)	Multiple/Varies	Multiple/Varies	0		State Highway Agency	Spot	Roadway Departure	
0558-03-027	Intersection geometry	Add/modify auxiliary lanes			\$271239	\$271239	HSIP (23 U.S.C. 148)	Multiple/Varies	Multiple/Varies	0		State Highway Agency	Systemic	Roadway Departure	
0558-10-038	Roadside	Roadside - other	16.798	Miles	\$256722	\$256722	HSIP (23 U.S.C. 148)	Multiple/Varies	Multiple/Varies	0		State Highway Agency	Spot	Roadway Departure	
0572-01-072	Roadside	Barrier - other	12.725	Miles	\$2334519	\$2334519	HSIP (23 U.S.C. 148)	Multiple/Varies	Multiple/Varies	0		State Highway Agency	Systemic	Roadway Departure	
0590-01-028	Roadside	Roadside - other	5.712	Miles	\$658653	\$658653	HSIP (23 U.S.C. 148)	Multiple/Varies	Multiple/Varies	0		State Highway Agency	Spot	Roadway Departure	
0619-03-064	Intersection traffic control	Modify traffic signal –other	0.2	Miles	\$608941	\$608941	HSIP (23 U.S.C. 148)	Multiple/Varies	Multiple/Varies	0		State Highway Agency	Spot	Intersections	
0643-04-037	Roadway signs and traffic control	Curve-related warning signs and flashers	1	Miles	\$41635	\$41635	HSIP (23 U.S.C. 148)	Multiple/Varies	Multiple/Varies	0		State Highway Agency	Spot	Roadway Departure	
0643-05-062	Roadway signs and traffic control	Curve-related warning signs and flashers	0.4	Miles	\$18733	\$18733	HSIP (23 U.S.C. 148)	Multiple/Varies	Multiple/Varies	0		State Highway Agency	Spot	Roadway Departure	
0674-01-071	Intersection traffic control	Modify traffic signal –other	0.2	Miles	\$491269	\$491269	HSIP (23 U.S.C. 148)	Multiple/Varies	Multiple/Varies	0		State Highway Agency	Spot	Intersections	
0678-02-041	Roadway signs and traffic control	Curve-related warning signs and flashers	21.95	Miles	\$496300	\$496300	HSIP (23 U.S.C. 148)	Multiple/Varies	Multiple/Varies	0		State Highway Agency	Spot	Roadway Departure	
0697-04-019	Roadway signs and traffic control	Curve-related warning signs and flashers	7.601	Miles	\$98504	\$98504	HSIP (23 U.S.C. 148)	Multiple/Varies	Multiple/Varies	0		State Highway Agency	Spot	Roadway Departure	
0706-04-005	Roadway delineation	Raised pavement markers	10.89	Miles	\$110198	\$110198	HSIP (23 U.S.C. 148)	Multiple/Varies	Multiple/Varies	0		State Highway Agency	Spot	Roadway Departure	
0708-01-032	Roadside	Roadside - other	7.118	Miles	\$413274	\$413274	HSIP (23 U.S.C. 148)	Multiple/Varies	Multiple/Varies	0		State Highway Agency	Spot	Roadway Departure	

2022 Texas Highway Safety Improvement Program

PROJECT NAME	IMPROVEMENT CATEGORY	SUBCATEGORY	OUTPUTS	OUTPUT TYPE	HSIP PROJECT COST(\$)	TOTAL PROJECT COST(\$)	FUNDING CATEGORY	LAND USE/AREA TYPE	FUNCTIONAL CLASSIFICATION	AADT	SPEED	OWNERSHIP	METHOD FOR SITE SELECTION	SHSP EMPHASIS AREA	SHSP STRATEGY
0720-06-002	Intersection traffic control	Modify traffic signal –other	0.2	Miles	\$375697	\$375697	HSIP (23 U.S.C. 148)	Multiple/Varies	Multiple/Varies	0		State Highway Agency	Spot	Intersections	
0722-02-046	Roadside	Roadside - other	9.544	Miles	\$342810	\$342810	HSIP (23 U.S.C. 148)	Multiple/Varies	Multiple/Varies	0		State Highway Agency	Spot	Roadway Departure	
0724-01-056	Interchange design	Convert at-grade intersection to interchange	1	Miles	\$10787640	\$10787640	HSIP (23 U.S.C. 148)	Multiple/Varies	Multiple/Varies	0		State Highway Agency	Spot	Intersections	
0747-04-078	Intersection traffic control	Modify control – new traffic signal	0.200	Miles	\$424483	\$424483	HSIP (23 U.S.C. 148)	Multiple/Varies	Multiple/Varies	0		State Highway Agency	Spot	Intersections	
0747-05-047	Roadway signs and traffic control	Curve-related warning signs and flashers	8.787	Miles	\$644845	\$644845	HSIP (23 U.S.C. 148)	Multiple/Varies	Multiple/Varies	0		State Highway Agency	Spot	Roadway Departure	
0772-01-034	Pedestrians and bicyclists	Pedestrian signal - other	0.53	Miles	\$877137	\$877137	HSIP (23 U.S.C. 148)	Multiple/Varies	Multiple/Varies	0		State Highway Agency	Systemic	Pedestrians	
0836-02-078	Intersection traffic control	Modify traffic signal –other	0.4	Miles	\$724468	\$724468	HSIP (23 U.S.C. 148)	Multiple/Varies	Multiple/Varies	0		State Highway Agency	Spot	Intersections	
0849-01-053, 0849-02-043	Interchange design	Convert at-grade intersection to interchange	0.963	Miles	\$13351007	\$13351007	HSIP (23 U.S.C. 148)	Multiple/Varies	Multiple/Varies	0		State Highway Agency	Spot	Intersections	
0861-01-068	Shoulder treatments	Pave existing shoulders	2.997	Miles	\$3910866	\$3910866	HSIP (23 U.S.C. 148)	Multiple/Varies	Multiple/Varies	0		State Highway Agency	Spot	Roadway Departure	
0862-01-065	Intersection traffic control	Modify traffic signal –other	0.2	Miles	\$99644	\$99644	HSIP (23 U.S.C. 148)	Multiple/Varies	Multiple/Varies	0		State Highway Agency	Spot	Intersections	
0863-03-039	Intersection traffic control	Modify traffic signal –other	0.2	Miles	\$102627	\$102627	HSIP (23 U.S.C. 148)	Multiple/Varies	Multiple/Varies	0		State Highway Agency	Spot	Intersections	
0863-03-040	Lighting	Continuous roadway lighting	0.420	Miles	\$122991	\$122991	HSIP (23 U.S.C. 148)	Multiple/Varies	Multiple/Varies	0		State Highway Agency	Spot	Roadway Departure	
0874-03-016	Roadside	Roadside - other	17.626	Miles	\$1049671	\$1049671	HSIP (23 U.S.C. 148)	Multiple/Varies	Multiple/Varies	0		State Highway Agency	Spot	Roadway Departure	
0902-90-119	Intersection traffic control	Modify traffic signal –other	0.2	Miles	\$1622142	\$1622142	HSIP (23 U.S.C. 148)	Multiple/Varies	Multiple/Varies	0		City or Municipal	Spot	Pedestrians	

2022 Texas Highway Safety Improvement Program

PROJECT NAME	IMPROVEMENT CATEGORY	SUBCATEGORY	OUTPUTS	OUTPUT TYPE	HSIP PROJECT COST(\$)	TOTAL PROJECT COST(\$)	FUNDING CATEGORY	LAND USE/AREA TYPE	FUNCTIONAL CLASSIFICATION	AADT	SPEED	OWNERSHIP	METHOD FOR SITE SELECTION	SHSP EMPHASIS AREA	SHSP STRATEGY
												Highway Agency			
0902-90-253	Intersection traffic control	Modify traffic signal –other	0.15	Miles	\$912608	\$912608	HSIP (23 U.S.C. 148)	Multiple/Varies	Multiple/Varies	0		City or Municipal Highway Agency	Spot	Intersections	
0904-00-212	Intersection traffic control	Modify traffic signal –other	4	Intersections	\$317821	\$317821	HSIP (23 U.S.C. 148)	Multiple/Varies	Multiple/Varies	0		City or Municipal Highway Agency	Systemic	Intersections	
0906-32-059	Intersection geometry	Innovative Intersection (e.g. MUT, RCUT, QR)			\$440297	\$440297	HSIP (23 U.S.C. 148)	Multiple/Varies	Multiple/Varies	0		City or Municipal Highway Agency	Spot	Intersections	
0908-33-105	Intersection traffic control	Modify traffic signal timing – signal coordination	2.029	Miles	\$132701	\$132701	HSIP (23 U.S.C. 148)	Multiple/Varies	Multiple/Varies	0		City or Municipal Highway Agency	Spot	Intersections	
0909-00-051	Intersection traffic control	Modify traffic signal – add backplates with retroreflective borders			\$469340	\$469340	HSIP (23 U.S.C. 148)	Multiple/Varies	Multiple/Varies	0		State Highway Agency	Systemic	Intersections	
0909-22-188	Intersection traffic control	Modify traffic signal –other	0.3	Miles	\$257474	\$257474	HSIP (23 U.S.C. 148)	Multiple/Varies	Multiple/Varies	0		City or Municipal Highway Agency	Spot	Pedestrians	
0909-22-189	Intersection traffic control	Modify control – new traffic signal	0.2	Miles	\$190836	\$190836	HSIP (23 U.S.C. 148)	Multiple/Varies	Multiple/Varies	0		City or Municipal Highway Agency	Spot	Intersections	
0910-07-083	Roadway signs and traffic control	Curve-related warning signs and flashers			\$113740	\$113740	HSIP (23 U.S.C. 148)	Multiple/Varies	Multiple/Varies	0		City or Municipal Highway Agency	Systemic	Roadway Departure	
0910-08-081	Roadway signs and traffic control	Curve-related warning signs and flashers			\$340109	\$340109	HSIP (23 U.S.C. 148)	Multiple/Varies	Multiple/Varies	0		State Highway Agency	Systemic	Roadway Departure	
0910-16-165	Intersection traffic control	Modify traffic signal –other	0.46	Miles	\$240589	\$240589	HSIP (23 U.S.C. 148)	Multiple/Varies	Multiple/Varies	0		City or Municipal Highway Agency	Spot	Intersections	

2022 Texas Highway Safety Improvement Program

PROJECT NAME	IMPROVEMENT CATEGORY	SUBCATEGORY	OUTPUTS	OUTPUT TYPE	HSIP PROJECT COST(\$)	TOTAL PROJECT COST(\$)	FUNDING CATEGORY	LAND USE/AREA TYPE	FUNCTIONAL CLASSIFICATION	AADT	SPEED	OWNERSHIP	METHOD FOR SITE SELECTION	SHSP EMPHASIS AREA	SHSP STRATEGY
0910-34-034	Roadway signs and traffic control	Curve-related warning signs and flashers			\$416986	\$416986	HSIP (23 U.S.C. 148)	Multiple/Varies	Multiple/Varies	0		State Highway Agency	Systemic	Roadway Departure	
0912-00-628	Intersection traffic control	Modify traffic signal –other			\$2565034	\$2565034	HSIP (23 U.S.C. 148)	Multiple/Varies	Multiple/Varies	0		State Highway Agency	Systemic	Intersections	
0913-27-089	Intersection traffic control	Intersection signing – add enhanced advance warning (double-up and/or oversize)			\$63574	\$63574	HSIP (23 U.S.C. 148)	Multiple/Varies	Multiple/Varies	0		City or Municipal Highway Agency	Spot	Intersections	
0914-04-332	Intersection traffic control	Modify control – new traffic signal	0.2	Miles	\$279311	\$279311	HSIP (23 U.S.C. 148)	Multiple/Varies	Multiple/Varies	0		City or Municipal Highway Agency	Spot	Intersections	
0914-04-335	Lighting	Continuous roadway lighting	8.00	Miles	\$1096861	\$1096861	HSIP (23 U.S.C. 148)	Multiple/Varies	Multiple/Varies	0		City or Municipal Highway Agency	Spot	Roadway Departure	
0915-12-624	Intersection traffic control	Modify traffic signal –other	0.2	Miles	\$248637	\$248637	HSIP (23 U.S.C. 148)	Multiple/Varies	Multiple/Varies	0		City or Municipal Highway Agency	Spot	Intersections	
0915-12-626	Intersection traffic control	Modify traffic signal –other	0.2	Miles	\$253395	\$253395	HSIP (23 U.S.C. 148)	Multiple/Varies	Multiple/Varies	0		City or Municipal Highway Agency	Spot	Intersections	
0915-12-637	Intersection traffic control	Modify traffic signal –other	0.2	Miles	\$241732	\$241732	HSIP (23 U.S.C. 148)	Multiple/Varies	Multiple/Varies	0		City or Municipal Highway Agency	Spot	Intersections	
0915-12-638	Intersection traffic control	Modify traffic signal –other	0.2	Miles	\$231463	\$231463	HSIP (23 U.S.C. 148)	Multiple/Varies	Multiple/Varies	0		City or Municipal Highway Agency	Spot	Intersections	
0915-12-639	Intersection traffic control	Modify traffic signal –other	0.2	Miles	\$269158	\$269158	HSIP (23 U.S.C. 148)	Multiple/Varies	Multiple/Varies	0		City or Municipal Highway Agency	Spot	Intersections	
0915-12-641	Intersection traffic control	Modify traffic signal –other	0.2	Miles	\$217490	\$217490	HSIP (23 U.S.C. 148)	Multiple/Varies	Multiple/Varies	0		City or Municipal Highway Agency	Spot	Intersections	

2022 Texas Highway Safety Improvement Program

PROJECT NAME	IMPROVEMENT CATEGORY	SUBCATEGORY	OUTPUTS	OUTPUT TYPE	HSIP PROJECT COST(\$)	TOTAL PROJECT COST(\$)	FUNDING CATEGORY	LAND USE/AREA TYPE	FUNCTIONAL CLASSIFICATION	AADT	SPEED	OWNERSHIP	METHOD FOR SITE SELECTION	SHSP EMPHASIS AREA	SHSP STRATEGY
0915-12-642	Intersection traffic control	Modify traffic signal –other	0.2	Miles	\$237095	\$237095	HSIP (23 U.S.C. 148)	Multiple/Varies	Multiple/Varies	0		City or Municipal Highway Agency	Spot	Intersections	
0915-12-651	Intersection traffic control	Intersection flashers –sign-mounted or overhead	0.2	Miles	\$93185	\$93185	HSIP (23 U.S.C. 148)	Multiple/Varies	Multiple/Varies	0		City or Municipal Highway Agency	Spot	Intersections	
0915-12-655	Intersection traffic control	Modify traffic signal –other	0.2	Miles	\$238449	\$238449	HSIP (23 U.S.C. 148)	Multiple/Varies	Multiple/Varies	0		City or Municipal Highway Agency	Spot	Intersections	
0915-12-693	Intersection traffic control	Modify traffic signal –other	0.2	Miles	\$248246	\$248246	HSIP (23 U.S.C. 148)	Multiple/Varies	Multiple/Varies	0		City or Municipal Highway Agency	Spot	Intersections	
0915-12-694	Roadway delineation	Raised pavement markers	7.32	Miles	\$250802	\$250802	HSIP (23 U.S.C. 148)	Multiple/Varies	Multiple/Varies	0		City or Municipal Highway Agency	Spot	Roadway Departure	
0915-12-699	Intersection traffic control	Modify control – new traffic signal	0.2	Miles	\$168126	\$168126	HSIP (23 U.S.C. 148)	Multiple/Varies	Multiple/Varies	0		City or Municipal Highway Agency	Spot	Intersections	
0915-12-700	Intersection traffic control	Modify traffic signal –other	0.2	Miles	\$47436	\$47436	HSIP (23 U.S.C. 148)	Multiple/Varies	Multiple/Varies	0		City or Municipal Highway Agency	Spot	Intersections	
0915-12-701	Intersection traffic control	Modify traffic signal –other	0.2	Miles	\$62188	\$62188	HSIP (23 U.S.C. 148)	Multiple/Varies	Multiple/Varies	0		City or Municipal Highway Agency	Spot	Intersections	
0915-12-703	Intersection traffic control	Modify control – new traffic signal	0.2	Miles	\$259218	\$259218	HSIP (23 U.S.C. 148)	Multiple/Varies	Multiple/Varies	0		City or Municipal Highway Agency	Spot	Intersections	
0915-12-706	Intersection traffic control	Modify traffic signal –other	0.2	Miles	\$47290	\$47290	HSIP (23 U.S.C. 148)	Multiple/Varies	Multiple/Varies	0		City or Municipal Highway Agency	Spot	Intersections	
0915-12-713	Intersection traffic control	Intersection signing – add enhanced advance warning	0.317	Miles	\$138668	\$138668	HSIP (23 U.S.C. 148)	Multiple/Varies	Multiple/Varies	0		City or Municipal Highway Agency	Spot	Roadway Departure	

2022 Texas Highway Safety Improvement Program

PROJECT NAME	IMPROVEMENT CATEGORY	SUBCATEGORY	OUTPUTS	OUTPUT TYPE	HSIP PROJECT COST(\$)	TOTAL PROJECT COST(\$)	FUNDING CATEGORY	LAND USE/AREA TYPE	FUNCTIONAL CLASSIFICATION	AADT	SPEED	OWNERSHIP	METHOD FOR SITE SELECTION	SHSP EMPHASIS AREA	SHSP STRATEGY
		(double-up and/or oversize)													
0915-12-717	Intersection traffic control	Intersection signing – add enhanced advance warning (double-up and/or oversize)	3.011	Miles	\$589550	\$589550	HSIP (23 U.S.C. 148)	Multiple/Varies	Multiple/Varies	0		City or Municipal Highway Agency	Spot	Roadway Departure	
0915-12-718	Intersection traffic control	Modify traffic signal –other	0.2	Miles	\$194018	\$194018	HSIP (23 U.S.C. 148)	Multiple/Varies	Multiple/Varies	0		City or Municipal Highway Agency	Spot	Intersections	
0915-17-072	Roadway	Roadway narrowing (road diet, roadway reconfiguration)	0.104	Miles	\$1354087	\$1354087	HSIP (23 U.S.C. 148)	Multiple/Varies	Multiple/Varies	0		City or Municipal Highway Agency	Spot	Roadway Departure	
0915-17-073	Intersection traffic control	Intersection signing – add enhanced advance warning (double-up and/or oversize)	0.2	Miles	\$54365	\$54365	HSIP (23 U.S.C. 148)	Multiple/Varies	Multiple/Varies	0		City or Municipal Highway Agency	Spot	Intersections	
0915-17-074	Intersection traffic control	Modify traffic signal –other	0.2	Miles	\$202511	\$202511	HSIP (23 U.S.C. 148)	Multiple/Varies	Multiple/Varies	0		City or Municipal Highway Agency	Spot	Intersections	
0915-17-075	Intersection traffic control	Modify control – new traffic signal	0.2	Miles	\$317481	\$317481	HSIP (23 U.S.C. 148)	Multiple/Varies	Multiple/Varies	0		City or Municipal Highway Agency	Spot	Intersections	
0916-28-084	Intersection traffic control	Intersection signing – add enhanced advance warning (double-up and/or oversize)	0.01	Miles	\$4680	\$4680	HSIP (23 U.S.C. 148)	Multiple/Varies	Multiple/Varies	0		City or Municipal Highway Agency	Spot	Intersections	
0916-28-085	Intersection traffic control	Intersection signing – add enhanced advance warning (double-up and/or oversize)	0.01	Miles	\$8718	\$8718	HSIP (23 U.S.C. 148)	Multiple/Varies	Multiple/Varies	0		City or Municipal Highway Agency	Spot	Intersections	
0916-28-086	Intersection traffic control	Intersection signing – add enhanced advance warning	0.01	Miles	\$8750	\$8750	HSIP (23 U.S.C. 148)	Multiple/Varies	Multiple/Varies	0		City or Municipal Highway Agency	Spot	Intersections	

2022 Texas Highway Safety Improvement Program

PROJECT NAME	IMPROVEMENT CATEGORY	SUBCATEGORY	OUTPUTS	OUTPUT TYPE	HSIP PROJECT COST(\$)	TOTAL PROJECT COST(\$)	FUNDING CATEGORY	LAND USE/AREA TYPE	FUNCTIONAL CLASSIFICATION	AADT	SPEED	OWNERSHIP	METHOD FOR SITE SELECTION	SHSP EMPHASIS AREA	SHSP STRATEGY
		(double-up and/or oversize)													
0916-35-233	Intersection traffic control	Intersection signing – add enhanced advance warning (double-up and/or oversize)	1800	Feet	\$32484	\$32484	HSIP (23 U.S.C. 148)	Multiple/Varies	Multiple/Varies	0		City or Municipal Highway Agency	Systemic	Intersections	
0916-35-234	Intersection traffic control	Intersection signing – add enhanced advance warning (double-up and/or oversize)	900	Feet	\$14272	\$14272	HSIP (23 U.S.C. 148)	Multiple/Varies	Multiple/Varies	0		City or Municipal Highway Agency	Systemic	Intersections	
0916-35-235	Roadway signs and traffic control	Curve-related warning signs and flashers	850	Feet	\$10270	\$10270	HSIP (23 U.S.C. 148)	Multiple/Varies	Multiple/Varies	0		City or Municipal Highway Agency	Systemic	Roadway Departure	
0916-35-236	Roadway signs and traffic control	Curve-related warning signs and flashers	850	Feet	\$10710	\$10710	HSIP (23 U.S.C. 148)	Multiple/Varies	Multiple/Varies	0		City or Municipal Highway Agency	Systemic	Roadway Departure	
0916-35-237	Intersection traffic control	Intersection signing – add enhanced advance warning (double-up and/or oversize)	1800	Feet	\$27844	\$27844	HSIP (23 U.S.C. 148)	Multiple/Varies	Multiple/Varies	0		City or Municipal Highway Agency	Systemic	Intersections	
0916-35-243	Intersection traffic control	Intersection signing – add enhanced advance warning (double-up and/or oversize)	0.2	Miles	\$69469	\$69469	HSIP (23 U.S.C. 148)	Multiple/Varies	Multiple/Varies	0		City or Municipal Highway Agency	Systemic	Pedestrians	
0916-35-247	Intersection traffic control	Intersection signing – add enhanced advance warning (double-up and/or oversize)	0.3	Miles	\$45492	\$45492	HSIP (23 U.S.C. 148)	Multiple/Varies	Multiple/Varies	0		City or Municipal Highway Agency	Systemic	Pedestrians	
0916-35-248	Intersection traffic control	Intersection signing – add enhanced advance warning (double-up and/or oversize)	0.3	Miles	\$40616	\$40616	HSIP (23 U.S.C. 148)	Multiple/Varies	Multiple/Varies	0		City or Municipal Highway Agency	Systemic	Pedestrians	



2022 Texas Highway Safety Improvement Program

PROJECT NAME	IMPROVEMENT CATEGORY	SUBCATEGORY	OUTPUTS	OUTPUT TYPE	HSIP PROJECT COST(\$)	TOTAL PROJECT COST(\$)	FUNDING CATEGORY	LAND USE/AREA TYPE	FUNCTIONAL CLASSIFICATION	AADT	SPEED	OWNERSHIP	METHOD FOR SITE SELECTION	SHSP EMPHASIS AREA	SHSP STRATEGY
0918-24-266	Intersection traffic control	Modify traffic signal –other	1	Intersections	\$371177	\$371177	HSIP (23 U.S.C. 148)	Multiple/Varies	Multiple/Varies	0		City or Municipal Highway Agency	Spot	Intersections	
0918-47-248	Intersection traffic control	Modify traffic signal –other	0.2	Miles	\$330867	\$330867	HSIP (23 U.S.C. 148)	Multiple/Varies	Multiple/Varies	0		City or Municipal Highway Agency	Spot	Intersections	
0918-47-249	Intersection traffic control	Modify traffic signal –other	0.2	Miles	\$215103	\$215103	HSIP (23 U.S.C. 148)	Multiple/Varies	Multiple/Varies	0		City or Municipal Highway Agency	Spot	Intersections	
0918-47-250	Intersection traffic control	Modify traffic signal –other	0.2	Miles	\$292894	\$292894	HSIP (23 U.S.C. 148)	Multiple/Varies	Multiple/Varies	0		City or Municipal Highway Agency	Spot	Intersections	
0918-47-251	Intersection traffic control	Modify traffic signal –other	0.2	Miles	\$338582	\$338582	HSIP (23 U.S.C. 148)	Multiple/Varies	Multiple/Varies	0		City or Municipal Highway Agency	Spot	Intersections	
0918-47-252	Intersection traffic control	Modify traffic signal –other	0.2	Miles	\$272006	\$272006	HSIP (23 U.S.C. 148)	Multiple/Varies	Multiple/Varies	0		City or Municipal Highway Agency	Spot	Intersections	
0918-47-253	Intersection traffic control	Modify traffic signal –other	0.2	Miles	\$282014	\$282014	HSIP (23 U.S.C. 148)	Multiple/Varies	Multiple/Varies	0		City or Municipal Highway Agency	Spot	Intersections	
0918-47-255	Intersection traffic control	Modify traffic signal –other	0.2	Miles	\$279160	\$279160	HSIP (23 U.S.C. 148)	Multiple/Varies	Multiple/Varies	0		City or Municipal Highway Agency	Spot	Intersections	
0918-47-256	Intersection traffic control	Modify traffic signal –other	0.2	Miles	\$288909	\$288909	HSIP (23 U.S.C. 148)	Multiple/Varies	Multiple/Varies	0		City or Municipal Highway Agency	Spot	Intersections	
0918-47-257	Intersection traffic control	Modify traffic signal –other	0.2	Miles	\$223103	\$223103	HSIP (23 U.S.C. 148)	Multiple/Varies	Multiple/Varies	0		City or Municipal Highway Agency	Spot	Intersections	
0918-47-258	Intersection traffic control	Modify traffic signal –other	0.2	Miles	\$292271	\$292271	HSIP (23 U.S.C. 148)	Multiple/Varies	Multiple/Varies	0		City or Municipal Highway Agency	Spot	Intersections	

2022 Texas Highway Safety Improvement Program

PROJECT NAME	IMPROVEMENT CATEGORY	SUBCATEGORY	OUTPUTS	OUTPUT TYPE	HSIP PROJECT COST(\$)	TOTAL PROJECT COST(\$)	FUNDING CATEGORY	LAND USE/AREA TYPE	FUNCTIONAL CLASSIFICATION	AADT	SPEED	OWNERSHIP	METHOD FOR SITE SELECTION	SHSP EMPHASIS AREA	SHSP STRATEGY
0918-47-259	Intersection traffic control	Modify traffic signal –other	0.2	Miles	\$289438	\$289438	HSIP (23 U.S.C. 148)	Multiple/Varies	Multiple/Varies	0		City or Municipal Highway Agency	Spot	Intersections	
0918-47-260	Intersection traffic control	Modify traffic signal –other	0.2	Miles	\$284364	\$284364	HSIP (23 U.S.C. 148)	Multiple/Varies	Multiple/Varies	0		City or Municipal Highway Agency	Spot	Intersections	
0918-47-262	Intersection traffic control	Modify traffic signal –other	0.2	Miles	\$275577	\$275577	HSIP (23 U.S.C. 148)	Multiple/Varies	Multiple/Varies	0		City or Municipal Highway Agency	Spot	Intersections	
0918-47-263	Intersection traffic control	Modify traffic signal –other	0.2	Miles	\$311698	\$311698	HSIP (23 U.S.C. 148)	Multiple/Varies	Multiple/Varies	0		City or Municipal Highway Agency	Spot	Intersections	
0918-47-265	Intersection traffic control	Modify traffic signal –other	0.2	Miles	\$322921	\$322921	HSIP (23 U.S.C. 148)	Multiple/Varies	Multiple/Varies	0		City or Municipal Highway Agency	Spot	Intersections	
0918-47-267	Intersection traffic control	Modify traffic signal –other	0.2	Miles	\$294340	\$294340	HSIP (23 U.S.C. 148)	Multiple/Varies	Multiple/Varies	0		City or Municipal Highway Agency	Spot	Intersections	
0918-47-268	Intersection traffic control	Modify traffic signal –other	0.2	Miles	\$323552	\$323552	HSIP (23 U.S.C. 148)	Multiple/Varies	Multiple/Varies	0		City or Municipal Highway Agency	Spot	Intersections	
0918-47-331	Intersection traffic control	Modify traffic signal –other	0.2	Miles	\$368681	\$368681	HSIP (23 U.S.C. 148)	Multiple/Varies	Multiple/Varies	0		City or Municipal Highway Agency	Spot	Intersections	
0918-47-332	Intersection traffic control	Modify traffic signal –other	0.2	Miles	\$336570	\$336570	HSIP (23 U.S.C. 148)	Multiple/Varies	Multiple/Varies	0		City or Municipal Highway Agency	Spot	Intersections	
0918-47-334	Intersection traffic control	Modify traffic signal –other	1	Intersections	\$318205	\$318205	HSIP (23 U.S.C. 148)	Multiple/Varies	Multiple/Varies	0		City or Municipal Highway Agency	Spot	Intersections	
0918-47-335	Intersection traffic control	Modify traffic signal –other	1	Intersections	\$426764	\$426764	HSIP (23 U.S.C. 148)	Multiple/Varies	Multiple/Varies	0		City or Municipal Highway Agency	Spot	Intersections	

2022 Texas Highway Safety Improvement Program

PROJECT NAME	IMPROVEMENT CATEGORY	SUBCATEGORY	OUTPUTS	OUTPUT TYPE	HSIP PROJECT COST(\$)	TOTAL PROJECT COST(\$)	FUNDING CATEGORY	LAND USE/AREA TYPE	FUNCTIONAL CLASSIFICATION	AADT	SPEED	OWNERSHIP	METHOD FOR SITE SELECTION	SHSP EMPHASIS AREA	SHSP STRATEGY
0918-47-336	Intersection traffic control	Modify traffic signal –other	0.2	Miles	\$355481	\$355481	HSIP (23 U.S.C. 148)	Multiple/Varies	Multiple/Varies	0		City or Municipal Highway Agency	Spot	Intersections	
0918-47-337	Intersection traffic control	Modify traffic signal –other	1	Intersections	\$421660	\$421660	HSIP (23 U.S.C. 148)	Multiple/Varies	Multiple/Varies	0		City or Municipal Highway Agency	Spot	Intersections	
0918-47-338	Intersection traffic control	Modify traffic signal –other	1	Intersections	\$452168	\$452168	HSIP (23 U.S.C. 148)	Multiple/Varies	Multiple/Varies	0		City or Municipal Highway Agency	Spot	Intersections	
0918-47-341	Shoulder treatments	Pave existing shoulders	0.327	Miles	\$812203	\$812203	HSIP (23 U.S.C. 148)	Multiple/Varies	Multiple/Varies	0		City or Municipal Highway Agency	Spot	Roadway Departure	
0920-38-280	Intersection traffic control	Modify traffic signal timing – signal coordination	2.8	Miles	\$668095	\$668095	HSIP (23 U.S.C. 148)	Multiple/Varies	Multiple/Varies	0		City or Municipal Highway Agency	Spot	Intersections	
0920-38-281	Intersection traffic control	Modify traffic signal timing – signal coordination	0.35	Miles	\$184075	\$184075	HSIP (23 U.S.C. 148)	Multiple/Varies	Multiple/Varies	0		City or Municipal Highway Agency	Spot	Intersections	
0921-02-482	Intersection traffic control	Modify traffic signal –other	1	Intersections	\$777696	\$777696	HSIP (23 U.S.C. 148)	Multiple/Varies	Multiple/Varies	0		State Highway Agency	Systemic	Intersections	
0921-02-483	Intersection traffic control	Intersection signing – add enhanced advance warning (double-up and/or oversize)	1	Intersections	\$1287240	\$1287240	HSIP (23 U.S.C. 148)	Multiple/Varies	Multiple/Varies	0		State Highway Agency	Systemic	Intersections	
0923-00-075	Intersection traffic control	Modify traffic signal –other	1	Intersections	\$143664	\$143664	HSIP (23 U.S.C. 148)	Multiple/Varies	Multiple/Varies	0		State Highway Agency	Systemic	Intersections	
0923-06-087	Roadway signs and traffic control	Curve-related warning signs and flashers	1000	Feet	\$2750	\$2750	HSIP (23 U.S.C. 148)	Multiple/Varies	Multiple/Varies	0		City or Municipal Highway Agency	Spot	Roadway Departure	
0923-06-088	Roadway signs and traffic control	Curve-related warning signs and flashers	2500	Feet	\$5650	\$5650	HSIP (23 U.S.C. 148)	Multiple/Varies	Multiple/Varies	0		City or Municipal Highway Agency	Spot	Roadway Departure	

2022 Texas Highway Safety Improvement Program

PROJECT NAME	IMPROVEMENT CATEGORY	SUBCATEGORY	OUTPUTS	OUTPUT TYPE	HSIP PROJECT COST(\$)	TOTAL PROJECT COST(\$)	FUNDING CATEGORY	LAND USE/AREA TYPE	FUNCTIONAL CLASSIFICATION	AADT	SPEED	OWNERSHIP	METHOD FOR SITE SELECTION	SHSP EMPHASIS AREA	SHSP STRATEGY
0923-06-094	Roadway signs and traffic control	Curve-related warning signs and flashers	2500	Feet	\$4200	\$4200	HSIP (23 U.S.C. 148)	Multiple/Varies	Multiple/Varies	0		City or Municipal Highway Agency	Spot	Roadway Departure	
0923-09-068	Roadway signs and traffic control	Curve-related warning signs and flashers	1400	Feet	\$4200	\$4200	HSIP (23 U.S.C. 148)	Multiple/Varies	Multiple/Varies	0		City or Municipal Highway Agency	Spot	Roadway Departure	
0924-06-642	Intersection geometry	Splitter island – install on one or more approaches	0.25	Miles	\$250257	\$250257	HSIP (23 U.S.C. 148)	Multiple/Varies	Multiple/Varies	0		City or Municipal Highway Agency	Spot	Intersections	
0924-06-643	Lighting	Continuous roadway lighting	1.27	Miles	\$495880	\$495880	HSIP (23 U.S.C. 148)	Multiple/Varies	Multiple/Varies	0		City or Municipal Highway Agency	Spot	Roadway Departure	
0928-02-021	Roadway delineation	Raised pavement markers	12.216	Miles	\$120596	\$120596	HSIP (23 U.S.C. 148)	Multiple/Varies	Multiple/Varies	0		State Highway Agency	Spot	Roadway Departure	
0931-04-032	Roadway delineation	Raised pavement markers	6.726	Miles	\$70254	\$70254	HSIP (23 U.S.C. 148)	Multiple/Varies	Multiple/Varies	0		State Highway Agency	Spot	Roadway Departure	
0931-04-034	Roadway delineation	Raised pavement markers	1.287	Miles	\$1650548	\$1650548	HSIP (23 U.S.C. 148)	Multiple/Varies	Multiple/Varies	0		State Highway Agency	Spot	Roadway Departure	
0951-01-075	Roadway	Pavement surface - other	1	Miles	\$517179	\$517179	HSIP (23 U.S.C. 148)	Multiple/Varies	Multiple/Varies	0		State Highway Agency	Systemic	Roadway Departure	
0976-01-045	Intersection traffic control	Modify traffic signal –other	0.2	Miles	\$381265	\$381265	HSIP (23 U.S.C. 148)	Multiple/Varies	Multiple/Varies	0		State Highway Agency	Spot	Intersections	
0976-03-115	Intersection traffic control	Modify traffic signal –other	0.2	Miles	\$370956	\$370956	HSIP (23 U.S.C. 148)	Multiple/Varies	Multiple/Varies	0		State Highway Agency	Spot	Intersections	
0987-03-011	Shoulder treatments	Widen shoulder – paved or other (includes add shoulder)	0.4	Miles	\$683695	\$683695	HSIP (23 U.S.C. 148)	Multiple/Varies	Multiple/Varies	0		State Highway Agency	Spot	Intersections	
0989-02-056	Roadway	Roadway widening - add lane(s) along segment	3.977	Miles	\$4327856	\$4327856	HSIP (23 U.S.C. 148)	Multiple/Varies	Multiple/Varies	0		State Highway Agency	Spot	Roadway Departure	

2022 Texas Highway Safety Improvement Program

PROJECT NAME	IMPROVEMENT CATEGORY	SUBCATEGORY	OUTPUTS	OUTPUT TYPE	HSIP PROJECT COST(\$)	TOTAL PROJECT COST(\$)	FUNDING CATEGORY	LAND USE/AREA TYPE	FUNCTIONAL CLASSIFICATION	AADT	SPEED	OWNERSHIP	METHOD FOR SITE SELECTION	SHSP EMPHASIS AREA	SHSP STRATEGY
1024-02-049	Lighting	Intersection lighting	0.2	Miles	\$59902	\$59902	HSIP (23 U.S.C. 148)	Multiple/Varies	Multiple/Varies	0		State Highway Agency	Spot	Intersections	
1032-01-038	Roadway signs and traffic control	Curve-related warning signs and flashers	0.563	Miles	\$113475	\$113475	HSIP (23 U.S.C. 148)	Multiple/Varies	Multiple/Varies	0		State Highway Agency	Spot	Roadway Departure	
1089-02-018	Roadway signs and traffic control	Curve-related warning signs and flashers	13.212	Miles	\$87045	\$87045	HSIP (23 U.S.C. 148)	Multiple/Varies	Multiple/Varies	0		State Highway Agency	Spot	Roadway Departure	
1092-01-024	Roadway signs and traffic control	Curve-related warning signs and flashers	8.457	Miles	\$167103	\$167103	HSIP (23 U.S.C. 148)	Multiple/Varies	Multiple/Varies	0		State Highway Agency	Spot	Roadway Departure	
1149-01-030	Roadway	Roadway narrowing (road diet, roadway reconfiguration)	3.018	Miles	\$1170307	\$1170307	HSIP (23 U.S.C. 148)	Multiple/Varies	Multiple/Varies	0		State Highway Agency	Spot	Roadway Departure	
1155-04-013	Roadway	Roadway widening - travel lanes	3.907	Miles	\$4131152	\$4131152	HSIP (23 U.S.C. 148)	Multiple/Varies	Multiple/Varies	0		State Highway Agency	Systemic	Roadway Departure	
1171-01-022	Roadside	Roadside - other	7.054	Miles	\$3636909	\$3636909	HSIP (23 U.S.C. 148)	Multiple/Varies	Multiple/Varies	0		State Highway Agency	Spot	Roadway Departure	
1181-02-040	Roadway	Superelevation / cross slope	0.853	Miles	\$2340805	\$2340805	HSIP (23 U.S.C. 148)	Multiple/Varies	Multiple/Varies	0		State Highway Agency	Spot	Roadway Departure	
1181-03-040	Roadway	Roadway widening - add lane(s) along segment	2.226	Miles	\$4498629	\$4498629	HSIP (23 U.S.C. 148)	Multiple/Varies	Multiple/Varies	0		State Highway Agency	Spot	Roadway Departure	
1186-02-025	Shoulder treatments	Widen shoulder - paved or other (includes add shoulder)	1	Miles	\$2536797	\$2536797	HSIP (23 U.S.C. 148)	Multiple/Varies	Multiple/Varies	0		State Highway Agency	Spot	Roadway Departure	
1197-01-021	Roadway delineation	Raised pavement markers	2.45	Miles	\$3601691	\$3601691	HSIP (23 U.S.C. 148)	Multiple/Varies	Multiple/Varies	0		State Highway Agency	Spot	Roadway Departure	
1235-01-012	Roadway delineation	Raised pavement markers	8.019	Miles	\$6062197	\$6062197	HSIP (23 U.S.C. 148)	Multiple/Varies	Multiple/Varies	0		State Highway Agency	Systemic	Roadway Departure	
1257-01-054	Intersection traffic control	Modify traffic signal -other	0.2	Miles	\$199680	\$199680	HSIP (23 U.S.C. 148)	Multiple/Varies	Multiple/Varies	0		State Highway Agency	Spot	Intersections	

2022 Texas Highway Safety Improvement Program

PROJECT NAME	IMPROVEMENT CATEGORY	SUBCATEGORY	OUTPUTS	OUTPUT TYPE	HSIP PROJECT COST(\$)	TOTAL PROJECT COST(\$)	FUNDING CATEGORY	LAND USE/AREA TYPE	FUNCTIONAL CLASSIFICATION	AADT	SPEED	OWNERSHIP	METHOD FOR SITE SELECTION	SHSP EMPHASIS AREA	SHSP STRATEGY
1272-01-021	Intersection traffic control	Modify traffic signal –other	0.2	Miles	\$375939	\$375939	HSIP (23 U.S.C. 148)	Multiple/Varies	Multiple/Varies	0		State Highway Agency	Spot	Intersections	
1400-04-040	Lighting	Continuous roadway lighting	5.2	Miles	\$1895036	\$1895036	HSIP (23 U.S.C. 148)	Multiple/Varies	Multiple/Varies	0		State Highway Agency	Spot	Roadway Departure	
1427-01-046	Intersection traffic control	Modify traffic signal –other	0.2	Miles	\$109611	\$109611	HSIP (23 U.S.C. 148)	Multiple/Varies	Multiple/Varies	0		State Highway Agency	Spot	Intersections	
1433-01-031	Pedestrians and bicyclists	Pedestrians and bicyclists – other	0.331	Miles	\$64592	\$64592	HSIP (23 U.S.C. 148)	Multiple/Varies	Multiple/Varies	0		State Highway Agency	Spot	Pedestrians	
1433-01-032	Roadway delineation	Raised pavement markers	0.224	Miles	\$82813	\$82813	HSIP (23 U.S.C. 148)	Multiple/Varies	Multiple/Varies	0		State Highway Agency	Spot	Pedestrians	
1437-02-016	Roadway	Roadway narrowing (road diet, roadway reconfiguration)	0.345	Miles	\$730517	\$730517	HSIP (23 U.S.C. 148)	Multiple/Varies	Multiple/Varies	0		State Highway Agency	Spot	Intersections	
1539-02-034	Roadway	Roadway narrowing (road diet, roadway reconfiguration)	0.74	Miles	\$2285065	\$2285065	HSIP (23 U.S.C. 148)	Multiple/Varies	Multiple/Varies	0		State Highway Agency	Spot	Roadway Departure	
1558-02-039	Roadway signs and traffic control	Curve-related warning signs and flashers	0.781	Miles	\$89495	\$89495	HSIP (23 U.S.C. 148)	Multiple/Varies	Multiple/Varies	0		State Highway Agency	Spot	Roadway Departure	
1586-01-086	Intersection traffic control	Modify traffic signal –other	0.2	Miles	\$105344	\$105344	HSIP (23 U.S.C. 148)	Multiple/Varies	Multiple/Varies	0		State Highway Agency	Spot	Intersections	
1586-01-087	Intersection traffic control	Modify traffic signal –other	0.2	Miles	\$98780	\$98780	HSIP (23 U.S.C. 148)	Multiple/Varies	Multiple/Varies	0		State Highway Agency	Spot	Intersections	
1590-03-015	Roadway	Roadway widening - travel lanes	2	Miles	\$1482699	\$1482699	HSIP (23 U.S.C. 148)	Multiple/Varies	Multiple/Varies	0		State Highway Agency	Systemic	Roadway Departure	
1678-02-007	Roadside	Roadside - other	2.671	Miles	\$756629	\$756629	HSIP (23 U.S.C. 148)	Multiple/Varies	Multiple/Varies	0		State Highway Agency	Spot	Roadway Departure	
1690-01-135	Intersection geometry	Intersection geometry - other	0.2	Miles	\$371224	\$371224	HSIP (23 U.S.C. 148)	Multiple/Varies	Multiple/Varies	0		State Highway Agency	Systemic	Intersections	

2022 Texas Highway Safety Improvement Program

PROJECT NAME	IMPROVEMENT CATEGORY	SUBCATEGORY	OUTPUTS	OUTPUT TYPE	HSIP PROJECT COST(\$)	TOTAL PROJECT COST(\$)	FUNDING CATEGORY	LAND USE/AREA TYPE	FUNCTIONAL CLASSIFICATION	AADT	SPEED	OWNERSHIP	METHOD FOR SITE SELECTION	SHSP EMPHASIS AREA	SHSP STRATEGY
1690-01-136	Intersection geometry	Intersection geometry - other	0.2	Miles	\$125678	\$125678	HSIP (23 U.S.C. 148)	Multiple/Varies	Multiple/Varies	0		State Highway Agency	Systemic	Intersections	
1690-01-137	Intersection geometry	Intersection geometry - other	0.2	Miles	\$114117	\$114117	HSIP (23 U.S.C. 148)	Multiple/Varies	Multiple/Varies	0		State Highway Agency	Systemic	Intersections	
1690-01-138	Intersection geometry	Intersection geometry - other	0.2	Miles	\$217896	\$217896	HSIP (23 U.S.C. 148)	Multiple/Varies	Multiple/Varies	0		State Highway Agency	Systemic	Intersections	
1739-01-014, 1122-01-029	Roadway delineation	Raised pavement markers	12.418	Miles	\$144497	\$144497	HSIP (23 U.S.C. 148)	Multiple/Varies	Multiple/Varies	0		State Highway Agency	Spot	Roadway Departure	
1740-02-035, 1740-01-008	Roadway delineation	Raised pavement markers	9.066	Miles	\$11950	\$11950	HSIP (23 U.S.C. 148)	Multiple/Varies	Multiple/Varies	0		State Highway Agency	Spot	Roadway Departure	
1755-03-008	Roadway delineation	Raised pavement markers	6.478	Miles	\$38072	\$38072	HSIP (23 U.S.C. 148)	Multiple/Varies	Multiple/Varies	0		State Highway Agency	Spot	Roadway Departure	
1775-01-011	Intersection traffic control	Intersection signing – add enhanced advance warning (double-up and/or oversize)	0.5	Miles	\$27040	\$27040	HSIP (23 U.S.C. 148)	Multiple/Varies	Multiple/Varies	0		State Highway Agency	Spot	Roadway Departure	
1872-02-019	Roadway signs and traffic control	Curve-related warning signs and flashers	1.973	Miles	\$995017	\$995017	HSIP (23 U.S.C. 148)	Multiple/Varies	Multiple/Varies	0		State Highway Agency	Spot	Roadway Departure	
1902-01-033	Roadway signs and traffic control	Curve-related warning signs and flashers	1.088	Miles	\$83707	\$83707	HSIP (23 U.S.C. 148)	Multiple/Varies	Multiple/Varies	0		State Highway Agency	Spot	Roadway Departure	
2020-02-035	Lighting	Continuous roadway lighting	2.666	Miles	\$788443	\$788443	HSIP (23 U.S.C. 148)	Multiple/Varies	Multiple/Varies	0		State Highway Agency	Spot	Roadway Departure	
2121-01-100	Advanced technology and ITS	Wrong-way Driving Detection System	11.147	Miles	\$448920	\$448920	HSIP (23 U.S.C. 148)	Multiple/Varies	Multiple/Varies	0		State Highway Agency	Spot	Older Drivers	
2121-02-176	Intersection traffic control	Modify traffic signal –other	0.2	Miles	\$568933	\$568933	HSIP (23 U.S.C. 148)	Multiple/Varies	Multiple/Varies	0		State Highway Agency	Spot	Intersections	
2250-01-029	Pedestrians and bicyclists	Pedestrian signal - other	0.2	Miles	\$80323	\$80323	HSIP (23 U.S.C. 148)	Multiple/Varies	Multiple/Varies	0		State Highway Agency	Spot	Pedestrians	

2022 Texas Highway Safety Improvement Program

PROJECT NAME	IMPROVEMENT CATEGORY	SUBCATEGORY	OUTPUTS	OUTPUT TYPE	HSIP PROJECT COST(\$)	TOTAL PROJECT COST(\$)	FUNDING CATEGORY	LAND USE/AREA TYPE	FUNCTIONAL CLASSIFICATION	AADT	SPEED	OWNERSHIP	METHOD FOR SITE SELECTION	SHSP EMPHASIS AREA	SHSP STRATEGY
2250-01-030	Pedestrians and bicyclists	Pedestrian signal - other	0.2	Miles	\$53449	\$53449	HSIP (23 U.S.C. 148)	Multiple/Varies	Multiple/Varies	0		State Highway Agency	Spot	Pedestrians	
2279-02-020	Roadside	Roadside - other	26.87	Miles	\$443781	\$443781	HSIP (23 U.S.C. 148)	Multiple/Varies	Multiple/Varies	0		State Highway Agency	Spot	Roadway Departure	
2369-01-031	Intersection traffic control	Modify traffic signal -other	0.2	Miles	\$114663	\$114663	HSIP (23 U.S.C. 148)	Multiple/Varies	Multiple/Varies	0		State Highway Agency	Spot	Intersections	
2446-01-030	Pedestrians and bicyclists	Pedestrians and bicyclists - other	1.495	Miles	\$1149544	\$1149544	HSIP (23 U.S.C. 148)	Multiple/Varies	Multiple/Varies	0		State Highway Agency	Spot	Pedestrians	
2467-01-013	Roadside	Roadside - other	15.749	Miles	\$150089	\$150089	HSIP (23 U.S.C. 148)	Multiple/Varies	Multiple/Varies	0		State Highway Agency	Spot	Roadway Departure	
2570-01-011	Roadway	Roadway widening - travel lanes	2.298	Miles	\$2849471	\$2849471	HSIP (23 U.S.C. 148)	Multiple/Varies	Multiple/Varies	0		State Highway Agency	Systemic	Roadway Departure	
2574-01-047	Roadside	Roadside - other	13.514	Miles	\$648091	\$648091	HSIP (23 U.S.C. 148)	Multiple/Varies	Multiple/Varies	0		State Highway Agency	Spot	Roadway Departure	
2590-01-030	Roadway delineation	Raised pavement markers	3.658	Miles	\$40432	\$40432	HSIP (23 U.S.C. 148)	Multiple/Varies	Multiple/Varies	0		State Highway Agency	Spot	Roadway Departure	
2737-01-020	Lighting	Continuous roadway lighting	7.465	Miles	\$162432	\$162432	HSIP (23 U.S.C. 148)	Multiple/Varies	Multiple/Varies	0		State Highway Agency	Spot	Roadway Departure	
2780-01-010	Lighting	Intersection lighting	0.2	Miles	\$41208	\$41208	HSIP (23 U.S.C. 148)	Multiple/Varies	Multiple/Varies	0		State Highway Agency	Spot	Intersections	
2831-01-015	Intersection traffic control	Intersection flashers -sign-mounted or overhead	0.2	Miles	\$34887	\$34887	HSIP (23 U.S.C. 148)	Multiple/Varies	Multiple/Varies	0		State Highway Agency	Spot	Intersections	
2891-01-018	Roadside	Roadside - other	6.634	Miles	\$1130427	\$1130427	HSIP (23 U.S.C. 148)	Multiple/Varies	Multiple/Varies	0		State Highway Agency	Spot	Roadway Departure	
2893-01-018	Roadway delineation	Raised pavement markers	1.886	Miles	\$2188618	\$2188618	HSIP (23 U.S.C. 148)	Multiple/Varies	Multiple/Varies	0		State Highway Agency	Spot	Roadway Departure	



2022 Texas Highway Safety Improvement Program

PROJECT NAME	IMPROVEMENT CATEGORY	SUBCATEGORY	OUTPUTS	OUTPUT TYPE	HSIP PROJECT COST(\$)	TOTAL PROJECT COST(\$)	FUNDING CATEGORY	LAND USE/AREA TYPE	FUNCTIONAL CLASSIFICATION	AADT	SPEED	OWNERSHIP	METHOD FOR SITE SELECTION	SHSP EMPHASIS AREA	SHSP STRATEGY
3093-01-002	Shoulder treatments	Widen shoulder – paved or other (includes add shoulder)	3.026	Miles	\$5419301	\$5419301	HSIP (23 U.S.C. 148)	Multiple/Varies	Multiple/Varies	0		State Highway Agency	Spot	Roadway Departure	
3158-01-044	Roadway delineation	Raised pavement markers	7.662	Miles	\$1594936	\$1594936	HSIP (23 U.S.C. 148)	Multiple/Varies	Multiple/Varies	0		State Highway Agency	Spot	Roadway Departure	
3220-01-013	Roadside	Roadside - other	6.586	Miles	\$995810	\$995810	HSIP (23 U.S.C. 148)	Multiple/Varies	Multiple/Varies	0		State Highway Agency	Spot	Roadway Departure	
3248-01-008	Roadway delineation	Raised pavement markers	1.89	Miles	\$2339174	\$2339174	HSIP (23 U.S.C. 148)	Multiple/Varies	Multiple/Varies	0		State Highway Agency	Systemic	Roadway Departure	
3451-01-048	Intersection traffic control	Modify traffic signal –other	0.2	Miles	\$467510	\$467510	HSIP (23 U.S.C. 148)	Multiple/Varies	Multiple/Varies	0		State Highway Agency	Spot	Intersections	
3469-02-007	Intersection traffic control	Intersection signing – add enhanced advance warning (double-up and/or oversize)	0.193	Miles	\$40655	\$40655	HSIP (23 U.S.C. 148)	Multiple/Varies	Multiple/Varies	0		State Highway Agency	Systemic	Intersections	
3521-01-022	Intersection traffic control	Modify control – new traffic signal	0.2	Miles	\$290913	\$290913	HSIP (23 U.S.C. 148)	Multiple/Varies	Multiple/Varies	0		State Highway Agency	Spot	Intersections	

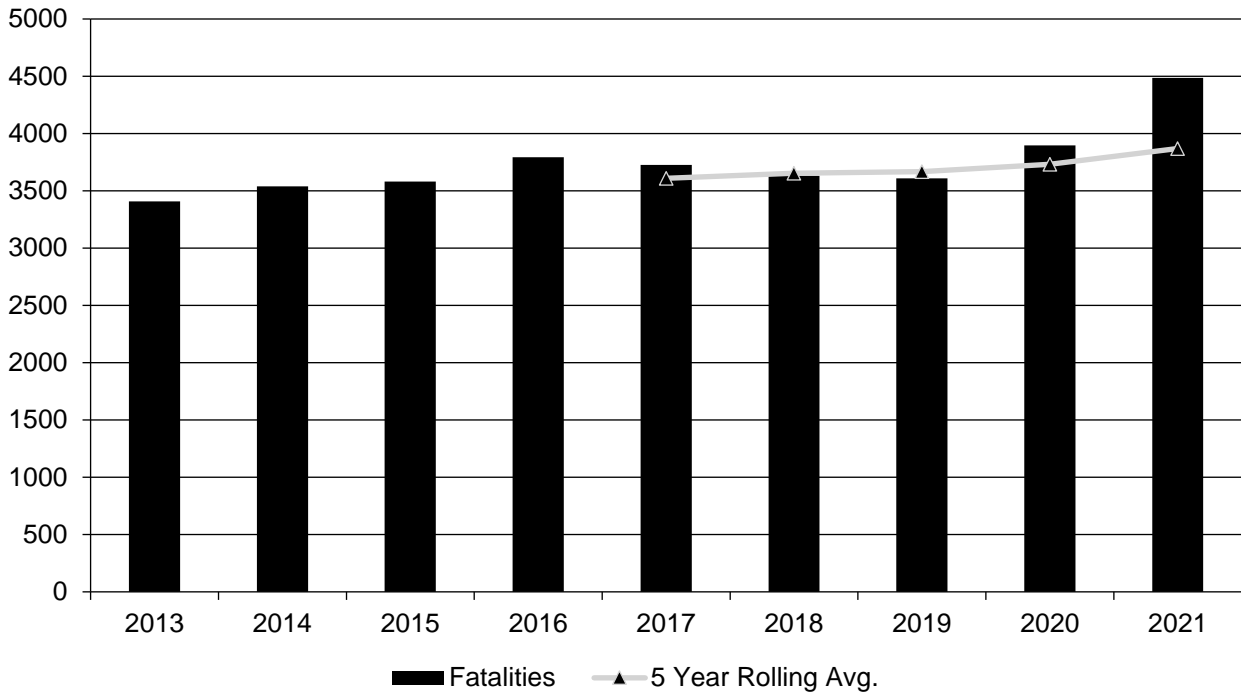
## Safety Performance

### *General Highway Safety Trends*

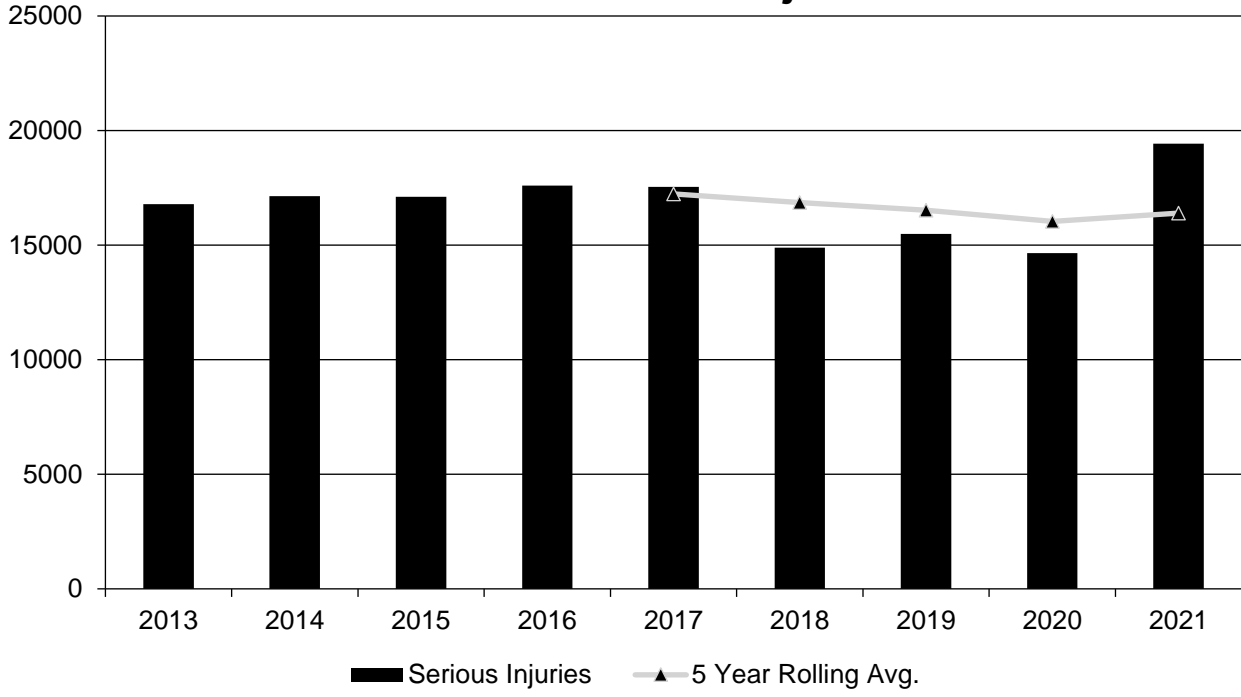
Present data showing the general highway safety trends in the State for the past five years.

<b>PERFORMANCE MEASURES</b>	<b>2013</b>	<b>2014</b>	<b>2015</b>	<b>2016</b>	<b>2017</b>	<b>2018</b>	<b>2019</b>	<b>2020</b>	<b>2021</b>
Fatalities	3,407	3,538	3,582	3,794	3,726	3,631	3,610	3,896	4,485
Serious Injuries	16,785	17,134	17,110	17,602	17,546	14,892	15,483	14,656	19,434
Fatality rate (per HMVMT)	1.390	1.460	1.390	1.400	1.360	1.310	1.260	1.328	1.560
Serious injury rate (per HMVMT)	6.860	7.050	6.630	6.490	6.390	5.370	5.530	4.996	6.740
Number non-motorized fatalities	542	538	613	746	670	690	728	796	914
Number of non-motorized serious injuries	1,323	1,364	1,435	1,564	1,478	1,414	1,572	1,442	1,714

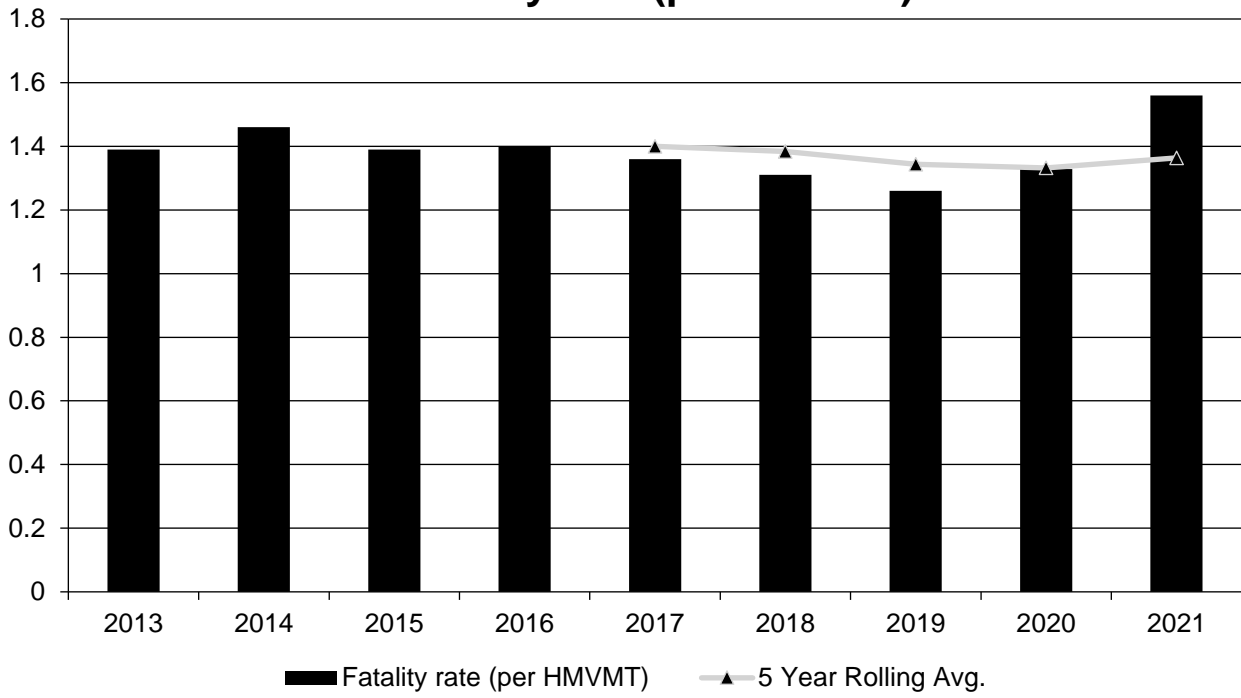
### Annual Fatalities



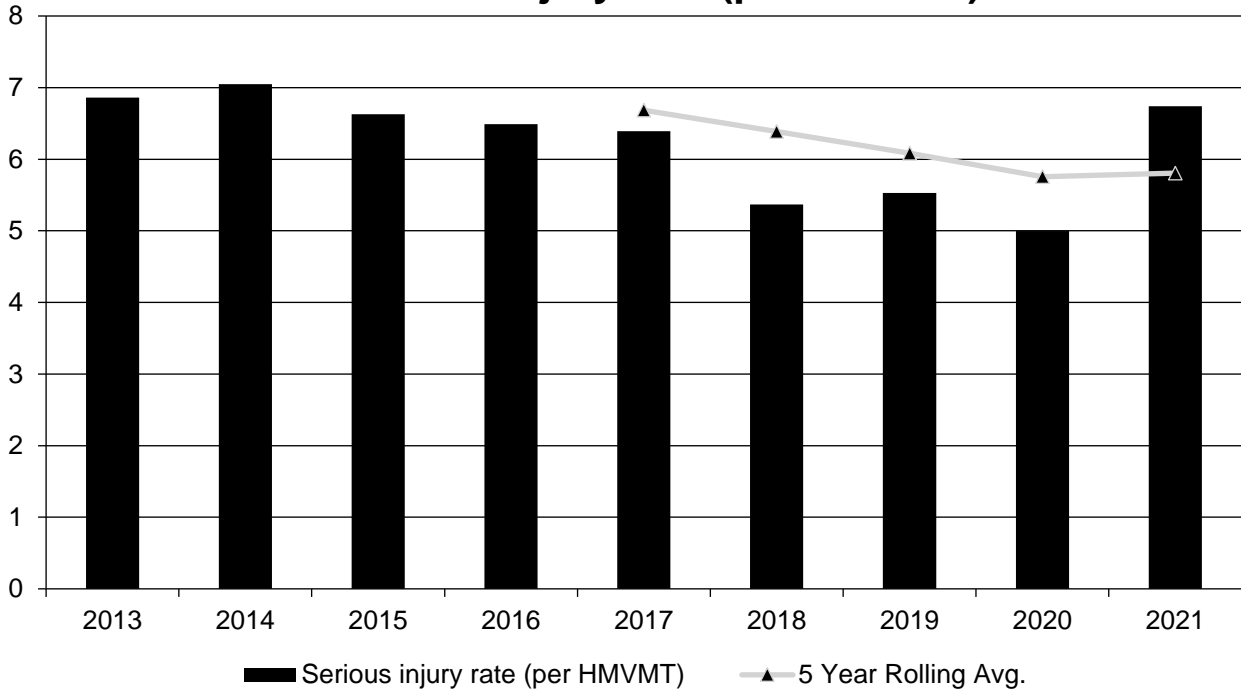
### Annual Serious Injuries



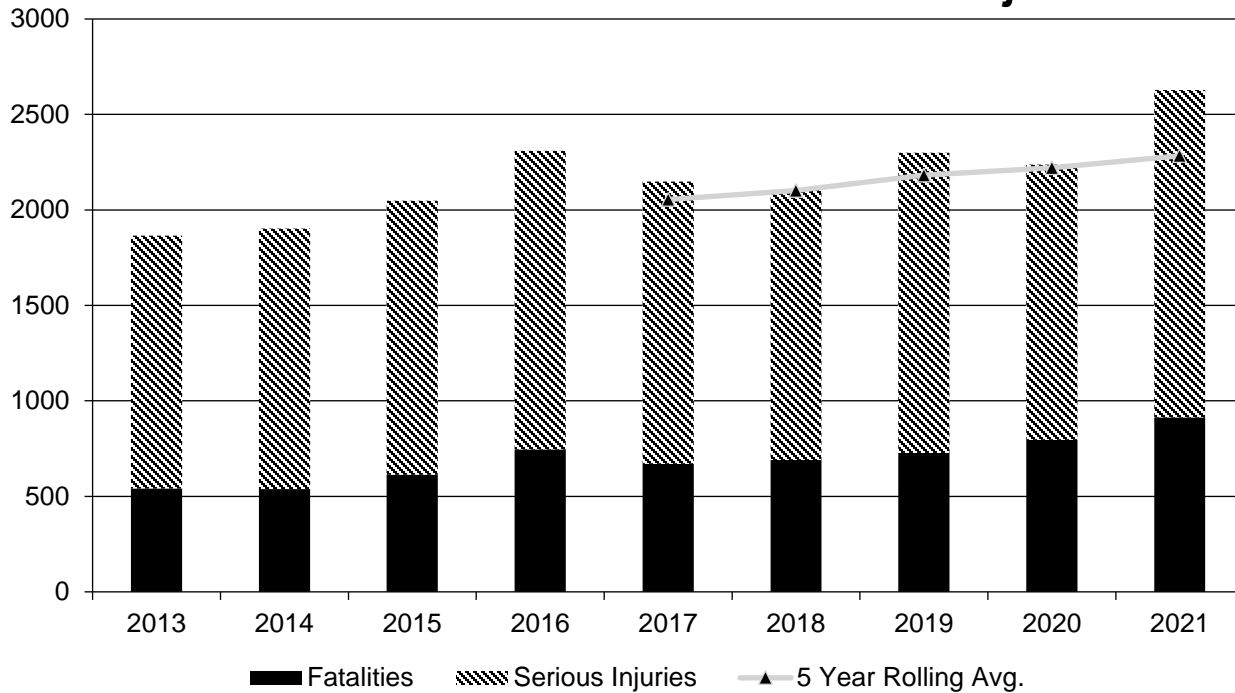
### Fatality rate (per HMVMT)



### Serious injury rate (per HMVMT)



### Non Motorized Fatalities and Serious Injuries



**Describe fatality data source.**

State Motor Vehicle Crash Database

**To the maximum extent possible, present this data by functional classification and ownership.**

**Year 2021**

Functional Classification	Number of Fatalities (5-yr avg)	Number of Serious Injuries (5-yr avg)	Fatality Rate (per HMVMT) (5-yr avg)	Serious Injury Rate (per HMVMT) (5-yr avg)
Rural Principal Arterial (RPA) - Interstate	204.2	567.6	1.06	2.95
Rural Principal Arterial (RPA) - Other Freeways and Expressways	10.2	29	1	2.82
Rural Principal Arterial (RPA) - Other	470.2	1,337.2	2.02	5.74
Rural Minor Arterial	322.6	873	2.64	7.15
Rural Minor Collector	37.8	135.2	1.94	6.98
Rural Major Collector	361.8	1,139.6	2.78	8.77

2022 Texas Highway Safety Improvement Program

<b>Functional Classification</b>	<b>Number of Fatalities (5-yr avg)</b>	<b>Number of Serious Injuries (5-yr avg)</b>	<b>Fatality Rate (per HMVMT) (5-yr avg)</b>	<b>Serious Injury Rate (per HMVMT) (5-yr avg)</b>
Rural Local Road or Street	323	1,624.4	6.51	32.59
Urban Principal Arterial (UPA) - Interstate	509	1,889	1	3.7
Urban Principal Arterial (UPA) - Other Freeways and Expressways	228.2	904	0.71	2.8
Urban Principal Arterial (UPA) - Other	552.6	2,484.6	1.26	5.65
Urban Minor Arterial	138.2	697	0.41	2.08
Urban Minor Collector	0.8	2.8	0.1	0.34
Urban Major Collector	56.4	270.6	0.2	0.95
Urban Local Road or Street	659.6	4,309.2	5.22	34.02

2022 Texas Highway Safety Improvement Program

Year 2019

Roadways	Number of Fatalities (5-yr avg)	Number of Serious Injuries (5-yr avg)	Fatality Rate (per HMVMT) (5-yr avg)	Serious Injury Rate (per HMVMT) (5-yr avg)
State Highway Agency	2,795.6	10,880	1.42	5.52
County Highway Agency	239.8	1,130.4	1.61	7.59
Town or Township Highway Agency				
City or Municipal Highway Agency	619.2	4,469.2	1.18	8.52
State Park, Forest, or Reservation Agency				
Local Park, Forest or Reservation Agency				
Other State Agency	1.6	14.4	0.54	4.56
Other Local Agency				
Private (Other than Railroad)				
Railroad				
State Toll Authority	17.6	133.8	0.21	1.62
Local Toll Authority				
Other Public Instrumentality (e.g. Airport, School, University)				
Indian Tribe Nation				

**Safety Performance Targets**

**Safety Performance Targets**

**Calendar Year 2023 Targets \***

**Number of Fatalities:3682.0**

**Describe the basis for established target, including how it supports SHSP goals.**

## 2022 Texas Highway Safety Improvement Program

In May of 2019, the Texas Transportation Commission (TTC) adopted Minute Order 115481, directing TxDOT to work toward the goal of reducing the number of deaths on Texas roadways by half by the year 2035 and to zero by the year 2050. TxDOT modified its performance measures and target calculations accordingly. This target provides a numeric objective against which to measure progress toward that aspirational goal, and is a required performance target.

### ***Number of Serious Injuries:17062.0***

#### ***Describe the basis for established target, including how it supports SHSP goals.***

In May of 2019, the Texas Transportation Commission (TTC) adopted Minute Order 115481, directing TxDOT to work toward the goal of reducing the number of deaths on Texas roadways by half by the year 2035 and to zero by the year 2050. TxDOT modified its performance measures and target calculations accordingly. This target provides a numeric objective against which to measure progress toward that aspirational goal, and is a required performance target.

### ***Fatality Rate:1.380***

#### ***Describe the basis for established target, including how it supports SHSP goals.***

In May of 2019, the Texas Transportation Commission (TTC) adopted Minute Order 115481, directing TxDOT to work toward the goal of reducing the number of deaths on Texas roadways by half by the year 2035 and to zero by the year 2050. TxDOT modified its performance measures and target calculations accordingly. This target provides a numeric objective against which to measure progress toward that aspirational goal, and is a required performance target.

### ***Serious Injury Rate:6.390***

#### ***Describe the basis for established target, including how it supports SHSP goals.***

In May of 2019, the Texas Transportation Commission (TTC) adopted Minute Order 115481, directing TxDOT to work toward the goal of reducing the number of deaths on Texas roadways by half by the year 2035 and to zero by the year 2050. TxDOT modified its performance measures and target calculations accordingly. This target provides a numeric objective against which to measure progress toward that aspirational goal, and is a required performance target.

### ***Total Number of Non-Motorized Fatalities and Serious Injuries:2357.0***

#### ***Describe the basis for established target, including how it supports SHSP goals.***

In May of 2019, the Texas Transportation Commission (TTC) adopted Minute Order 115481, directing TxDOT to work toward the goal of reducing the number of deaths on Texas roadways by half by the year 2035 and to zero by the year 2050. TxDOT modified its performance measures and target calculations accordingly. This target provides a numeric objective against which to measure progress toward that aspirational goal, and is a required performance target.

#### **Describe efforts to coordinate with other stakeholders (e.g. MPOs, SHSO) to establish safety performance targets.**

In addition to preparing, maintaining, and striving to reach goals of the Highway Safety Improvement Program, TxDOT also spearheads the creation of and updates to the Strategic Highway Safety Plan (SHSP) and the



## 2022 Texas Highway Safety Improvement Program

Highway Safety Plan (HSP). The SHSP process is coordinated with the help of Texas A&M University's Texas Transportation Institute (TTI). TxDOT, through TTI, stays in contact with partners and stakeholders to update the SHSP and work toward targets identified in the SHSP. When targets are set in the SHSP (especially the five Core Metrics: Fatalities, Fatality Rate, Serious Injuries, Serious Injuries Rate, and Non-Motorized Fatalities & Serious Injuries), the HSIP targets have historically been set using the same methodology to maintain consistency across the related plans. Going forward from the Commission's adoption of Road to Zero by 2050, the HSP and HSIP targets are set as aspirational targets. Despite their varied origin, these three coordinated plans strive to ensure a common vision and direction. Charts in the HSIP annual report containing data for the 5 Core Measures are coordinated with those contained in the SHSP. In addition, both the Behavioral Traffic Safety Section and the Traffic Engineering Section within the Traffic Safety Division collaborate extensively when producing the SHSP and the HSP. Meetings, exchange of ideas, coordination of projects, data analysis, and a constant flow of communication ensures that these projects work together toward common targets and objectives. The SHSP update process is guided by an Executive Committee (EC) and a Stakeholder Group (SG) representing a diverse assembly of road safety agencies, organizations, advocates, and experts. During the creation process, these teams determined priorities based on data and discussion, establishing seven Emphasis Area Teams to develop the content. The development process was supported by the Management Team, which included representatives from TxDOT, FHWA, and a TTI support group. The EC consists of representatives of TxDOT, FHWA, the National Highway Traffic Safety Administration (NHTSA), metropolitan planning organizations (MPOs), cities that have adopted Vision Zero, state and local law enforcement agencies, transit agencies, trucking and railroad agencies and organizations, the Texas Department of Motor Vehicles, the Texas Department of Public Safety, county transportation officials, bicycle and pedestrian advocates, the Texas Department of State Health Services, the judiciary, and the Texas Alcoholic Beverage Commission.

### Does the State want to report additional optional targets?

No

On May 30th, 2019, the Texas Transportation Commission adopted a formal goal to achieve zero deaths on our roadways by 2050 with a midway goal to cut fatalities in half by 2035.

### Describe progress toward meeting the State's 2022 Safety Performance Targets (based on data available at the time of reporting). For each target, include a discussion of any reasons for differences in the actual outcomes and targets.

PERFORMANCE MEASURES	TARGETS	ACTUALS
Number of Fatalities	3687.0	3869.6
Number of Serious Injuries	17151.0	16402.2
Fatality Rate	1.330	1.364
Serious Injury Rate	6.060	5.805
Non-Motorized Fatalities and Serious Injuries	2316.4	2283.6

Based on the data available through CRIS, ARF, and FARS, for the past 5 years there had been progress towards meeting the aspirational fatality targets established by the Road to Zero effort as ordered by the Texas Transportation Commission in May of 2019. There has been considerable variability between the years 2020 and 2021 demonstrating unexpected increases even during shutdown during the pandemic quarantine periods. Several reasons for this have been cited nationwide and not unique to Texas such as increase in speeding and

## 2022 Texas Highway Safety Improvement Program

distracted driving behaviors. Both of these emphasis areas have been carried through to the new 2022-2027 Texas SHSP.

### ***Applicability of Special Rules***

**Does the HRRR special rule apply to the State for this reporting period?**

No

**Provide the number of older driver and pedestrian fatalities and serious injuries 65 years of age and older for the past seven years.**

<b>PERFORMANCE MEASURES</b>	<b>2015</b>	<b>2016</b>	<b>2017</b>	<b>2018</b>	<b>2019</b>	<b>2020</b>	<b>2021</b>
Number of Older Driver and Pedestrian Fatalities	354	394	390	456	445	448	505
Number of Older Driver and Pedestrian Serious Injuries	1,097	1,092	1,152	984	1,067	952	1,234

## Evaluation

### *Program Effectiveness*

#### How does the State measure effectiveness of the HSIP?

- Change in fatalities and serious injuries

#### Based on the measures of effectiveness selected previously, describe the results of the State's program level evaluations.

Based on the measure of effectiveness selected previously, "Change in fatalities and suspected serious injuries," TxDOT's efforts over the last decade are making a significant difference in saving the lives of Texans and visitors to our great State. The new HSIP process as mentioned previously was just implemented and will take time to evaluate over the coming years once projects selected in the new process have been constructed. We are dismayed at the increase in crash counts seen in the last year nationwide, and TxDOT has taken aggressive steps forward in public messaging, driver education, and safety construction funding.

#### What other indicators of success does the State use to demonstrate effectiveness and success of the Highway Safety Improvement Program?

- # miles improved by HSIP
- Increased awareness of safety and data-driven process
- More systemic programs

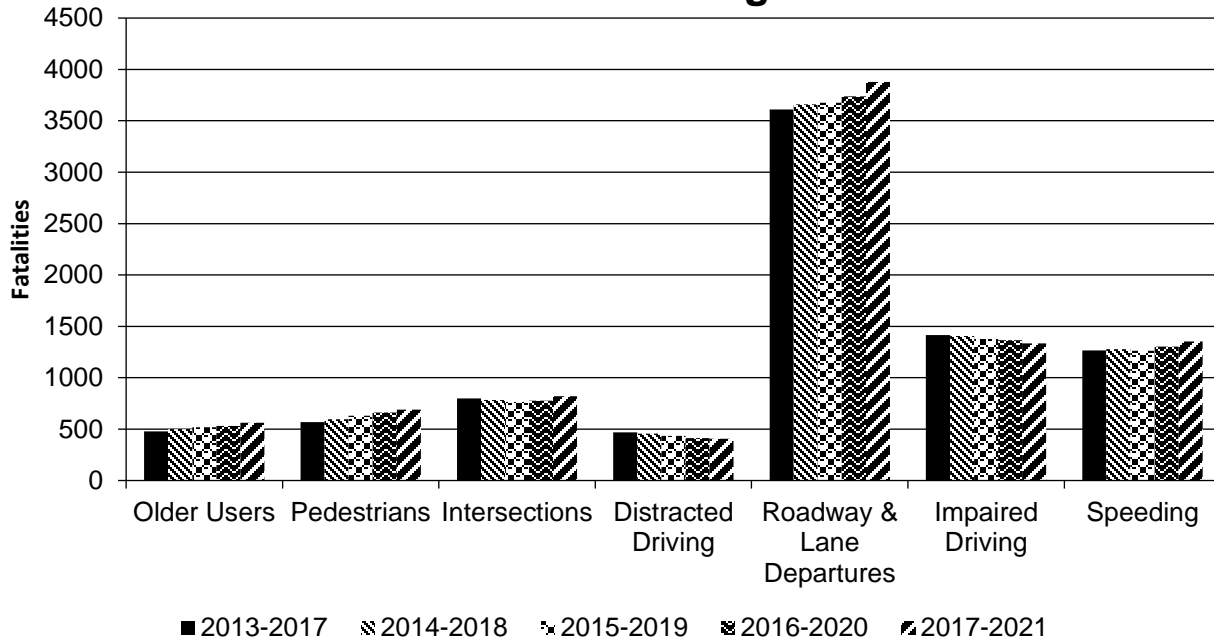
### *Effectiveness of Groupings or Similar Types of Improvements*

#### Present and describe trends in SHSP emphasis area performance measures.

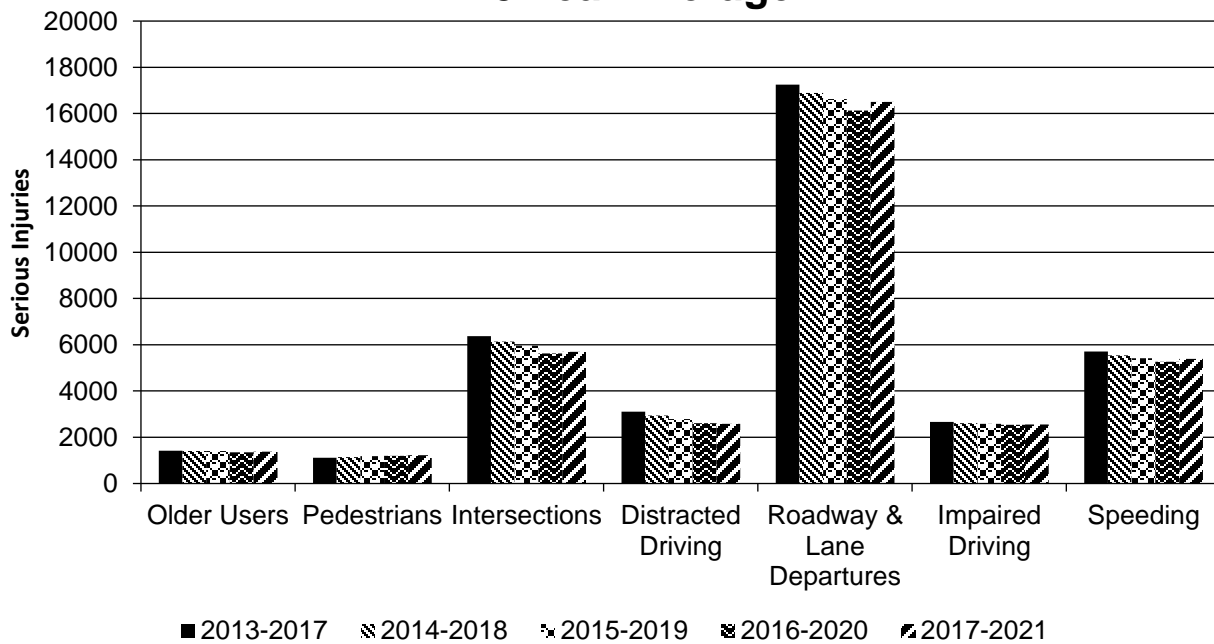
Year 2021

SHSP Emphasis Area	Targeted Crash Type	Number of Fatalities (5-yr avg)	Number of Serious Injuries (5-yr avg)	Fatality Rate (per HMVMT) (5-yr avg)	Serious Injury Rate (per HMVMT) (5-yr avg)
Older Users	All	560.8	1,380.8	0.2	0.5
Pedestrians	Vehicle/pedestrian	689.2	1,221.8	0.25	0.44
Intersections	Intersections	820.8	5,696	0.3	2.04
Distracted Driving	All	406.8	2,578	0.15	0.93
Roadway & Lane Departures	Other (define)	3,876.8	16,499.4	1.39	5.92
Impaired Driving	Other (define)	1,335	2,558.4	0.48	0.92
Speeding	Speed-related	1,352	5,389.4	0.49	1.93

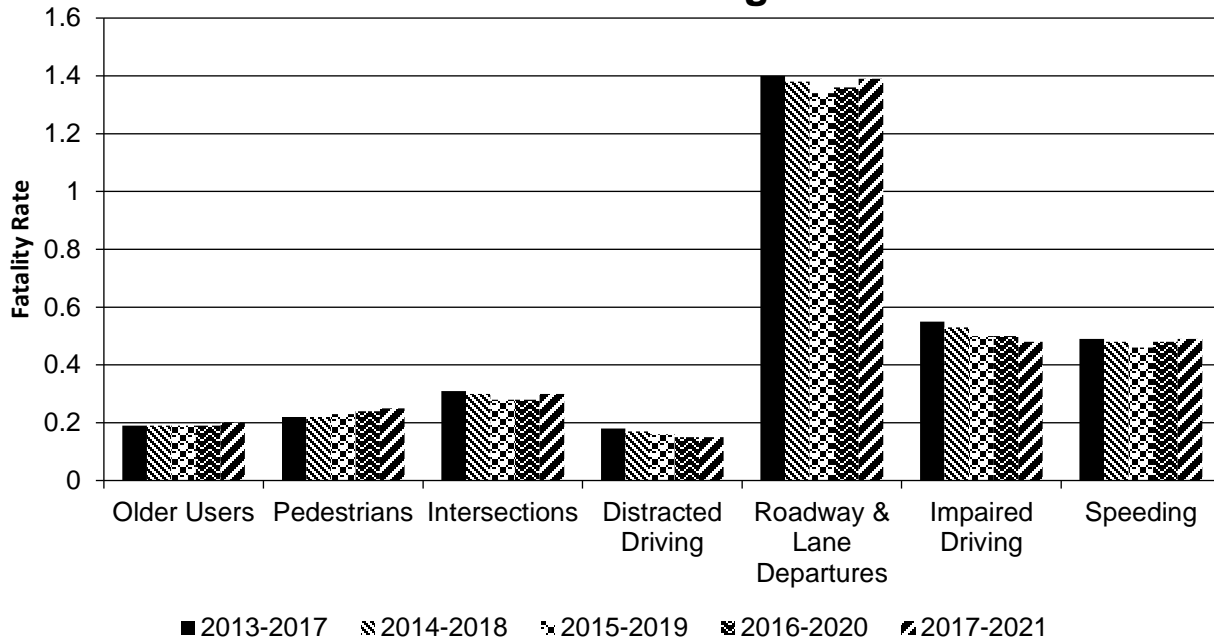
### Number of Fatalities 5 Year Average



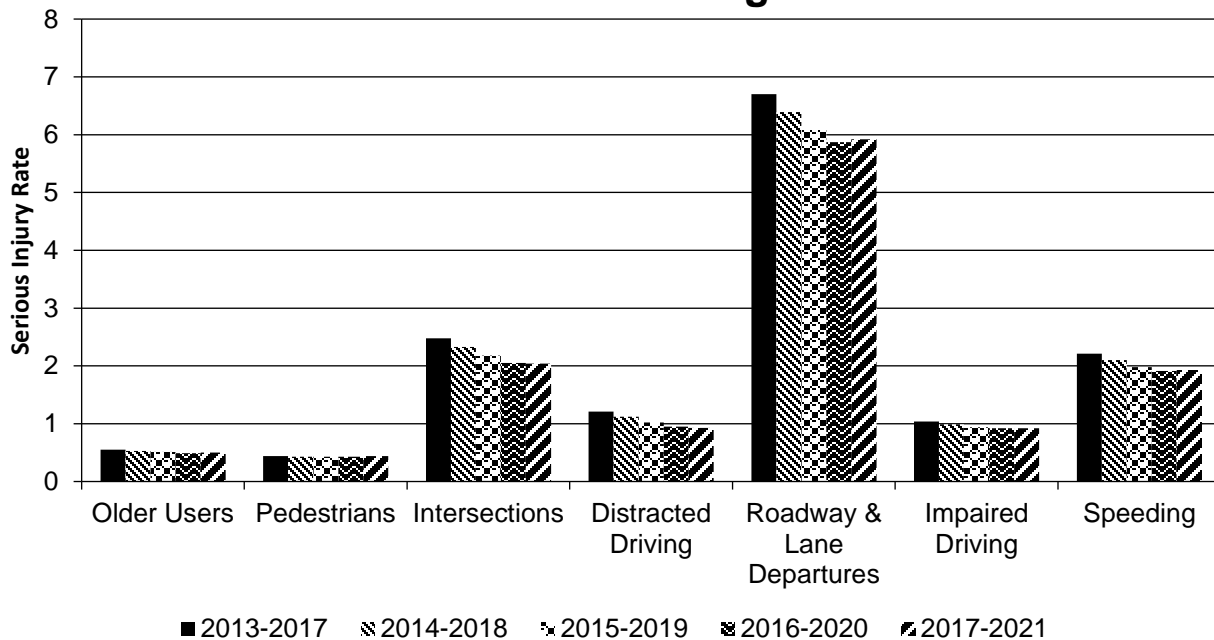
### Number of Serious Injuries 5 Year Average



### Fatality Rate (per HMVMT) 5 Year Average



### Serious Injury Rate (per HMVMT) 5 Year Average



The Impaired Driving emphasis area includes those crashes where at least one driver was identified as having been drinking, having taken medication, been under the influence of alcohol or drugs, a blood alcohol content greater than zero, or a positive drug test.

## 2022 Texas Highway Safety Improvement Program

Impaired driving was identified as a factor for 8,301 fatal crashes (39 percent of all fatal crashes) and 13,841 serious injury crashes (15 percent of all serious injury crashes) from 2010–2016.

The Roadway and Lane Departures emphasis area encompasses two crash types pertaining to difficulties with lane keeping: single motor vehicles that run off the road (SVROR) and head-on collisions. SVROR describes a crash where only one vehicle is involved and the first harmful event impact occurred on the shoulder, beyond the shoulder, or in the median of the roadway. Head-on crashes involve two motor vehicles traveling straight and in opposite directions prior to impact.

These types of crashes were the identified crash type for 9,560 fatal crashes (45 percent of all fatal crashes) and 30,766 serious injury crashes (34 percent of all serious injury crashes) from 2010–2016.

***Project Effectiveness***

**Provide the following information for previously implemented projects that the State evaluated this reporting period.**

## Compliance Assessment

**What date was the State’s current SHSP approved by the Governor or designated State representative?**

07/26/2017

**What are the years being covered by the current SHSP?**

From: 2017 To: 2022

**When does the State anticipate completing it’s next SHSP update?**

2022

Texas has approved and published the 2022-2027 SHSP reflecting our Road to Zero by 2050 aspirational targets, as well as our refined and expanded emphasis areas. Our additional emphasis areas will now include Post-Crash Care, Occupant Protection, Vulnerable Road Users, and the incorporation of technological advances.

**Provide the current status (percent complete) of MIRE fundamental data elements collection efforts using the table below.**

\*Based on Functional Classification (MIRE 1.0 Element Number) [MIRE 2.0 Element Number]

ROAD TYPE	*MIRE NAME (MIRE NO.)	NON LOCAL PAVED ROADS - SEGMENT		NON LOCAL PAVED ROADS - INTERSECTION		NON LOCAL PAVED ROADS - RAMPS		LOCAL PAVED ROADS		UNPAVED ROADS	
		STATE	NON-STATE	STATE	NON-STATE	STATE	NON-STATE	STATE	NON-STATE	STATE	NON-STATE
ROADWAY SEGMENT	Segment Identifier (12) [12]										
	Route Number (8) [8]	100	100								
	Route/Street Name (9) [9]	100	100								
	Federal Aid/Route Type (21) [21]	100	100								
	Rural/Urban Designation (20) [20]	100	100					100	100		
	Surface Type (23) [24]	100	100								
	Begin Point Segment Descriptor (10) [10]										
	End Point Segment Descriptor (11) [11]										
	Segment Length (13) [13]										
	Direction of Inventory (18) [18]	100	100								



2022 Texas Highway Safety Improvement Program

ROAD TYPE	*MIRE NAME (MIRE NO.)	NON LOCAL PAVED ROADS - SEGMENT		NON LOCAL PAVED ROADS - INTERSECTION		NON LOCAL PAVED ROADS - RAMPS		LOCAL PAVED ROADS		UNPAVED ROADS	
		STATE	NON-STATE	STATE	NON-STATE	STATE	NON-STATE	STATE	NON-STATE	STATE	NON-STATE
	Functional Class (19) [19]	100	100					100	100	100	100
	Median Type (54) [55]	100	100								
	Access Control (22) [23]	100	100								
	One/Two Way Operations (91) [93]	100	100								
	Number of Through Lanes (31) [32]	100	100					100	100		
	Average Annual Daily Traffic (79) [81]	100	100					1	1		
	AA DT Year (80) [82]	100	100								
	Type of Governmental Ownership (4) [4]	100	100					100	100		
<b>INTERSECTION</b>	Unique Junction Identifier (120) [110]										
	Location Identifier for Road 1 Crossing Point (122) [112]										
	Location Identifier for Road 2 Crossing Point (123) [113]										
	Intersection/Junction Geometry (126) [116]										
	Intersection/Junction Traffic Control (131) [131]										
	AA DT for Each Intersecting Road (79) [81]										
	AA DT Year (80) [82]										
	Unique Approach Identifier (139) [129]										
<b>INTERCHANGE/RAMP</b>	Unique Interchange Identifier (178) [168]										

ROAD TYPE	*MIRE NAME (MIRE NO.)	NON LOCAL PAVED ROADS - SEGMENT		NON LOCAL PAVED ROADS - INTERSECTION		NON LOCAL PAVED ROADS - RAMPS		LOCAL PAVED ROADS		UNPAVED ROADS	
		STATE	NON-STATE	STATE	NON-STATE	STATE	NON-STATE	STATE	NON-STATE	STATE	NON-STATE
	Location Identifier for Roadway at Beginning of Ramp Terminal (197) [187]										
	Location Identifier for Roadway at Ending Ramp Terminal (201) [191]										
	Ramp Length (187) [177]										
	Roadway Type at Beginning of Ramp Terminal (195) [185]										
	Roadway Type at End Ramp Terminal (199) [189]										
	Interchange Type (182) [172]										
	Ramp AADT (191) [181]										
	Year of Ramp AADT (192) [182]										
	Functional Class (19) [19]										
	Type of Governmental Ownership (4) [4]										
<b>Totals (Average Percent Complete):</b>		<b>77.78</b>	<b>77.78</b>	<b>0.00</b>	<b>0.00</b>	<b>0.00</b>	<b>0.00</b>	<b>44.56</b>	<b>44.56</b>	<b>20.00</b>	<b>20.00</b>

\*Based on Functional Classification (MIRE 1.0 Element Number) [MIRE 2.0 Element Number]

**Describe actions the State will take moving forward to meet the requirement to have complete access to the MIRE fundamental data elements on all public roads by September 30, 2026.**

1. Through the Traffic Records Coordinating Council, we developed an Intersection sub-committee to gather various perspectives of building and maintaining an intersection inventory.
2. TxDOT has built a draft spatial inventory of intersections (i.e., points representing an intersection) inventory and developed a 'crowd-sourcing' application to help build up the attributes for those intersections.
3. TxDOT has purchased an ArcGIS add-in called "Intersection Manager" to help manage intersection data.
4. TxDOT is working with TTI to flesh out the details with an intersection inventory by piloting two counties in Central Texas to determine how to fill the gap between a) TxDOT's automated intersection inventory generation process and b) TTI's recent work on intersection safety analyses.
5. TxDOT has moved our statewide GIS efforts to the Planning division, ensuring additional support for this cross-divisional effort.

## **Optional Attachments**

Program Structure:

2021 HSIP Guidance Final.pdf

2015 HSIP Manual downloaded 20190830 for AR.pdf

2020 HSIP Guidelines Rev1 October 2020.pdf

Project Implementation:

Safety Performance:

Evaluation:

Compliance Assessment:

## Glossary

**5 year rolling average:** means the average of five individuals, consecutive annual points of data (e.g. annual fatality rate).

**Emphasis area:** means a highway safety priority in a State's SHSP, identified through a data-driven, collaborative process.

**Highway safety improvement project:** means strategies, activities and projects on a public road that are consistent with a State strategic highway safety plan and corrects or improves a hazardous road location or feature or addresses a highway safety problem.

**HMVMT:** means hundred million vehicle miles traveled.

**Non-infrastructure projects:** are projects that do not result in construction. Examples of non-infrastructure projects include road safety audits, transportation safety planning activities, improvements in the collection and analysis of data, education and outreach, and enforcement activities.

**Older driver special rule:** applies if traffic fatalities and serious injuries per capita for drivers and pedestrians over the age of 65 in a State increases during the most recent 2-year period for which data are available, as defined in the Older Driver and Pedestrian Special Rule Interim Guidance dated February 13, 2013.

**Performance measure:** means indicators that enable decision-makers and other stakeholders to monitor changes in system condition and performance against established visions, goals, and objectives.

**Programmed funds:** mean those funds that have been programmed in the Statewide Transportation Improvement Program (STIP) to be expended on highway safety improvement projects.

**Roadway Functional Classification:** means the process by which streets and highways are grouped into classes, or systems, according to the character of service they are intended to provide.

**Strategic Highway Safety Plan (SHSP):** means a comprehensive, multi-disciplinary plan, based on safety data developed by a State Department of Transportation in accordance with 23 U.S.C. 148.

**Systematic:** refers to an approach where an agency deploys countermeasures at all locations across a system.

**Systemic safety improvement:** means an improvement that is widely implemented based on high risk roadway features that are correlated with specific severe crash types.

**Transfer:** means, in accordance with provisions of 23 U.S.C. 126, a State may transfer from an apportionment under section 104(b) not to exceed 50 percent of the amount apportioned for the fiscal year to any other apportionment of the State under that section.