



October 13, 2023

Historic Columbia River Highway State Trail - Mitchell Point Crossing

Project Scope: tunneling, grading, masonry, asphalt paving, concrete paving, sign systems, striping, landscaping, structures, and rockfall protection. Current construction activities are highlighted below:

Project Number:

OR DOT CRGNSA 100(4)

FHWA Contact:

Austin Armstrong

Project Engineer

austin.armstrong@dot.gov

(360) 216-9631

Hood River Field Office

700 E. Port Marina Way

Suite 201

Hood River, OR 97031

Project Partners:

Oregon DOT

Forest Service

Oregon Parks & Recreation Dept

Contractor:

Crestline Construction Co. LLC

The Dalles, Oregon

Work Hours:

Mon-Fri: 7:00 am– 3:30 pm

Notice to Proceed:

January 13, 2021

Approx. Completion:

June 4, 2024



U.S. Department
of Transportation

**Federal Highway
Administration**

Culvert Excavation



Below: Drainage Excavation in East Bench



Source of Photos: FHWA

Project Website: <https://highways.dot.gov/federal-lands/projects/or/dot-crgnsa-100-4>

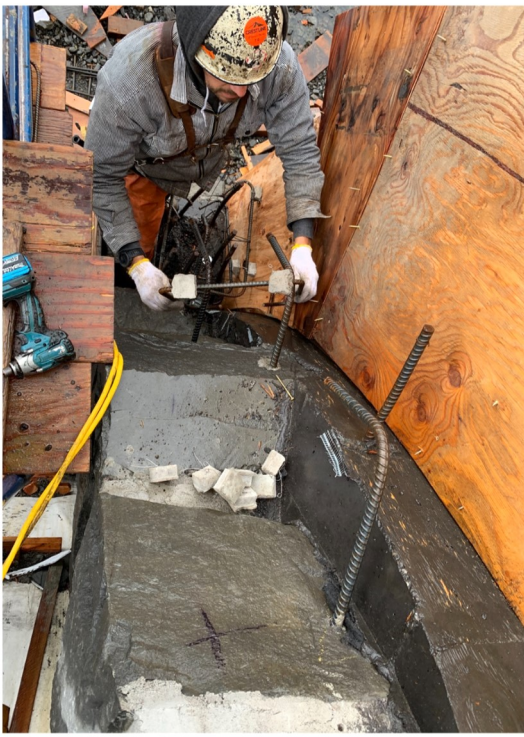
Western Federal Lands Highway Division

Historic Columbia River Highway State Trail - Mitchell Point Crossing



Construction Highlights

October 13, 2023



Rebar and Forming of Parapet Wall on West Portal

Ground Excavation and Grading Operations at West Parking Lot



Source of Photos: FHWA



The lookout exit
at Mitchell Point is closed
until further notice.

Source: Google Maps

Project Website: <https://highways.dot.gov/federal-lands/projects/or/dot-crnsa-100-4>

Western Federal Lands Highway Division