



All Images Source: FHWA

September 15, 2023

Project Number:

MT PRA GLAC 10(45)

FHWA Contact:

Taylor Aponte

Taylor.Aponte@dot.gov

Project Partners:

Glacier National Park

Contractor:

Brice Civil Constructors

Anchorage, AK

Notice to Proceed:

June 10, 2022

Fixed Completion Date:

August 30, 2024

**Rehabilitation of 9.3 miles of Going to the Sun Road
and Replace Bridge over McDonald Creek
Construction Activities & Upcoming Work**

Project Description:

This project is being administered by the Federal Highway Administration’s Western Federal Lands Highway Division, in partnership with Glacier National Park. The project will replace the current multi-span McDonald Creek Bridge with a clear span bridge. The project also includes curve widening, milling, and repaving of the 9.3 miles of the Going-to-the-Sun Road (GTSR) from Apgar to North McDonald; along with installing conduit for future fiber lines from Grinnell Drive through Apgar curve; and Apgar to the new Camas Entrance Station.



Surface Conditions:

Newly paved surface starting at Apgar for roughly the first two miles. Gravel surfaces expected on the remaining 7.3 miles of road between Apgar and North McDonald Road. All turnouts will be closed for public use. Motorcycles and Bikes use extreme caution.



Current and Upcoming Work:

North McDonald Bridge— Abutment 2 pile cap has been formed and poured. The pile cap will be cured over the next 7 days and forms will be stripped sometime next week. Abutment 1 pile cap has been rejected and is undergoing demolition process. The replacement pile cap is scheduled to be formed and poured next week.

GTSR— Paving has begun on GTSR starting at Apgar. A roadway maintenance and finish grading operation precede the paving operation. Continuous maintenance and paving operations anticipated throughout September.



Traffic Delays:

North McDonald Road remains closed to all general vehicular and foot traffic. Anticipate up to 30 minute delays on sections open to the general public. Night time blading and paving operations are occurring at this time.

***The Storm Water Pollution Prevention Plan (SWPPP) for this project is available for viewing at the Project Office of the Contractor at the West Ballfield. See SWPPP information posted at the Construction Info Turnout past the West Entrance Station.**



U.S. Department of Transportation

Federal Highway Administration

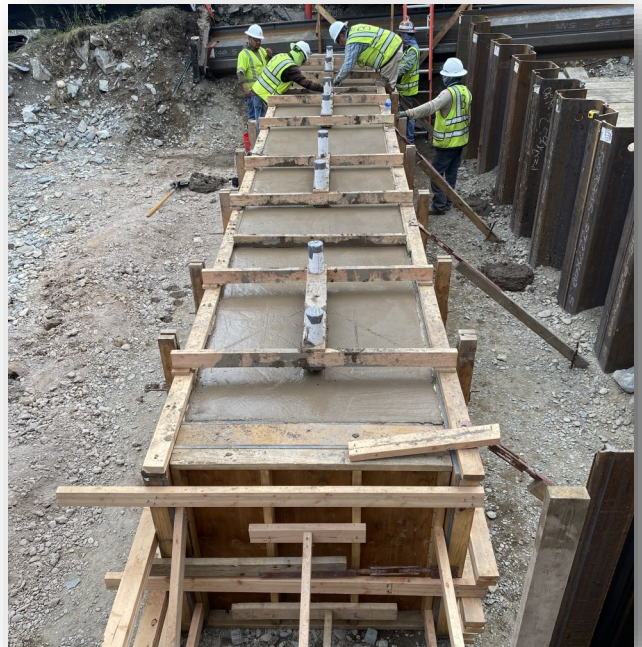
Project Website: [Rehabilitate Final 9.3 miles of the Going-to-the-Sun Road & Replace Bridge](#)

Western Federal Lands Highway Division



Removal of Abutment 1 Pile Cap

Freshly Poured Concrete at Abutment 2



Paving Test Strip on GTSR