



August 19, 2022

Historic Columbia River Highway State Trail, Mitchell Point Crossing

Type of construction includes: tunneling, grading, asphalt paving, concrete paving, signing, striping, landscaping, structures, and rockfall protection

Project Number:

OR DOT CRGNSA 100(4)

FHWA Contact:

Austin Armstrong
 Project Engineer
 Austin.armstrong@dot.gov
 (360) 216-9631
 Hood River Field Office
 700 E. Port Marina Way
 Suite 201
 Hood River, OR 97031

Project Partners:

Oregon DOT
 Forest Service
 Oregon Parks & Recreation
 Department

Contractor:

Crestline Construction Co. LLC
 The Dalles, Oregon
 LRL Construction Company, Inc.
 Tillamook, Oregon

Notice to Proceed:

January 13, 2021

Approx. Completion:

July 13, 2023



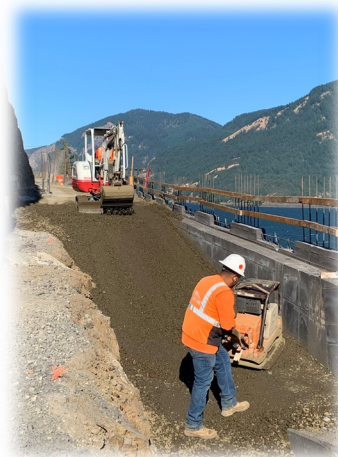
U.S. Department
 of Transportation

**Federal Highway
 Administration**

Three below: East Bench structure concrete form and rebar



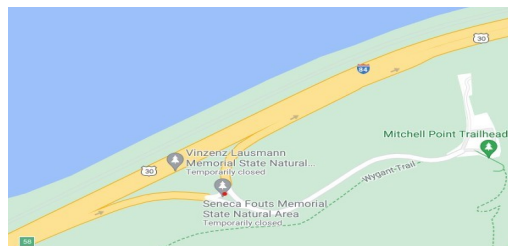
Left & Below: Backfill and compaction on East bench



(All images) Source: FHWA



Source:
 Google Maps



The lookout exit will be closed at Mitchell Point until further notice, see Google Map left, for location.

The Contractors' work hours are: Monday - Friday from 7:00am - 3:30pm.

Project Website: <https://highways.dot.gov/federal-lands/projects/or/dot-crgnsa-100-4>

Western Federal Lands Highway Division