



June 24, 2022

Historic Columbia River Highway State Trail, Mitchell Point Crossing

Type of construction includes: tunneling, grading, asphalt paving, concrete paving, signing, striping, landscaping, structures, and rockfall protection

Project Number:

OR DOT CRGNSA 100(4)

FHWA Contact:

Austin Armstrong
Project Engineer
Austin.armstrong@dot.gov
(360) 216-9631
Hood River Field Office
700 E. Port Marina Way
Suite 201
Hood River, OR 97031

Project Partners:

Oregon DOT
Forest Service
Oregon Parks & Recreation
Department

Contractor:

Crestline Construction Co. LLC
The Dalles, Oregon
LRL Construction Company, Inc.
Tillamook, Oregon

Notice to Proceed:

January 13, 2021

Approx. Completion:

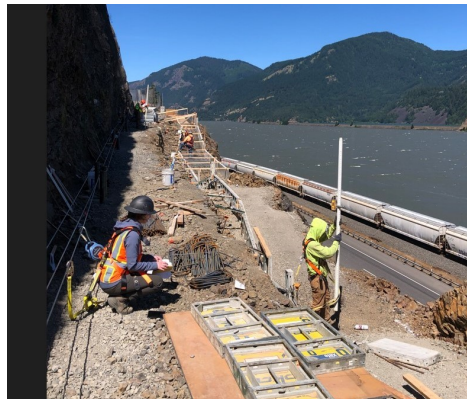
July 13, 2023



U.S. Department
of Transportation

**Federal Highway
Administration**

East Wall W2 excavation inspection—
Grade check



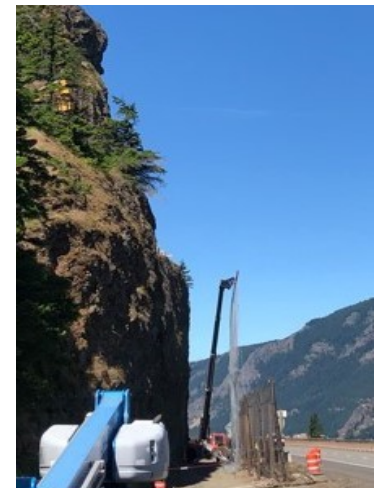
East Wall W2 Excavation and formwork



East Wall W2 Excavation and Formwork



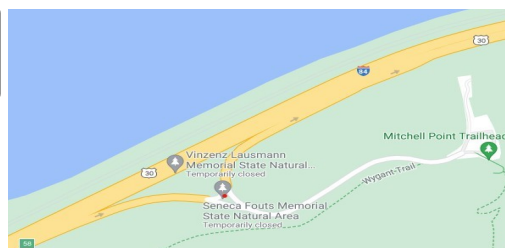
Rockfall containment net



(All images) Source: FHWA



Source:
Google Maps



The lookout exit will be closed at Mitchell Point until further notice, see Google Map left, for location.

The Contractors' work hours are: Monday - Friday from 7:00am - 3:30pm.

Project Website: <https://highways.dot.gov/federal-lands/projects/or/dot-crgnsa-100-4>

Western Federal Lands Highway Division