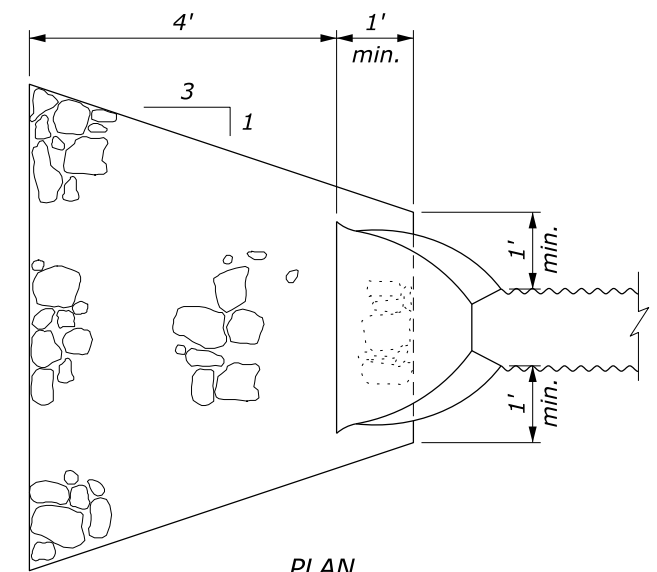
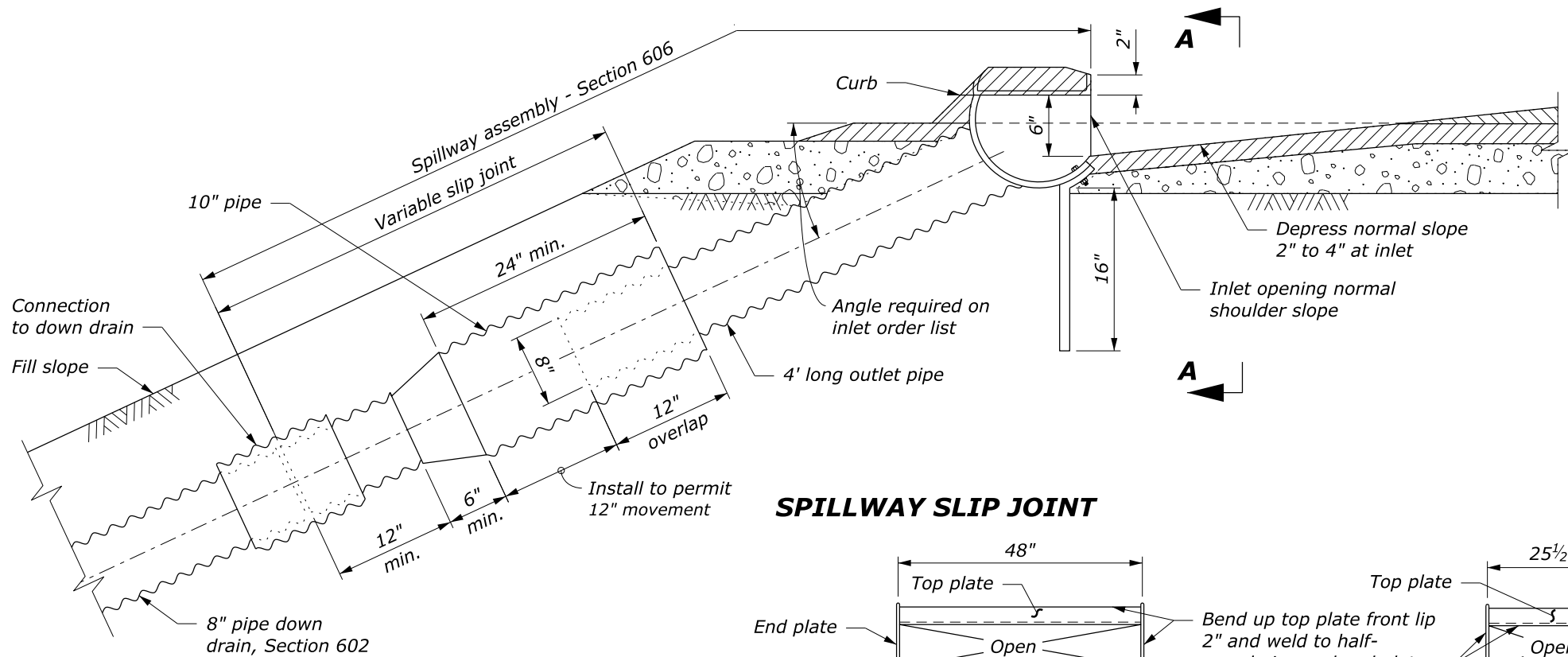
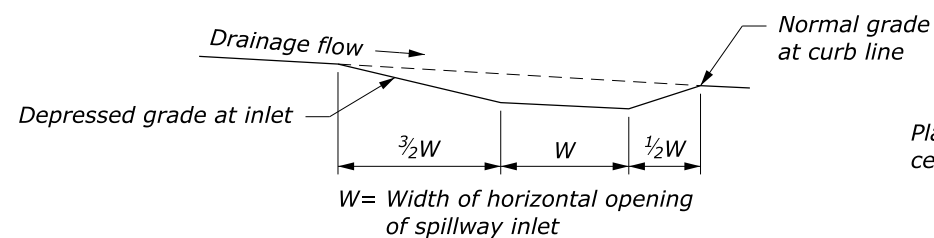


**NOTE:**

1. Fabricate half-round pipe, outlet pipe, and curtain wall for spillway assembly from 0.64-inch galvanized steel or 0.60-inch aluminum. Fabricate top plate and end plate from 0.18-inch flat steel or 0.20 inch aluminum plate.
2. Make all coupling band connections watertight by placing a  $\frac{3}{16}$  - inch bead of approved caulking under each half of the band before tightening.
3. Install pipe anchor assemblies at 10 feet  $\pm$  spacing on down drain installed above ground.
4. Use type 2 spillway assembly inlets where profile grades are greater than 2%. Use type 1 on grades 2% or flatter.
5. Place class 2 riprap conforming to Section 251 for protective apron.
6. Approved alternate designs may be used.
7. See Standard W606-14 for Pipe Anchor Assembly Detail.

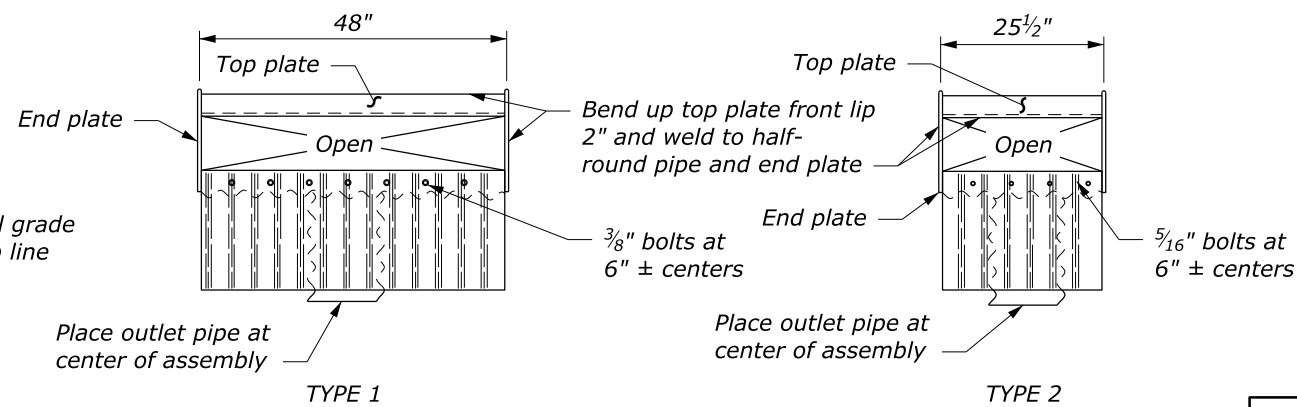


PLAN  
**PROTECTIVE APRON**



**SCHEMATIC PROFILE OF INLET BASIN**

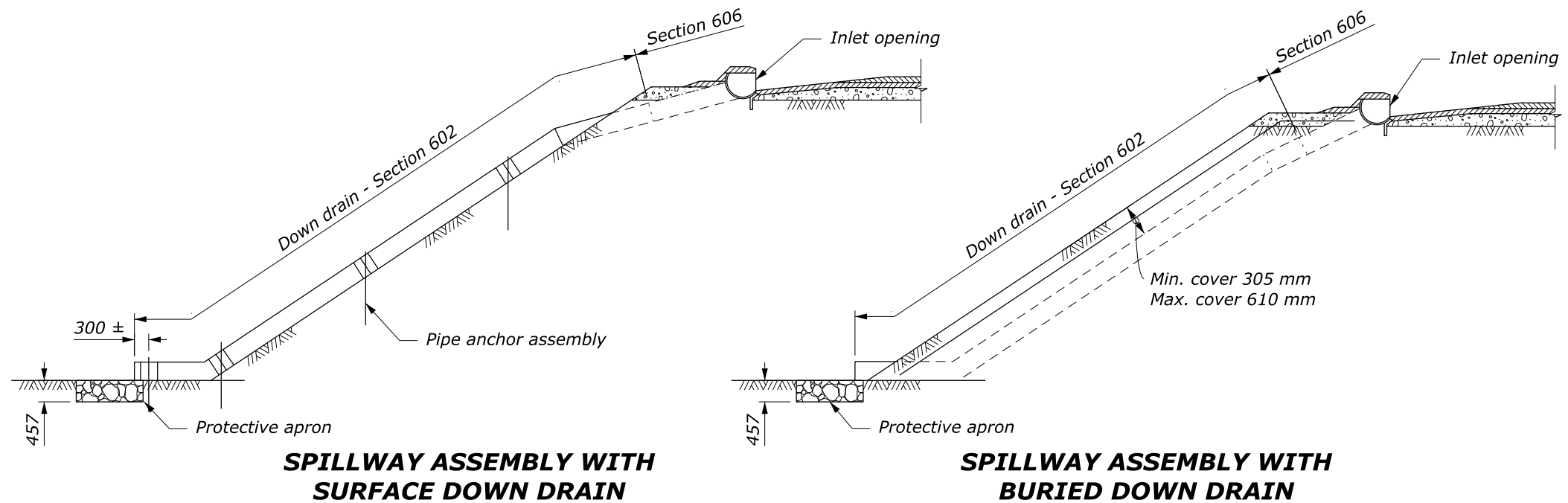
**SPILLWAY SLIP JOINT**



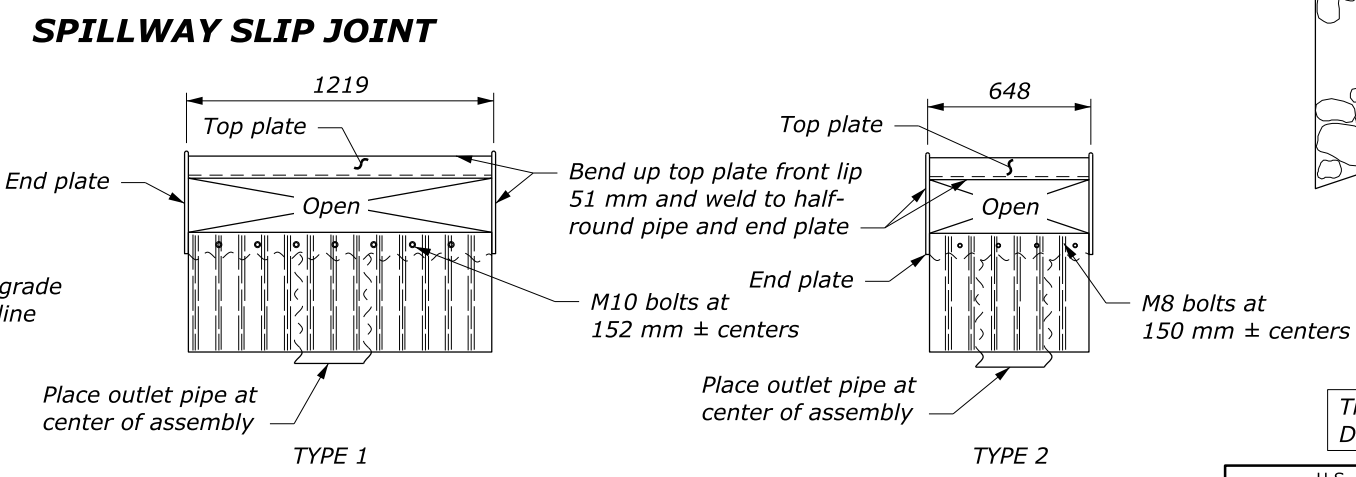
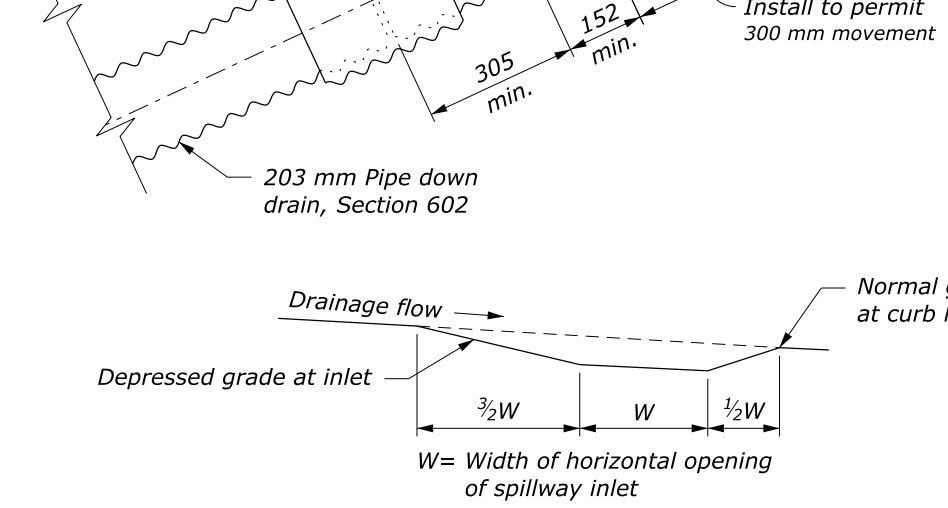
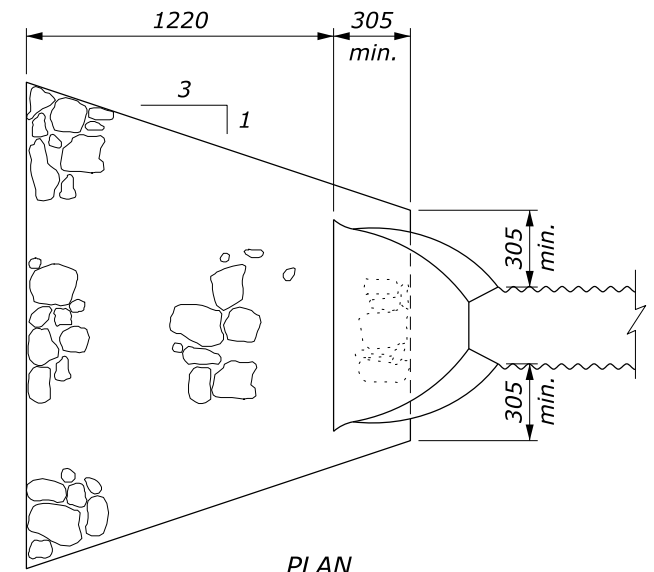
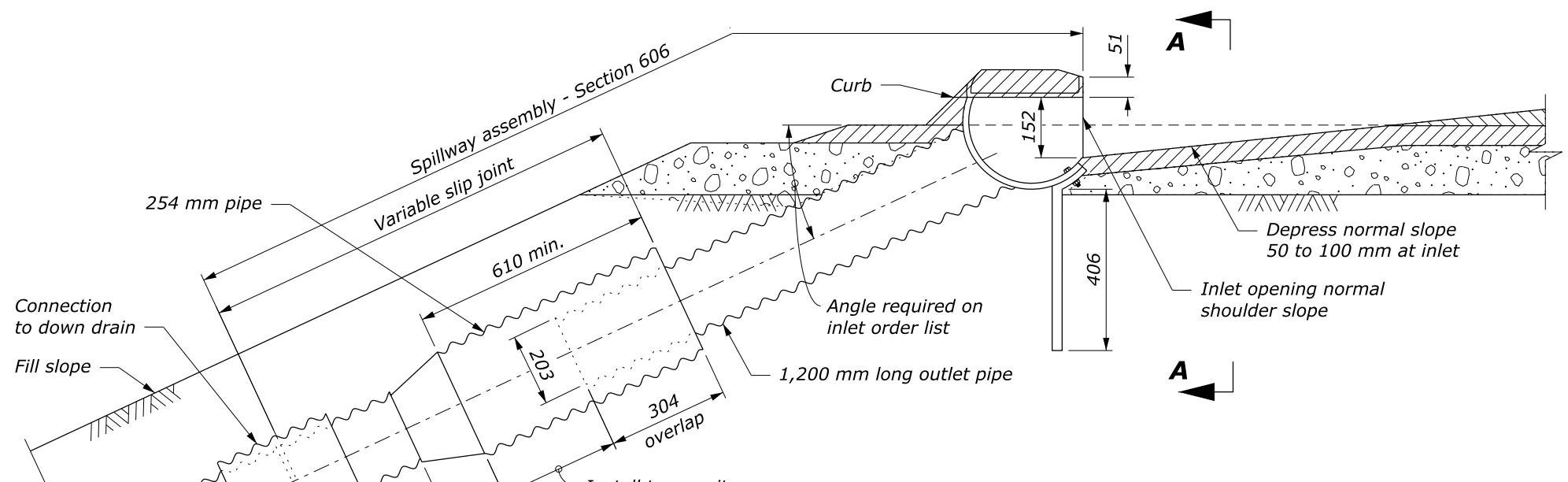
SECTION A-A  
**SPILLWAY ASSEMBLY INLETS**

NO SCALE

U.S. DEPARTMENT OF TRANSPORTATION, FHWA OFFICE OF FEDERAL LANDS HIGHWAY	WFL STANDARD W606-13
<b>CORRUGATED METAL SPILLWAYS AND INLETS</b>	SPECIFICATION FP-24, FP-14
	APPROVED FOR USE 10/2009



- NOTE:**
1. Fabricate half-round pipe, outlet pipe, and curtain wall for spillway assembly from 1.6-mm galvanized steel or 1.5-mm aluminum. Fabricate top plate and end plate from 4.6-mm flat steel or 5.0-mm aluminum plate.
  2. Make all coupling band connections watertight by placing a 5-mm bead of approved caulking under each half of the band before tightening.
  3. Install pipe anchor assemblies at 3 meters ± spacing on down drain installed above ground.
  4. Use type 2 spillway assembly inlets where profile grades are greater than 2%. Use type 1 on grades 2% or flatter.
  5. Place class 2 riprap conforming to Section 251 for protective apron.
  6. Approved alternate designs may be used.
  7. See Standard WM606-14 for Pipe Anchor Assembly Detail.
  8. Furnish hardware in the metric sizes shown. Equivalent US Customary sizes may be used when metric sizes are unavailable.



This drawing contains **Metric** units of measure. Dimensions without units are millimeters.

U.S. DEPARTMENT OF TRANSPORTATION, FHWA OFFICE OF FEDERAL LANDS HIGHWAY	WFL STANDARD WM606-13
<b>CORRUGATED METAL SPILLWAYS AND INLETS</b>	SPECIFICATION FP-24, FP-14
	APPROVED FOR USE 10/2009

NO SCALE

c:\pwwork\dms0074\W606-13.dgn [S:\d WM606-13] 17 March 2025 2:34 PM