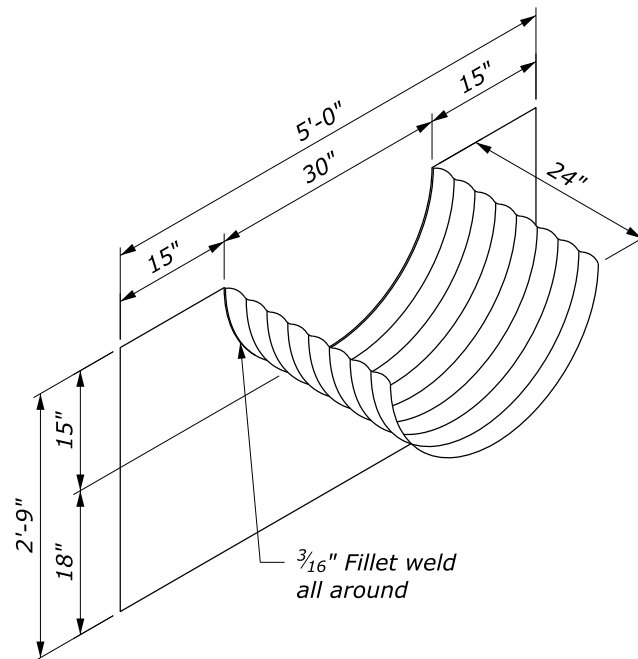


Dimensions shown are subject to field adjustment to fit existing conditions

PLAN

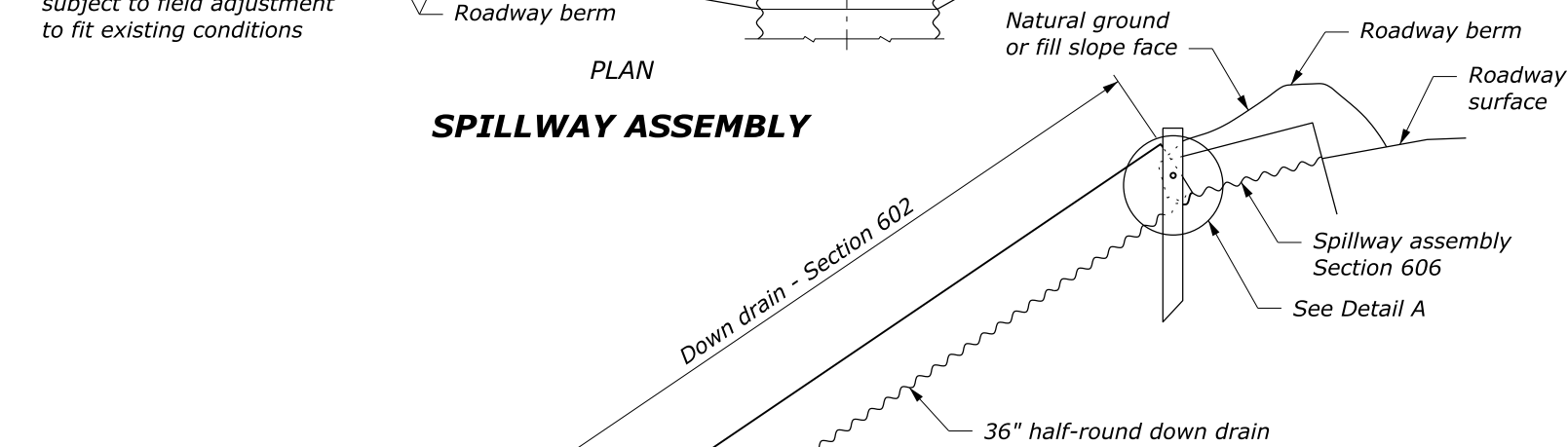
**SPILLWAY ASSEMBLY**



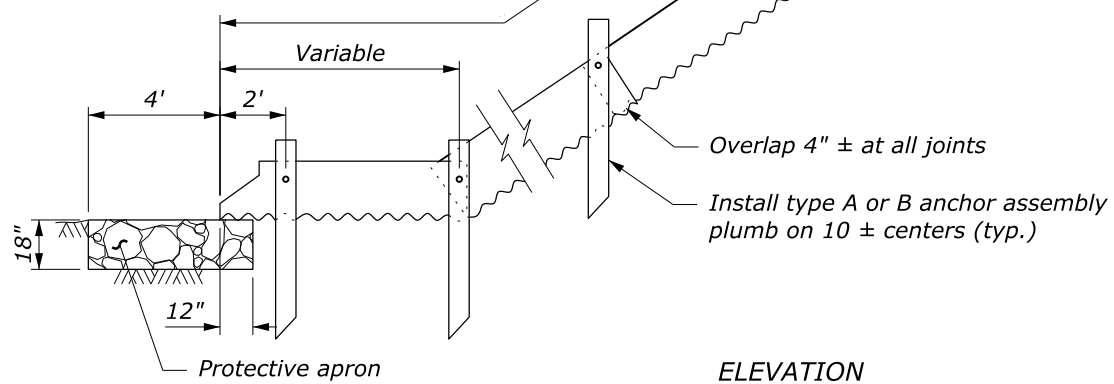
**SPILLWAY ASSEMBLY**

**NOTE:**

1. Fabricate spillway assembly from 0.064-inch thick galvanized steel or 0.060-inch aluminum.
2. Place Class 2 riprap conforming to Section 251 for protective apron.
3. Construct down drain from annular corrugated pipe, or from helically corrugated pipe with factory annular or flanged reformed ends.
4. Approved alternate designs may be used.

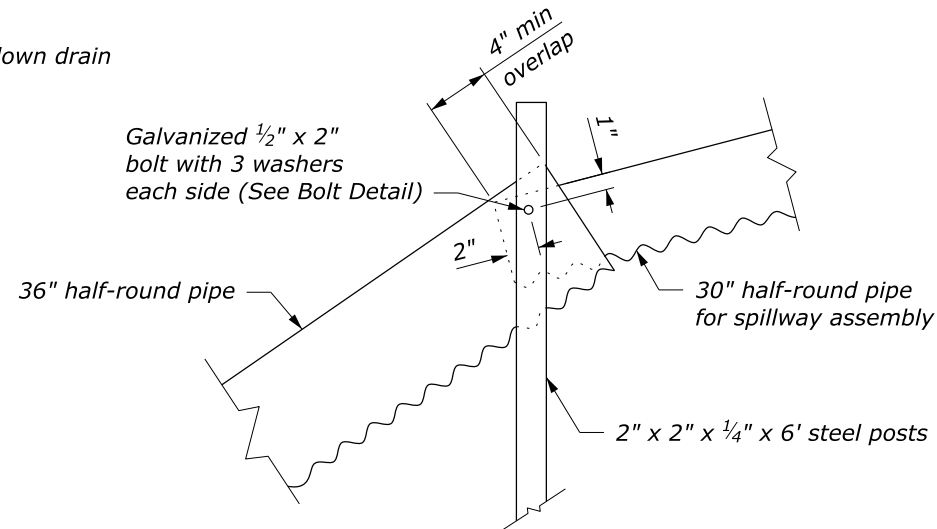


36" half-round down drain

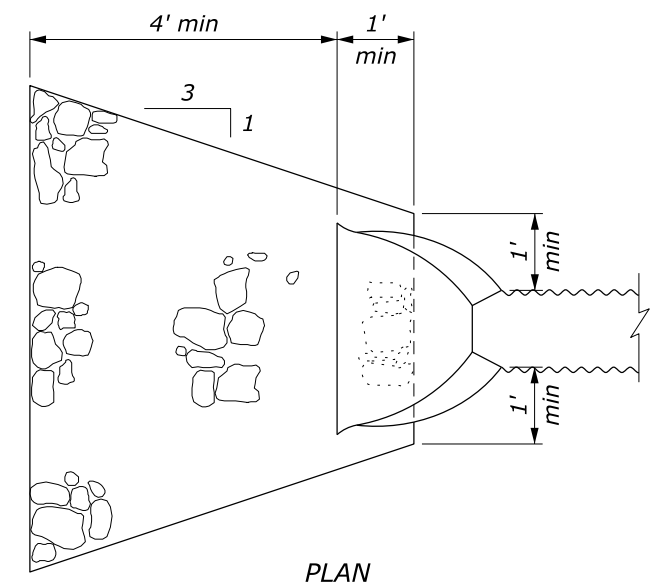


ELEVATION

**SPILLWAY ASSEMBLY AND DOWN DRAIN**

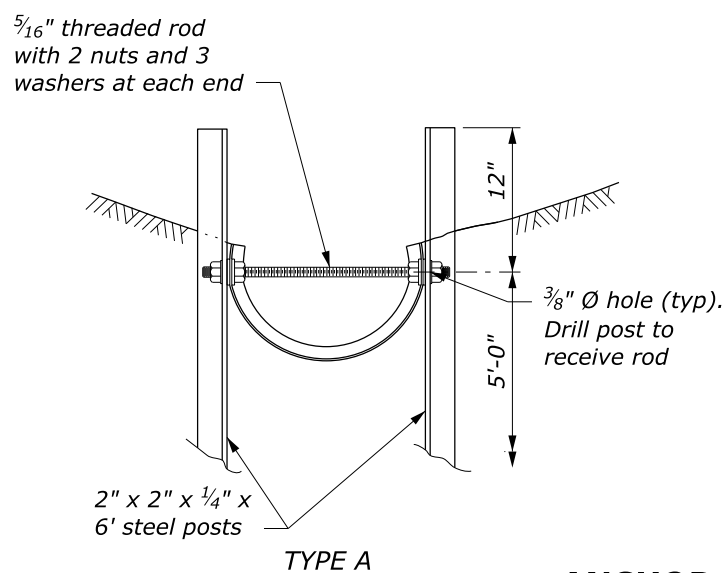


**DETAIL A**



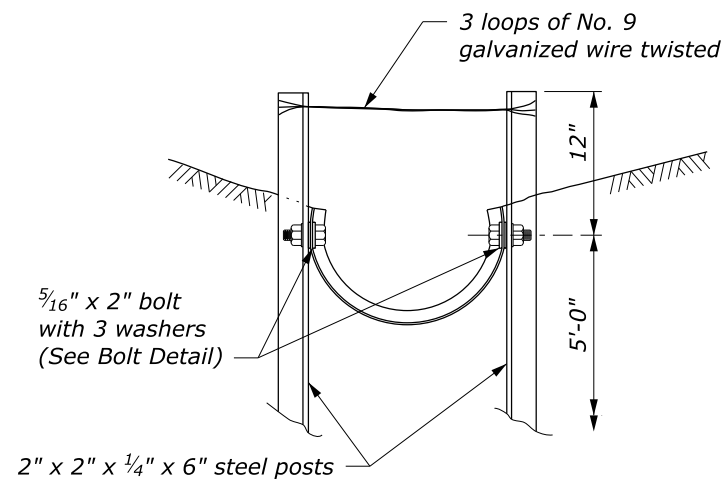
PLAN

**PROTECTIVE APRON**

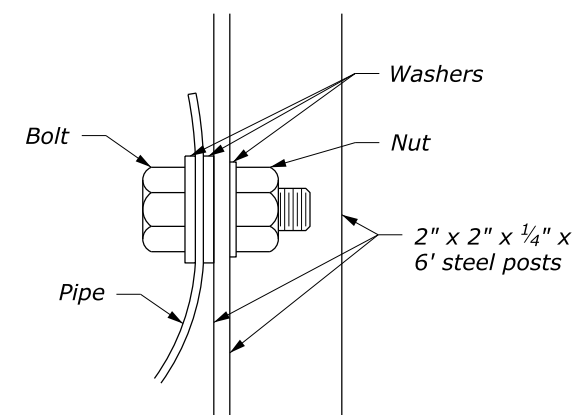


TYPE A

**ANCHOR ASSEMBLY**



TYPE B



**BOLT DETAIL**

NO SCALE

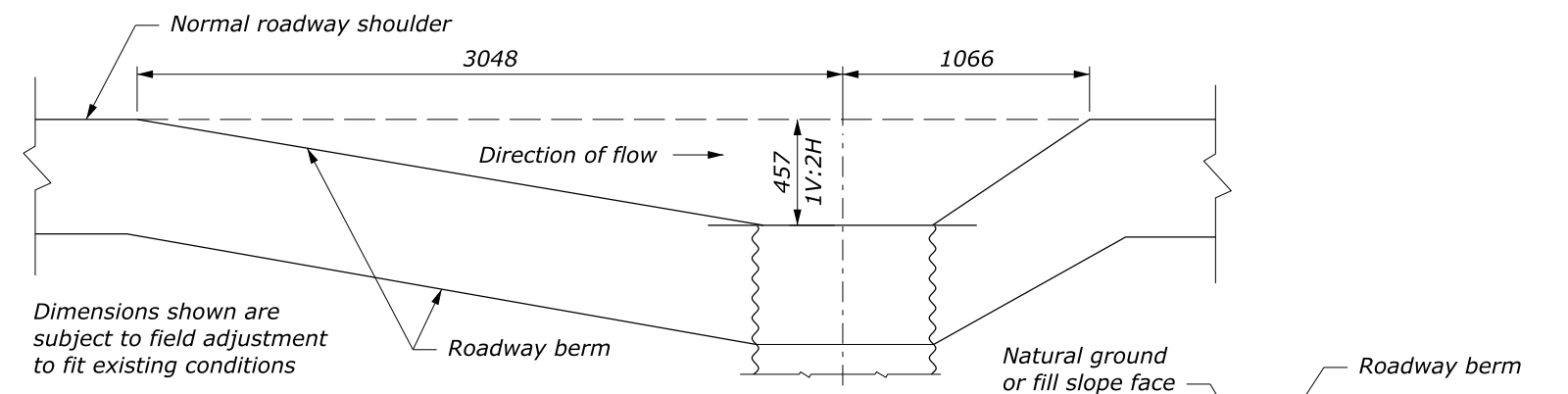
U.S. DEPARTMENT OF TRANSPORTATION, FHWA  
OFFICE OF FEDERAL LANDS HIGHWAY

**SPILLWAY ASSEMBLY WITH  
HALF-ROUND DOWN DRAIN**

WFL STANDARD  
W606-12

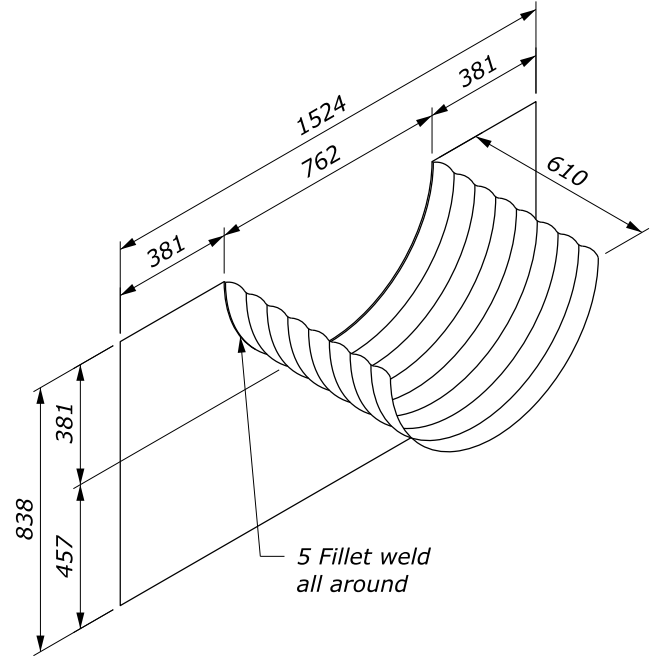
SPECIFICATION  
FP-24, FP-14

APPROVED FOR USE  
10/2009



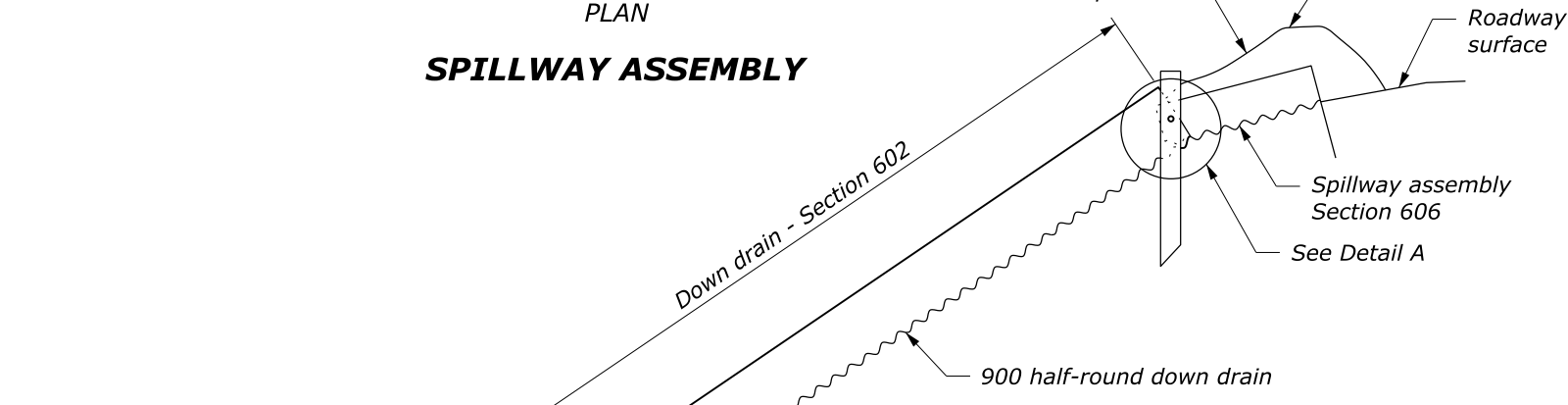
Dimensions shown are subject to field adjustment to fit existing conditions

**SPILLWAY ASSEMBLY**

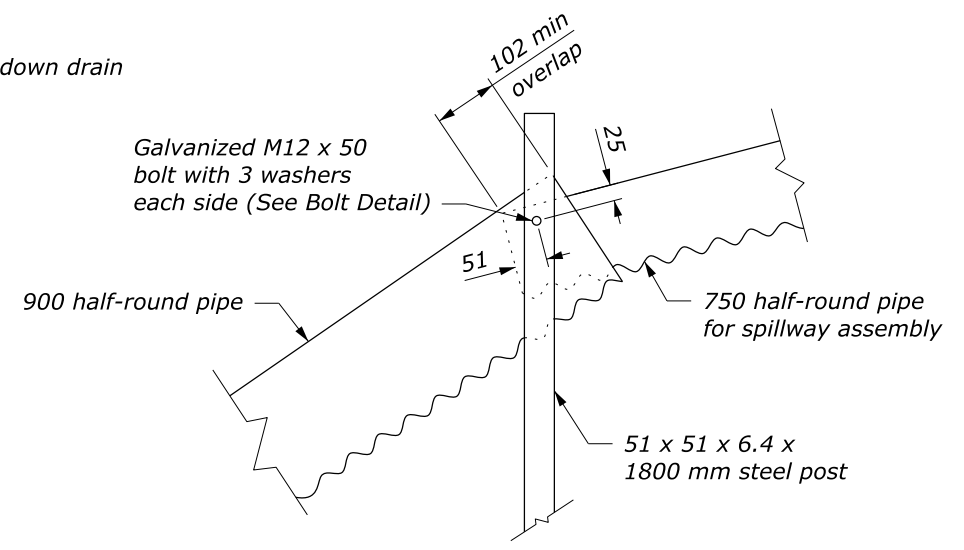
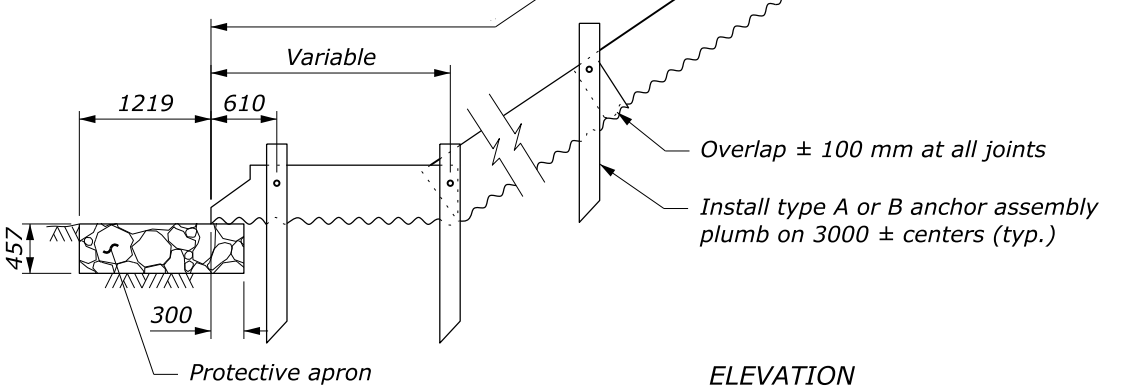


**SPILLWAY ASSEMBLY**

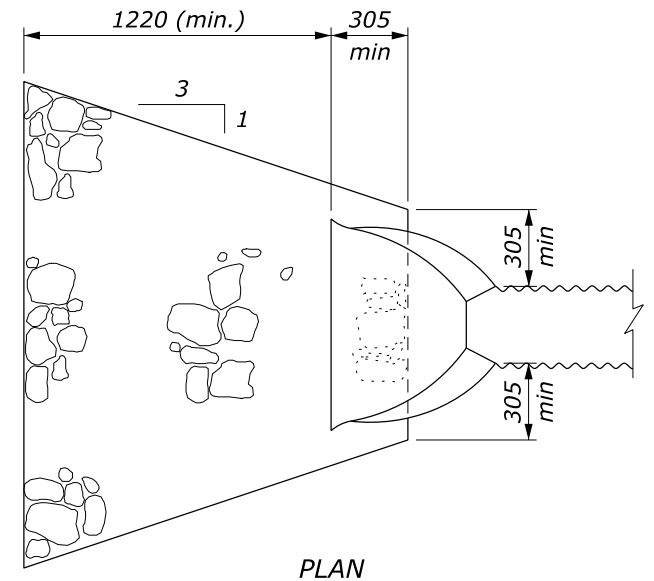
- NOTE:**
1. Fabricate spillway assembly from 1.6 mm thick galvanized steel or 1.5 mm aluminum.
  2. Place Class 2 riprap conforming to Section 251 for protective apron.
  3. Construct down drain from annular corrugated pipe, or from helically corrugated pipe with factory annular or flanged reformed ends.
  4. Approved alternate designs may be used.
  5. Furnish hardware in the metric sizes shown. Equivalent US Customary sizes may be used when metric sizes are unavailable.



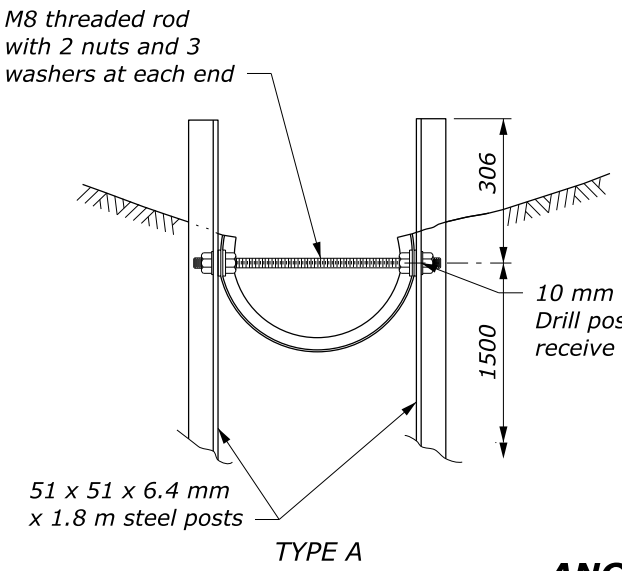
**SPILLWAY ASSEMBLY AND DOWN DRAIN**



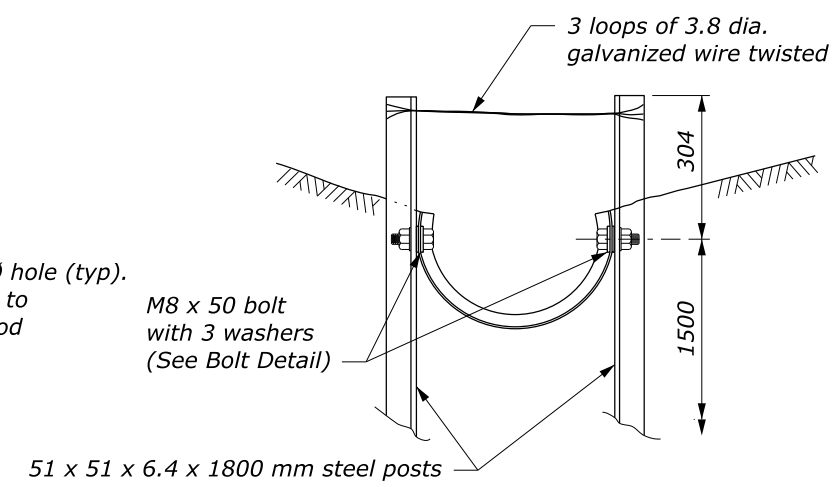
**DETAIL A**



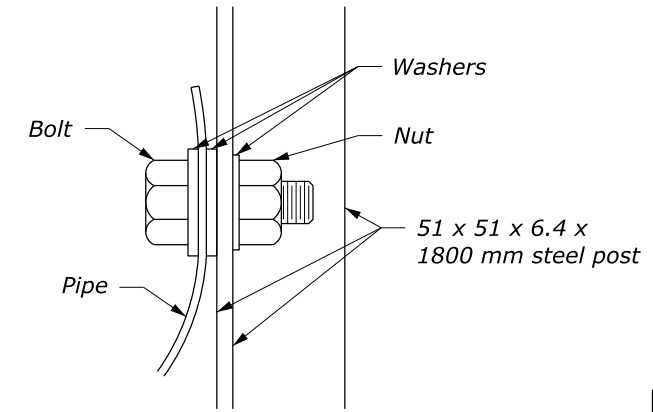
**PROTECTIVE APRON**



**ANCHOR ASSEMBLY**



**TYPE B**



**BOLT DETAIL**

This drawing contains **Metric** units of measure. Dimensions without units are millimeters.

U.S. DEPARTMENT OF TRANSPORTATION, FHWA OFFICE OF FEDERAL LANDS HIGHWAY	WFL STANDARD WM606-12
<b>SPILLWAY ASSEMBLY WITH HALF-ROUND DOWN DRAIN</b>	SPECIFICATION FP-24, FP-14
	APPROVED FOR USE 10/2009

NO SCALE

c:\pwwork\dms00747\W606-12.dgn [S:\d WM606-12] 14 March 2025 9:44 AM