

ELEVATION

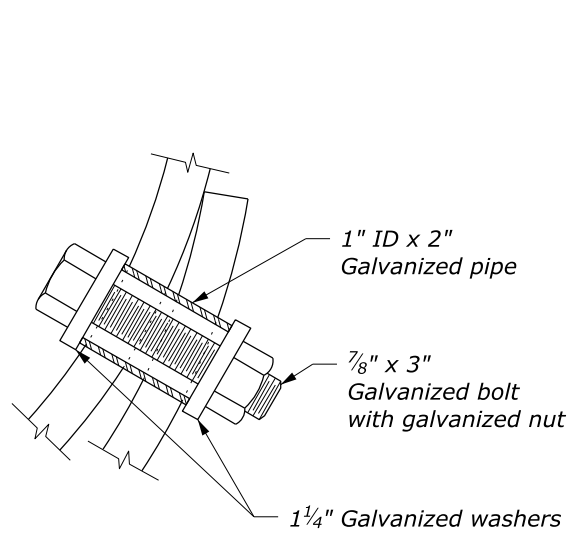
**SPILLWAY ASSEMBLY WITH DOWN DRAIN
OUTLET ON NON-ERODIBLE MATERIAL**

ELEVATION

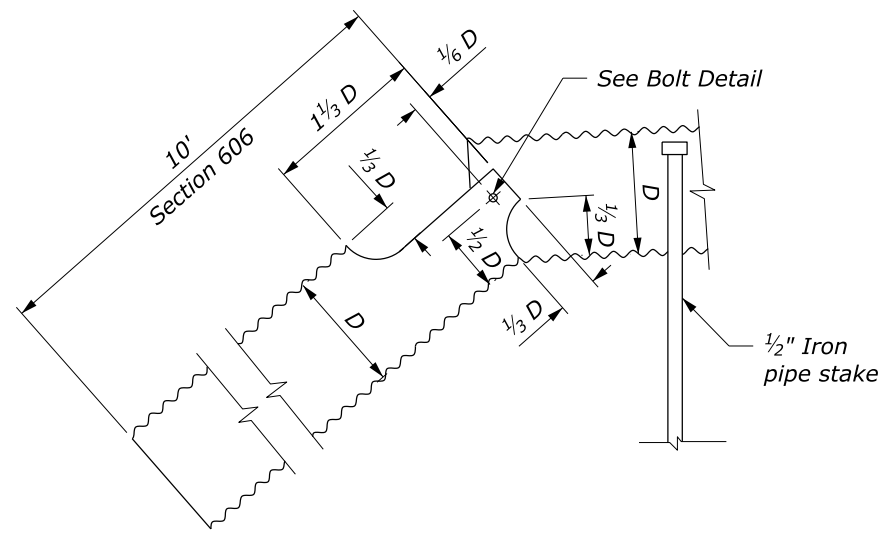
**SPILLWAY ASSEMBLY WITH DOWN DRAIN
OUTLET ON ERODIBLE MATERIAL**

NOTE:

1. Fabricate spillway assembly from annular corrugated pipe, or from helically corrugated pipe with factory annular or reformed ends. Use 0.064-inch galvanized steel or 0.060-inch aluminum.
2. Make all banded connections water tight by placing $\frac{3}{16}$ -inch bead of approved caulking under each half of the band before tightening.
3. Payment for tee branch connection under Section 602 is included in the linear measurement for culvert pipe for the applicable sizes. Measure Tee Branch connections along the top of the Tee.
4. Place Class 2 riprap conforming to Section 251 for protective apron.
5. Approved alternate designs may be used.
6. See Standard W606-14 for Pipe Anchor Assembly Detail.

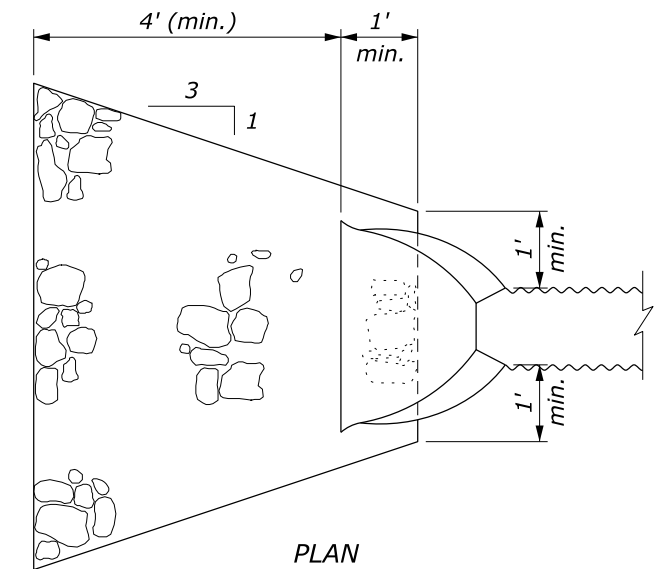


BOLT DETAIL



D = Diameter of culvert

SPILLWAY ASSEMBLY



PROTECTIVE APRON

NO SCALE

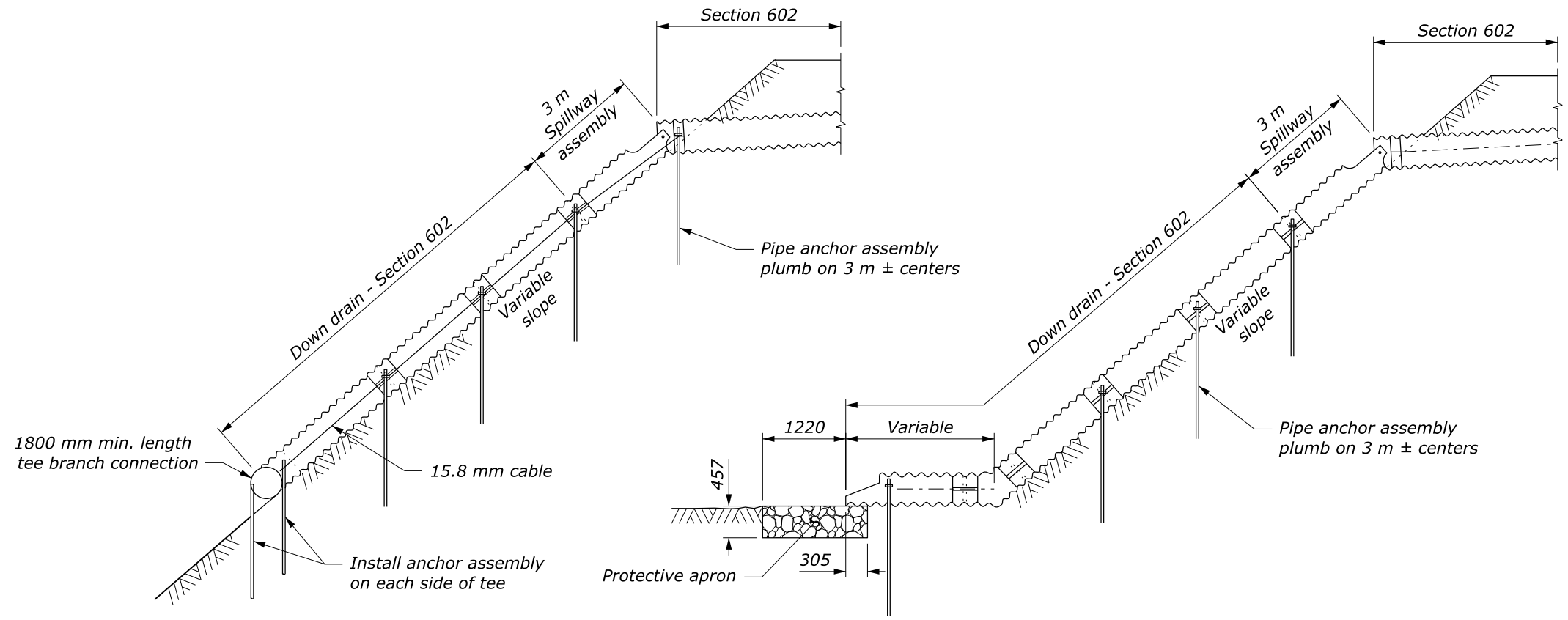
U.S. DEPARTMENT OF TRANSPORTATION, FHWA
OFFICE OF FEDERAL LANDS HIGHWAY

**SPILLWAY ASSEMBLY
WITH DOWN DRAIN**

WFL STANDARD
W606-10

SPECIFICATION
FP-24, FP-14

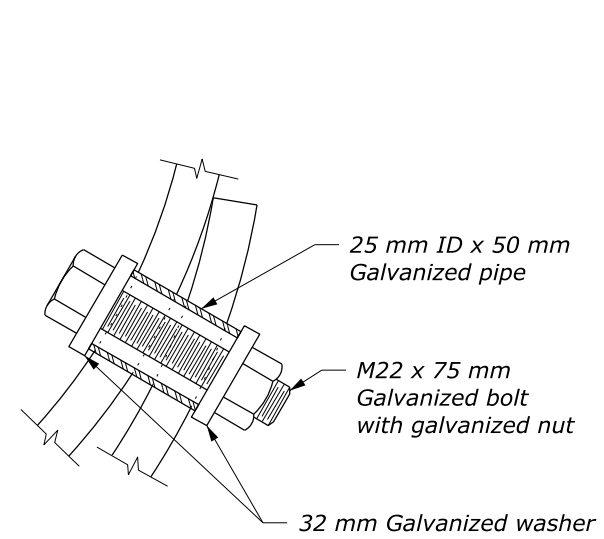
APPROVED FOR USE
4/2009



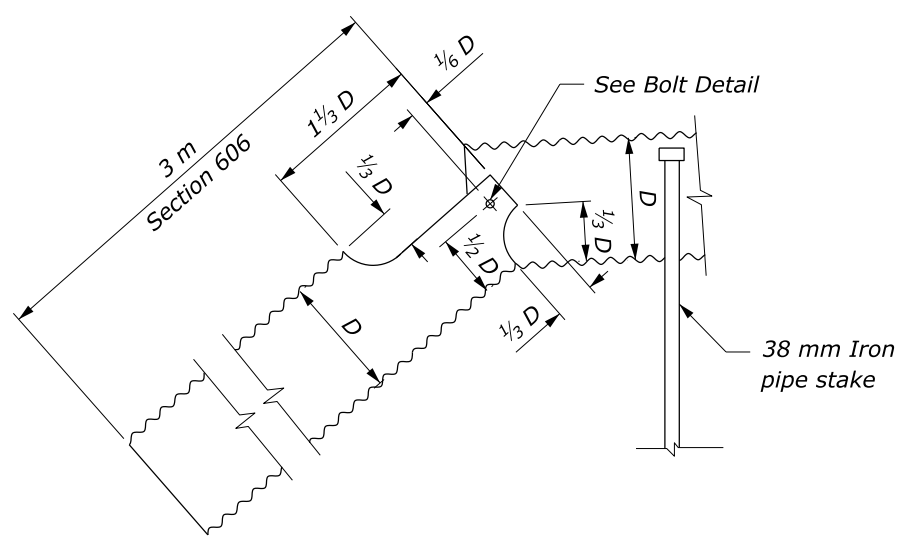
ELEVATION
**SPILLWAY ASSEMBLY WITH DOWN DRAIN
 OUTLET ON NON-ERODIBLE MATERIAL**

ELEVATION
**SPILLWAY ASSEMBLY WITH DOWN DRAIN
 OUTLET ON ERODIBLE MATERIAL**

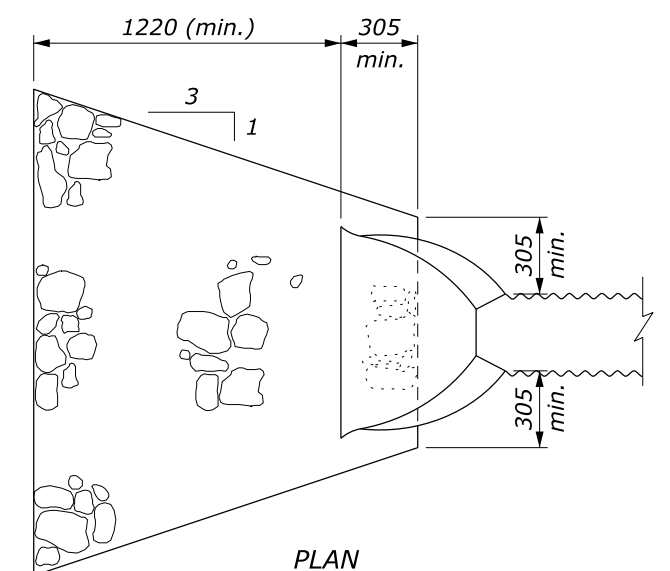
- NOTE:**
1. Fabricate spillway assembly from annular corrugated pipe, or from helically corrugated pipe with factory annular or reformed ends. Use 1.6 mm galvanized steel or 1.5 mm aluminum.
 2. Make all banded connections water tight by placing 5 mm bead of approved caulking under each half of the band before tightening.
 3. Payment for tee branch connection under Section 602 is included in the linear measurement for culvert pipe for the applicable sizes. Measure Tee Branch connections along the top of the Tee.
 4. Place Class 2 riprap conforming to Section 251 for protective apron.
 5. Approved alternate designs may be used.
 6. See Standard WM606-14 for Pipe Anchor Assembly Detail.
 7. Furnish hardware in the metric sizes shown. Equivalent US Customary sizes may be used when metric sizes are unavailable.



BOLT DETAIL



D = Diameter of culvert
SPILLWAY ASSEMBLY



PROTECTIVE APRON

This drawing contains **Metric** units of measure. Dimensions without units are millimeters.

U.S. DEPARTMENT OF TRANSPORTATION, FHWA OFFICE OF FEDERAL LANDS HIGHWAY	WFL STANDARD WM606-10
SPILLWAY ASSEMBLY WITH DOWN DRAIN	SPECIFICATION FP-24, FP-14
	APPROVED FOR USE 4/2009

NO SCALE