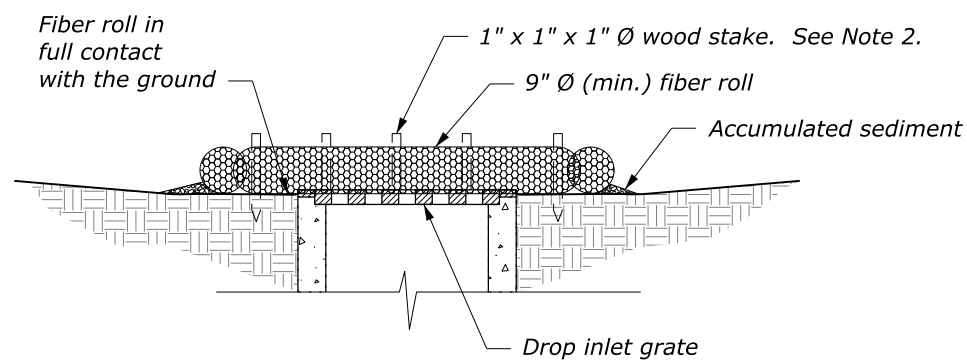
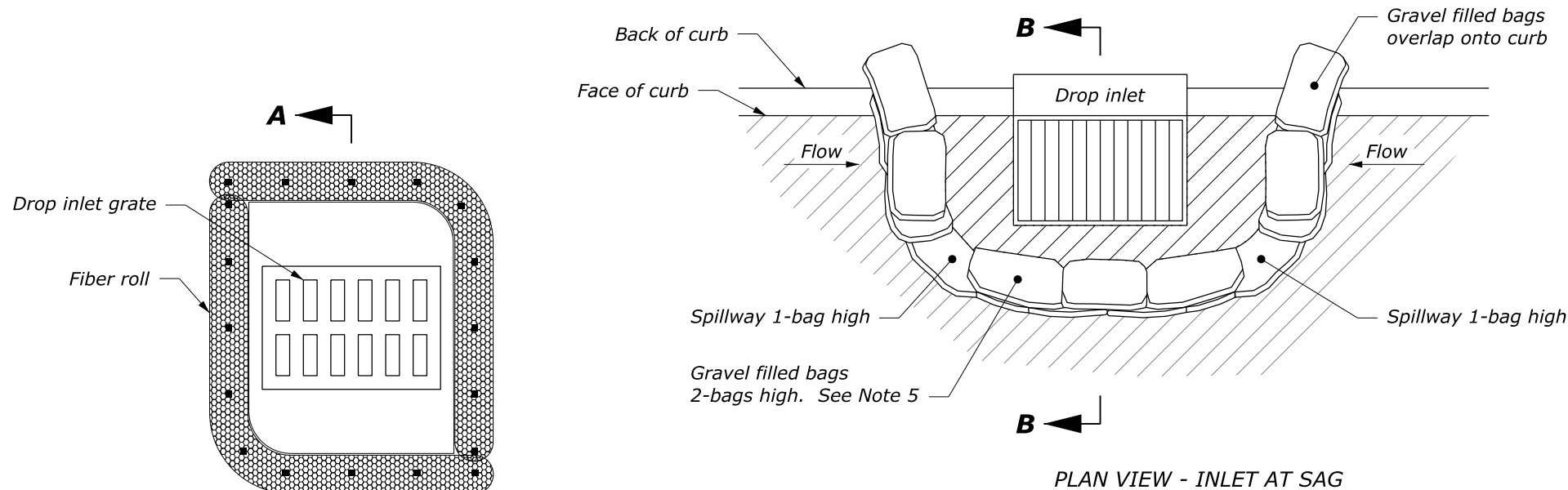
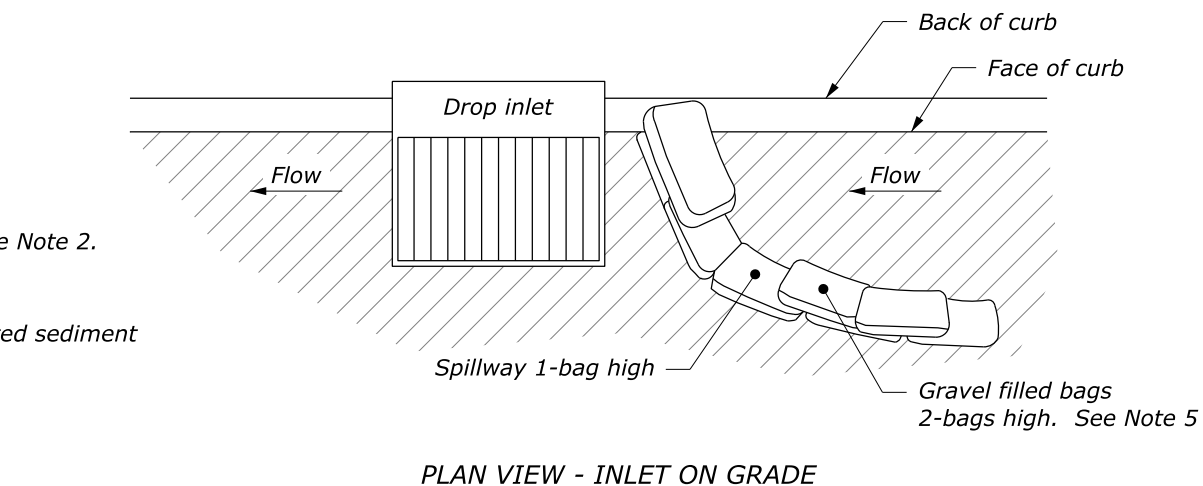


NOTE:

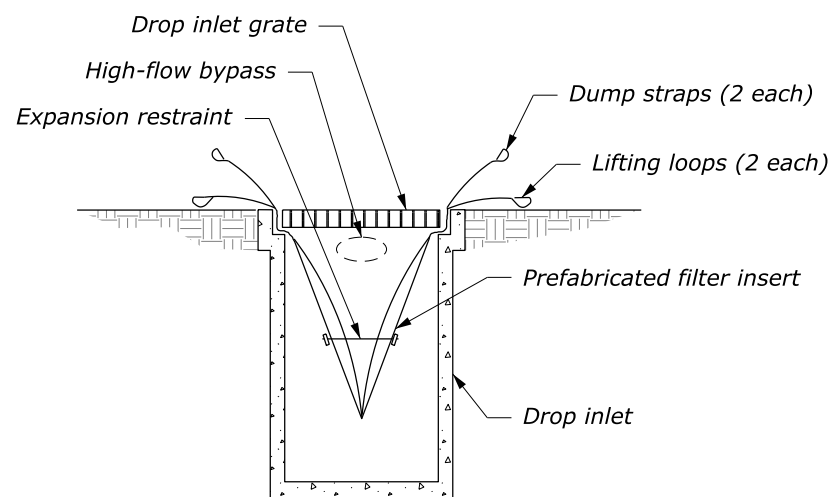
1. Select the inlet protection device to fit field conditions as approved.
2. Install fiber rolls with stakes spaced no more than 24-inches on center. Drive stakes 12-inches (min.) in undisturbed soil.
3. Approximate finished dimension of gravel bags is 12-inches x 18-inches.
4. Maximum top of gravel bag spillway elevation = Top of curve minus 1-inch.
5. Pack gravel filled bags tightly together end to end to ensure no sediment flows between or underneath the bags. Where tight fit is unachievable, install geotextile filter, class 2, type C along the upstream face of the bags. Place fabric over the top of the bags to the spillway elevation. Anchor the fabric by placing the next layer of bags on top of it. Extend the geotextile fabric a minimum of 18-inches upstream of the bags. Cover geotextile fabric to the top of the fabric with clean, silt-free coarse aggregate between 2 and 3-inches in diameter.
6. Size the prefabricated filter insert (Type C) to fit the drop inlet and allow collected material removal without spillage. Include a high-flow bypass in the insert.



**FIBER ROLL
DROP INLET PROTECTION (TYPE A)**



**GRAVEL BAG BERM
DROP INLET PROTECTION (TYPE B)**



**PREFABRICATED FILTER INSERT
DROP INLET PROTECTION (TYPE C)**
See Note 6

NO SCALE

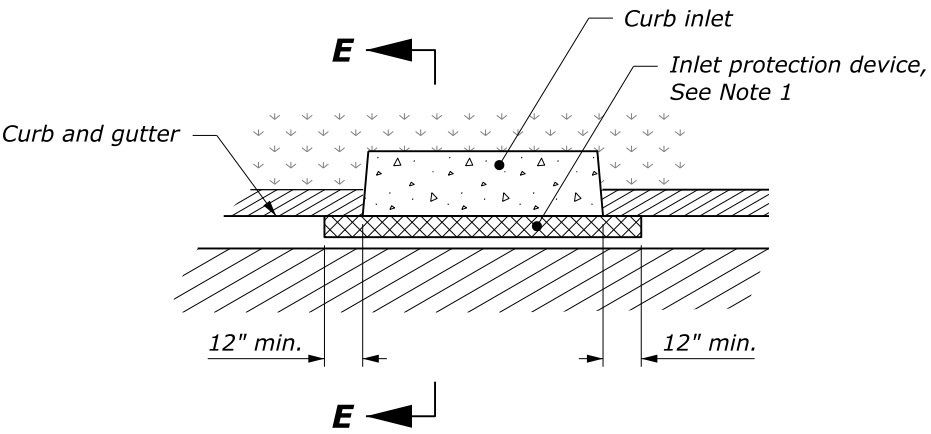
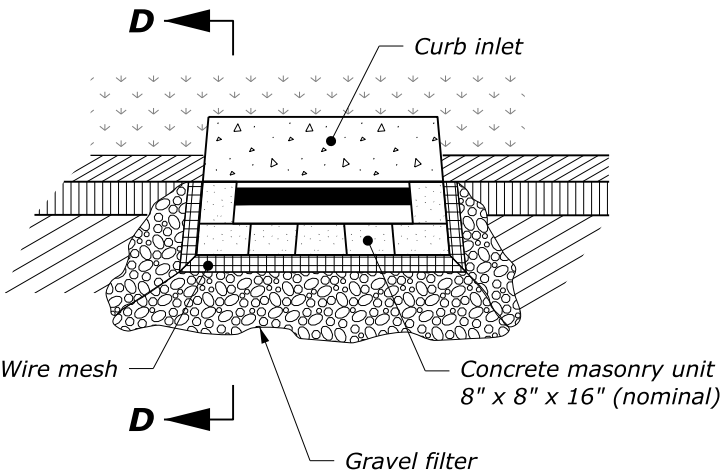
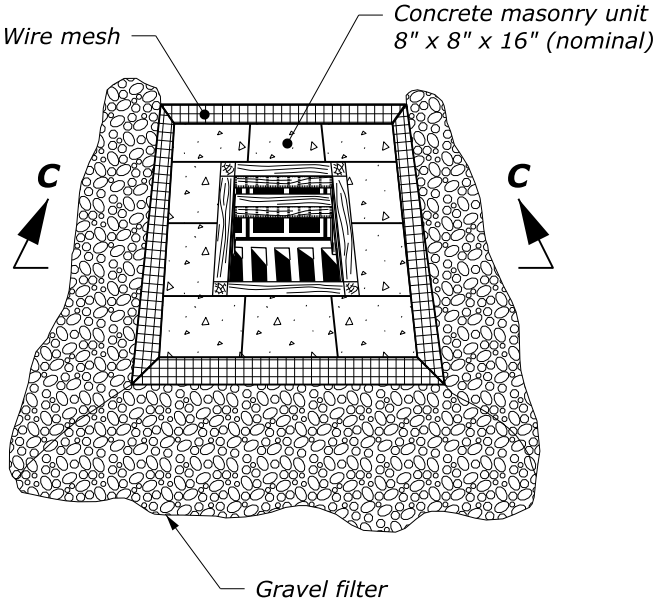
U.S. DEPARTMENT OF TRANSPORTATION, FHWA
OFFICE OF FEDERAL LANDS HIGHWAY**TEMPORARY INLET
PROTECTION**

Sheet 1 of 2

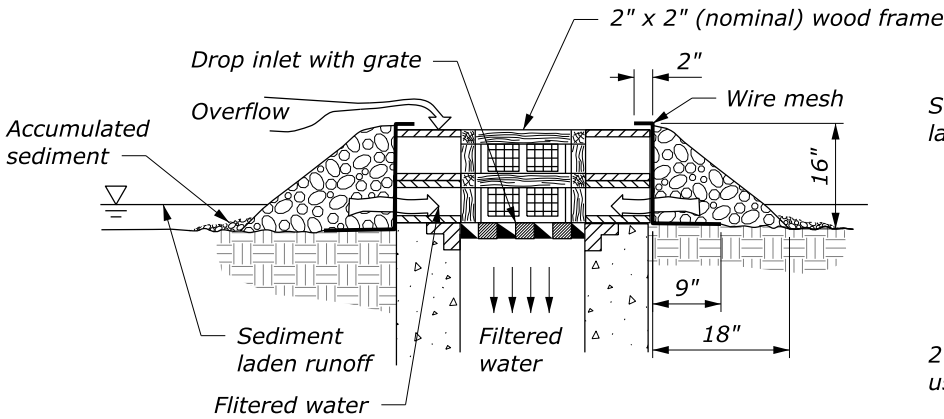
WFL STANDARD
W157-2SPECIFICATION
FP-24, FP-14APPROVED FOR USE
7/2016

NOTE:

- 1. Inlet protection device (type E) may consist of continuous filter tubing filled with gravel or other prefabricated filter material. Install device according to manufacturer's recommendations.
- 2. Vary dimensions to fit field conditions.

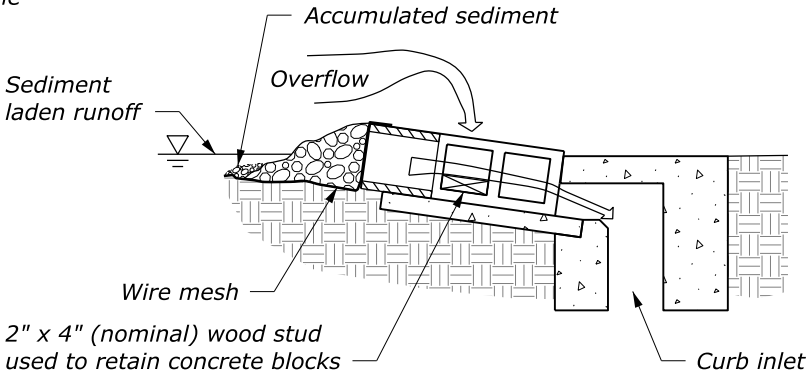


PLAN



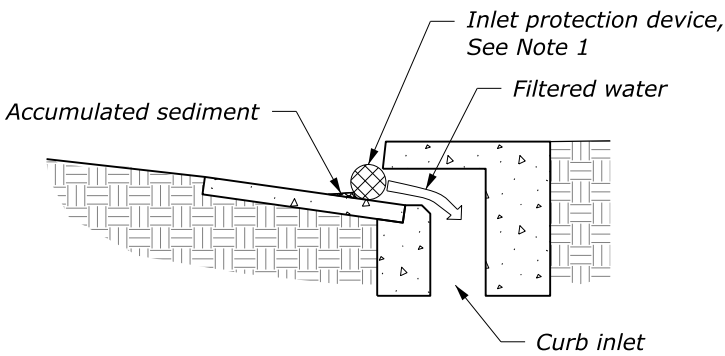
SECTION C-C

**BLOCK AND GRAVEL
DROP INLET PROTECTION (TYPE D1)**



SECTION D-D

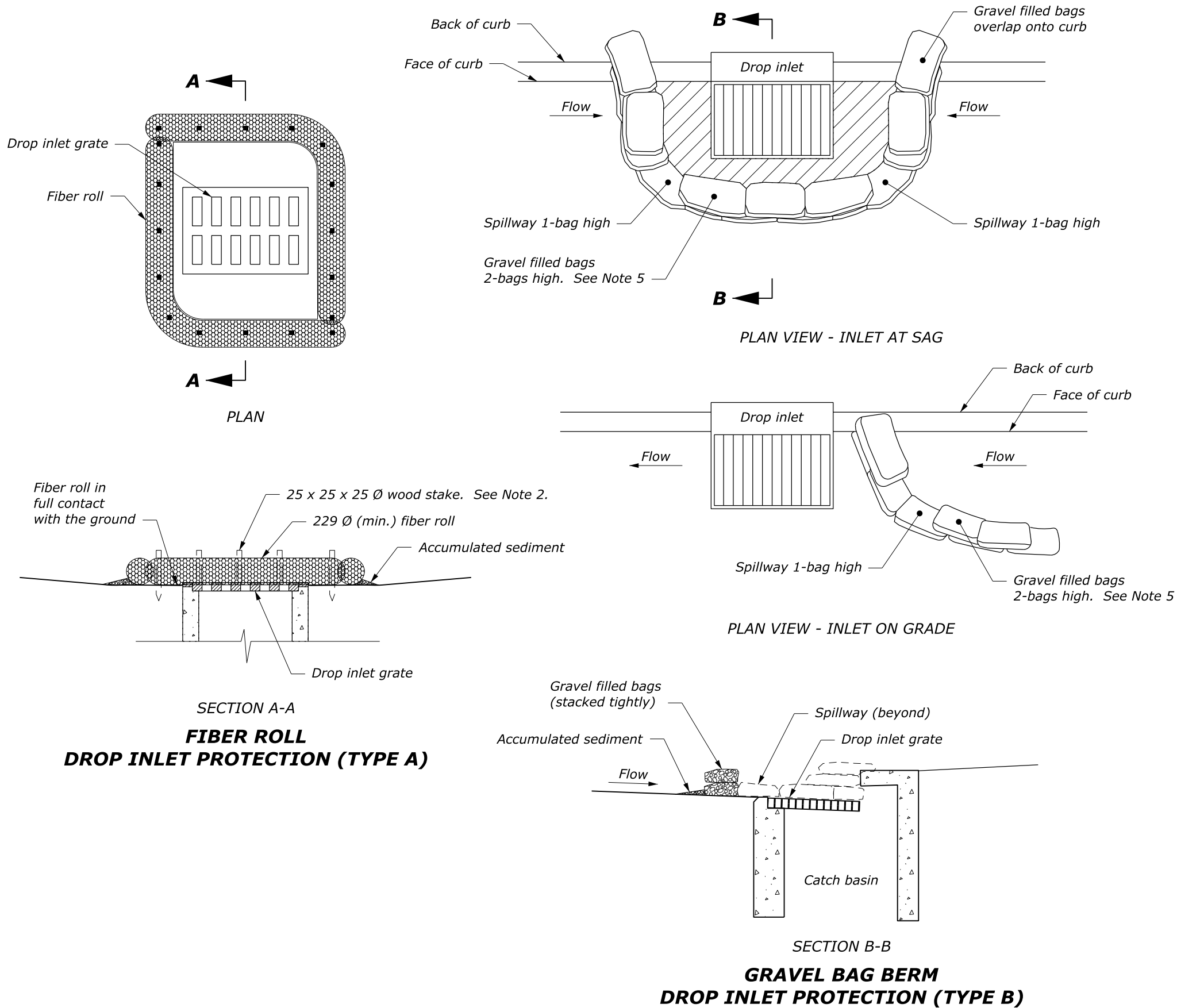
**BLOCK AND GRAVEL
CURB INLET PROTECTION (TYPE D2)**



SECTION E-E

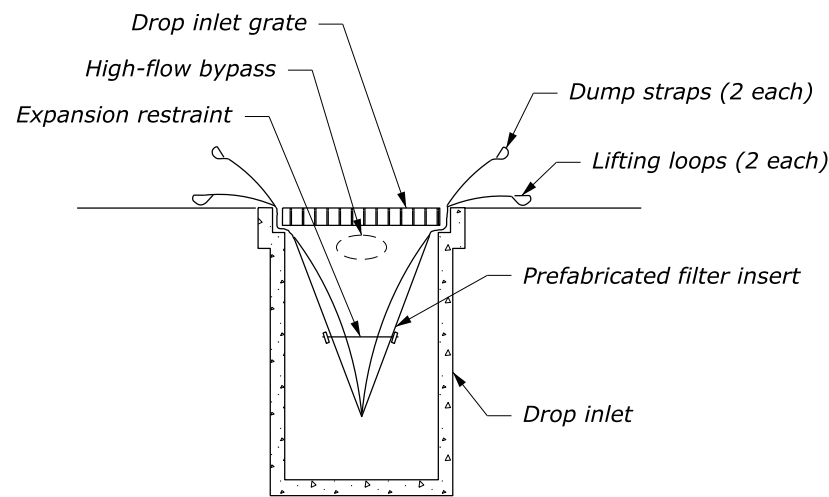
**INLET PROTECTION DEVICE
CURB INLET PROTECTION (TYPE E)**

NO SCALE



NOTE:

1. Select the inlet protection device to fit field conditions as approved.
2. Install fiber rolls with stakes spaced no more than 610 mm on center. Drive stakes 305 mm (min.) in undisturbed soil.
3. Approximate finished dimension of gravel bags is 305 mm x 457 mm.
4. Maximum top of gravel bag spillway elevation = Top of curve minus 25 mm.
5. Pack gravel filled bags tightly together end to end to ensure no sediment flows between or underneath the bags. Where tight fit is unachievable, install geotextile filter, class 2, type C along the upstream face of the bags. Place fabric over the top of the bags to the spillway elevation. Anchor the fabric by placing the next layer of bags on top of it. Extend the geotextile fabric a minimum of 457 mm upstream of the bags. Cover geotextile fabric to the top of the fabric with clean, silt-free coarse aggregate between 51 and 76 mm in diameter.
6. Size the prefabricated filter insert (Type C) to fit the drop inlet and allow collected material removal without spillage. Include a high-flow bypass in the insert.



**PREFABRICATED FILTER INSERT
DROP INLET PROTECTION (TYPE C)**
See Note 6

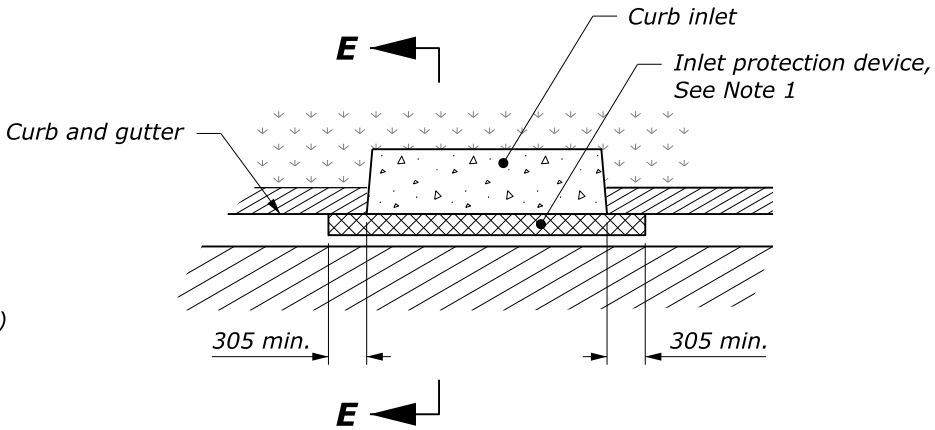
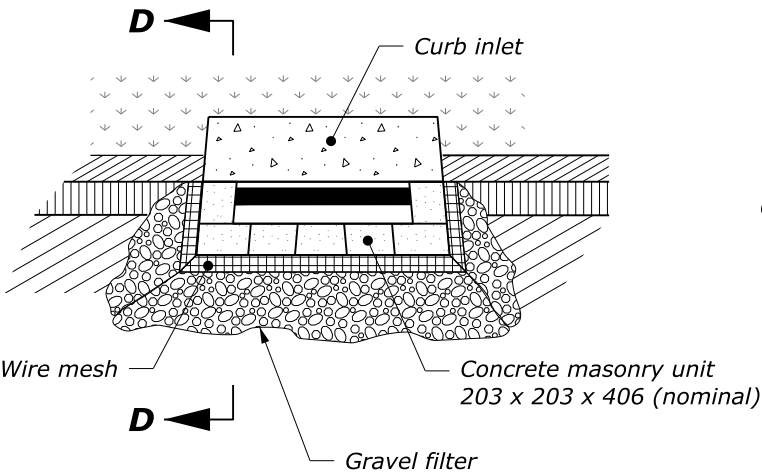
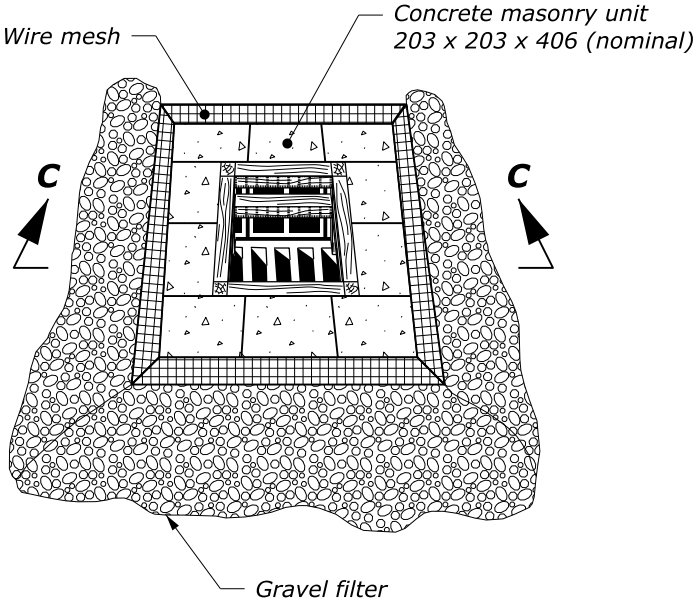
This drawing contains **Metric** units of measure.
Dimensions without units are millimeters.

NO SCALE

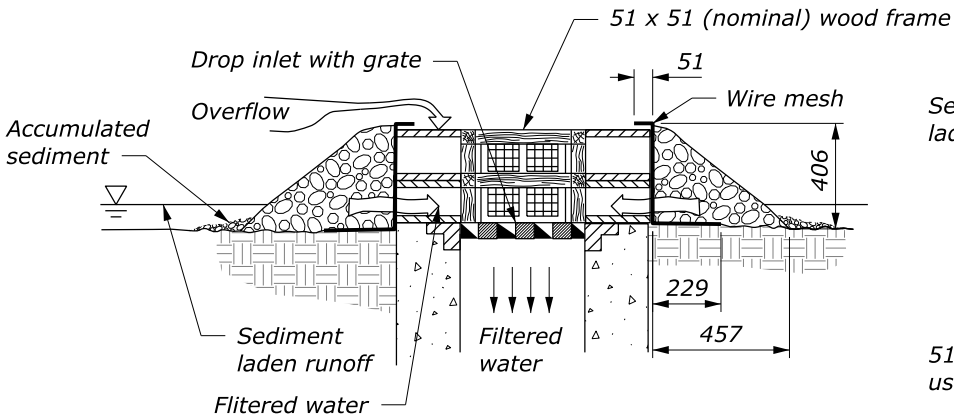
U.S. DEPARTMENT OF TRANSPORTATION, FHWA OFFICE OF FEDERAL LANDS HIGHWAY	WFL STANDARD WM157-2
TEMPORARY INLET PROTECTION Sheet 1 of 2	SPECIFICATION FP-24, FP-14
	APPROVED FOR USE 7/2016

NOTE:

- 1. Inlet protection device (type E) may consist of continuous filter tubing filled with gravel or other prefabricated filter material. Install device according to manufacturer's recommendations.
- 2. Vary dimensions to fit field conditions.

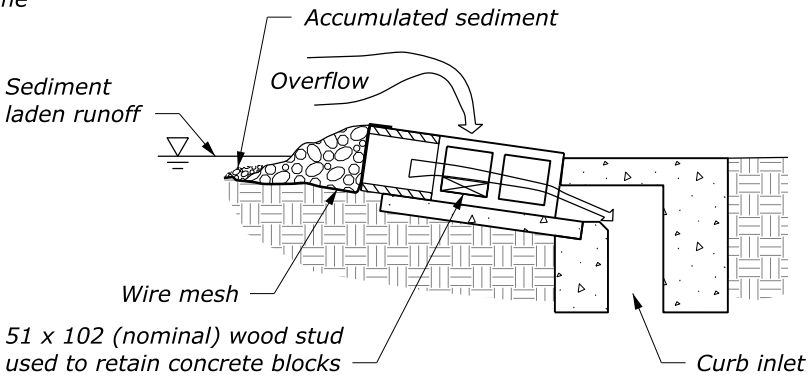


PLAN



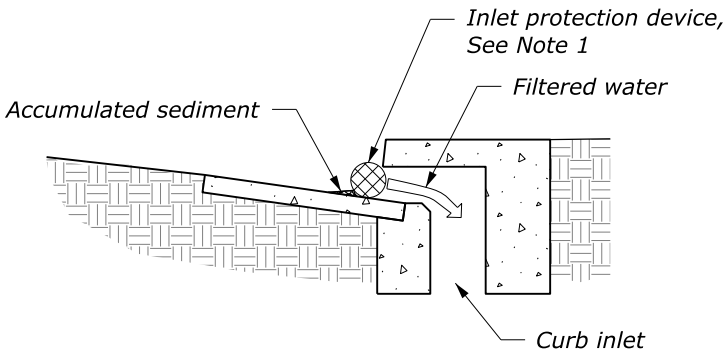
SECTION C-C

**BLOCK AND GRAVEL
DROP INLET PROTECTION (TYPE D1)**



SECTION D-D

**BLOCK AND GRAVEL
CURB INLET PROTECTION (TYPE D2)**



SECTION E-E

**INLET PROTECTION DEVICE
CURB INLET PROTECTION (TYPE E)**

This drawing contains **Metric** units of measure.
Dimensions without units are millimeters.

NO SCALE

U.S. DEPARTMENT OF TRANSPORTATION, FHWA OFFICE OF FEDERAL LANDS HIGHWAY	WFL STANDARD WM157-2
TEMPORARY INLET PROTECTION Sheet 2 of 2	SPECIFICATION FP-24, FP-14
	APPROVED FOR USE 7/2016