

LENGTH AND SPACING TABLE

APPROACH SPEED* MPH	MINIMUM TAPER LENGTH** FEET	BUFFER SPACE LENGTH FEET	CHANNELIZING DEVICE SPACING IN FEET		
			TAPER AREA	BUFFER SPACE	WORK SPACE
20	Shoulder taper formula: $L = \frac{WS^2}{180}$ for $S \leq 40$ mph	115	20	40	40
25		155	25	50	50
30	$L = \frac{WS}{3}$ for $S \geq 45$ mph	200	30	60	60
35		250	35	70	70
40		305	40	80	80
45	Where: L = Minimum length of taper	360	45	90	90
50	W = Width of offset in feet	425	50	100	100
55	S = Numerical value of posted speed limit or 85 percentile speed prior to work in miles per hour	495	55	110	110
60		570	60	120	120
65		645	65	130	130
70		730	70	140	140

* Approach speed based on the regulatory posted speed, not the advisory speed.

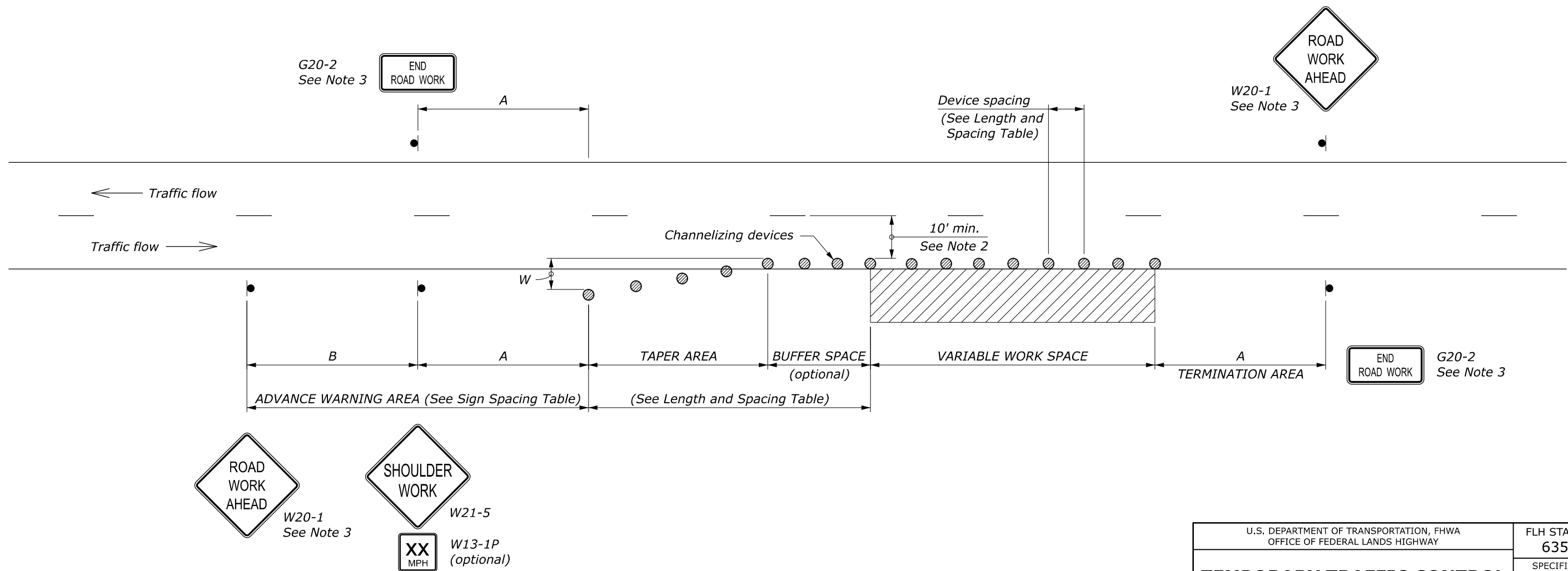
** Lengthen taper as needed to provide minimum of three channelizing devices in taper at required spacing.

SIGN SPACING TABLE

ROAD TYPE	DISTANCE BETWEEN SIGNS IN FEET		
	A	B	C
Urban and Rural 30 mph and less	100	100	100
Urban and Rural 35 mph to 50 mph	350	350	350
Rural greater than 50 mph	500	500	500
Expressway / Freeway	1000	1500	2640

NOTE:

1. Final location and spacing of devices may be changed to fit field conditions as approved.
2. For project specific minimum width, refer to Special Contract Requirements, Section 156.
3. If shoulder closure is completely within the project limits, eliminate the ROAD WORK AHEAD (W20-1) and END ROAD WORK (G20-2) signs.
4. Do not allow equipment, materials, or vehicles to be parked or stored in the buffer space.



U.S. DEPARTMENT OF TRANSPORTATION, FHWA
OFFICE OF FEDERAL LANDS HIGHWAY

**TEMPORARY TRAFFIC CONTROL
SHOULDER CLOSURE LAYOUT**

FLH STANDARD
635-10

SPECIFICATION
FP-24, FP-14

APPROVED FOR USE
2/2024

NO SCALE

LENGTH AND SPACING TABLE

APPROACH SPEED*		MINIMUM TAPER LENGTH** m	BUFFER SPACE LENGTH m	CHANNELIZING DEVICE SPACING IN METERS		
mph	km/h			TAPER AREA	BUFFER SPACE	WORK SPACE
20	30	Shoulder taper formula: $L = \frac{WS^2}{465}$ for $S \leq 70$ km/h	35	6	12	12
25	40		45	8	15	15
30	50		60	9	18	18
35	55	$L = \frac{WS}{4.8}$ for $S \geq 70$ km/h	75	11	21	21
40	65		95	12	24	24
45	70		110	14	27	27
50	80	Where: $L =$ Minimum length of taper	130	15	30	30
55	90	$W =$ Width of offset in meters	150	17	34	34
60	95	$S =$ Metric equivalent of posted speed limit or 85 percentile speed prior to work in kilometers per hour	175	18	37	37
65	105		195	20	40	40
70	115		225	21	43	43

* Approach speed based on the regulatory posted speed, not the advisory speed.

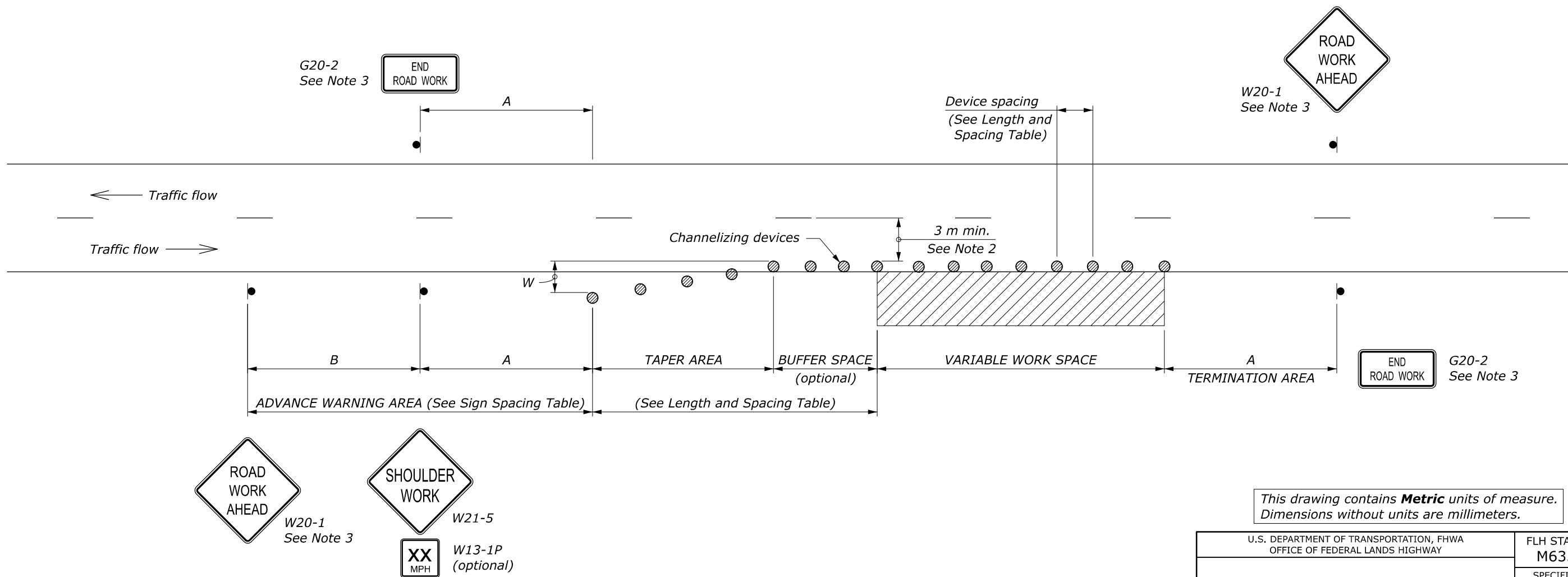
** Lengthen taper as needed to provide minimum of three channelizing devices in taper at required spacing.

SIGN SPACING TABLE

ROAD TYPE	DISTANCE BETWEEN SIGNS IN METERS		
	A	B	C
Urban and Rural ≤ 50 km/h [≤ 30 mph]	30	30	30
Urban and Rural 60-80 km/h [35-50 mph]	100	100	100
Rural greater than 80 km/h [50 mph]	150	150	150
Expressway / Freeway	300	450	800

NOTE:

1. Final location and spacing of devices may be changed to fit field conditions as approved.
2. For project specific minimum width, refer to Special Contract Requirements, Section 156.
3. If shoulder closure is completely within the project limits, eliminate the ROAD WORK AHEAD (W20-1) and END ROAD WORK (G20-2) signs.
4. Do not allow equipment, materials, or vehicles to be parked or stored in the buffer space.



This drawing contains **Metric** units of measure. Dimensions without units are millimeters.

U.S. DEPARTMENT OF TRANSPORTATION, FHWA OFFICE OF FEDERAL LANDS HIGHWAY	FLH STANDARD M635-10
TEMPORARY TRAFFIC CONTROL SHOULDER CLOSURE LAYOUT	SPECIFICATION FP-24, FP-14
	APPROVED FOR USE 2/2024

NO SCALE