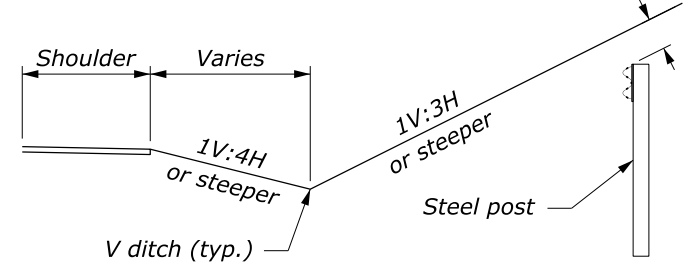
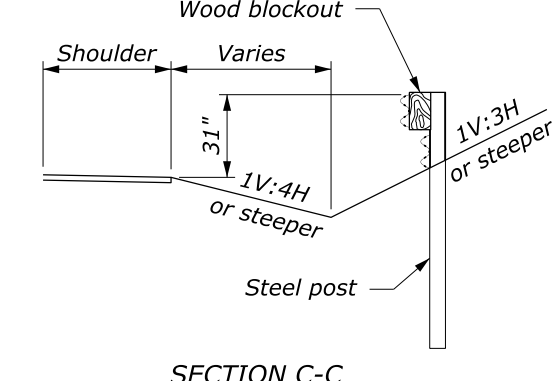
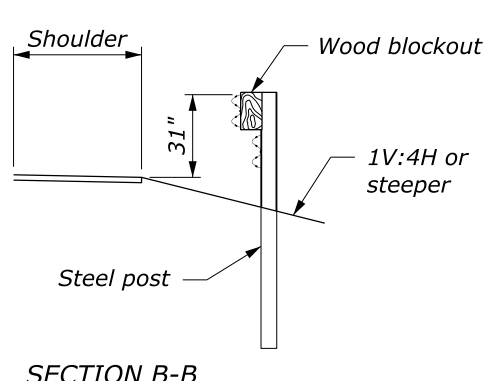
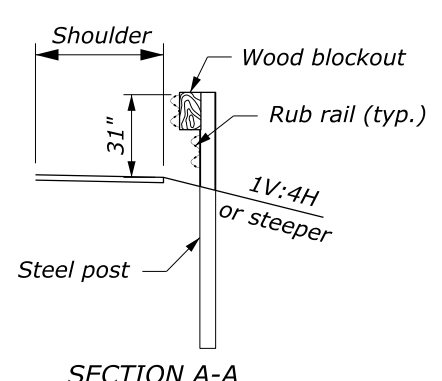
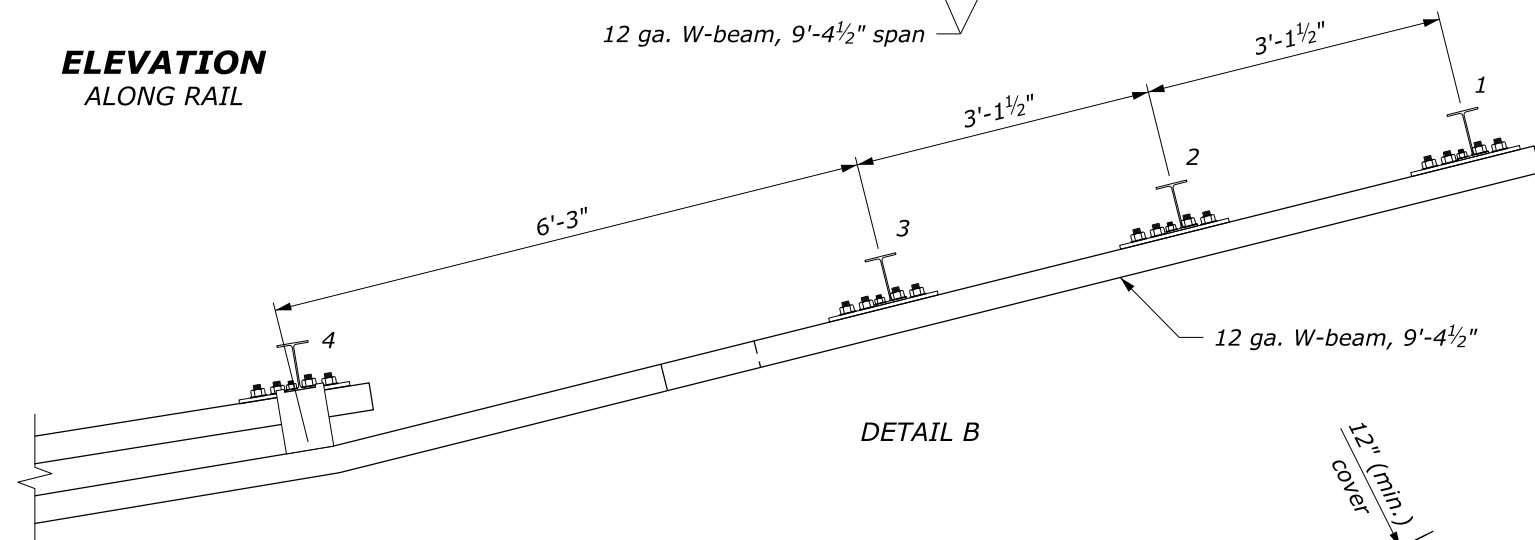
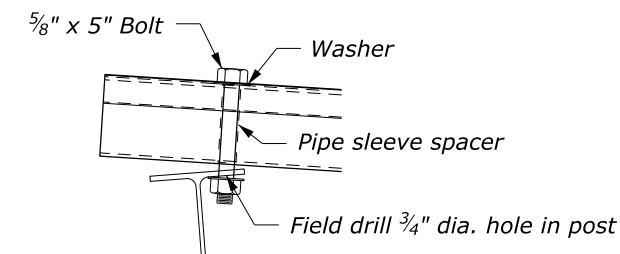
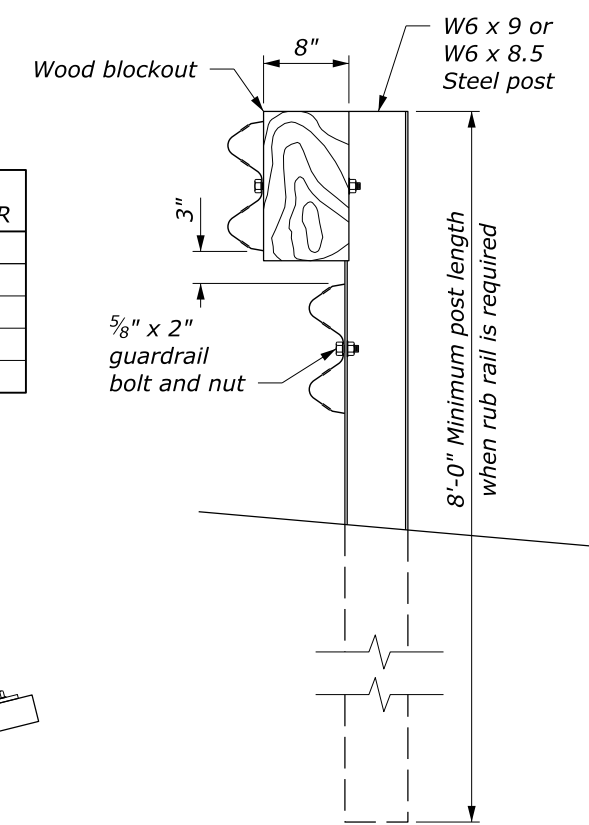
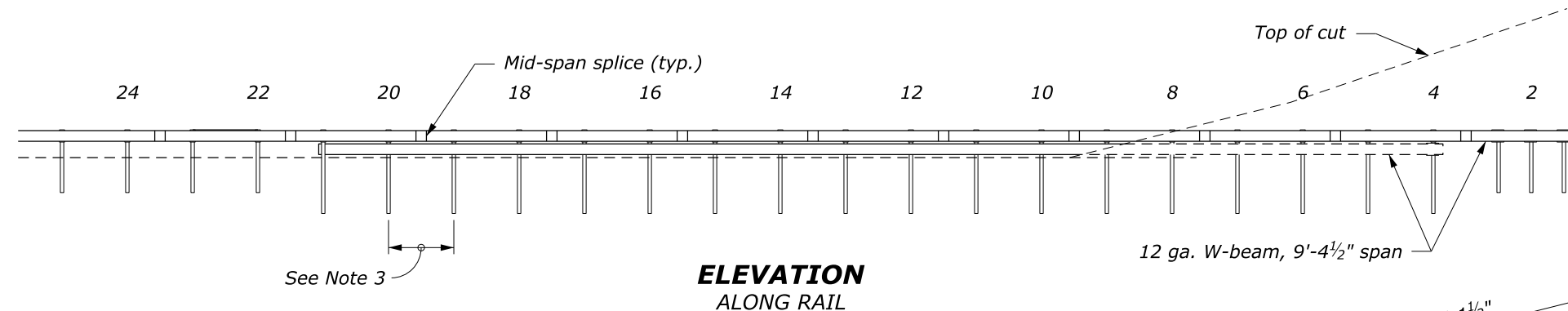


**NOTE:**

1. Typical post spacing is 6'-3" unless otherwise noted.
2. See Standard 617-31 (wood posts) and 617-32 (steel posts) for other details.

**PLAN**

POST OFFSETS FROM EDGE OF SHOULDER	
POST	DISTANCE
1	13'-11 <sup>3</sup> / <sub>4</sub> "
4	10'-11"
6	8'-10 <sup>1</sup> / <sub>4</sub> "
10	5'-9"



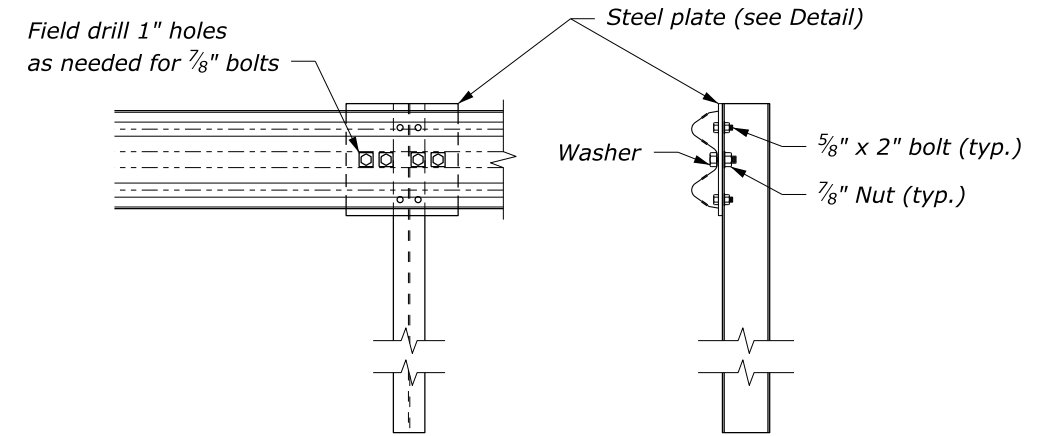
NO SCALE

U.S. DEPARTMENT OF TRANSPORTATION, FHWA OFFICE OF FEDERAL LANDS HIGHWAY	FLH STANDARD 617-18
<b>MGS W-BEAM GUARDRAIL BACK SLOPE ANCHOR TERMINAL TYPE MGS-BAT</b>	SPECIFICATION FP-14
Sheet 1 of 2	APPROVED FOR USE 2/2024

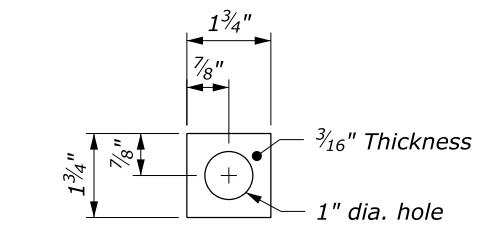
c:\pwwork\0419223\Std617-18fp14.dgn [Std 617-18a] 11 July 2024 12:30 PM

**NOTE:**

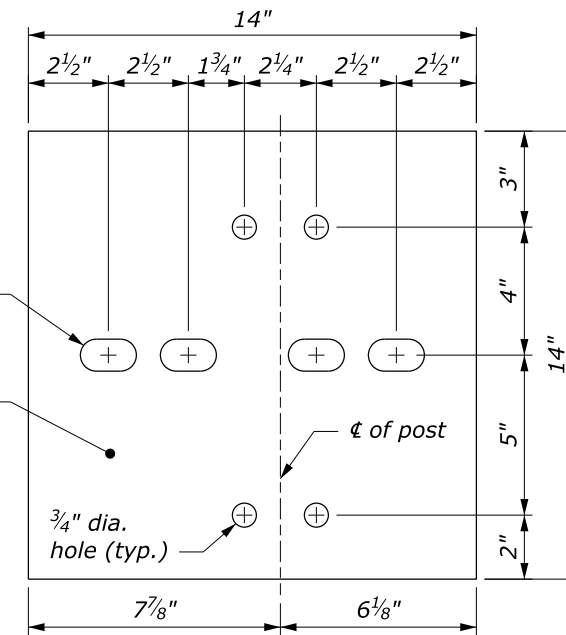
1. See Sheet 1 of 2 for terminal layout.
2. Use zinc rich paint to coat field drilled holes.
3. Anchor plate and hardware are typical on top rail of Posts 1 -3 and rub rail at Post 4.



**SPECIAL RAIL TO POST CONNECTION AT POSTS 1, 2, AND 3**



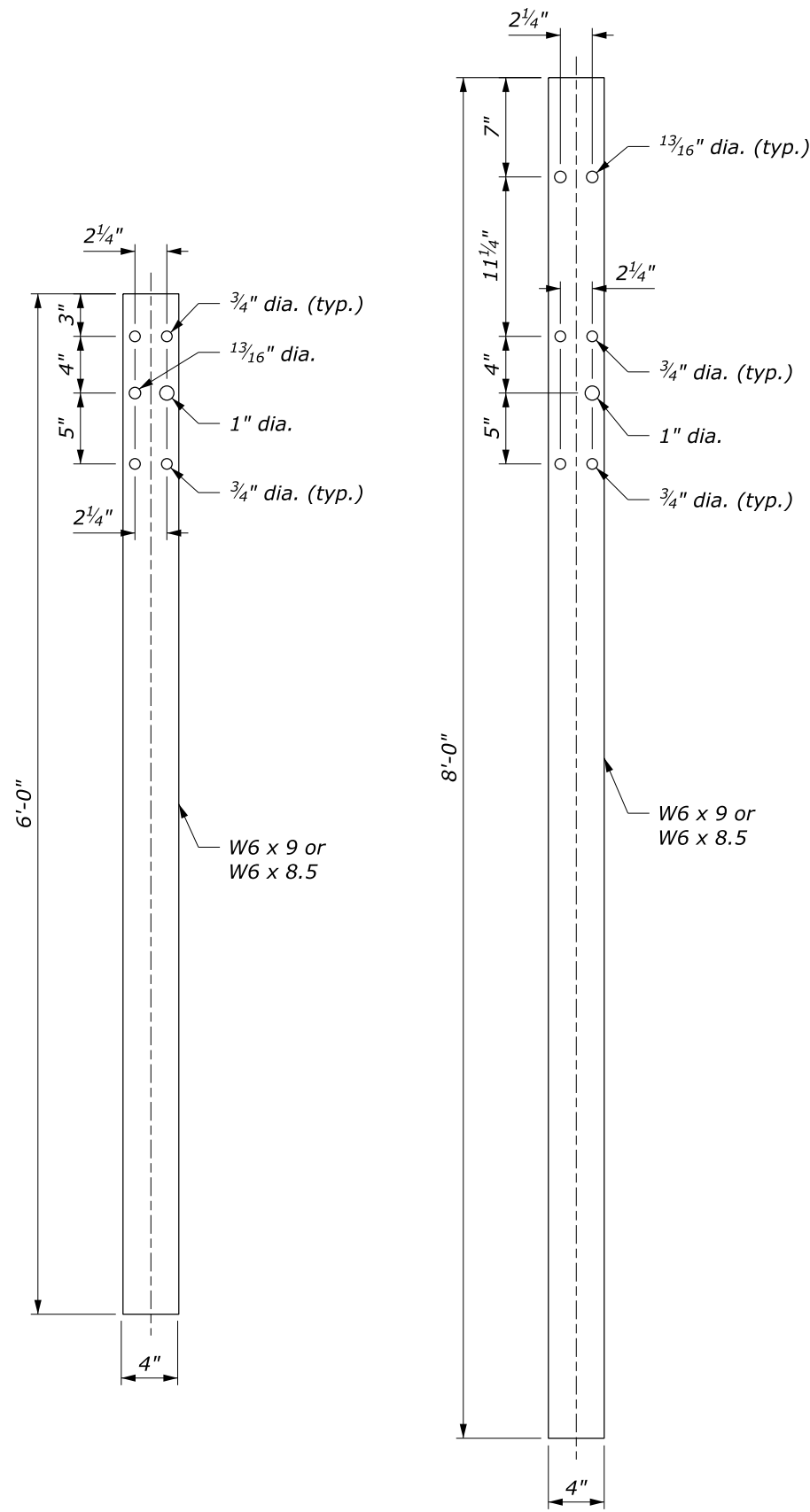
GALVANIZED SQUARE WASHER



GALVANIZED STEEL PLATE

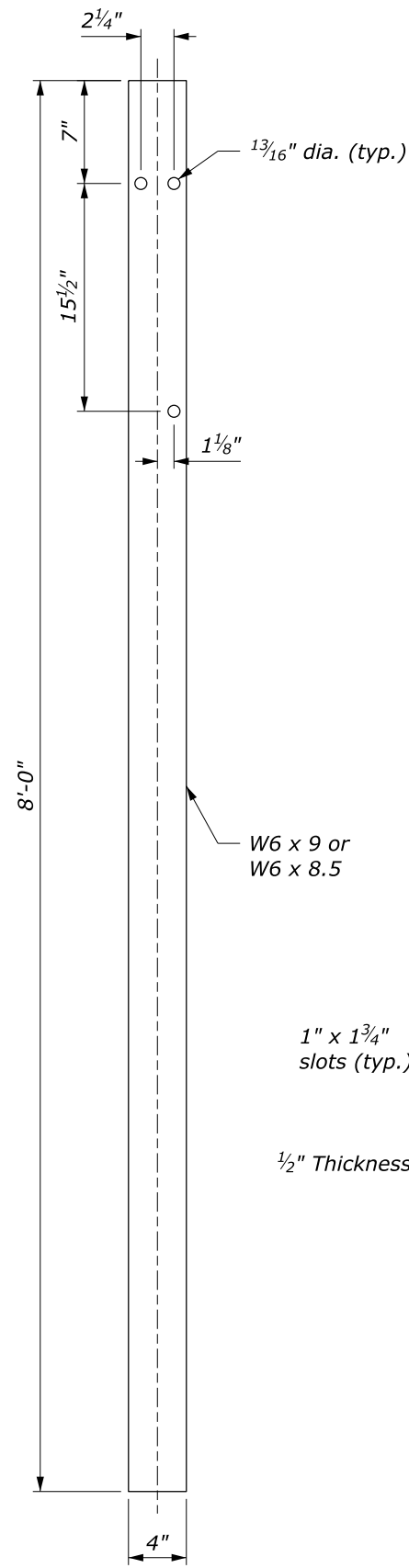
**STEEL PLATE AND WASHER**  
See Note 3

NO SCALE



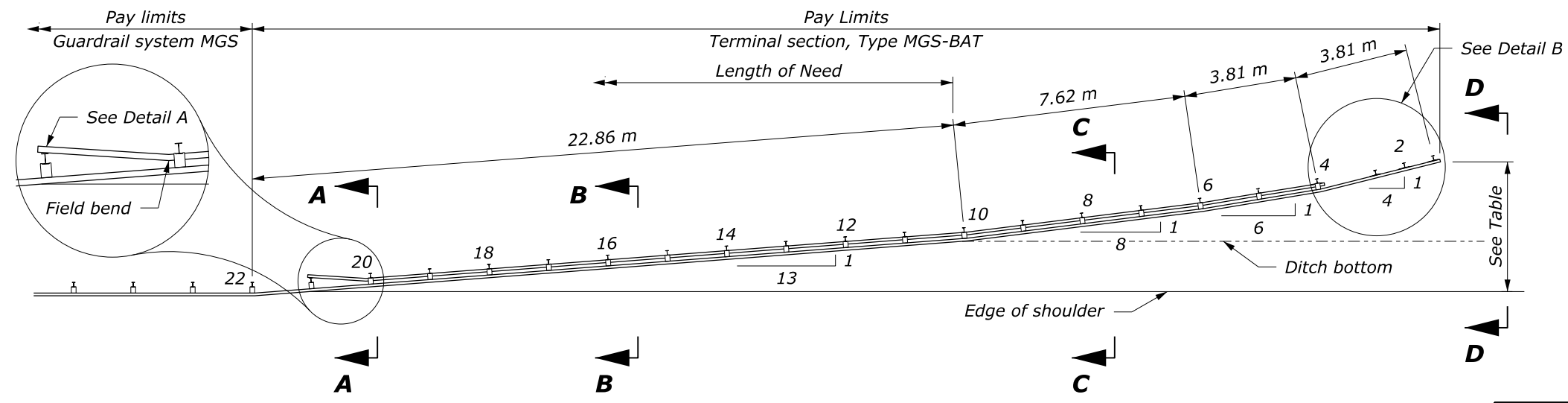
**POSTS 1-3**

**POST 4**



**POSTS 5-21**

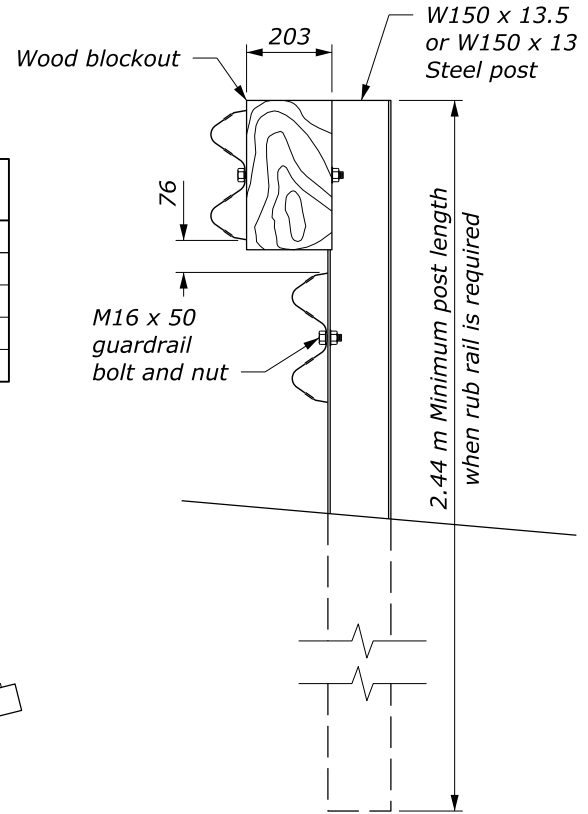
U.S. DEPARTMENT OF TRANSPORTATION, FHWA OFFICE OF FEDERAL LANDS HIGHWAY	FLH STANDARD 617-18
<b>MGS W-BEAM GUARDRAIL BACK SLOPE ANCHOR TERMINAL TYPE MGS-BAT</b>	SPECIFICATION FP-14
Sheet 2 of 2	APPROVED FOR USE 2/2024



- NOTE:**
1. Typical post spacing is 1.905 m unless otherwise noted.
  2. See Standard M617-31 (wood posts) and M617-32 (steel posts) for other details.

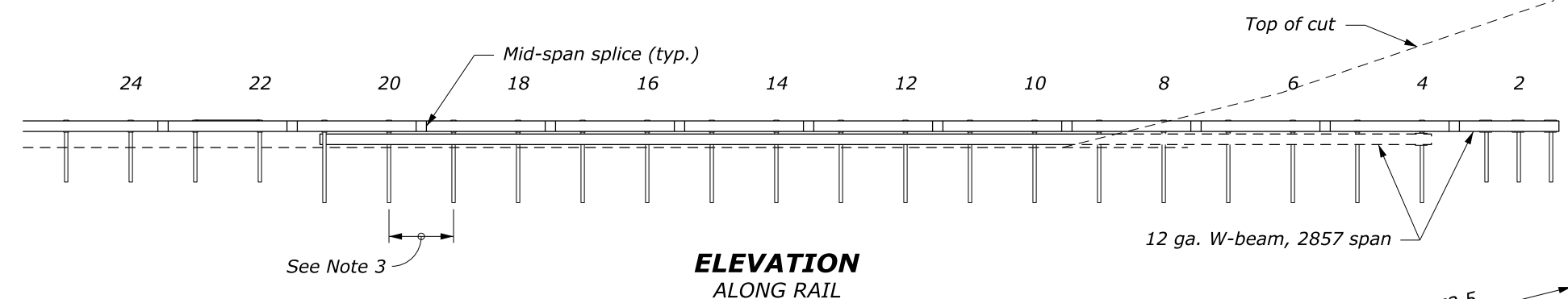
**PLAN**

POST	DISTANCE
1	4.26 m
4	3.33 m
6	2.70 m
10	1.56 m

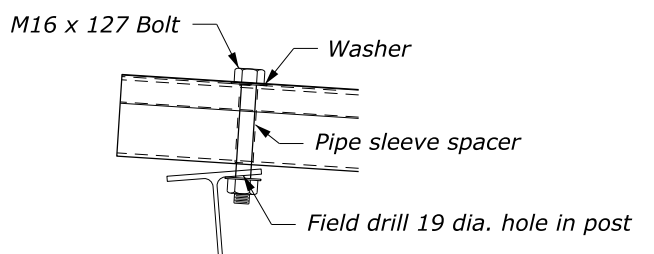


**ELEVATION**

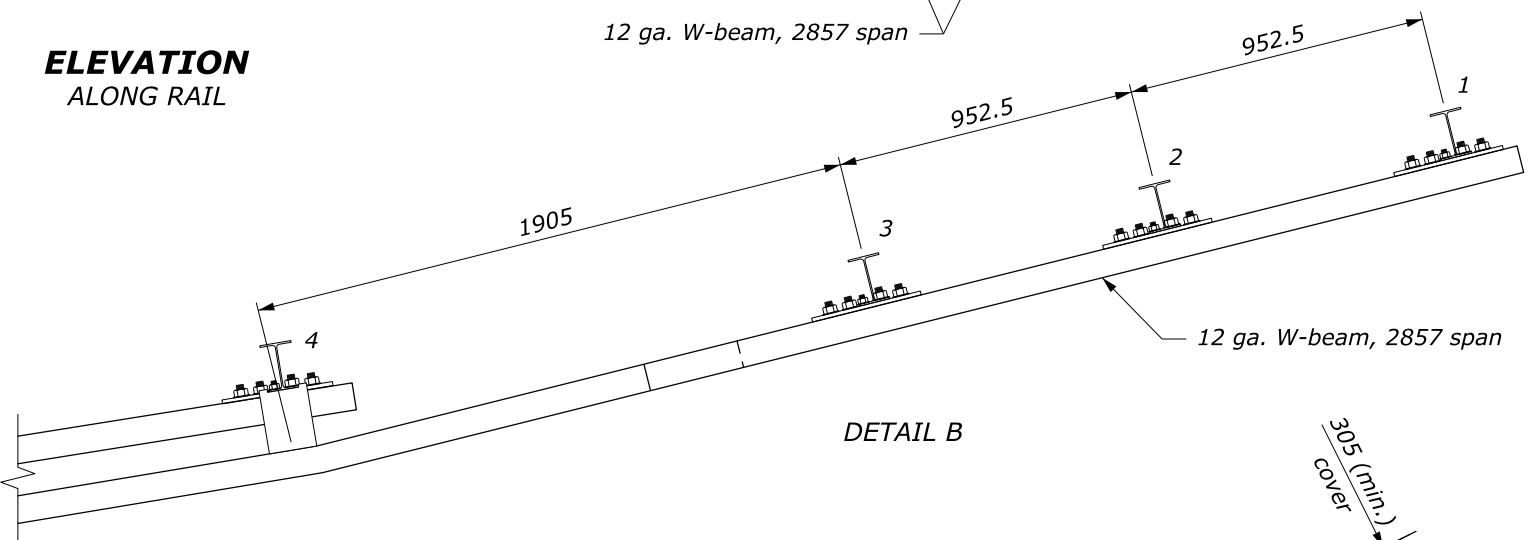
**STEEL POST AND BLOCK DETAIL**



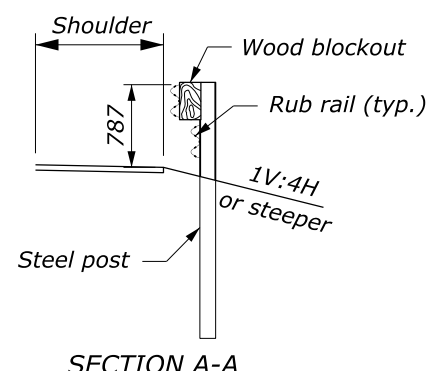
**ELEVATION ALONG RAIL**



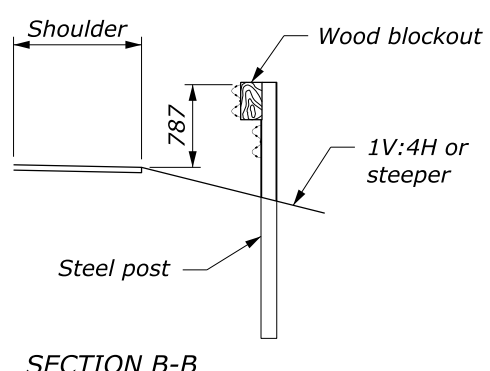
**DETAIL A**



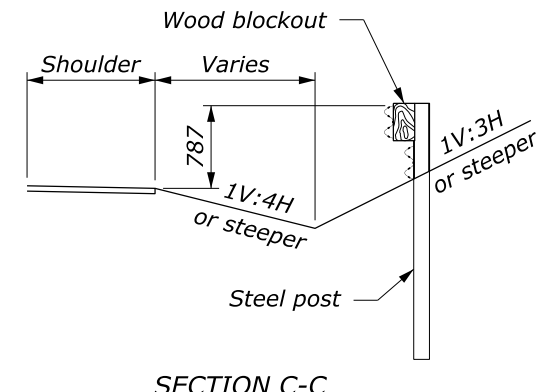
**DETAIL B**



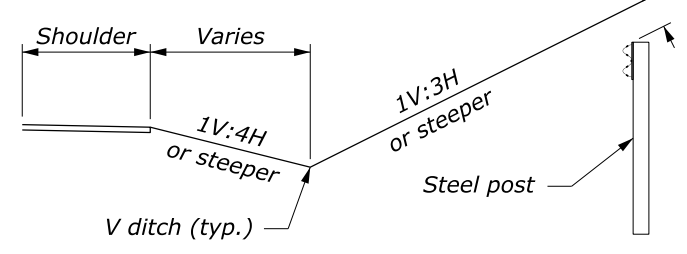
**SECTION A-A**



**SECTION B-B**



**SECTION C-C**



**SECTION D-D**

NO SCALE

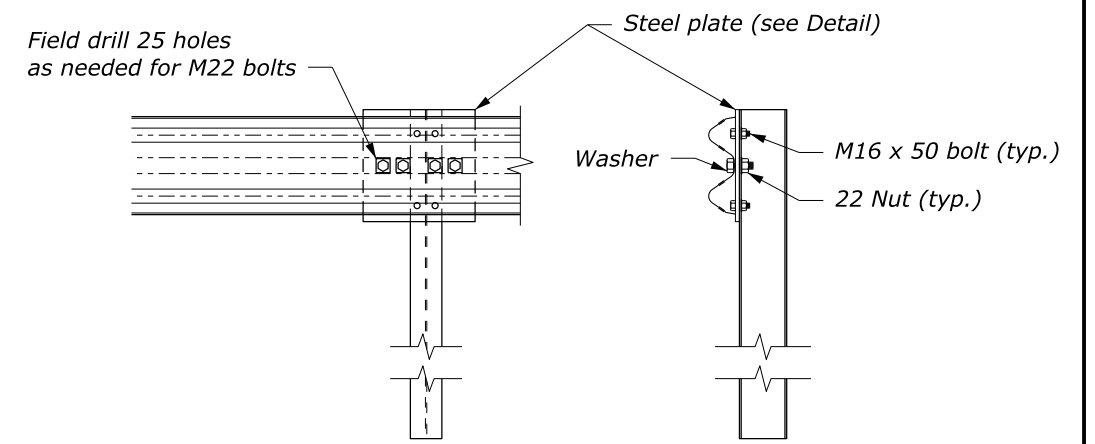
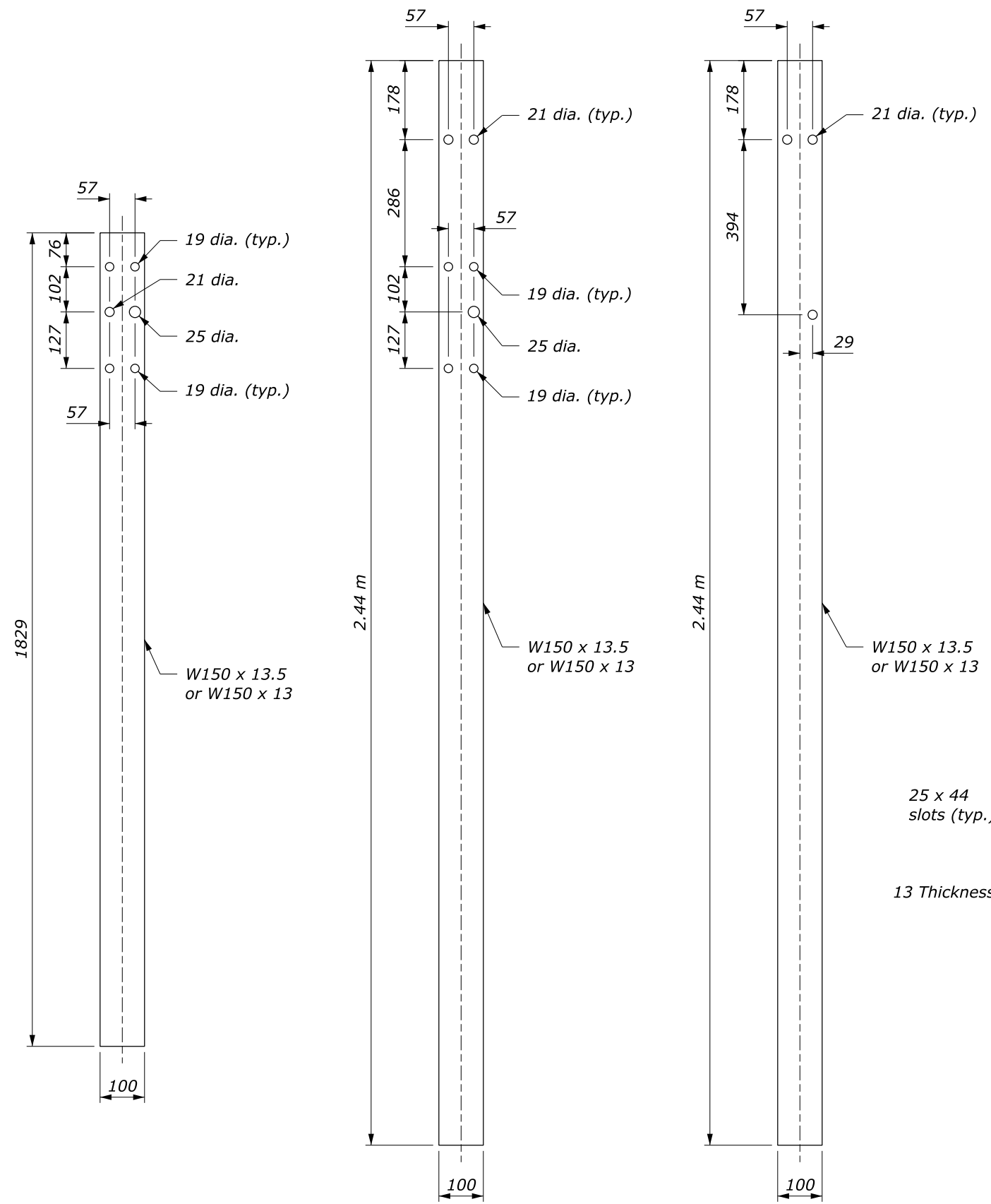
This drawing contains **Metric** units of measure. Dimensions without units are millimeters.

U.S. DEPARTMENT OF TRANSPORTATION, FHWA OFFICE OF FEDERAL LANDS HIGHWAY	FLH STANDARD M617-18
<b>MGS W-BEAM GUARDRAIL BACK SLOPE ANCHOR TERMINAL TYPE MGS-BAT</b>	SPECIFICATION FP-14
Sheet 1 of 2	APPROVED FOR USE 2/2024

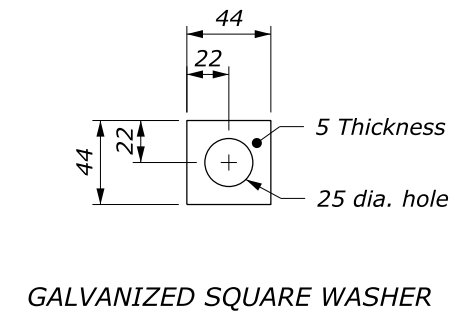
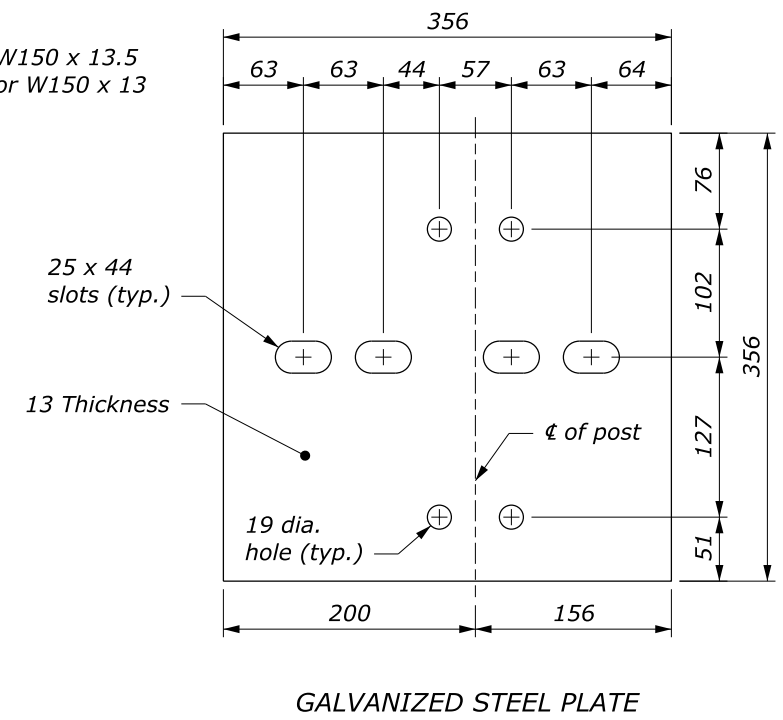
11 July 2024 11:55 AM c:\pwwork\0419223\Std617-18fp14.dwg [Std M617-18a]

**NOTE:**

1. See Sheet 1 of 2 for terminal layout.
2. Use zinc rich paint to coat field drilled holes.
3. Anchor plate and hardware are typical on top rail of Posts 1 -3 and rub rail at Post 4.



**SPECIAL RAIL TO POST CONNECTION AT POSTS 1, 2, AND 3**



**STEEL PLATE AND WASHER**  
See Note 3

This drawing contains **Metric** units of measure. Dimensions without units are millimeters.

U.S. DEPARTMENT OF TRANSPORTATION, FHWA OFFICE OF FEDERAL LANDS HIGHWAY	FLH STANDARD M617-18
<b>MGS W-BEAM GUARDRAIL BACK SLOPE ANCHOR TERMINAL TYPE MGS-BAT</b>	SPECIFICATION FP-14
Sheet 2 of 2	APPROVED FOR USE 2/2024

NO SCALE

c:\pwwork\0419223\Std617-18fp14.dgn [Std M617-18b] 1.1 July 2024 12:27 PM