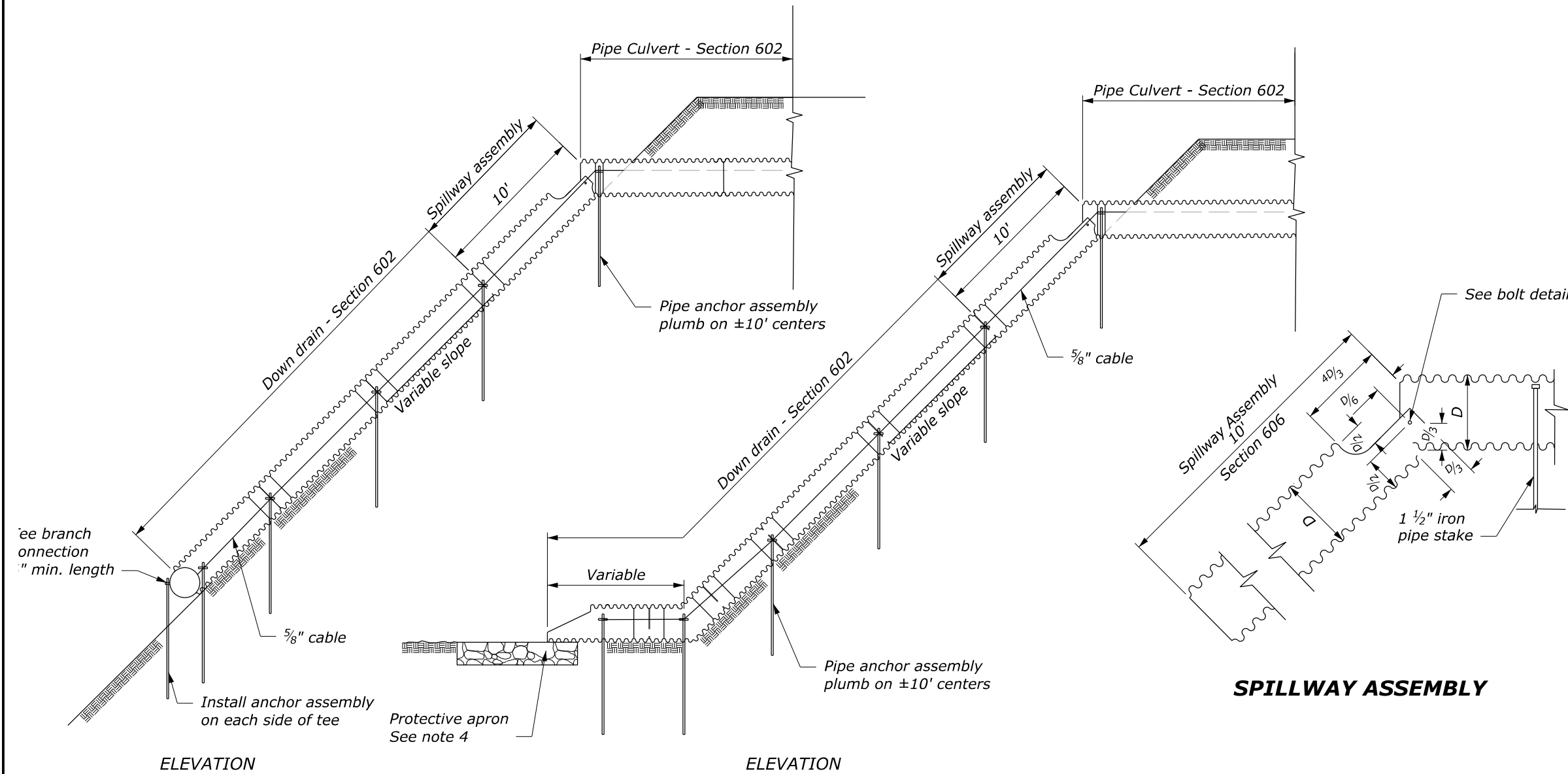


**NOTE:**

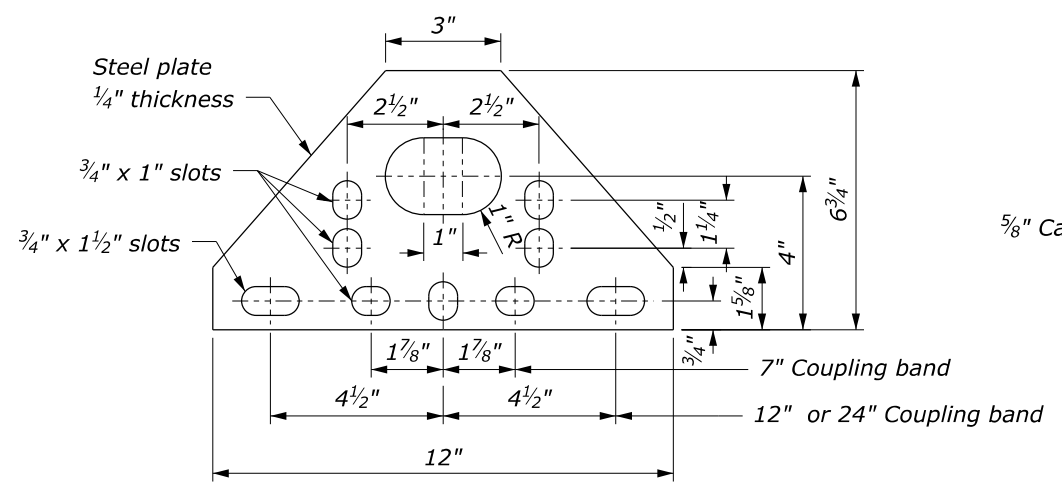
1. Fabricate spillway assembly from annular corrugated pipe, or from helically corrugated pipe with factory annular or reformed ends. Use 16 gauge galvanized steel or 16 gauge aluminum.
2. Make all banded connections watertight by placing 1/4" bead of approved caulking under each half of the band before tightening.
3. Payment for tee branch connection under Section 602 is included in the linear foot measurement for culvert pipe for the applicable sizes. Measure tee branch connections along the top of the tee.
4. Furnish riprap conforming to Section 251. See detail C251-50.
5. Galvanize all parts of the anchor assembly after fabrication.



**SPILLWAY ASSEMBLY WITH DOWN DRAIN  
OUTLET ON NON-ERODIBLE MATERIAL**

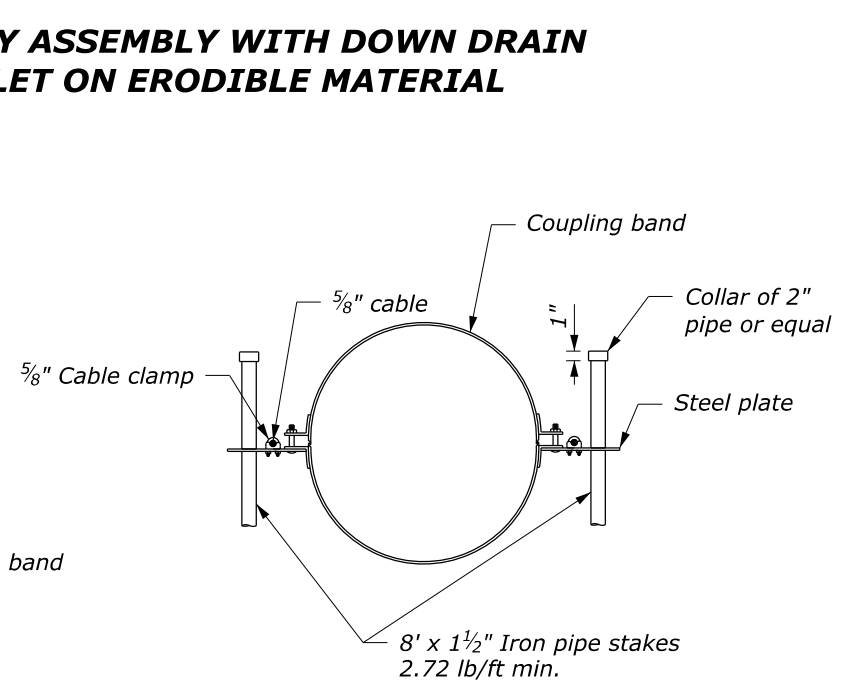
**SPILLWAY ASSEMBLY WITH DOWN DRAIN  
OUTLET ON ERODIBLE MATERIAL**

**SPILLWAY ASSEMBLY**

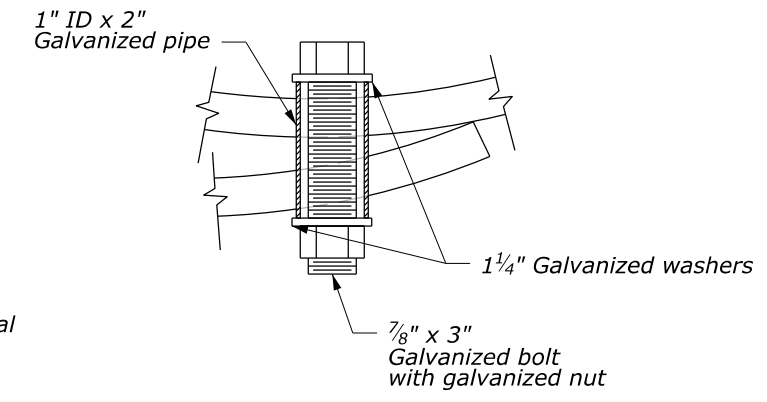


Measure length of coupling band parallel to the centerline of the pipe.

**STEEL PLATE**



**ANCHOR ASSEMBLY**



**BOLT DETAIL**

NO SCALE

U.S. DEPARTMENT OF TRANSPORTATION, FHWA OFFICE OF FEDERAL LANDS HIGHWAY	CFLHD DETAIL C606-50
<b>CMP SPILLWAY ASSEMBLY WITH DOWN DRAIN</b>	SPECIFICATION FP-24, FP-14 APPROVED FOR USE 06/2024

K:\CADD\_Coordinator\ORD Drawings\Details\C606-50.dgn [Det C606-50] 18 June 2024 11:27 AM