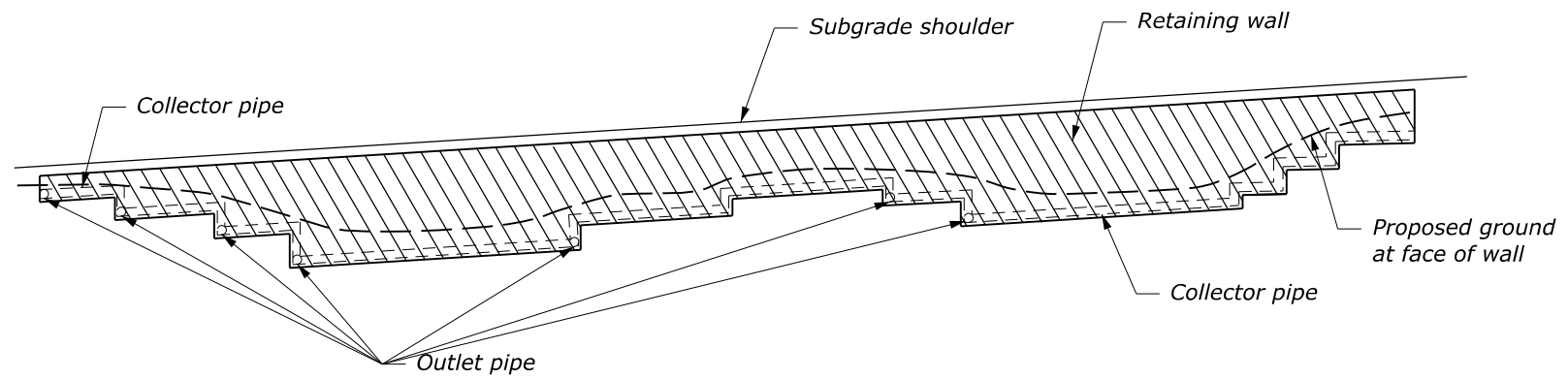


TYPICAL SECTION

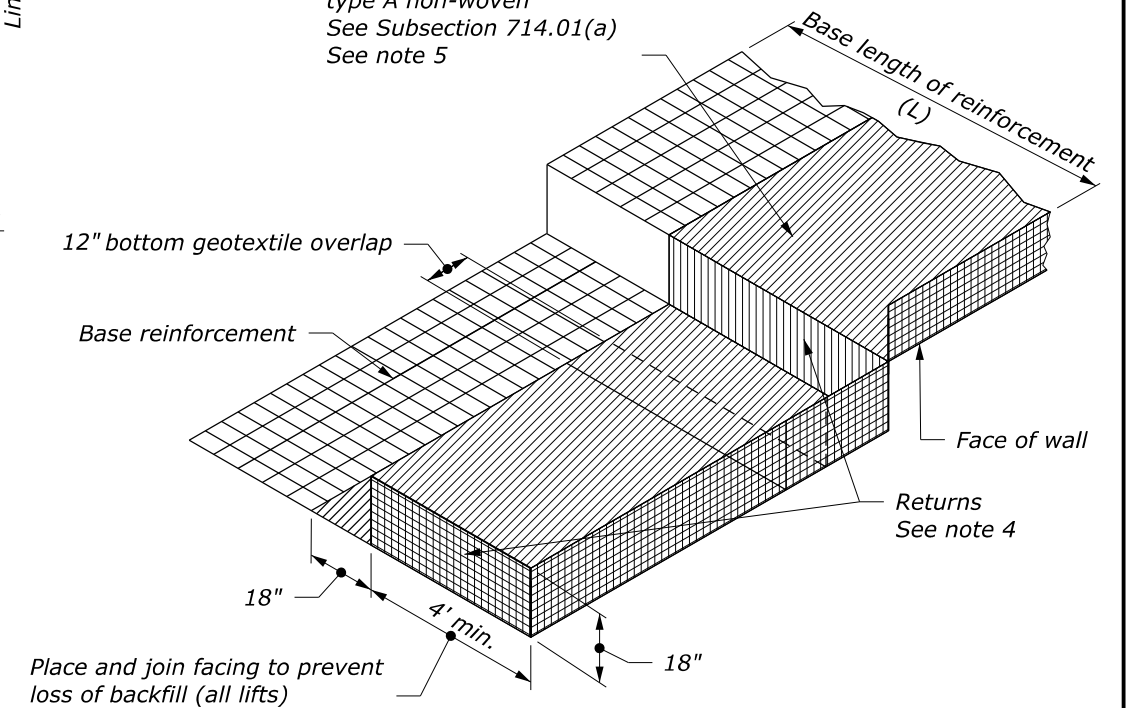


TYPICAL ELEVATION

NOTE:

1. Design welded wire face MSE walls according to Section 257 and AASHTO LRFD Bridge Design Specifications.
2. Top of wall will be as shown on wall layout drawings. No steps will be allowed.
3. Install guardrail posts according to Subsection 617.04.
4. Terminate wire-face at the beginning and end of each lift with a return of the wall facing material a minimum of 4 feet into the backfill. Returns will not be measured for payment.
5. Bottom geotextile to cover the base reinforcement and extend 18 inches up the wall face on all walls.
6. Sample and test materials or products according to Table 255-2.
7. Slope or shore excavation according to Section 208.

Bottom geotextile, Class 1-type A non-woven
See Subsection 714.01(a)
See note 5



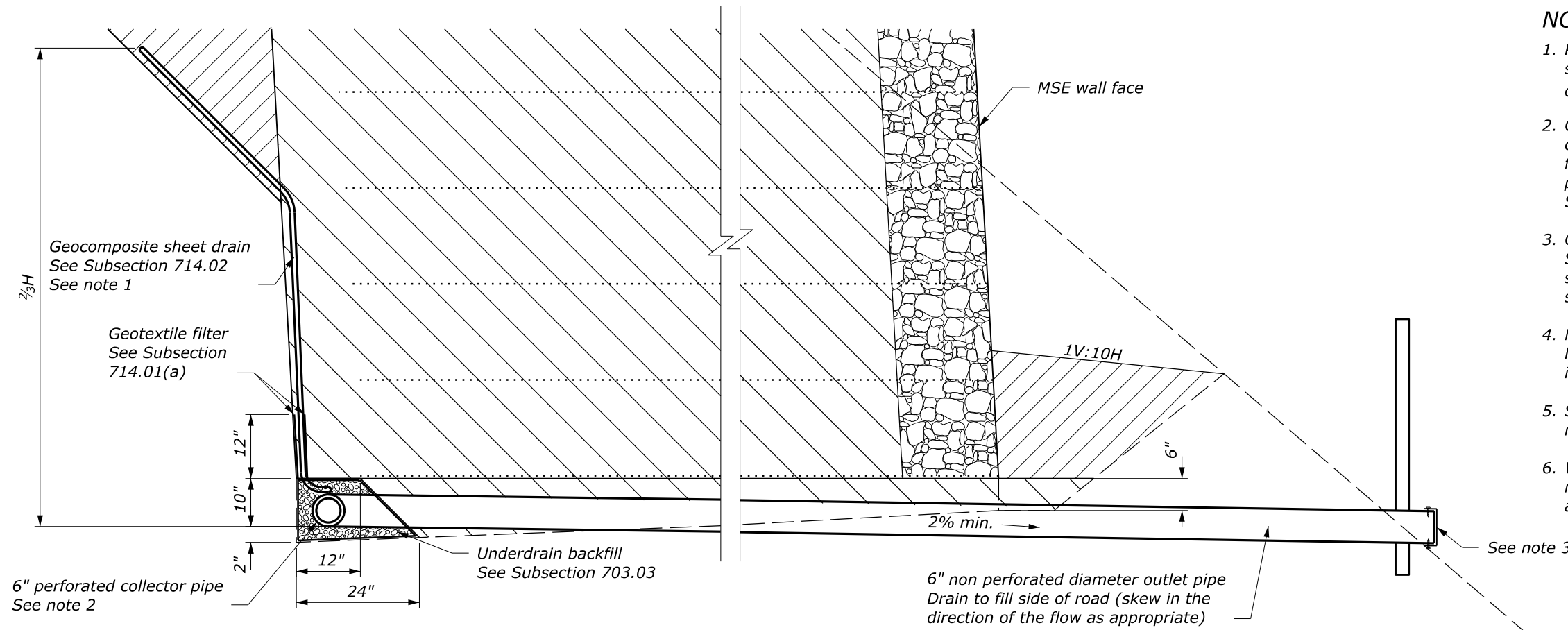
MSE WELDED WIRE FACED RETURN MAT

AASHTO MASH TEST LEVEL	D (feet)
2 (≤45 mph)	3.5
3 (>45 mph)	4.0

NO SCALE

U.S. DEPARTMENT OF TRANSPORTATION, FHWA OFFICE OF FEDERAL LANDS HIGHWAY		CFLHD DETAIL C257-50
CONTRACTOR DESIGNED MECHANICALLY STABILIZED EARTH (MSE) WALL		SPECIFICATION FP-14
Sheet 1 of 2		APPROVED FOR USE 06/2024

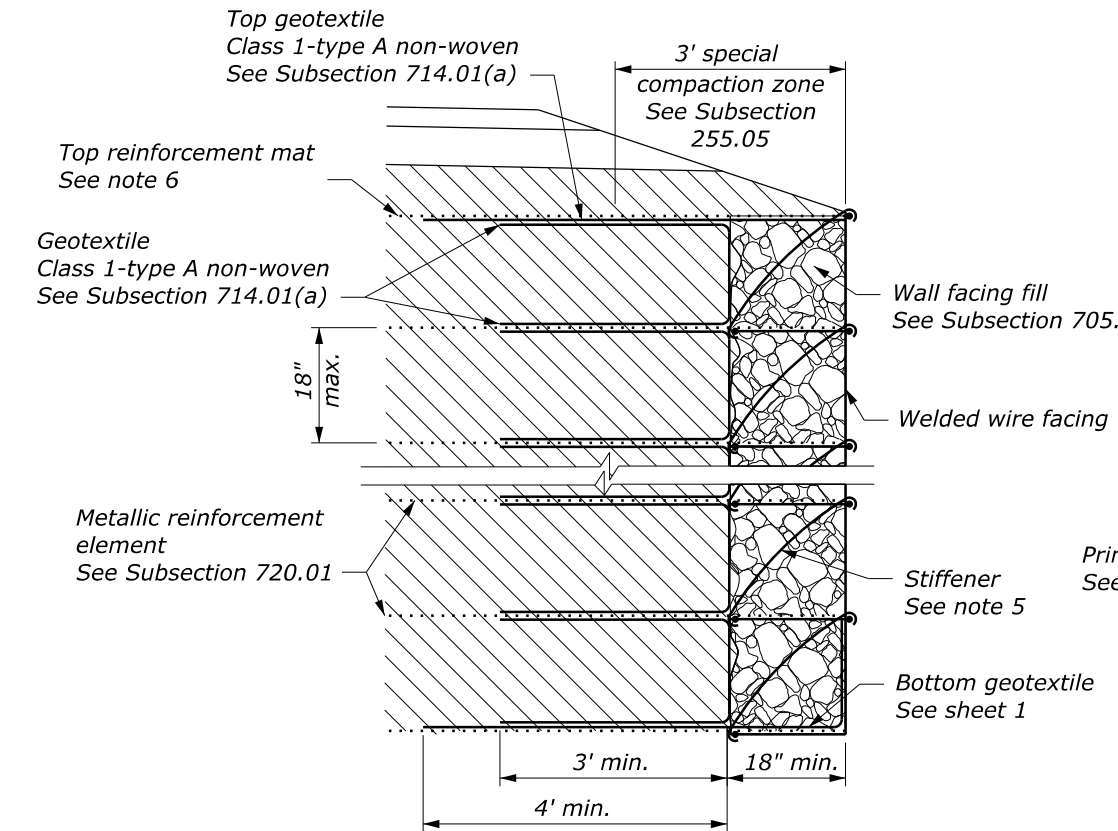
K:\CADD_Coordinator\ORD Drawings\Details\C257-50\pl4.dgn [Det. C257-50] 29 July 2024 8:07 AM



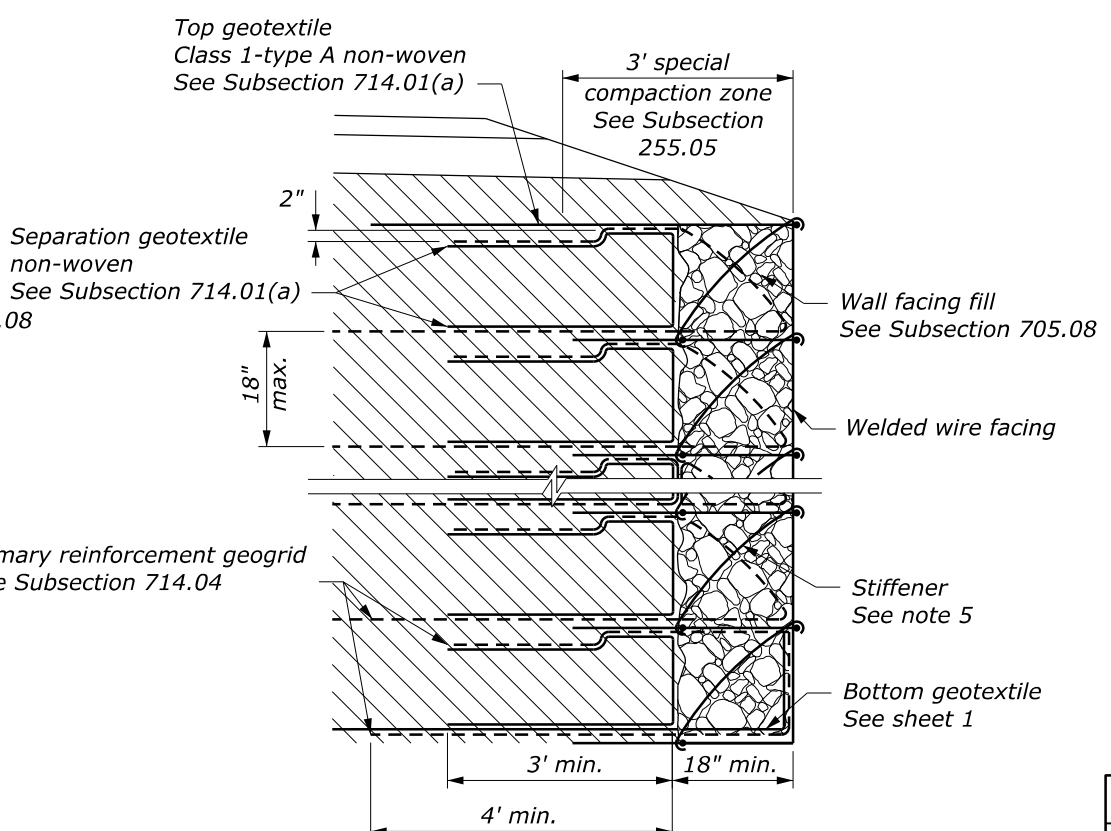
NOTE:

1. Place geocomposite sheet drains in 3-foot minimum wide strips with a spacing to achieve 30% ± 5% coverage area on excavation backslope to 2/3H.
2. Connect collector pipe to outlet pipes using a t-connector and outlet at low points of wall and at 50-foot maximum spacing. Furnish collector pipe, outlet pipe, and fittings meeting the requirements of Subsection 708.04.
3. Cover the end of the outlet pipe with screen according to Subsection 605.03. Hold the screen securely in place with standard coupling bands or approved means with securing screws.
4. Mark the exposed end of the outlet pipe with a 4-foot long post or other suitable marker. Place post within 12 inches of the end of the pipe.
5. Spacing and use of stiffener to be determined by the manufacturer.
6. Welded wire reinforcement systems require a top reinforcement mat unless the wall facing uses stiffeners to adequately reinforce the wall face.

MSE WALL DRAINAGE DETAIL



METALLIC REINFORCED MSE WALL DETAIL



GEOGRID REINFORCED MSE WALL DETAIL

U.S. DEPARTMENT OF TRANSPORTATION, FHWA OFFICE OF FEDERAL LANDS HIGHWAY	CFLHD DETAIL C257-50
CONTRACTOR DESIGNED MECHANICALLY STABILIZED EARTH (MSE) WALL	SPECIFICATION FP-24
	APPROVED FOR USE 06/2024